

# BRICKMDVI30CR, BRICKMDVI30TB, BRICKMDVI35CR, BRICKMDVI35TB

Models: MDVI30IN, MDVI35IN, MDVI30IL, MDVI35IL  
- Refractory Installation Instructions -



Leave this manual with party responsible for use and operation.

**CAUTION! Risk of Cuts or Abrasions.** Wear protective gloves and safety glasses during installation.

**NOTICE: Handle refractory panels with care. Refractory may chip or crack if dropped or impacted.**

## KIT COMPONENTS (Refractory shown in Figure 1)

- (1) Left Refractory
- (1) Right Refractory
- (1) Back Refractory

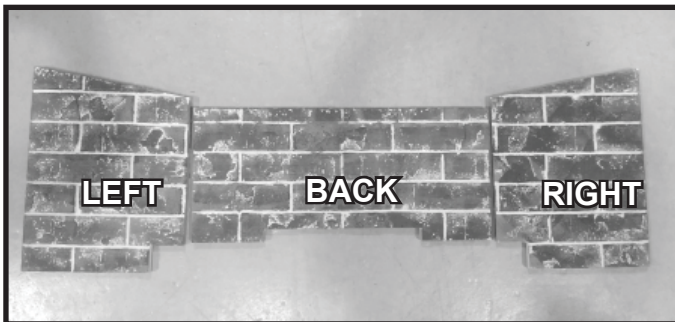


Figure 1. Refractory Kit Components

## INSTALLATION

1. Install back refractory as shown in Figure 2. The back refractory panel should rest against the back of the firebox. To avoid damage, hold the back refractory in place until a side refractory panel is installed.

It is possible that the back refractory panel will make contact with a pair of screws inside the firebox. In this case, gently push the refractory into the screws until it is flush with the back of the firebox. See Figure 3.

2. Install the right refractory panel as shown in Figure 4. Bend the refractory tab down to support and hold the refractory in place.



Figure 2. Install Back Refractory Panel

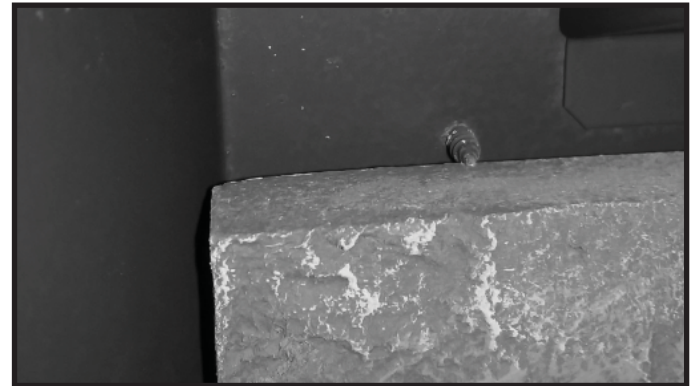


Figure 3. Back Refractory Panel Contacts Screw

3. Repeat procedure for installing the left refractory panel.
4. Adjust refractory panels as necessary to ensure grout lines are aligned between the back refractory and the side panels.

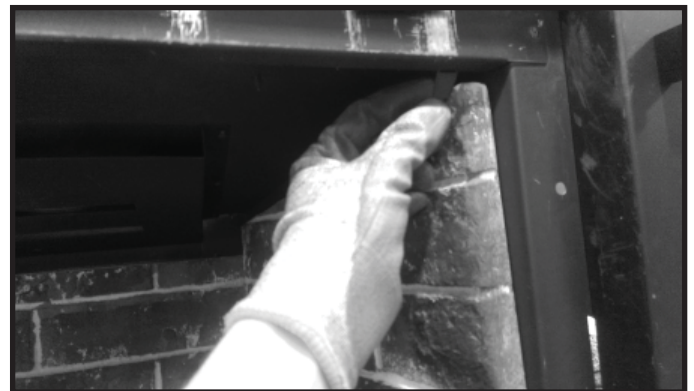


Figure 4. Install Side Refractory Panel



Figure 5. Refractory Panels Installed

Please contact your Majestic dealer with any questions or concerns.  
For the location of your nearest Majestic dealer, please visit [www.majestic.com](http://www.majestic.com).  
Majestic, a brand of Hearth & Home Technologies  
7571 215th Street West, Lakeville, MN 55044  
[www.majestic.com](http://www.majestic.com)