

REF-COR-KIT
Models: GDCR4136I, GDCL4136I, LCOR-36TRB-IPI, RCOR-36TRB-IPI
Installation Instructions

CAUTION! Risk of Cuts, Abrasions or Flying Debris.
 Wear protective gloves and safety glasses during installation. Sheet metal edges are sharp.



**HOT GLASS WILL
CAUSE BURNS.**

**DO NOT TOUCH GLASS
UNTIL COOLED.**

**NEVER ALLOW CHILDREN
TO TOUCH GLASS.**

A barrier designed to reduce the risk of burns from the hot viewing glass is provided with this appliance and shall be installed for the protection of children and other at-risk individuals.

CAUTION! Do not install damaged components.

Note: To avoid potential damage to hearth pad or flooring, protect area in front of fireplace by laying cardboard or blanket down.

NOTICE! The appliance installation manual and decorative front instructions should be available for reference when removing and replacing the decorative front, glass assembly and logs.

TOOLS REQUIRED

- Cordless screw gun with Phillips head
- 1/4 in. nut driver

KIT CONTENTS

1. 1-1/2 Inch Self-Tapping Screws (11)
2. 1/2 Inch Self-Tapping Screws (8)
3. Insulation Panel Top
4. Insulation Panel Bottom
5. Insulation Cover Panel Top
6. Insulation Cover Panel Bottom
7. Fiber Refractory - Side
8. Fiber Refractory - Back
9. Refractory Clip (6)

Verify and remove contents from packaging before beginning installation. See Figure 1.

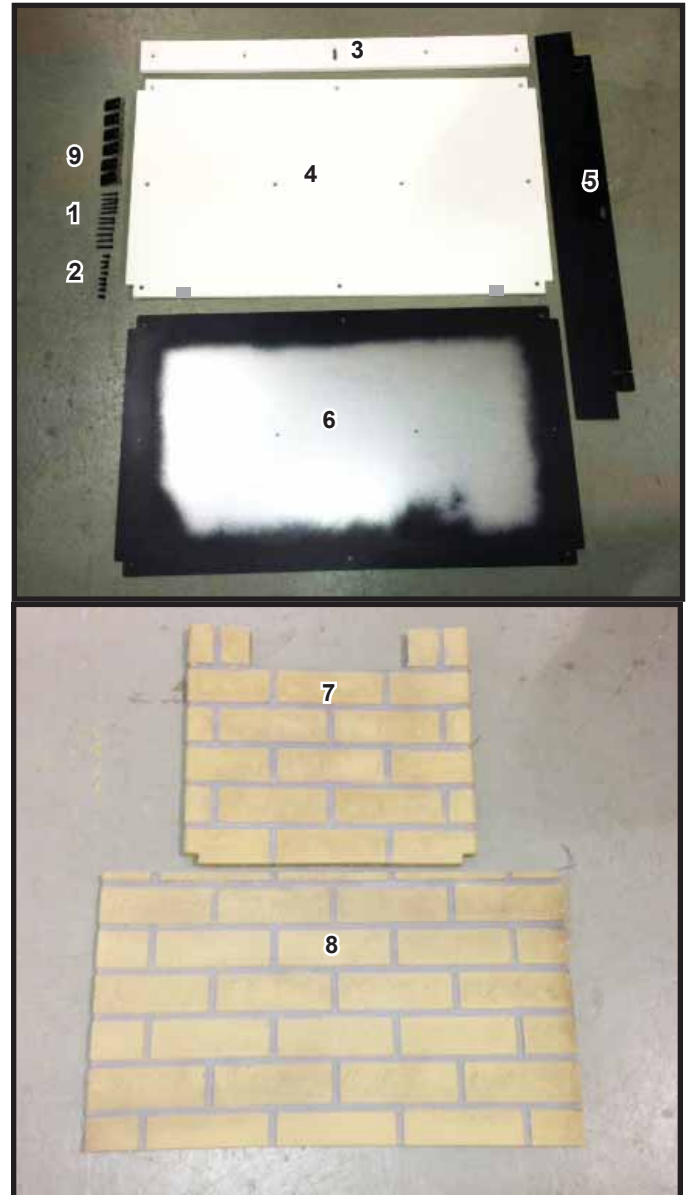


Figure 1. Kit Contents

NOTICE! Fiber refractory may be painted black if desired. Paint prior to installation of REF-COR-KIT. Order SRV999-404 (quantity 2) from your dealer.

INSTRUCTIONS

1. Remove decorative front and glass assembly.
2. Remove logs.
3. Remove the louver panel by removing three screws. See Figure 2.



Figure 2. Remove Louver Panel

4. Remove side panel by removing two screws. See Figure 3. Discard side panel.

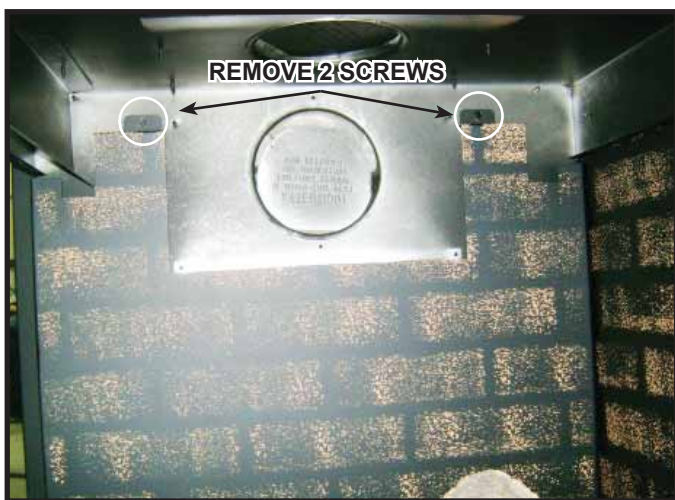


Figure 3. Remove Side Panel

5. Set the insulation panel top on the ledge. See Figure 4.



Figure 4. Insulation Panel Top in Position

6. Position the cover over the insulation panel ensuring that it is slid upward and meets the return bend of the firebox back. Line up the center pilot hole on the cover with the through hole on the insulation
7. Attach the insulation cover panel top using two 1/2 inch self-tapping screws and one 1-1/2 inch self-tapping screw. Location of screws is indicated in Figure 6.



Figure 5. Install Insulation Cover Panel Top

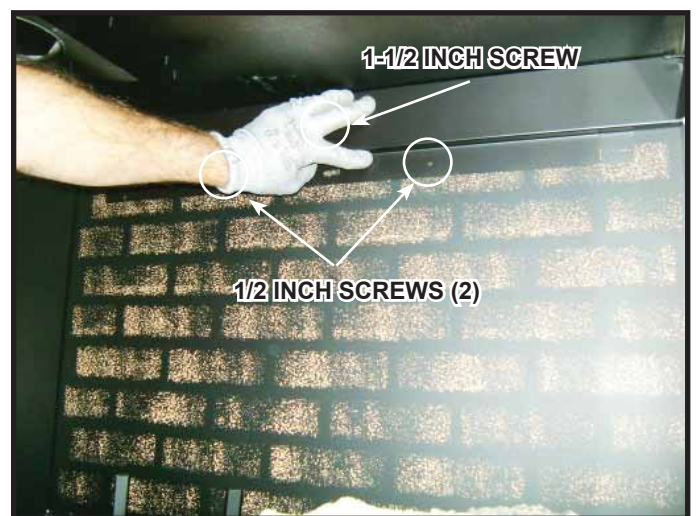


Figure 6. Install Insulation Cover Panel Top - Screw Locations

8. Install the insulation panel bottom by placing the bottom edge on the bottom ledge of the firebox back. Tilt the top edge into position. See Figure 7.
9. Install the two refractory clips through the cutouts indicated in Figure 7 and fasten them to the firebox back using the 1/2 inch self-tapping screws as shown in Figure 7 and Figure 8.

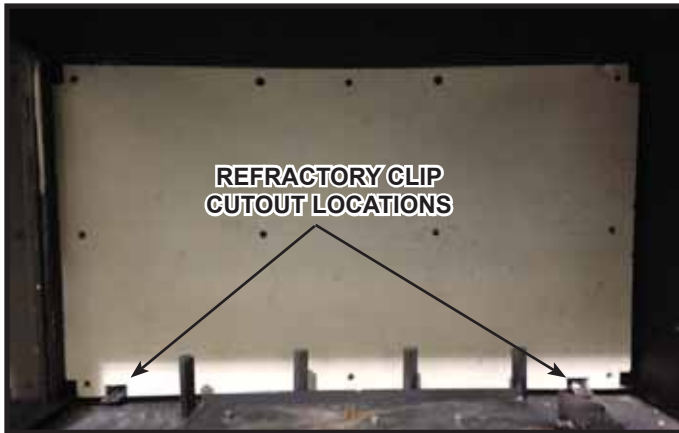


Figure 7. Insulation Panel Bottom Installed



Figure 8. Refractory Clip Location Detail

10. Install the insulation cover panel bottom by placing the bottom edge on the refractory clips installed in step 8. Tilt the top edge up and attach the insulation cover panel bottom using ten 1-1/2 inch self-tapping screws. See Figure 9.

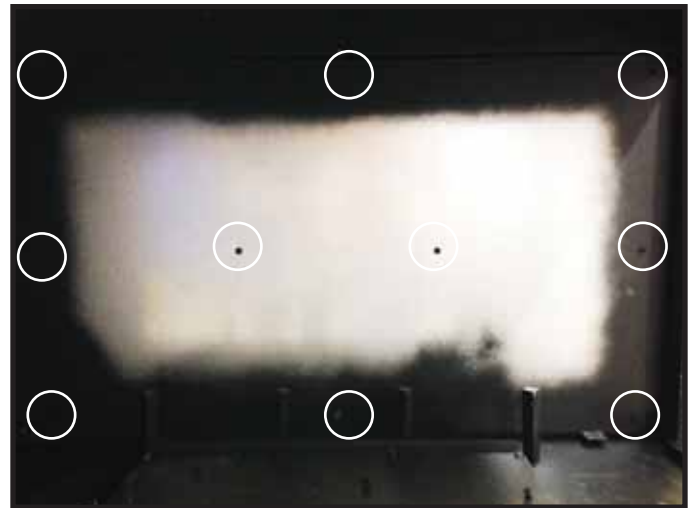


Figure 9. Insulation Cover Panel Screw Locations

11. Install the fiber refractory side as shown in Figure 10.



Figure 10. Install Side Refractory

12. Install the fiber refractory back by positioning it on the refractory clips installed in step 8. Attach four refractory clips using four 1/2 inch self-tapping screws to hold the back and side in position. The clips are installed in different orientations depending on their location. Note Details A, B and C in Figure 11.



Figure 11. Fiber Back Refractory Installation Detail

13. Reinstall the louver panel with the three screws as shown in Figure 2.
14. Reinstall logs according to the installation instructions.



Figure 12. REF-COR-KIT Installed

15. Reinstall glass assembly and decorative front.

Please contact your Hearth & Home Technologies dealer with any questions or concerns.
For the location of your nearest Hearth & Home Technologies dealer, please visit www.hearthnhome.com.

Hearth & Home Technologies
7571 215th Street West, Lakeville, MN 55044
www.hearthnhome.com