

This appliance has been retired.
Service parts pages within have been removed.
For replacement parts, please refer to the individual
service parts list located on the brand websites.



U.S. PATENT 4,793,322; 4, 875,464; AND 5,000,162
CANADIAN PATENT 1,297,749



Model 6000GDV
Model 6000GDVB
Installation and Operation
Instructions
A.G.A. L. Design Certified
CGA Certified
AGA Approved



THIS MANUAL MUST BE USED FOR INSTALLATION AND RETAINED BY THE HOMEOWNER FOR
OPERATION AND MAINTENANCE.

GAS TECHNOLOGIES, INC.
6665 W. Hwy 13 Savage, MN 55378 (612)890-8367



INSTALLATION AND OPERATION INSTRUCTIONS

PLEASE READ THIS MANUAL BEFORE INSTALLING AND USING THE FIREPLACE

MODEL 6000GDV IS A.G.A.L. AND AGA APPROVED FOR NATURAL GAS OR PROPANE.

MODEL 6000GDVB IS A.G.A.L. DESIGN CERTIFIED AND CGA CERTIFIED FOR NATURAL GAS OR PROPANE

Requires one or more of the following vent systems for installation:

DVK-01A, DVK-02A HORIZONTAL TERMINATION KITS

DVK-01SA, DVK-02SA

DVK-01TR, DVK-02TR

DVK-TVC, DVK-TVCD VERTICAL TERMINATION CAP

FOR YOUR SAFETY

What to do if you smell gas:

- Extinguish any open flame.
- Do not try to light any appliance.
- Do not touch any electrical switch; do not use any phone in your building.
- Immediately call your gas supplier from a neighbor's phone. Follow the gas supplier's instructions.
- If you cannot reach your gas supplier, call the fire department.

FOR YOUR SAFETY

Do not store or use gasoline or other flammable vapors and liquids in the vicinity of this or any other appliance.

WARNING: "IMPROPER INSTALLATION, ADJUSTMENT, ALTERATION, SERVICE OR MAINTENANCE CAN CAUSE INJURY OR PROPERTY DAMAGE. REFER TO THIS MANUAL. FOR ASSISTANCE OR ADDITIONAL INFORMATION CONSULT A QUALIFIED INSTALLER, SERVICE AGENCY OR THE GAS SUPPLIER."

IMPORTANT: Read all instructions carefully before starting installation. Failure to follow these installation instructions may result in a possible fire hazard and will void the warranty.

Save this Manual for future reference.

Copyright 1993, Gas Technologies, Inc. 6665 W. Hwy 13 Savage, MN 55378 Printed in U.S.A.

TABLE OF CONTENTS

1.0	Introduction	4
2.0	Installation Precautions	5
3.0	Installation Instructions	6
3.1	Vent System Approvals	8
3.1.1	Horizontal Terminating Vent Systems	13
3.1.2	Vertical Terminating Vent Systems	13
3.2	Vent System Installation Precautions	13
3.3	Installing Vent System Components	14
3.4	Cutting The Holes Through The Wall	16
3.5	Installing Wall Spacers	16
3.6	Permanently Anchoring The Fireplace	16
3.7	Connecting The Gas Line	17
3.8	Electrical Wiring For Optional Kits	17
3.8.1	Installing Electrical Service To The Junction Box	17
3.9	Wall Switch Wiring	19
3.10	Finishing	19
3.11	Hearth Extension	20
4.0	Electrical Safety System	20
5.0	Operating Guidelines/Maintenance Instructions	21
5.1	Glass Door Removal	22
5.2	Cleaning Burner And Pilot	22
5.3	Log Replacement	22
5.4	Glass Door Replacement	23
6.0	Safety Information	23
7.0	Lighting Instructions	24
	LPG (Propane) Information	25
8.0	High Altitude Installation	25
9.0	Trouble Shooting	26-30
10.0	Replacement Parts	31-34
11.0	Model 6000GDV-HSI Information	35-37
	Warranty Information	38

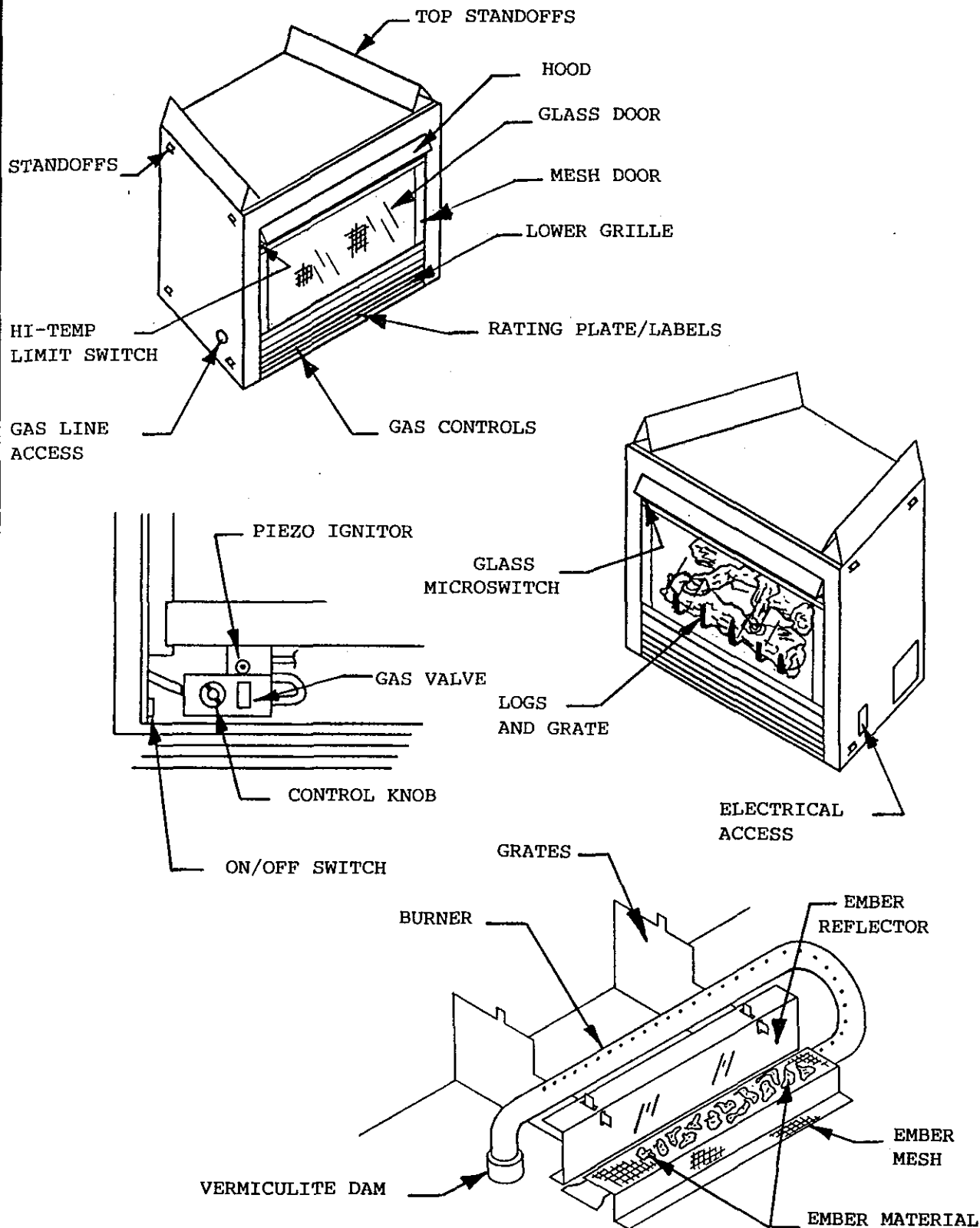


FIGURE 1

1.0 INTRODUCTION

The information in this manual pertains to both Models 6000GDV and 6000GDVB unless otherwise noted.

These models are Direct Vent Decorative Gas Appliances and are designed to operate with all combustion air being siphoned from the outside of the building and all exhaust gases expelled to the outside of the building.

WARNING: THIS UNIT IS NOT FOR USE WITH SOLID FUEL.

These models **MUST** use one of the vent terminations listed on page 1 and described in the venting section of this manual. **NO other vent terminations or components may be used unless described in these instructions.**

The control system for these models is a millivolt type. It consists of a gas control valve/regulator, a standing pilot assembly, a thermopile, a piezo ignitor, an ON/OFF rocker switch, a safety high temperature limit switch, and a safety microswitch for the sealed glass door. The controls are located in the lower compartment behind the lower grille. Access to this compartment is gained by rotating the grille down. See Figure 1.

WARNING: DO NOT CONNECT 110-120 VAC TO THE GAS CONTROL VALVE OR CONTROL WIRING SYSTEM OF THIS UNIT.

Installation must conform to local codes. In the absence of local codes installation must conform with the current National Fuel Gas Code ANSI Z223.1 (in the United States) or with the current installation code CAN/CGA - B149 (in Canada).

The appliance when installed must be electrically grounded in accordance with local codes; in absence of local codes, with the current National Electric Code ANSI/NFPA NO. 70 (in the United States) or with the current CSA C22.1 Canadian Electric Code (in Canada).

Installation of this appliance must conform to the requirements of the manufacturer's installation instructions, local gas fitting regulations, municipal building codes, electrical wiring regulations, the AGA installation code for gas burning appliances and equipment, and any other relevant statutory regulations (in Australia).

NOTE: INSTALLATION AND REPAIR SHOULD BE DONE BY A QUALIFIED SERVICE PERSON. THE APPLIANCE SHOULD BE INSPECTED BEFORE USE AND AT LEAST ANNUALLY BY A PROFESSIONAL SERVICE PERSON. MORE FREQUENT CLEANING MAY BE REQUIRED DUE TO EXCESSIVE LINT FROM CARPETING, BEDDING MATERIAL, ETC. IT IS IMPERATIVE THAT THE UNIT'S CONTROL COMPARTMENT, BURNERS, AND CIRCULATING AIR PASSAGEWAYS BE KEPT CLEAN TO PROVIDE FOR ADEQUATE COMBUSTION AND VENTILATION AIR.

Provide adequate clearances around air openings into the combustion chamber and allow accessibility clearance for servicing and proper operation. NEVER OBSTRUCT THE FRONT OPENINGS OF THE FIREPLACE OR THE DIRECT VENT CAP ON THE EXTERIOR OF THE HOUSE.

Minimum clearances in inches to combustibles are: Glass Front 36 (914mm), Floor 0, Back 1/2 (12.5mm), Top 3 1/2 (89mm) (top and back clearances are defined by the standoffs). Minimum distance from the ceiling to the top front of the unit is 31 (787mm) inches. The back of the unit may be recessed 21-1/2 (546mm) inches within combustible construction. Minimum clearance to a perpendicular wall extending past the front face of the unit is 1-inch (25mm).

Minimum inlet gas supply pressure for purpose of input adjustment is 4.5 inches water column natural gas and 11 inches water column propane. Maximum inlet gas supply pressure is 10.5 inches w.c. natural gas and 13.0 inches w.c. propane. For the purpose of input adjustment, inlet gas supply pressure should be 7.0 inches w.c. natural gas and 11.0 inches w.c. propane and manifold pressure should be set at 3.5 inches w.c. and 10.0 inches w.c. respectively.

A 1/8-inch N.P.T. plugged tapping is provided on the outlet side of the gas control for a test gauge connection to measure the manifold pressure. Provisions must be made to attach a test gauge to a 1/8-inch NPT plugged tapping immediately upstream of the gas supply connection to the appliance to measure inlet pressure.

The appliance and its individual shut off valve must be disconnected from the gas supply piping system during any pressure testing of the system at test pressures in excess of 1/2 psig (3.45 kPa).

This appliance must be isolated from the gas supply piping system by closing its individual manual shut-off valve during any pressure testing of the gas supply piping system at test pressures equal to or less than 1/2 psig (3.45 kPa).

2.0 INSTALLATION PRECAUTIONS

This direct vent gas fireplace and its components are tested and safe when installed in accordance with this Installation Manual. Report to your dealer any parts damaged in shipment, specifically check glass condition. The vent system and gas logs are in separate packages. Read all instructions before starting installation and follow these instructions carefully during installation to insure maximum benefit and safety. Failure to follow them will void your warranty and may present a fire hazard.

The Gas Technologies, Inc. warranty will be voided by, and Gas Technologies, Inc. disclaims any responsibility for, the following actions:

- Installation of any damaged fireplace or vent system component
- Modification of the fireplace or direct vent system
- Installation other than as instructed by Gas Technologies, Inc.
- Improper positioning of the gas logs or the glass door
- Installation and/or use of any component part not manufactured or approved by Gas Technologies, Inc., not withstanding any independent testing laboratory or other party approval of such component part or accessory.

ANY SUCH ACTION MAY POSSIBLY CAUSE A FIRE HAZARD.

Consult your local building codes.

NOTE: The appliance has an air-tight combustion chamber and takes 100% outside air for combustion. This appliance requires a direct vent system (see venting section of this manual for details). Both Natural Gas and Propane units may be installed in a bedroom.

THIS FIREPLACE AND VENT ASSEMBLY MUST BE VENTED THROUGH AN OUTSIDE WALL AND MUST NEVER BE ATTACHED TO A CHIMNEY SERVING A SOLID FUEL BURNING APPLIANCE.

NOTE: When installing the vent system, it is imperative that the vent cap (horizontal termination) be **NO** more than a 1/4" (6.4mm) below horizontal.

Two separate bags of ember materials are shipped with this unit. The bag labeled Golden Ember (GE-93) is flame colorant material. The bag labeled Glowing Ember (050-721) is standard glowing ember material.

INITIAL SET-UP: Alternately place a single layer of dime size and shape pieces of Golden Ember (GE-93) and Glowing Ember (050-721) onto the top of the lower burner ember screen. See Figure 1.

Save the remaining ember materials for use during fireplace servicing.

FIREPLACE SERVICING: Frequency of fireplace servicing will depend upon use and type of installation.

Carefully brush away or vacuum up any loose materials on the lower burner ember screen. Alternately place dime size and shape pieces of Golden Ember (GE-93) flame colorant replacement material and Glowing Ember (050-721) standard ember material onto any open areas on top of the ember screen.

Save remaining ember materials and repeat this procedure at the next fireplace servicing.

NOTE: It may be necessary to clean the glass door after replenishing the flame colorant material. Film deposits on the inside of the glass door should be cleaned off using a household glass cleaner. **DO NOT** handle or attempt to clean the glass when it is **HOT**.

To install the logs, remove the front mesh trim and glass door assemblies. Place the bottom front and rear logs on the grates using the holes in the bottom of the logs and the tabs on the grates. (See Figure 2). Position the middle right and left logs in the cut-out areas on top of the bottom logs. Place the top right and left twigs in the flat cut-out areas on top of the middle logs.

WARNING: THE GAS LOGS MUST BE PROPERLY POSITIONED, WITH NO FLAME IMPINGEMENT ON THEM, OR THE FIREPLACE WILL NOT FUNCTION PROPERLY AND MAY RESULT IN SOOT ACCUMULATION ON THE INSIDE OF THE FIREBOX. IF THE BURNER FLAME IMPINGES ON THE LOGS, REPOSITION THEM SO THAT NO IMPINGEMENT OCCURS.

Replace the glass door and mesh trim assemblies. **THE UNIT WILL NOT OPERATE UNLESS THE GLASS DOOR IS SECURED IN PLACE AND SEALED.**

WARNING: DO NOT OPERATE THIS APPLIANCE WITH THE GLASS DOOR REMOVED, CRACKED, OR BROKEN. REPLACEMENT OF THE GLASS DOOR SHOULD BE DONE BY A LICENSED OR QUALIFIED PERSON. DO NOT STRIKE OR SLAM THE GLASS DOOR.

WARNING: THE GLASS DOOR ASSEMBLY SHALL ONLY BE REPLACED AS A COMPLETE UNIT AS SUPPLIED BY THE GAS FIREPLACE MANUFACTURER. NO SUBSTITUTE MATERIALS MAY BE USED.

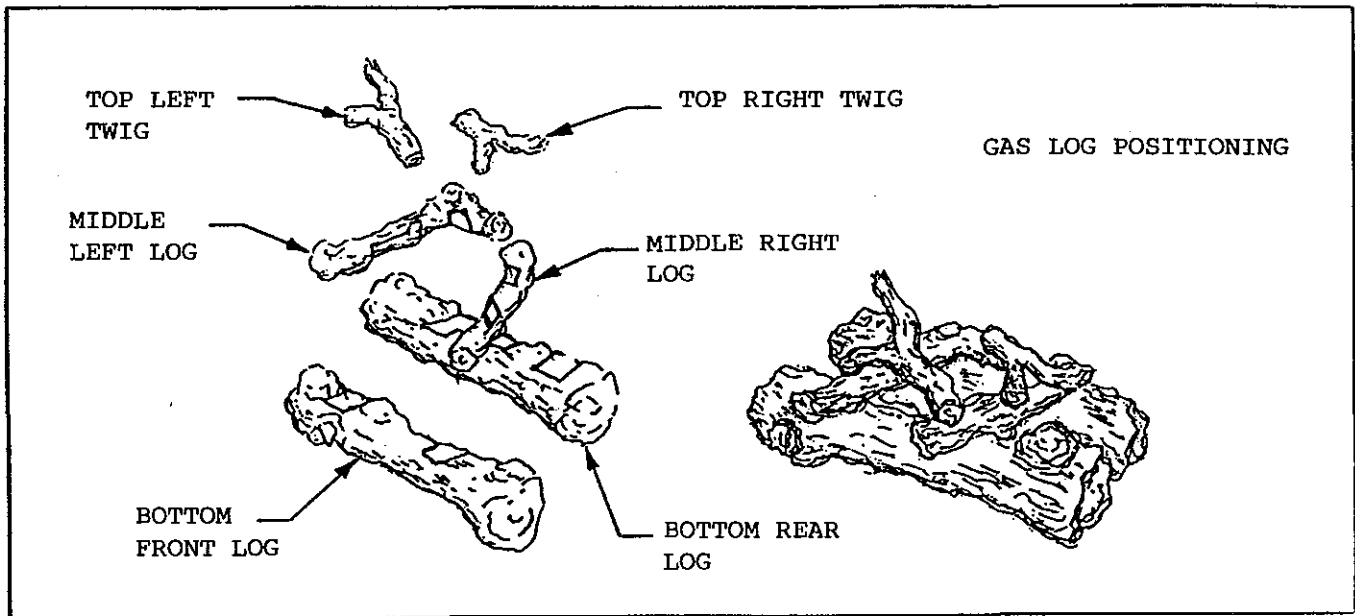


FIGURE 2

WARNING: THE GLASS DOOR ASSEMBLY MUST BE IN PLACE AND SEALED AND THE FIXED MESH TRIM ASSEMBLY MUST BE IN PLACE ON THE FIREPLACE BEFORE THE UNIT CAN BE PLACED INTO SAFE OPERATION.

Do not spray aerosols in the vicinity of this appliance while it is in operation.

Prior to first firing, read Operation Instructions section of this manual.

Do not use this appliance if any part has been under water. Immediately call a qualified service technician to inspect the unit and to replace any part of the control system and any gas control which has been underwater.

DUE TO HIGH TEMPERATURE, THE APPLIANCE SHOULD BE LOCATED OUT OF TRAFFIC AREAS AND AWAY FROM FURNITURE AND DRAPERIES. CLOTHING OR FLAMMABLE MATERIAL SHOULD NOT BE PLACED ON OR NEAR THE APPLIANCE.

NOTE: IF EXTERIOR WALLS ARE FINISHED WITH VINYL SIDING, IT IS NECESSARY TO INSTALL THE VINYL PROTECTOR KIT (VPK-DV) TO THE TOP OF THE EXTERIOR FIRESTOP.

3.0 INSTALLATION INSTRUCTIONS

In planning the installation for the fireplace it is necessary to determine where the unit is to be installed, the type of vent system to be used (straight out, corner, or elevated), and whether optional accessories (fan, wall switch or remote control) are desired. Gas supply piping should also be planned.

The fireplace can be mounted on any of the following surface:

1. A flat combustible surface other than carpeting.
2. A raised wooden platform.
3. Four (4) corner supports.

(Example: Four (4) concrete masonry blocks). These supports must be positioned so they contact all four (4) perimeter edges on the bottom of the unit.

If the fireplace is installed directly on carpeting, tile, or other combustible material other than wood flooring, the appliance shall be installed on a metal or wood panel extending the full width and depth of the unit.

Fireplace framing can be built before or after the fireplace is set in place. Framing should be positioned to accommodate wall covering and fireplace facing material. The fireplace framing should be constructed of 2" X 4" (51 x 102mm) lumber or heavier. The framing headers may rest on the fireplace standoffs. Refer to Figure 3 and Figure 4 for fireplace and framing reference dimensions. **CAUTION:** Measure fireplace dimensions, and verify framing methods and wall covering details before framing construction begins.

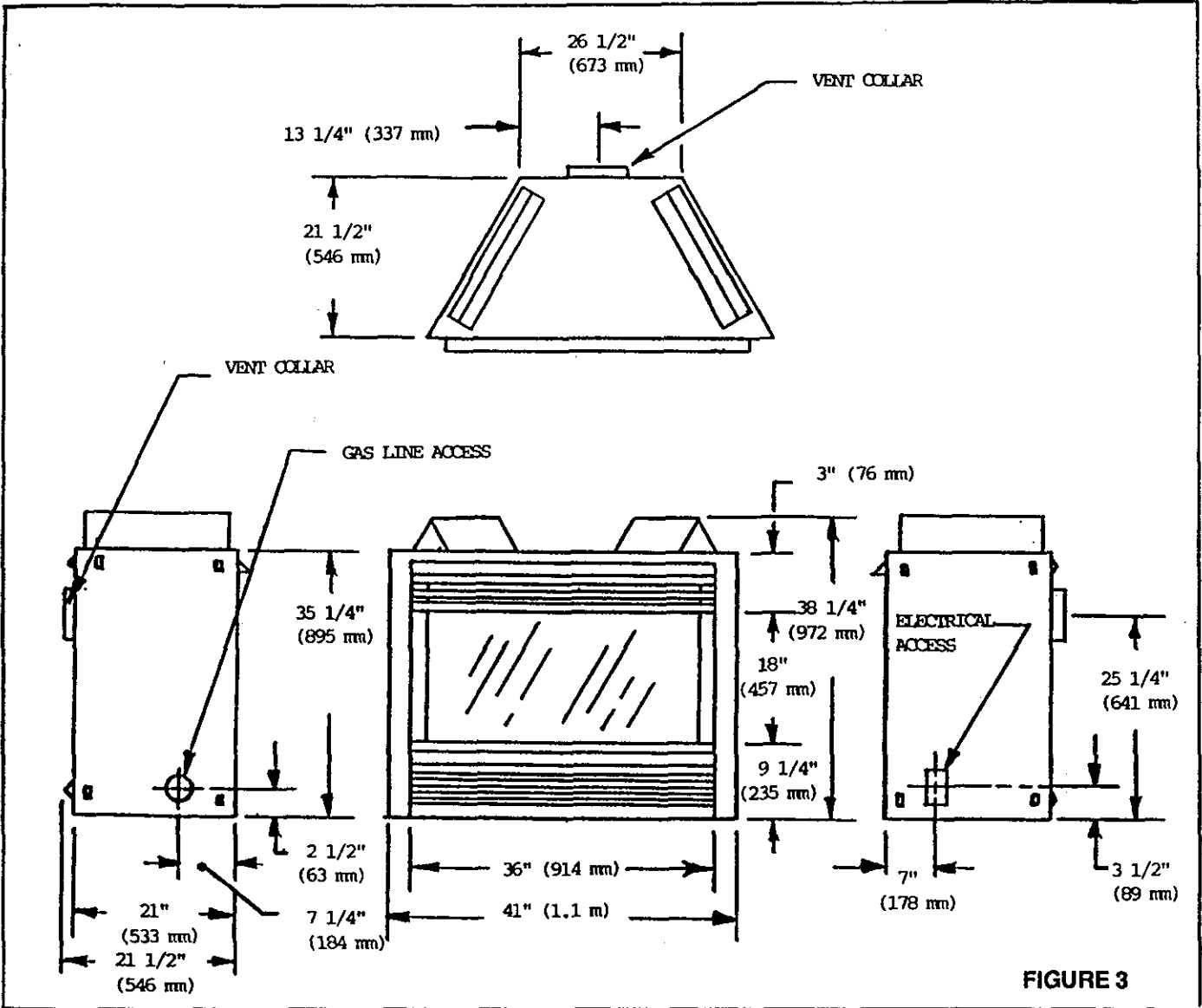


FIGURE 3

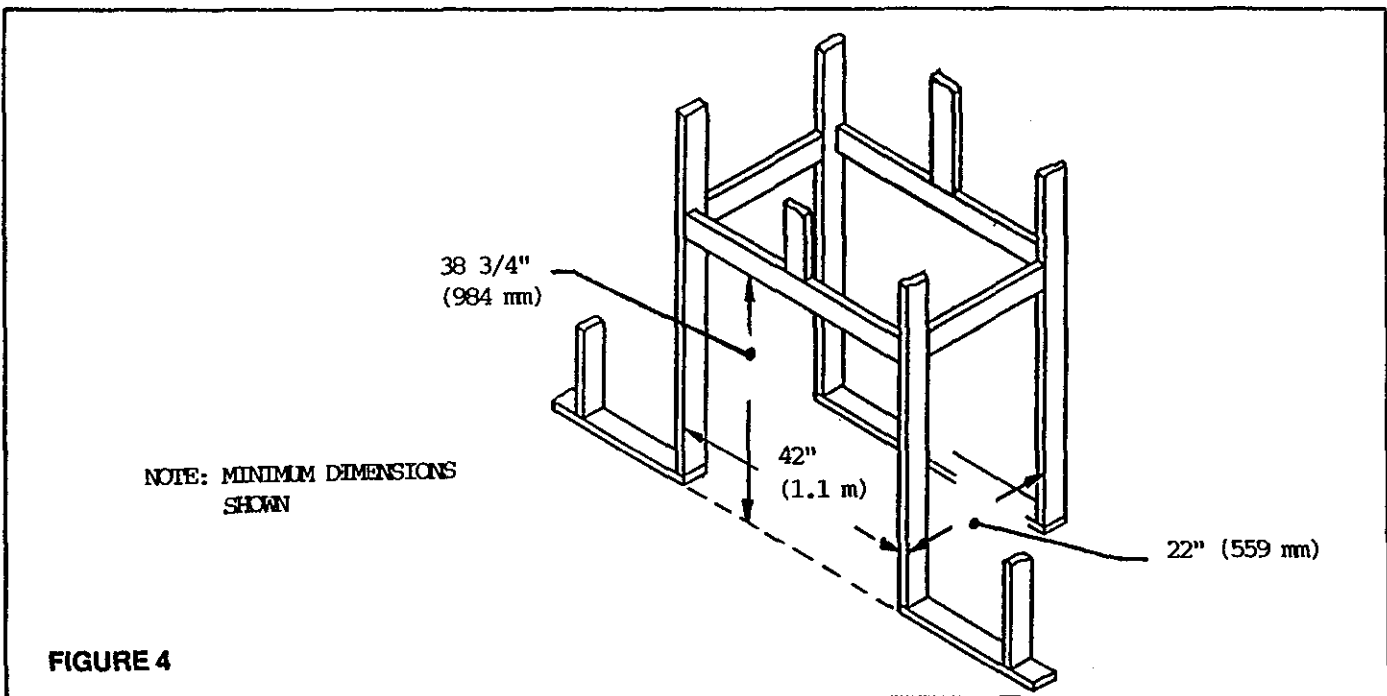


FIGURE 4

MODEL	VENT TERMINATION APPROVALS				
6000GDV & 6000GDVB	DVK-01A DVK-01TR	DVK-02A DVK-02TR	DVK-01SA	DVK-02SA	DVK-TVC DVK-TVCD

TABLE 1

3.1 VENT SYSTEM APPROVALS

Tables 1 through 6 and Figures 5 through 8 show the vent systems approved for use with these models. Approved vent system components are labeled for identification. **NO OTHER VENTING SYSTEMS OR COMPONENTS MAY BE USED.** Detailed installation instructions are included with each vent termination kit and should be used in conjunction with this manual.

HORIZONTAL VENTING

Table 2 and Figure 5 show the horizontal vent termination kits approved for use on this model.

ELBOWS

The vent systems installed on this gas fireplace may also include one (1), two (2), or three (3) 90-degree elbow assemblies. The following relationships of vertical rise to horizontal run in vent configurations using 90-degree elbows **MUST** be strictly adhered to.

NOTE: 45-DEGREE ELBOWS (DVK-45) MAY BE USED IN PLACE OF 90 -DEGREE ELBOWS.

CAUTION: DO NOT INSTALL A 45-DEGREE ELBOW DIRECTLY TO THE FIREPLACE FOR A CORNER INSTALLATION. USE TWO 90-DEGREE ELBOWS. SEE FIGURE 5.

ONE (1) 90-DEGREE ELBOW

Figure 6 and Table 3 show examples of possible installations using one (1) 90-degree elbow. Dimension V is listed as **MINIMUM** vertical dimensions and dimension H is listed as corresponding **MAXIMUM** horizontal dimensions. Vertical dimensions are based on centerline of pipe to end of termination. Horizontal dimensions are based on back of unit to centerline of pipe. A vent system using one 90-degree elbow will result in a vertical termination.

If straight sections of vent pipe are first attached to the unit, there must be at least a 1-foot (305mm) vertical rise for each 2-feet (610mm) of horizontal run. The maximum vertical rise is 40-feet (12.4m), and the maximum horizontal run is 8-feet (2.4m).

TWO (2) 90-DEGREE ELBOWS

Figure 7 and Table 4 show examples of possible installations using two (2) 90-degree elbows. Dimension V is listed as **MINIMUM** vertical dimensions, dimension H is listed as **MAXIMUM** beginning horizontal dimensions, and dimension H+H₁ is listed as corresponding **TOTAL MAXIMUM** horizontal dimensions. Vertical dimensions are based on centerline to centerline of pipe. Horizontal dimensions H are based on back of unit to centerline of pipe. Horizontal dimensions H₁ are based on centerline of pipe to end of termination.

Elevated vent systems using two (2) 90-degree elbows, **MUST** have at least a 1-foot (305mm) vertical rise for each 6-feet (1.86m) of horizontal run. The **MAXIMUM** vertical rise is 20-feet (6.2m) and the **MAXIMUM** beginning horizontal run H is 8-feet (2.48m). The **MAXIMUM TOTAL** horizontal run H+H₁ is 24 (7.44m) feet (20-feet in Canada). A vent system using two 90-degree elbows will result in a horizontal termination.

THREE (3) 90-DEGREE ELBOWS

Figure 8 and Table 5 show examples of possible installations using three (3) 90-degree elbows and a horizontal termination. Figure 8 and Table 6 show examples of possible installations using three (3) 90-degree elbows and a vertical termination. Dimensions V are listed **MINIMUM** first vertical dimensions and dimensions H are listed as beginning **MAXIMUM** horizontal dimensions. Dimensions H+H₁ (vertical termination) and H+H₁+H₂ (horizontal termination) are listed as **TOTAL MAXIMUM** horizontal dimensions. A vent system using three (3) 90-degree elbows can terminate either horizontally or vertically.

Elevated vent systems using three (3) 90-degree elbows **MUST** maintain the following relationships.

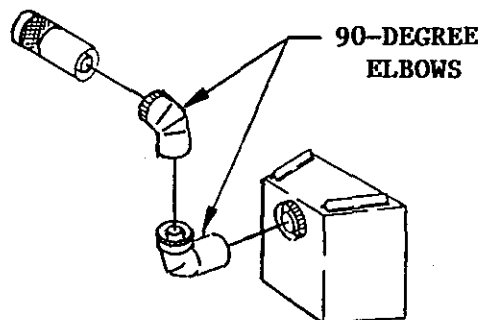
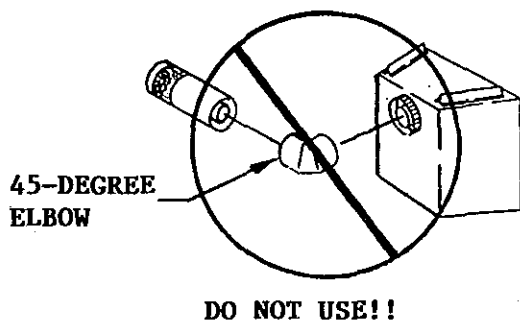
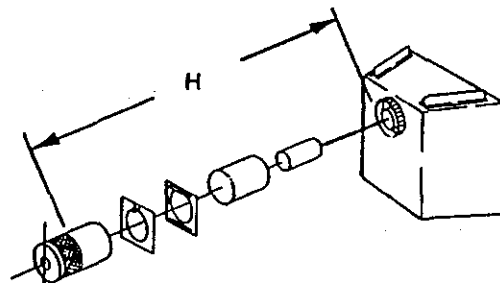
1. There **MUST** be at least a 1-foot (305mm) vertical rise V for each 2-feet (610mm) of beginning horizontal run H .
2. There **MUST** be at least a 1-foot (305mm) total vertical rise V or $V+V_1$ for each 5-feet (1.52m) of total horizontal run $H+H_1$ or $H+H_1+H_2$.

3. The **MAXIMUM** vertical rise V is 20-feet (6.2m), the **MAXIMUM** beginning horizontal run H is 8-feet (2.48m), and the **MAXIMUM TOTAL** horizontal run $H+H_1+H_2$ is 20-feet (6.2m) for systems terminating horizontally (See Table 5).

4. The **MAXIMUM** beginning horizontal run H is 8-feet (2.48m) and the **TOTAL MAXIMUM** horizontal run $H+H_1$ is 20-feet (6.2m) for systems terminating vertically. The **TOTAL MAXIMUM** vertical rise $V+V_1$ is 40-feet (12.4m). (See Table 6)

HORIZONTAL VENTING		
KIT NO.	H MIN. RUN	H MAX. RUN
DVK-01A DVK-01SA DVK-01TR	8" (203mm)	13" (330mm)
DVK-02A DVK-02SA DVK-02TR	13.1" (331mm)	24" (610mm)

TABLE 2



CORNER INSTALLATION

FIGURE 5

VENTING WITH ONE (1) 90 ELBOW

V (FT.)	H (FT.)
1' MIN (305mm)	2' MAX (610mm)
2' MIN (610mm)	4' MAX (1.22m)
3' MIN (914mm)	6' MAX (1.86m)
4' MIN (1.22m)	8' MAX (2.48m)
5' MIN (1.52m)	8' MAX (2.48m)
40' MAX (12.4m)	8' MAX (2.48m)

TABLE 3

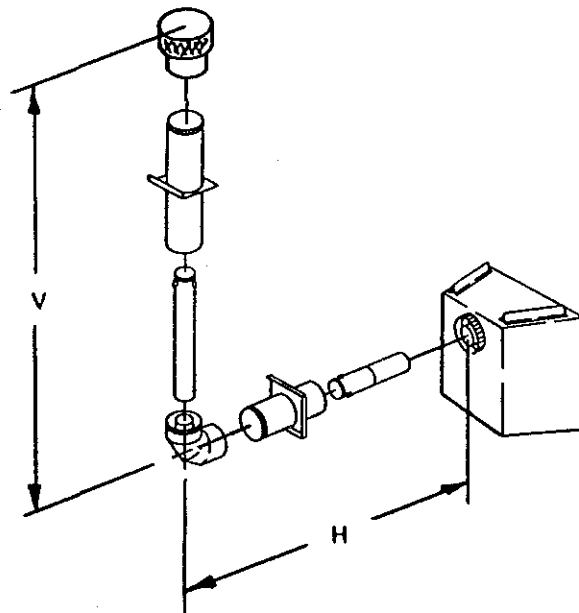


FIGURE 6

VENTING WITH TWO (2) 90 ELBOWS		
V (FT.)	H (FT.)	H+ H ₁ (FT.)
1' MIN.(305mm)	2' MAX.(610mm)	6' MAX.(1.86m)
2' MIN.(610mm)	6' MAX.(1.86m)	12' MAX.(3.72m)
3' MIN.(914mm)	6' MAX.(1.86m)	18' MAX.(5.58m)
4' MIN.(1.22m)	8' MAX.(2.48m)	24' MAX.(7.74m)
5' MIN.(1.52m)	8' MAX.(2.48m)	24' MAX.(7.74m)
20' MAX.(6.2m)	8' MAX.(2.48m)	24' MAX.(7.74m). (20'(6.2m) CANADA)

TABLE 4

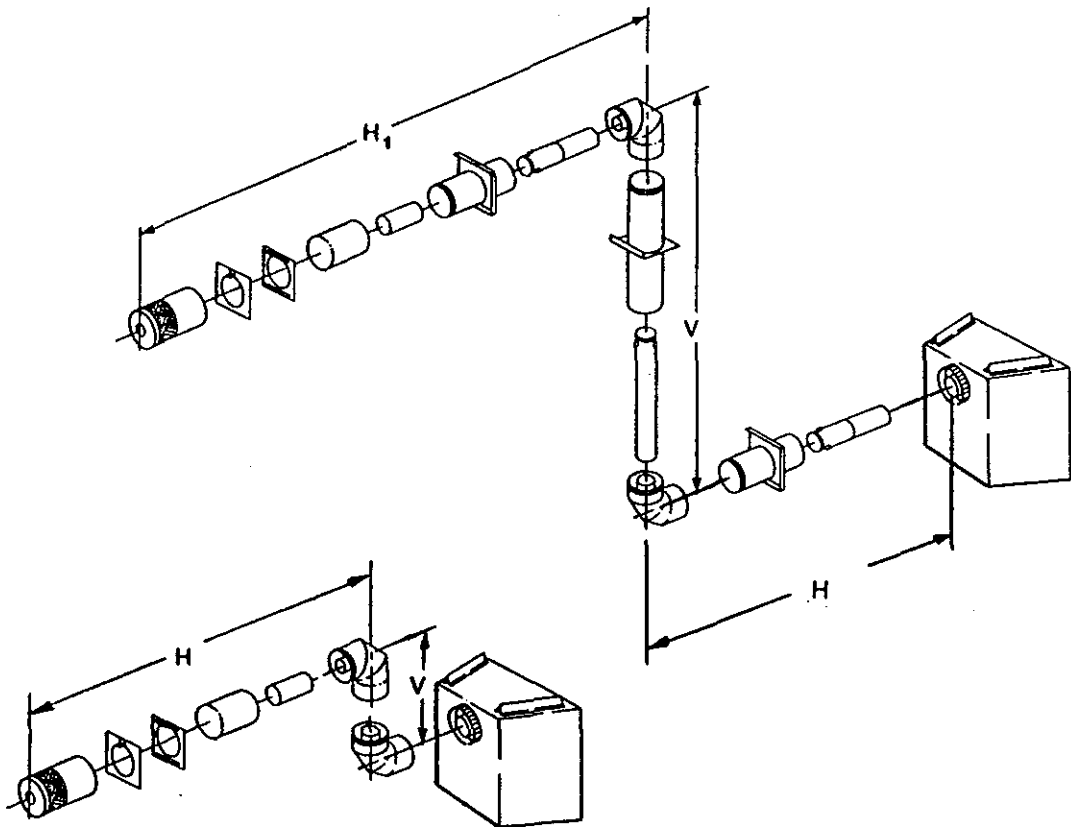
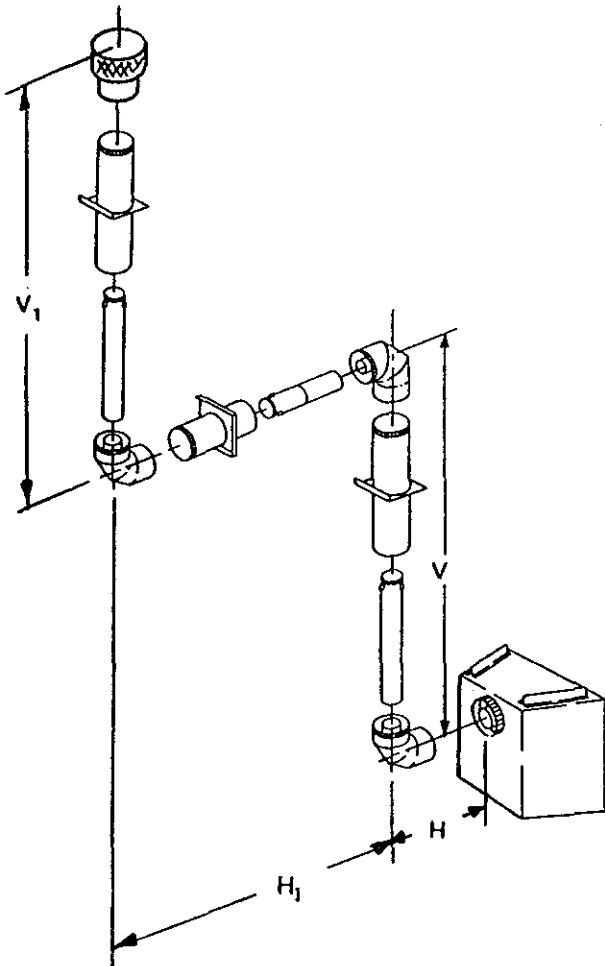
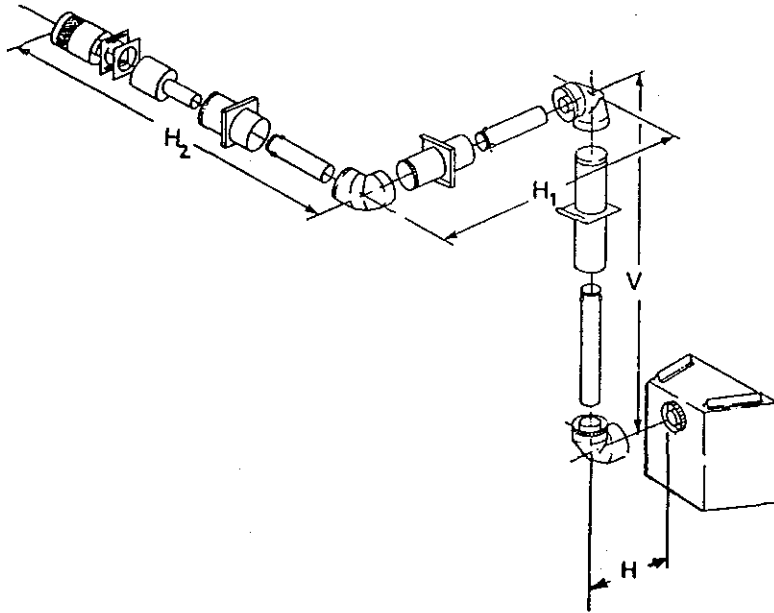


FIGURE 7

VENTING WITH THREE (3) 90° ELBOWS

V(FT.)	H(FT.)	H+H ₁ +H ₂ (FT.)
1' MIN. (305mm)	2' MAX. (610mm)	5' MAX. (1.52m)
2' MIN. (610mm)	4' MAX. (1.22m)	10' MAX. (3.1m)
3' MIN. (914mm)	6' MAX. (1.86m)	15' MAX. (4.65m)
4' MIN. (1.22m)	8' MAX. (2.48m)	20' MAX. (6.2m)
5' MIN. (1.52m)	8' MAX. (2.48m)	20' MAX. (6.2m)
20' MAX. (6.2m)	8' MAX. (2.48m)	20' MAX. (6.2m)

TABLE 5



VENTING WITH THREE (3) 90° ELBOWS

V (FT.)	H (FT.)	H+ H ₁ (FT.)
1' MIN.(305mm)	2' MAX.(610mm)	5' MAX.(1.52m)
2' MIN.(610mm)	4' MAX.(1.22m)	10' MAX.(3.1m)
3' MIN.(914mm)	6' MAX.(1.86m)	15' MAX.(4.65m)
4' MIN.(1.22m)	8' MAX.(2.48m)	20' MAX.(6.2m)
5' MIN.(6.2m)	8' MAX.(2.48m)	20' MAX.(6.2m)
	8' MAX.(2.48m)	20' MAX.(6.2m)

NOTE: V+ V₁ MAX. 40'(12.4m)

TABLE 6

3.1.1 HORIZONTAL TERMINATING VENT SYSTEMS

DVK-01A, DVK-02A, DVK-01TR, DVK-02TR, DVK-01SA and DVK-02SA are telescoping vent kits which are used to terminate a vent system in a horizontal position. DVK-01A and DVK-02A have pre-assembled round termination caps - DVK-01SA and DVK-02SA have pre-assembled square termination caps - DVK-01TR and DVK-02TR have pre-assembled trapezoid shape caps.

NOTE: A Model DRC-DV shield **MUST** be installed with DVK-01A or DVK-02A termination kits in Canada.

3.1.2 VERTICAL TERMINATING VENT SYSTEMS

DVK-TVC or DVK-TVCD are vertical termination caps which must be used to terminate vent systems in a vertical position.

WARNING: Major U.S. building codes specify minimum chimney and/or vent height above the roof top. These minimum heights are necessary in the interest of safety. These specifications are summarized in the Ten Foot Rule (See Fig. 9). The key points of this rule are:

1. If the horizontal distance from the edge of the vent or chimney to the peak of the roof is 10 feet (3.1m) or less, the top of the vent or chimney must be at least 2 feet (610mm) above the peak of the roof, but never less than 3 feet (914mm) in height above the highest point where it passes through the roof.
2. If a horizontal distance from the edge of the vent or chimney to the peak of the roof is more than 10 feet (3.1m), a vent or chimney height reference point is established that is on the surface of the roof a distance of 10 feet (3.1m) from the edge of the vent or chimney in a horizontal plane. (See Fig. 9) The top of the vent or chimney must be at least 2 feet (610mm) above this reference point, but never less than 3 feet (914mm) in height above the highest point where it passes through the roof.

NOTE: THIS ALSO PERTAINS TO VERTICAL VENT SYSTEMS INSTALLED ON THE OUTSIDE OF THE BUILDING.

3.2 VENT SYSTEM INSTALLATION PRECAUTIONS

Before starting installation of vent kits, the installer should read the Gas Fireplace Instructions and the Vent Kit Instructions to insure that the proper vent system has been selected for the installation.

Determine the exact position of the fireplace so the direct vent pipe is centered (if possible) between two building framing members. This will avoid any extra framing. Using a level, make sure the fireplace is properly positioned and squared. The 1/2 inch (12.5mm) standoffs on the sides and back of the fireplace may be positioned directly against combustible walls.

Consult your local Building Codes before beginning the installation.

WARNING: THIS GAS FIREPLACE AND VENT ASSEMBLY **MUST BE VENTED DIRECTLY TO THE OUTSIDE AND MUST NEVER BE ATTACHED TO A CHIMNEY SERVING A SEPARATE SOLID FUEL BURNING APPLIANCE. EACH GAS APPLIANCE MUST USE A SEPARATE VENT SYSTEM-COMMON VENT SYSTEMS ARE PROHIBITED.**

CAUTION: UNDER NO CONDITION SHOULD COMBUSTIBLE MATERIAL BE CLOSER THAN 3 INCHES (76mm) FROM THE TOP OF THE 8-INCH (203mm) PIPE OR 1-INCH (25mm) TO THE SIDES AND THE BOTTOM FOR HORIZONTAL SECTIONS OF THIS VENT SYSTEM. VERTICAL SECTIONS OF THIS SYSTEM REQUIRE A MINIMUM OF 1-INCH (25mm) CLEARANCE TO COMBUSTIBLE MATERIALS ALL AROUND THE 8-INCH (203mm) PIPE.

Connections between each vent system component must be properly and tightly joined, and system components must be secured with sheetmetal screws at each joint. THE PIPE SEAMS SHOULD BE DOWN ON HORIZONTAL SECTIONS OF THIS SYSTEM.

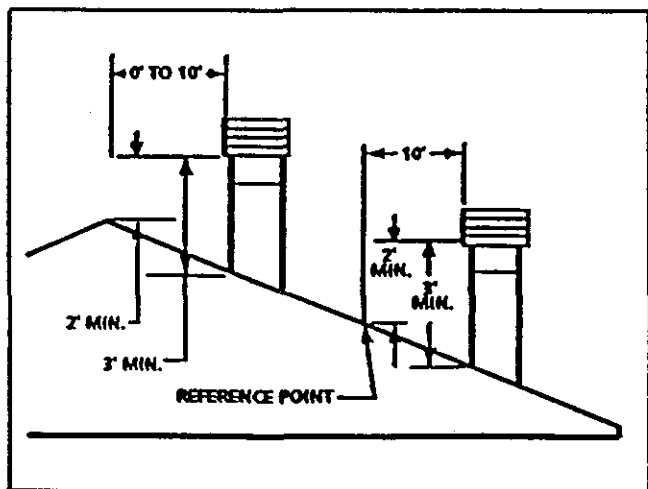


FIGURE 9

3.3 INSTALLING VENT SYSTEM COMPONENTS

Attach the first vent component to the starting collars of the fireplace. If the first vent component is a 90-degree elbow assembly (DV-90), secure the 8-inch (203mm) collar-elbow connection with three (3) sheetmetal screws. If the first vent component is concentric 5-inch (127mm) and 8-inch (203mm) straight pipe (DV-36), secure the 5-inch (127mm) inner pipe to the unit FIRST. Slide the 8-inch (203mm) outer pipe over the 5-inch (127mm) pipe and secure the pipe to the 8-inch (203mm) starting collar with a minimum of three (3) sheetmetal screws.

WARNING: MAKE CERTAIN THAT THE ELBOW ASSEMBLY OR STRAIGHT PIPE SECTION IS PUSHED ALL THE WAY ONTO THE STARTING COLLARS AND IS SECURELY FASTENED.

Continue adding vent components per the pre-planned system configuration. If the vent system is to terminate horizontally through a side wall, add components until the vent system is just short of the wall. Read and complete Sections 3.4 CUTTING THE HOLE THROUGH THE EXTERIOR WALL and 3.5 INSTALLING WALL SPACERS before continuing the installation.

Install the horizontal termination kit chosen to the last section of vent system installed. First attach the 5-inch (127mm) inner pipe of the termination kit to the crimped end of the last vent section - and be certain that the pipe seam is facing down. Next, attach the 8-inch (203mm) inner pipe to the last vent section, securing it with three (3) equally spaced sheetmetal screws. Slide the termination cap through the inner firestop and adjust it to its final position on the exterior of the building. See Figure 10. For round cap termination kits, use the exterior pipelock tab provided on the exterior firestop to secure the 8-inch (203mm) pipe in place. For square cap and trapezoid cap termination kits, secure the cap to the exterior wall through the flanges built into the cap. Use a high temperature fiberglass rope gasketing to seal between the 8-inch (203mm) pipe and the exterior firestop spacer.

NOTE: THE TERMINATION CAP MUST BE POSITIONED SO THAT THE VENT HOLES ARE ON THE BOTTOM AND THE ARROW IS POINTING UP. (SEE FIGURE 10).

If the vent system is to terminate vertically, proper minimum clearances and installation procedures for vertically terminating vent systems must be observed. Refer to SECTION 3.1.2 of this instruction manual and the detailed installation instructions found in the DVK-TVCD or DVK-TVCD termination cap kit.

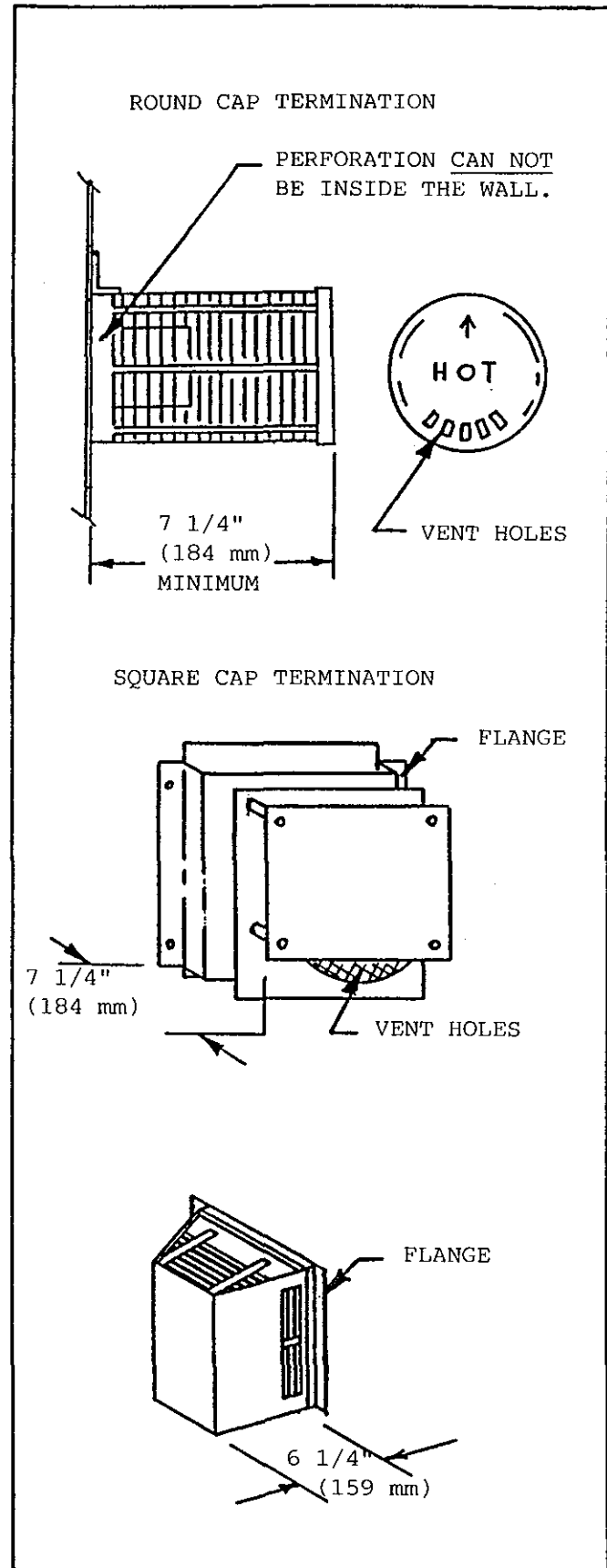
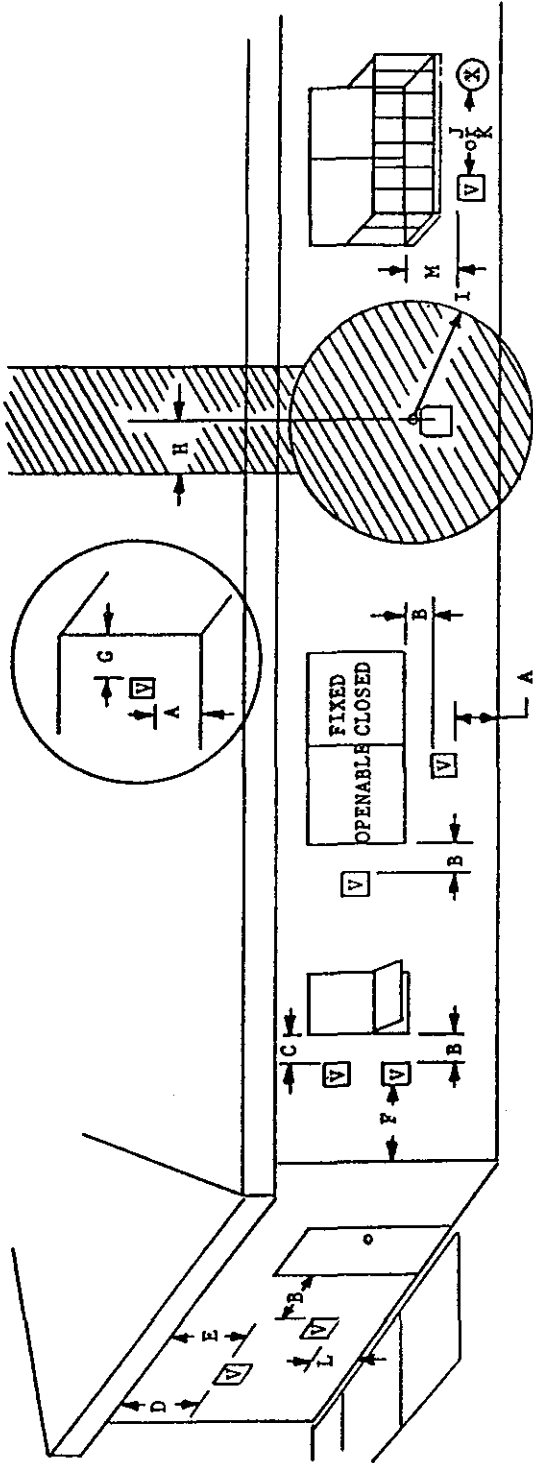


FIGURE 10

VENT TERMINATION MINIMUM CLEARANCES FOR MODEL 6000GDV (GDV-HSI) /6000GDVB



V = vent terminal
 X = air supply inlet
 = area where terminal is not permitted

clearances above grade, veranda, porch, deck or balcony
 clearance to window or door that may be opened
 clearance to permanently closed window
 vertical clearance to ventilated soffit located above the terminal within
 a horizontal distance of 2 feet (60 cm) from the centre-line of the terminal
 clearance to unventilated soffit
 clearance to outside corner
 clearance to inside corner

A = 12"
 B = 12"
 C = 9"
 D = 12"
 E = 18"
 F = 9"
 G = 6"

H = 3 feet
 I = 3 feet (U.S.A.)
 6 feet (Canada)
 J = 9" (U.S.A.)
 12" (Canada)
 K = 3 feet (U.S.A.)
 6 feet (Canada)
 * L = 7 feet
 ** M = 18"

not to be installed above a meter/regulator assembly within 3 feet
 (90 cm) horizontally from the centre-line of the regulator
 clearance to service regulator vent outlet
 clearance to non-mechanical air supply inlet to building or the combustion
 air inlet to any other appliance
 clearance to a mechanical air supply inlet
 clearance above paved side-walk or a paved driveway located on public property
 clearance under veranda, porch, deck or balcony

- a vent shall not terminate directly above a side-walk or paved driveway which is located between two single family dwellings and serves both dwellings.
- ** only permitted if veranda, porch, deck or balcony is fully open on a minimum of 2 sides beneath the floor.

NOTE: local Codes or Regulations may require different clearances

FIGURE 11

NOTE: SUPPORT SPACERS (DVK-SPS) **MUST** BE USED FOR EACH 5-FEET (1.55m) OF VERTICAL AND HORIZONTAL RUN. THE SPACERS ARE PLACED AROUND THE 8-INCH (203mm) DIAMETER PIPE AND NAILED OR SCREWED TO FRAMING MEMBERS.

WARNING: HORIZONTAL RUN SECTIONS **MUST** BE LEVEL AND PARALLEL WITH THE BASE OF THE FIREPLACE. UNDER NO CONDITION SHOULD COMBUSTIBLE MATERIAL BE CLOSER THAN 3-INCHES (76mm) FROM THE TOP OF THE 8-INCH (203mm) PIPE OR 1-INCH (25mm) TO SIDES AND BOTTOM FOR HORIZONTAL RUN SECTIONS OF THIS VENT SYSTEM. A 1-INCH (25mm) CLEARANCE TO COMBUSTIBLE MATERIALS ALL AROUND THE 8-INCH (203mm) PIPE **MUST** BE MAINTAINED FOR VERTICAL RISE SECTIONS.

3.4 CUTTING THE HOLE THROUGH THE EXTERIOR WALL

Locate the center of a 12-inch (305mm) square hole, which must be cut through the exterior wall of the building, by carefully measuring vertically from the base of the fireplace up to the center of the last section of horizontal vent run in the vent system. Add 1-inch (25mm) to the vertical measurement obtained and mark this center-point on the wall. When locating this hole it must be noted that the bottom of the vent termination cap must be a **MINIMUM** of 12-inches (305mm) above ground level (grade), the top of the cap must be a **MINIMUM** of 18-inches (457mm) below combustible material such as a deck and the side of the cap must be a **MINIMUM** of 6-inches (152mm) away from a parallel outside wall. See Figure 11 for Vent Termination Clearances.

3.5 INSTALLING WALL SPACERS

Position the interior firestop over the 12-inch (305mm) hole on the inside wall (Figure 12). Make sure that the spacer is put in properly (with arrows pointing up). For walls less than 8-inches (203mm) thick, the pipe shield will have to be trimmed back to a flush position. The exterior firestop should be installed once the unit is permanently positioned and anchored. (Section 3.6)

UNDER NO CONDITIONS SHOULD COMBUSTIBLE MATERIAL (INCLUDING SIDING) BE CLOSER THAN 3 INCHES (76mm) TO THE TOP OF THE 8-INCH (203mm) PIPE OR CLOSER THAN 1 INCH (25mm) ON THE SIDES AND BOTTOM.

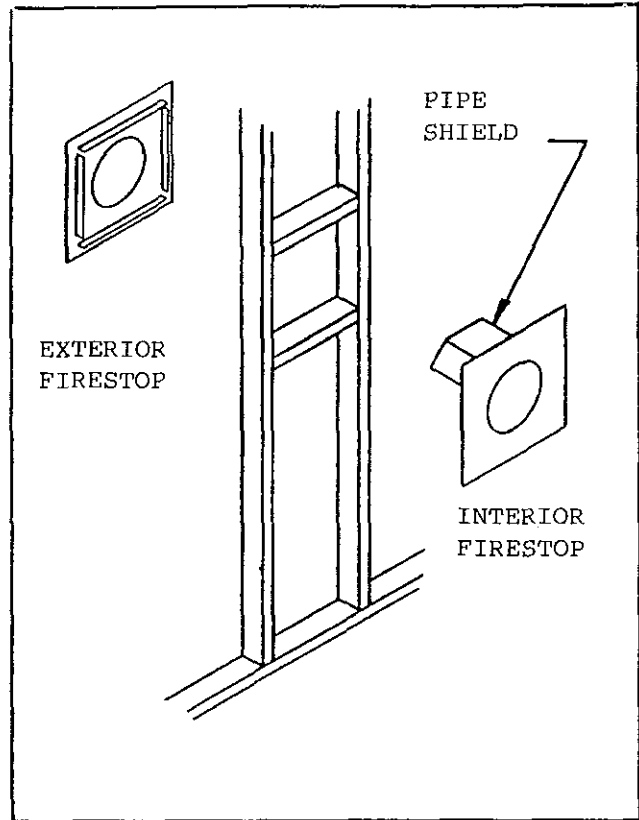


FIGURE 12

3.6 PERMANENTLY ANCHORING THE FIREPLACE

To prevent the unit from shifting, the fireplace must be anchored. Two methods are possible: use the nailing tabs as shown in Figure 13, or use the standoffs on the top of the fireplace. A nail may be driven through or a screw inserted through the framing headers into the top standoffs as shown in Figure 13.

The exterior firestop (8-inch (203mm) diameter hole) may now be placed over the pipe on the outside of the house and nailed in position, again the arrows must point up to provide proper clearances. When finished, the cap should be as shown in Figure 10, with the cap extended past the exterior firestop a **MINIMUM** dimension as shown. The cap **MUST** be positioned with the vent holes on the bottom and the arrow pointing **UP**.

3.7 CONNECTING THE GAS LINE

A listed 1/2-inch (12.5mm) manual shut-off valve and a swivel-nut fitting are connected to the 3/8-inch (9.5mm) inlet of the control valve. A 1/8-inch N.P.T plugged tapping, accessible for test gauge connection, should be provided in the gas supply line leading to the unit's shut-off valve. Have the gas line installed by a qualified service person in accordance with all building codes. Consult local building codes to properly size the gas supply line leading to the 1/2 inch (12.5mm) reduction for hook-up at the unit.

Locate the gas line access hole in the rear outer casing of the fireplace (Figure 14). Next, insert the gas supply line through the gas line hole from the outside of the fireplace and connect it to the gas valve. Support the control when attaching the pipe so that the pilot line is not bent or torn. After the gas pipe installation is complete, check carefully all gas connections for leaks with a soap solution. **DO NOT USE AN OPEN FLAME.** Use insulation to repack the space around the pipe. This should be inserted from the outside of the fireplace and packed tightly to totally seal between the pipe and the outer casing.

NOTE: THE GAS PIPE SHOULD NOT COME IN CONTACT WITH ANY WOOD STRUCTURES UNTIL IT HAS REACHED A POINT AT LEAST 1 INCH (25mm) AWAY FROM THE FIREPLACE SIDE.

NOTE: THE GAS SUPPLY LINE SHOULD BE PURGED OF ANY TRAPPED AIR PRIOR TO THE FIRST FIRING OF THE UNIT.

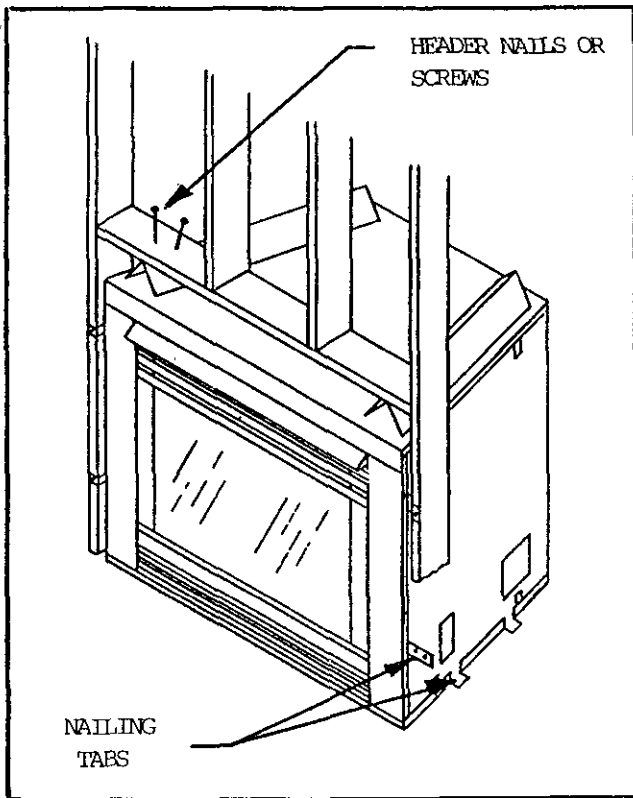


FIGURE 13

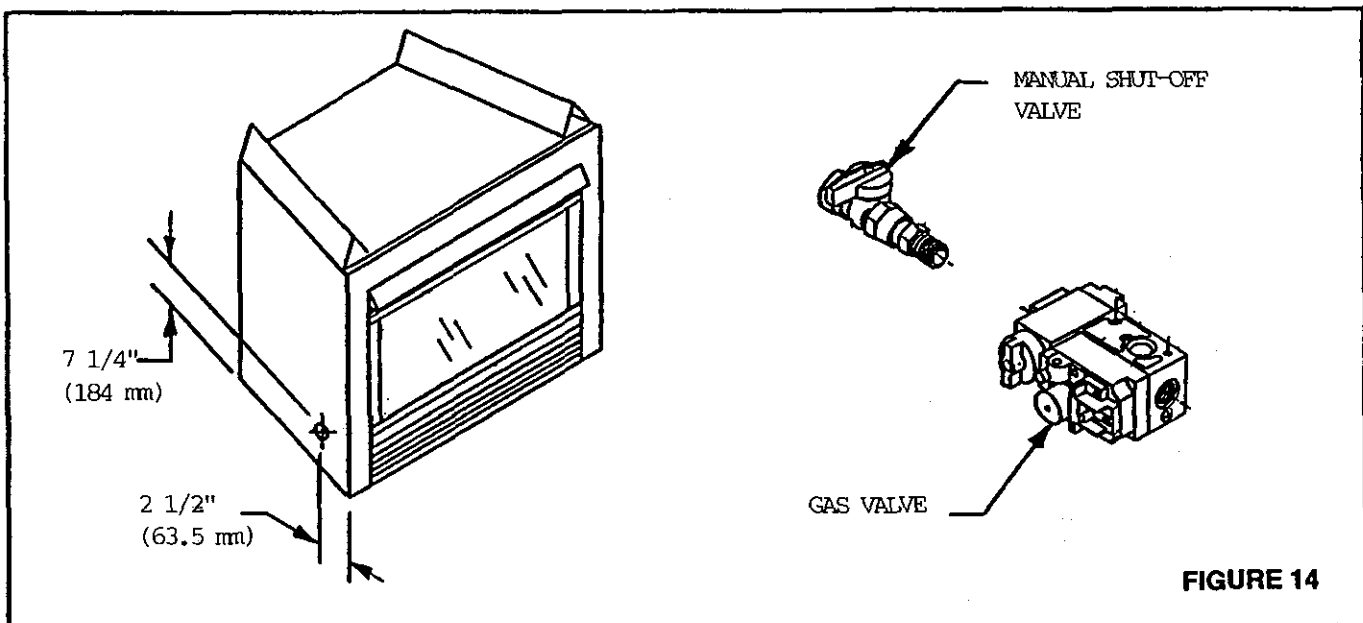


FIGURE 14

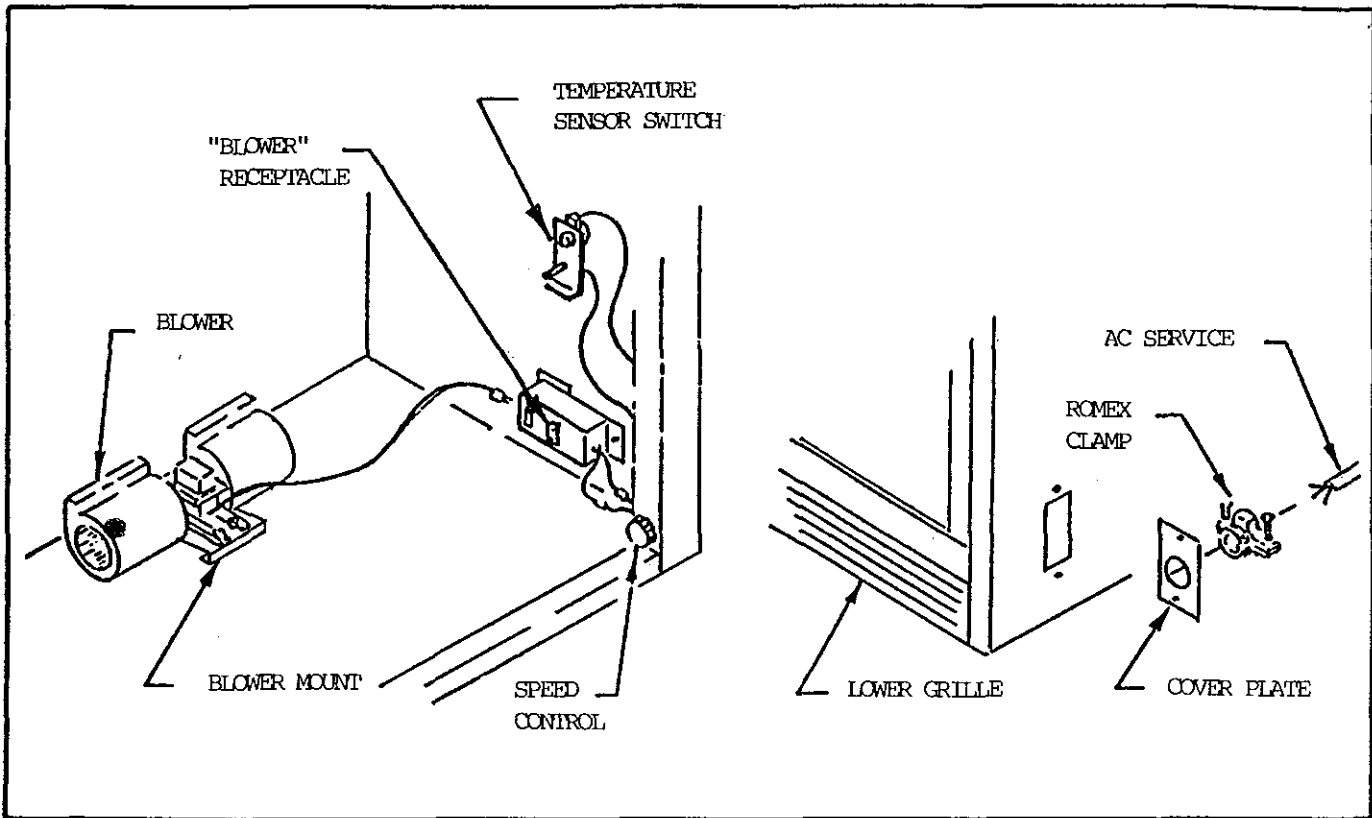


FIGURE 15

3.8 ELECTRICAL WIRING FOR OPTIONAL KITS

These models have factory installed Electrical Junction Boxes which are used ONLY for wiring in optional kits.

An optional blower kit with a magnetic blower mount (GFK-160A in North America) or (GFK-160-220 in Australia) and hand held remote control kit (RCH-09A) are available. Use of these options requires that the Junction Box (factory installed) be connected to 110 VAC (220 VAC in Australia) service before permanently enclosing the fireplace. The access hole for connecting the service wires is found on the lower front exterior side of the unit. See Figure 15.

3.8.1 INSTALLING ELECTRICAL SERVICE TO THE JUNCTION BOX

WARNING: TURN ELECTRICAL POWER OFF AT THE CIRCUIT BREAKER BEFORE BEGINNING INSTALLATION.

1. Remove the electrical cover plate from the lower side of the fireplace. Remove the knockout from the plate and attach the Romex clamp (screws to the outside).

2. Feed the electrical service wires through the Romex clamp and secure the wires to the clamp.

3. Using the wire nuts provided, connect the service wires to the Junction Box. The black wire to the black service wire, the white wire to the white service wire, and the service ground wire to the ground stud of the Junction Box.

4. Re-attach the cover plate to the outside of the fireplace.

Detailed instructions for the optional blower and the optional remote kits are included with each kit.

WARNING: DO NOT CONNECT 110-120 VAC OR 220 VAC TO THE GAS CONTROL VALVE OR CONTROL WIRING SYSTEM OF THIS UNIT.

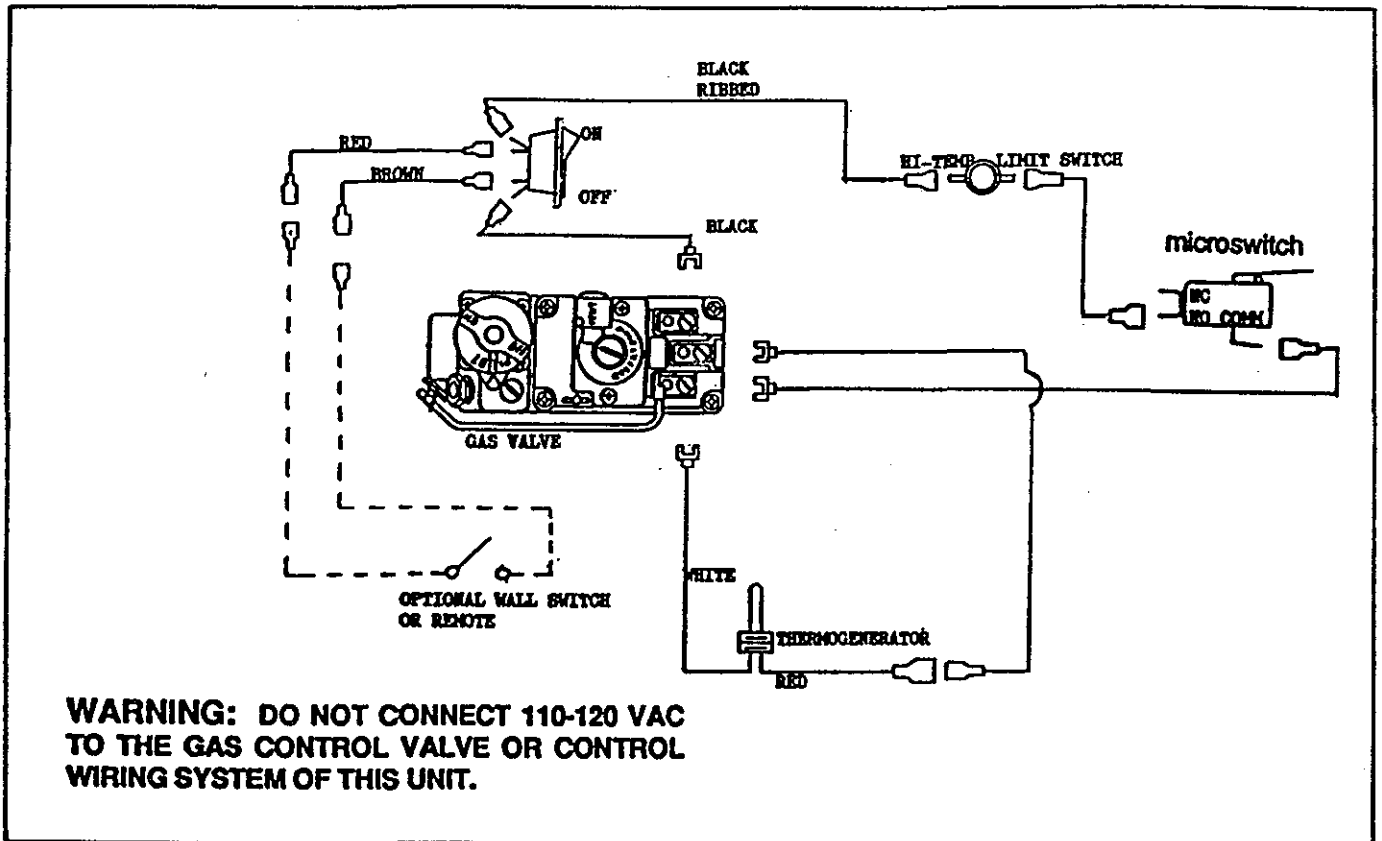


FIGURE 16

3.9 WALL SWITCH WIRING

An Optional Wall Switch Kit (WSK-21) for turning the fireplace ON/OFF is also available. This kit does NOT require 110 VAC or 220 VAC. Connect the low voltage wires from the wall switch to the red and brown pigtail wires from the ON/OFF rocker switch. These wires are labeled "FOR REMOTE OR WALL SWITCH ONLY". Turn the unit's ON/OFF rocker switch to the "OFF" position to use the wall switch. See Figure 16 - Unit Wiring Diagram.

NOTE: POSITION THE WALL SWITCH SO THAT A MAXIMUM OF 25 FEET (7.75m) OF WIRING FROM THE SWITCH TO THE FIREPLACE IS USED.

WARNING: DO NOT CONNECT 110- 120 VAC OR 220 VAC TO THE GAS CONTROL VALVE OR CONTROL WIRING SYSTEM OF THIS UNIT.

3.10 FINISHING

Finish the walls with the material of your choice. Do not install a combustible mantle or other combustible projection above the fireplace opening unless it is a minimum of 12 inches (305 mm) above the front edge of the hood (Figure 17).

When finishing the fireplace NEVER OBSTRUCT OR MODIFY THE AIR INLET/OUTLET GRILLES IN ANY MANNER.

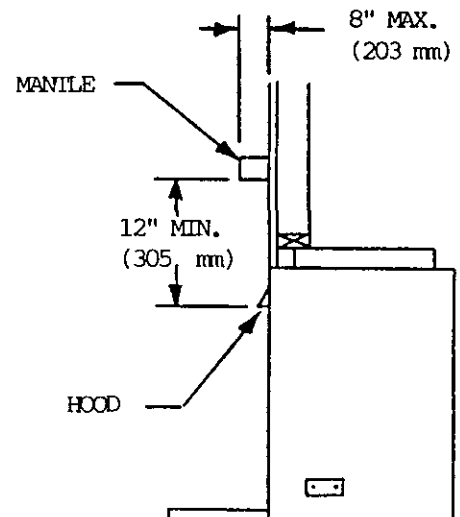


FIGURE 17

CAUTION: ALL JOINTS BETWEEN THE FINISHED WALL AND THE FIREPLACE SURROUND (TOP AND SIDES) CAN ONLY BE SEALED WITH 300 F (149C) MINIMUM SEALANT MATERIAL. ONLY NON-COMBUSTIBLE MATERIAL, USING A 300 F (149C) MINIMUM ADHESIVE IF NEEDED, CAN BE APPLIED AS FACING TO THE FIREPLACE SURROUND. SEE FIGURE 18.

DO NOT put any finishing material on the Vent Cap. DO NOT extend a combustible overhang more than 1- 1/2 inches (38mm) beyond the exterior wall itself, unless the overhang is at least 18 (457mm) inches above the cap (See Figure 11).

3.11 HEARTH EXTENSION

While a hearth extension may be desirable for aesthetic reasons, it is not required for decorative gas appliances per ANSI or CAN/CGA testing standards.

4.0 ELECTRICAL SAFETY SYSTEM

WARNING: DO NOT CONNECT 110-120 VAC OR 220 VAC TO THE GAS CONTROL VALVE OR CONTROL WIRING SYSTEM OF THIS UNIT.

The gas control system is wired so the thermopile, when heated with the pilot light, will provide approximately 350 to 500 millivolts. This activates the gas control valve. For protection, the glass door must be installed and sealed to work (this activates the micro switch). See Figure 19.

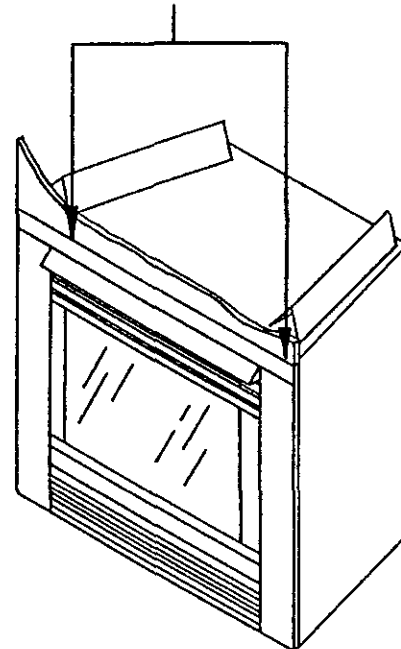
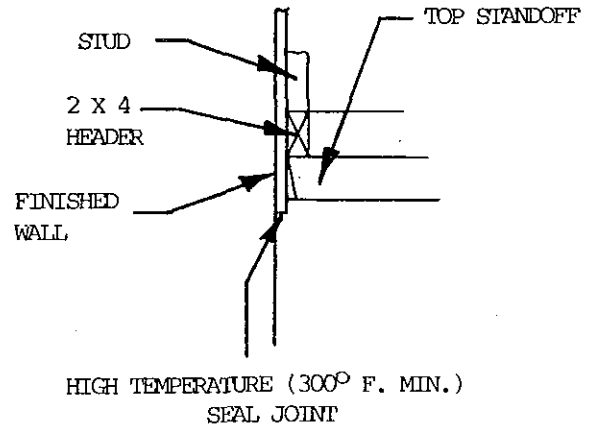


FIGURE 18

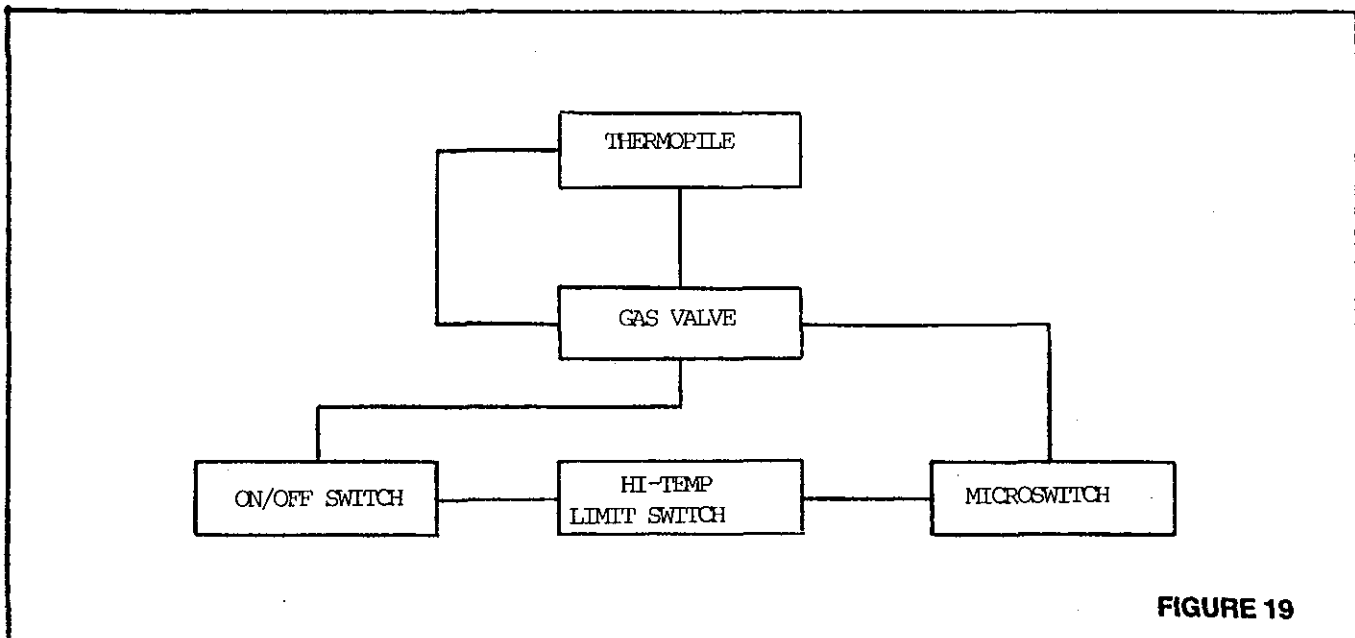


FIGURE 19

Additionally, a high temperature limit switch is used for protection and will close the main gas valve should a high surface temperature condition be encountered.

Access to the limit switch is obtained by removing the trim door and the heat deflector hood from the front of the unit. **DO NOT TOUCH THESE PARTS IF THE FIREPLACE IS HOT.** Use a pen or other small object to push in the red button on the back of the switch. The red button will **NOT** stay "in" until the fireplace cools. See Figure 20.

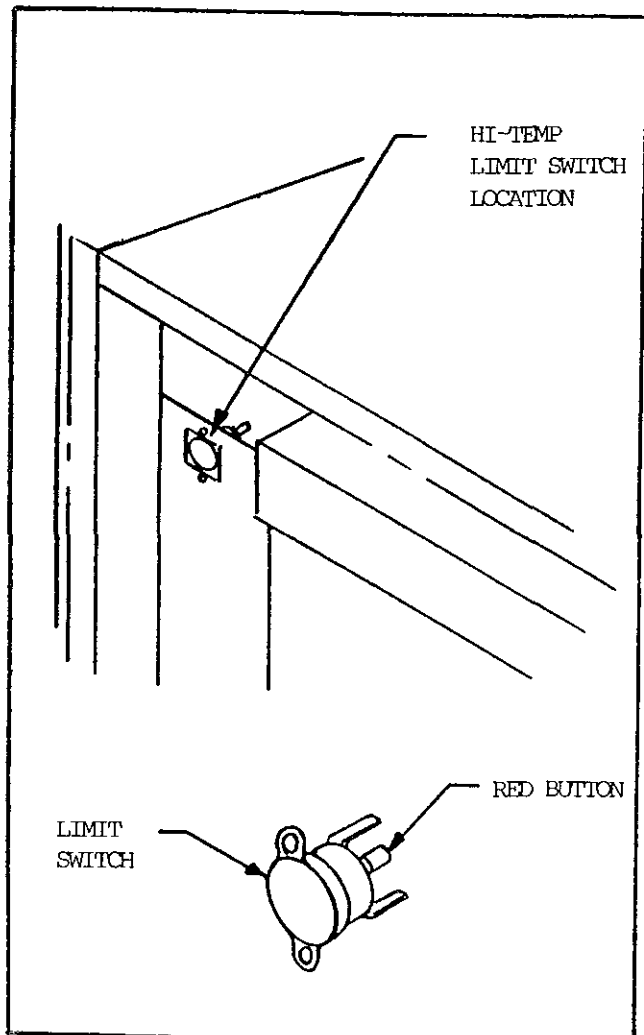


FIGURE 20

5.0 OPERATING GUIDELINES MAINTENANCE INSTRUCTIONS

Upon completing the gas line connection, a small amount of air will be in the lines. When first lighting the pilot light, it will take a few minutes for the lines to purge themselves of this air. Once the purging is complete, the pilot and burner will light and operate as indicated in the Instruction Manual.

Subsequent lightings of the appliance will not require such purging.

CAUTION: DURING THE INITIAL PURGING AND SUBSEQUENT LIGHTING'S **NEVER** ALLOW THE GAS VALVE CONTROL KNOB TO REMAIN DEPRESSED IN THE "PILOT" POSITION WITHOUT PUSHING THE RED IGNITOR BUTTON AT LEAST ONCE EVERY SECOND.

When lit for the first time, the appliance will emit a slight odor for an hour or two. This is due to paint and lubricants used in the manufacturing process. Additionally, for the first few minutes after each lighting, vapor may condense and fog the glass and the flames may be blue. After a few minutes this moisture will disappear and within 15-30 minutes the flames should become yellow.

The fireplace may produce a noise, caused from metal expansion and contraction as it heats up and cools down. This noise is similar to one that a furnace or heat duct may produce and does not affect the operation or longevity of the fireplace.

Keep the control compartment, logs, and burner area surrounding the logs clean by vacuuming or brushing at least twice a year.

CAUTION: THE LOGS CAN GET VERY HOT - HANDLE ONLY WHEN COOL.

Always turn off gas to the pilot before cleaning. For relighting, refer to lighting instructions located behind the lower front trim assembly.

The appliance and venting system should be inspected before initial use and at least annually by a qualified field service person.

Always keep the appliance area clear and free from combustible materials, gasoline, and other flammable vapors and liquids.

Never obstruct the flow of combustion and ventilation air. Keep the front of the appliance clear of all obstacles and materials.

To obtain proper operation, it is imperative that the pilot and main burner flame characteristics are steady, not lifting or floating. Typically, the top 3/8-inch (9.5mm) at the pilot generator should be engulfed in the pilot flame (Figure 21).

WARNING: CHILDREN AND ADULTS SHOULD BE ALERTED TO THE HAZARDS OF HIGH SURFACE TEMPERATURE AND SHOULD STAY AWAY TO AVOID BURNS OR CLOTHING IGNITION. YOUNG CHILDREN SHOULD BE CAREFULLY SUPERVISED WHEN THEY ARE IN THE SAME ROOM AS THE APPLIANCE.

IMPORTANT: TURN OFF GAS BEFORE SERVICING APPLIANCE. IT IS RECOMMENDED THAT A COMPETENT SERVICE TECHNICIAN PERFORM THESE CHECK-UPS AT THE BEGINNING OF EACH HEATING SEASON.

WARNING: DO NOT USE ABRASIVE CLEANERS ON THE GLASS DOOR ASSEMBLY. DO NOT ATTEMPT TO CLEAN THE GLASS DOOR WHEN IT IS HOT.

Inspect the external vent cap on a regular basis to make sure that no debris is interfering with the air flow.

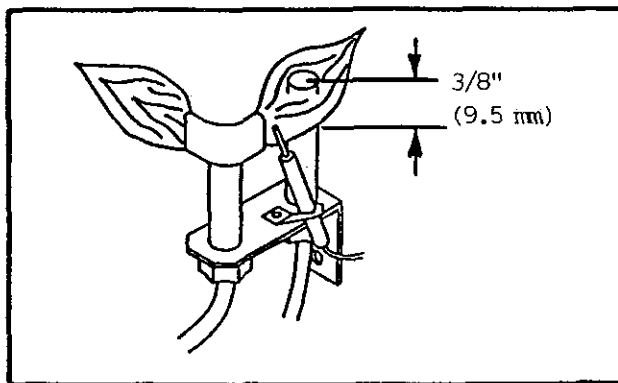


FIGURE 21

5.1 GLASS DOOR REMOVAL

1. To remove the glass door, you must remove the mesh trim front panel by lifting it up off the retainer pins on the side surrounds and pulling it away from the unit.

2. Noting carefully how the brackets fit on the glass, remove wing nuts and brackets from the glass door.

3. The glass door is now ready for removal.

5.2 CLEANING BURNER AND PILOT

In order to properly clean the burner and pilot assembly, turn off the gas to the unit and remove the logs exposing the burner and pilot assembly. Clean all foreign materials from top of burner. Check to make sure that the burner orifice is clean.

Visually inspect the pilot periodically. Brush or blow away any dust or linen accumulations. If the pilot orifice is plugged, disassembly may be required to remove any foreign material from the orifice or tubing. When the appliance is put back in service check burner flame patterns with Figure 22.

5.3 LOG REPLACEMENT

1. Remove the mesh trim and glass door assemblies (See Section 5.1).

2. The Log(s) can now be removed as required. Replace the log(s) as previously shown in Figure 2 - Gas Log Positioning. Replace glass door and mesh trim.

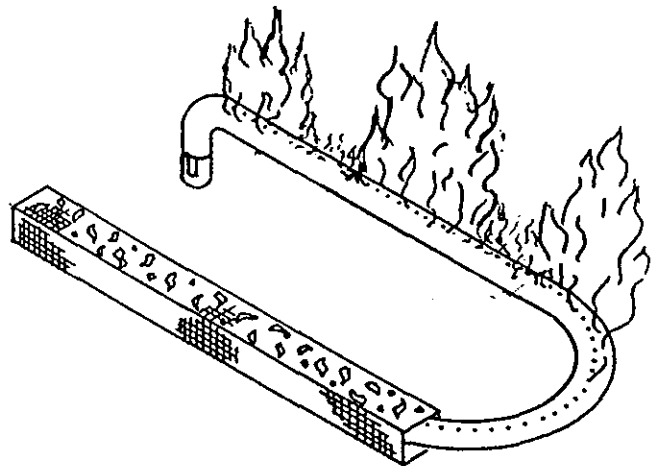


FIGURE 22

5.4 GLASS DOOR REPLACEMENT

1. Before replacing the glass door make sure the vermiculite material is spread evenly over the bottom of the firebox and the logs are properly positioned.
2. Place the bottom edges of the glass door on the rubber spacers of the bottom mounting studs on the fireplace. Be certain that the top corner of the door pushes against the MICROSWITCH paddle.

NOTE: IF THE GLASS DOOR DOES NOT PUSH AGAINST THE MICROSWITCH, THE BURNER WILL NOT STAY LIT.

3. With glass door in place push glass against unit and at the same time put brackets on upper portion of door and tighten the wing nuts provided.
4. Attach the brackets at the sides and bottom of the glass and hand tighten.

NOTE: WING NUTS THAT SECURE THE GLASS ONLY NEED TO BE HAND TIGHTENED TO GIVE A SNUG FIT FOR PROPER GASKET SEAL. OVER-TIGHTENING MAY RESULT IN DAMAGED GLASS.

5. Replace the mesh trim front proceeding in reverse order of step 1 under Glass Door Removal.

6.0 SAFETY INFORMATION

FOR YOUR SAFETY READ BEFORE LIGHTING

WARNING: IF YOU DO NOT FOLLOW THESE INSTRUCTIONS EXACTLY, A FIRE OR EXPLOSION MAY RESULT CAUSING PROPERTY DAMAGE, PERSONAL INJURY, OR LOSS OF LIFE.

A. This appliance has a pilot. When lighting the pilot, follow these instructions exactly.

B. BEFORE LIGHTING smell all around the appliance area for gas. Be sure to smell next to the floor because some gas is heavier than air and will settle on the floor.

WHAT TO DO IF YOU SMELL GAS

- Do not try to light any appliance
- Do not touch any electric switch: do not use any phone in your building.
- Immediately call your gas supplier from a neighbor's phone. Follow the gas supplier's instructions.
- If you cannot reach your gas supplier, call the fire department.

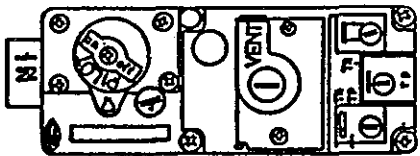
C. Use only your hand to push in or turn the gas control knob. Never use tools. If the knob will not push in or turn by hand, don't try to repair it. Call a qualified service technician. Forced or attempted repair may result in a fire or explosion.

D. Do not use this appliance if any part has been under water. Immediately call a qualified service technician to inspect the appliance and to replace any part of the gas control system which has been under water.

7.0 LIGHTING INSTRUCTIONS

LIGHTING INSTRUCTIONS

1. "STOP!" Read the safety information above first.
2. To access controls rotate the bottom grille down.
3. Turn the valve control knob to the OFF position. To do this, you must turn the knob clockwise to the pilot position, and then press in and continue turning clockwise to the OFF position.



GAS CONTROL VALVE

4. WAIT FIVE (5) MINUTES TO CLEAR OUT ANY GAS. Then smell for gas, including near the floor. If you then smell gas, STOP! Follow "B" in the safety information above. If you don't smell gas, go to the next step.
5. The pilot should not require accessing for lighting purposes. The pilot is located inside the combustion chamber. If it is necessary to access the pilot, follow the instructions in Section 5.1 and 5.4 for glass door removal and replacement.

THERMOPILE



PILOT BURNER

6. To put the control in the pilot position, turn the control knob counter-clockwise to the pilot position.
7. To light the pilot depress the control knob and then depress the red piezo button until it makes a clicking sound. It may be necessary to repeat this step. If the pilot does not light after 10 seconds, go back to step 3. The control knob should be held down for a MINUTE after pilot ignition. If the pilot will not stay lit after two tries, turn the control knob to the "OFF" position and call your service technician or gas supplier. If the control knob does not pop out when released, STOP-shut off the gas supply to the fireplace control valve, and IMMEDIATELY call your service technician or gas supplier.
8. After the pilot has been lit, the burner can be turned on by turning the knob counter-clockwise to the "ON" position. Flip the ON/OFF switch to the "ON" position.
9. Close the bottom grille.

TO TURN OFF GAS TO APPLIANCE

1. Open the bottom grille.
2. Turn ON/OFF switch to "OFF".
3. Turn the valve control knob clockwise to the "Pilot" position then depress knob and continue turning to "OFF" position.
4. Close the bottom grille.

After the unit has warmed up (i.e. approx. 15 min.), flame height should be slightly (about 2" (51mm) below the top of the mesh trim assembly (Figure 23). If the flame height is higher than this, adjustments must be made to prevent overheating the gasket and glass. Please contact your dealer or a qualified service-person to replace the orifice or adjust the valve.

NOTE: THE TIPS OF THE FLAMES SHOULD NEVER HIT THE TOP OF THE FIREBOX.

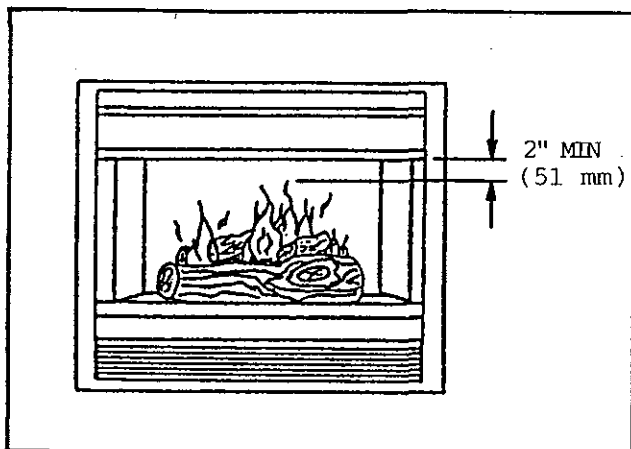


FIGURE 23

LPG (PROPANE) WARNING

THE FOLLOWING WARNING APPLIES TO INSTALLATIONS USING L.P. (PROPANE) GAS:

WARNING: To avoid possible injury, fire and explosion, please read and follow these precautions and all instructions on this appliance before lighting the pilot. This appliance uses L.P. (Propane) gas which is heavier than air and will remain at floor level if there is a leak. Before lighting, smell at floor level and/or use other means (such as using a soap solution on all piping and connections, using a gas detector, etc.) to check for gas leaks. NOTE: L.P. (Propane) gas can become odorless and CANNOT always be detected by smell. If you smell gas, detect a gas leak, or suspect that a gas leak exists, follow these rules.

1. Get all people out of building.
2. DO NOT light matches. DO NOT turn electric lights or switches on or off in area. DO NOT use an electric fan to remove gas from area. DO NOT use a telephone inside the building.
3. Shut off gas at L.P. tank outside of building.
4. Telephone gas company and fire department. Ask instructions.

Before hanging up, give your name, address, and phone number. DO NOT go back into building.

If your L.P. tank runs out of fuel, turn off gas at the appliance. After L.P. tank is refilled, appliance must be re-lit according to manufacturer's instructions. If the gas control has been exposed to WATER in any way, DO NOT try to use it. It must be replaced. DO NOT attempt repair on gas control or appliance.

Tampering is DANGEROUS and voids all warranties. Any component that is found to be faulty, must be replaced with an approved component.

8.0 HIGH ALTITUDE INSTALLATION

A.G.A. Design Certified units are tested and approved for elevations from 0-2000 feet. CGA approved units are certified for elevations from 0-4500.

When installing this unit at an elevation above 2000 feet, (in United States) it may be necessary to decrease the input rating by changing the existing burner orifice to a smaller size. Input should be reduced 4 percent for each 1000 feet above sea level. Check with your local gas company for help in determining the proper orifice size.

When installing this unit at an elevation between 0-4500 feet (in Canada) the input rating does not need to be reduced.

When installing this unit at an elevation above 4500 feet (in Canada), check with local authorities.

Consult your local gas company for assistance in determining the proper orifice for location.

9.0 TROUBLE SHOOTING - 6000GDV/6000GDVB

With proper installation and maintenance, your new Gas Fireplace should provide years of trouble-free service. If you do experience a problem, refer to the trouble shooting guide shown below. This guide will assist a qualified service person in the diagnosis of problems and the corrective action to be taken.

SYMPTOM	POSSIBLE CAUSE	CORRECTIVE ACTION
I. Spark ignitor will not light pilot after repeated triggering of red button.	A. Defective ignitor (no spark at electrode.)	1. Check for spark at electrode and pilot; if no spark and electrode wire is properly connected, replace ignitor.
	B. Defective pilot or misaligned electrode (spark at electrode).	1. Using a match, light pilot. If pilot lights, turn off pilot and trigger the red button again. If pilot lights, an improper gas/air mixture caused the bad lighting and a longer purge period is recommended. If pilot will not light - check gap at electrode and pilot - should be 1/8 inch (3.2mm) to have a strong spark. If OK, replace pilot.
	C. No gas or low gas pressure.	1. Check unit's shut-off valve and remote shut off valves from fireplace. Usually there is a valve near the main. There can be more than one (1) valve between the fireplace and main. 2. Low pressure can be caused by a variety of situations such as a bent line, too narrow diameter of pipe or even low line pressure. Check for kinked lines. If none, consult with plumber or gas supplier.
	D. No L.P. in tank.	3. Check L.P. (Propane) tank. You may be out of fuel.
II. Pilot will not stay lit after carefully following lighting instructions.	A. Defective thermopile.	1. Check pilot flame. Must impinge on thermopile. Clean and or adjust pilot for maximum flame impingement on thermopile. 2. Be sure wire connections from thermopile at gas valve terminals are tight and thermopile is fully inserted into pilot bracket.

SYMPTOM	POSSIBLE CAUSE	CORRECTIVE ACTION
		<p>3. Check thermopile with millivolt meter. Take reading at "TH-TP & TP" terminals of gas valve. Should read 325 millivolts minimum while holding valve knob depressed in pilot position, pilot lit, and "on/off" switch "OFF". Replace faulty thermopile if reading is below specified minimum.</p> <p>4. Disconnect thermopile leads from the valve. With pilot burner "ON", take reading at thermopile leads - should read 325 millivolts minimum. Replace thermopile if reading is below this minimum.</p>
	B. Open wire connection in pilot circuit.	1. Check wire continuity and connection in pilot circuit.
	C. Defective valve.	1. Disconnect the thermopile's red wire from the micro-switch and connect to terminal "TP" on the gas valve. Turn green knob to pilot position, depress and light pilot light. If meter reading is greater than 325 m.v. after 30 seconds, the pilot generator is good. If pilot does not stay lit, the valve is defective. If the meter reading is less than 325 m.v., the thermopile is defective.
III. Pilot burning, no gas burner, valve knob "ON", "on/off" switch "ON".	A. "On-off" switch or wires defective.	1. Check "on/off" switch and wires for proper connections. Please jumper wires across terminals at switch - if burner comes on, replace defective switch. If OK, place jumper wires across switch wires at gas valve - if burner comes on, wires are faulty or connections are bad.
	B. Glass door does not fully depress microswitch.	1. Adjust glass so it fully depresses the microswitch. (Do not operate the unit with broken or cracked glass).

SYMPTOM	POSSIBLE CAUSE	CORRECTIVE ACTION
		<p>2. If fully depressed, place jumper wires across connectors and if it allows you to re-ignite, the switch should be replaced. Do not operate unit with jumper wires in place. When jumper wire is in place and the unit won't re-ignite, you may have problems with the wiring or connectors.</p>
	<p>C. Defective or "open" Hi-temp. limit switch</p>	<p>1. Check that the red button on back of Hi-temp. limit switch remains pushed in.</p>
	<p>D. Thermopile may not be generating sufficient millivoltage. (325 m.v.)</p>	<p>1. Recheck Symptom #2. 2. Pilot flame not physically close enough to the thermopile.</p>
	<p>E. Defective valve.</p>	<p>1. Turn valve knob to "ON" place "on-off" switch to "ON". Check with millivolt meter at thermopile terminals. Millivolt meter should read greater than 100 m.v. If the reading is okay and the burner does not come on, replace the gas valve.</p>
	<p>F. Plugged burner orifice.</p>	<p>1. Check burner orifice for stoppage and remove.</p>
	<p>G. Wall switch or wires defective.</p>	<p>1. Follow corrective action in A.1 above; check switch and wiring. Replace where defective.</p>
<p>IV. Frequent pilot outage problem.</p>	<p>A. Pilot flame may be too low or blowing (high), causing the pilot safety to drop out.</p>	<p>1. Clean and adjust pilot flame for maximum flame impingement on thermopile.</p>
<p>V. Main burner goes out while being in operation.</p>	<p>A. High limit switch is defective or has reached its maximum temperature.</p>	<p>1. Allow unit to cool and re-set the red button by pushing it in. Then repeat lighting instructions. 2. If 1 above does not allow for ignition, check high limit switch. Place jumper wires across high limit switch. If you can re-ignite the pilot, your high limit switch is defective. Do not use fireplace until high limit switch is replaced as this is an important safety feature. If the unit does not light with jumper wires in place, the wires may be defective or the connectors are bad.</p>

SYMPTOM	POSSIBLE CAUSE	CORRECTIVE ACTION
	B. Door microswitch is not fully depressed or defective.	<p>1. Adjust glass so it fully depresses the microswitch. (Do not operate unit with broken or cracked glass)</p> <p>2. If fully depressed, place jumper wires across connectors and if it allows you to re-ignite, the switch should be replaced. Do not operate unit with jumper wires in place. When jumper wire is in place and the unit won't re-ignite, you may have problems with the wiring or connectors.</p>
	C. No L.P. in tank.	1. Check L.P. (Propane) tank. You may be out of fuel.
	D. Inner 5-inch (12.7mm) pipe leaking exhaust gases back into system.	1. Check for leaks.
	E. Horizontal vent improperly pitched.	1. Horizontal vent termination should slope down only enough to prevent any water from entering unit. The maximum downward slope of the vent termination is 1/4" (6.4mm) for any horizontal run.
	F. Glass too loose and air tight gasket leaks in corners after usage.	1. Tighten corner.
	G. Bad thermopile.	1. Replace if necessary.
	H. Improper vent cap installation.	1. Check for proper installation & freedom from debris or blockage.
VI. Glass soots	A. Flame impingement on logs.	1. Adjust the log set so that the flame does not impinge on it.
	B. Improper venturi setting.	1. Adjust the air shutter at the base of the burner.
	C. Debris around venturi.	1. Inspect the opening at the base of the burner. It is imperative that NO material be placed in this opening.
VII. Flame burns blue and lifts off burner.	A. Insufficient oxygen being supplied.	1. Check to make sure vent cap is installed properly and free of debris. Make sure that vent system joints are tight and have no leaks.

SYMPTOM**POSSIBLE CAUSE****CORRECTIVE ACTION**

2. Check to make sure that no material has been placed in the opening at the burner base or in the area of the air holes in the center of the base pan beneath the burner.

3. Be sure glass is tightened properly on unit, particularly on top corners.

11.0 MODEL 6000GDV-HSI

FOR ELECTRONIC IGNITION SYSTEM

(NOT FOR USE IN CANADA OR AUSTRALIA)

This unit requires 110VAC service in order to operate. Connection to house wiring should ONLY be done by a Qualified Electrician.

FOR YOUR SAFETY READ BEFORE OPERATING HSI CONTROLS

WARNING: If you do not follow these instructions exactly, a fire or explosion may result causing property damage, personal injury or loss life.

A. This appliance does not have a pilot. It is equipped with an ignition device which automatically lights the burner. Do not try to light the burner by hand.

B. BEFORE Operating smell all around the appliance area for gas. Be sure to smell next to the floor because some gas is heavier than air and will settle on the floor.

WHAT TO DO IF YOU SMELL GAS

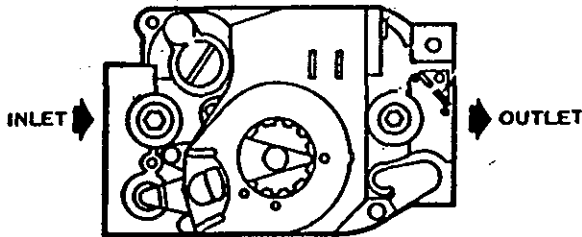
- * Do not try to light any appliance.
- * Do not touch any electric switch, do not use any phone in your building.
- * Immediately call your gas supplier from a neighbor's phone. Follow the gas supplier's instructions.
- * If you cannot reach your gas supplier, call the fire department.



C. Use only your hand to turn the gas control knob. Never use tools. If the knob will not turn by hand, don't try to repair it, call a qualified service technician. Force or attempted repair may result in a fire or explosion.

D. Do not use this appliance if any part has been under water. Immediately call a qualified service technician to inspect the appliance and to replace any part of the control system and any gas control which has been under water.

LIGHTING INSTRUCTIONS
6000GDV-HSI CONTROLS
(NOT FOR USE IN CANADA OR AUSTRALIA)

1. **STOP!** Read the safety information on the "For Your Safety Read Before Operating" label.
2. Turn off all electric power to the appliance.
3. This appliance is equipped with an ignition device which automatically lights the burner. Do not try to light the burner by hand.



4. Turn gas control knob clockwise to "OFF". 
5. Wait five (5) minutes to clear out any gas. Then smell for gas, including near the floor. If you then smell gas, **STOP!** Follow "B" in the safety information on the label located on the previous page. If you don't smell gas, go to next step.
6. Turn on all electric power to the appliance.
7. Turn gas control knob counter-clockwise to "ON". 
8. Flip ON/OFF rocker switch to "ON" and close access grille.
9. If the appliance will not operate, follow the instructions "To Turn Off Gas To Appliance" and call service technician or gas supplier.

TO TURN OFF GAS TO APPLIANCE

1. Flip ON/OFF switch to "OFF".
2. Turn off all electric power to the appliance if service is to be performed.
3. Turn gas control knob clockwise to "OFF". Do not force. 