

Log Set Assembly: LOGS-550F

LOG PLACEMENT INSTRUCTIONS

Models: SL-550F, SL-550F-LP, SL-5F, SL-5F-IFT

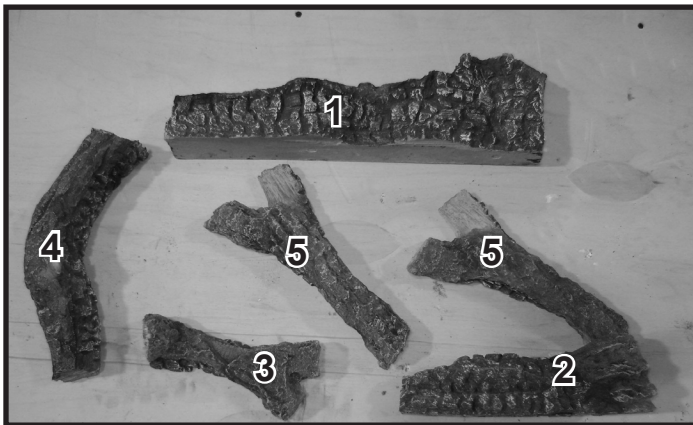


Figure 1.

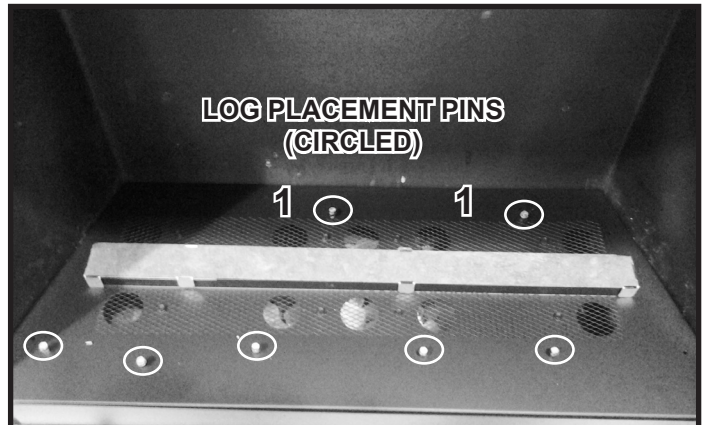


Figure 2. Location of Log Placement Pins and Corresponding Log #'s

CAUTION: Logs are fragile, handle with care. **Log #1 (SRV2297-700):** Place Log #1 into position by holding it upright and placing it onto the pins on the back of the basepan. See Figure 3. Log #1 will sit upright as shown in Figure 4.

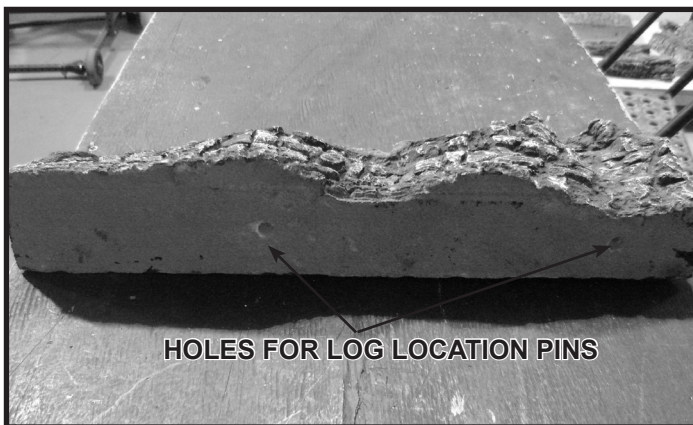


Figure 3. Log #1 - Bottom View

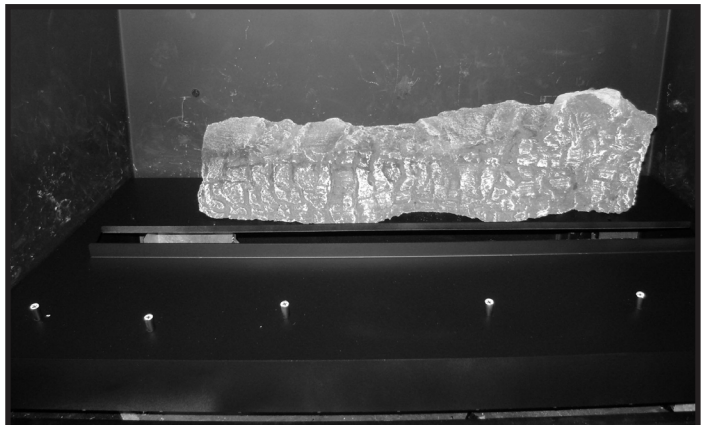


Figure 4. Log #1 in Position

Log #2 (SRV2033-709): Log #2 has holes on the bottom side that will be used for positioning them in the firebox. See Figure 5. Place Log #2 on the pins in the front of the firebox as shown in Figure 6.

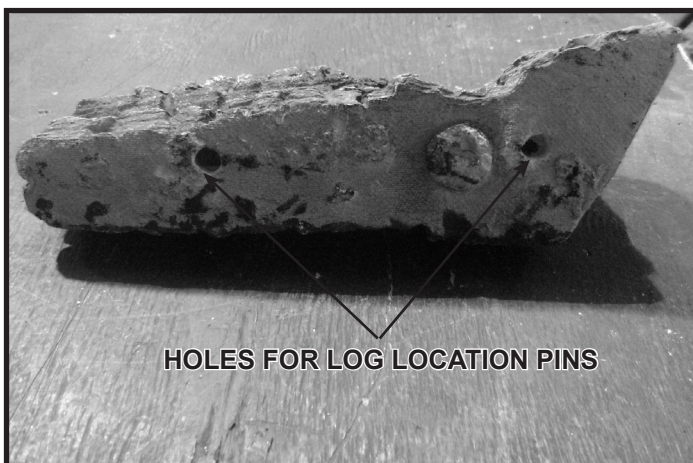


Figure 5. Log #2 - Bottom View

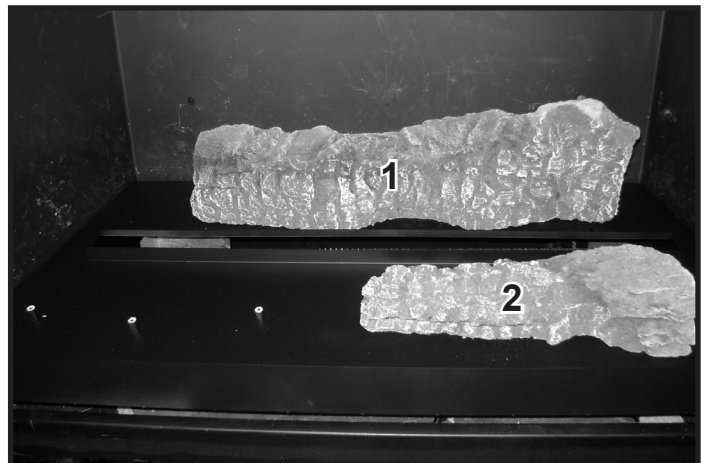


Figure 6. Log #2 in Position



Figure 7. Log #3 Bottom View

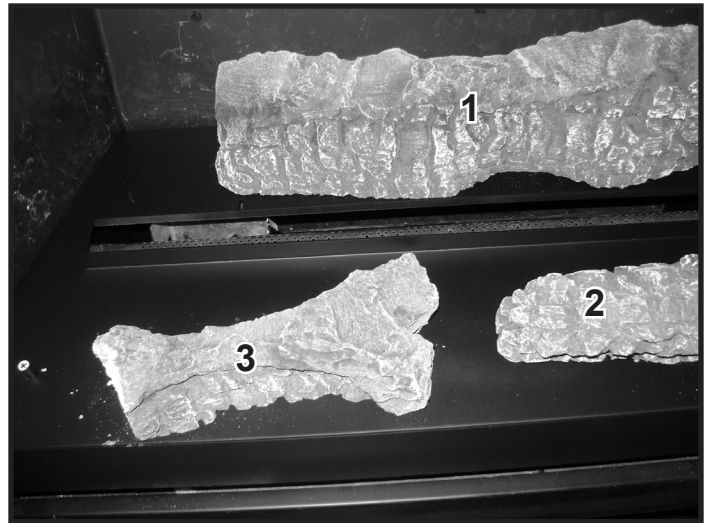


Figure 8. Log #3 in Position

Log #3 (SRV2033-708): Log #3 also has holes on the bottom side that will be used for positioning it in the firebox. See Figure 7. Place the two holes on the bottom of Log #3 onto the pins on the left side of the basepan as shown in Figure 8.

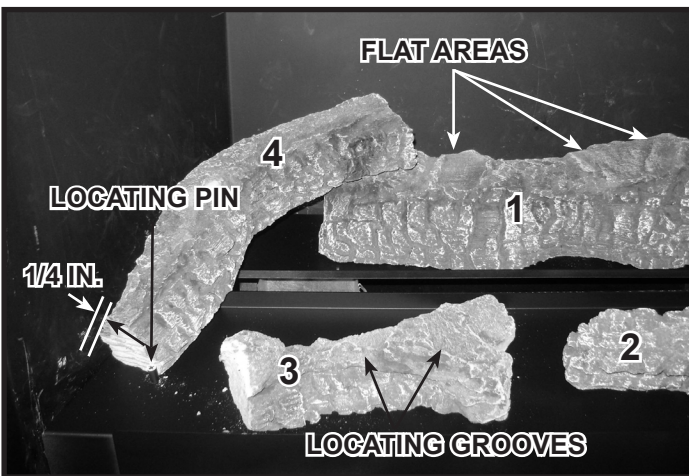


Figure 9. Log #4 in Position




Figure 10. Lava Rock and Rock Jig

Log #4 (SRV2033-721): Place Log #4 on the left side of the firebox as shown in Figure 9. Position one end on the flat spot on the top of Log #1 and place the other end against the locating pin on the basepan. There should be a gap of approximately 1/4 inch between the bottom left edge of the log and the firebox.

LAVA ROCK (4021-297): Place lava rock on the base pan and around the logs as shown in Figure 10. Use the supplied rock jig to prevent the rock from going in between the base pan and burner. **DO NOT** allow any lava rock to fall in the slot and onto the burner.

Note: When applying Lava Rock or Media in areas of the base pan that is covered by mesh, apply only one layer of Lava Rock or Media.

⚠ WARNING	
 <p>RISK OF EXPLOSION!</p> <ul style="list-style-type: none"> Place lava rock according to instructions. Do NOT place lava rock on burner top. Do NOT place lava rock in a position that they may fall into area in front of pilot. 	<ul style="list-style-type: none"> Use ONLY Hearth & Home Technologies-approved optional media with this appliance. Do NOT use more than 3 pounds of lava rock per fireplace. Improperly placed lava rock interferes with proper burner operation. <p>Delayed ignition may occur.</p>

Remove the rock jig by removing the shipping screw on the back. Keep the rock jig and screw in the lower cavity of the appliance. It will be needed for future cleaning of the logs and lava rock or servicing of the appliance. Once the rock jig is removed, visually inspect the burner area to ensure that no lava rock is there. See Figure 11.



Figure 11. Rock Jig Removed

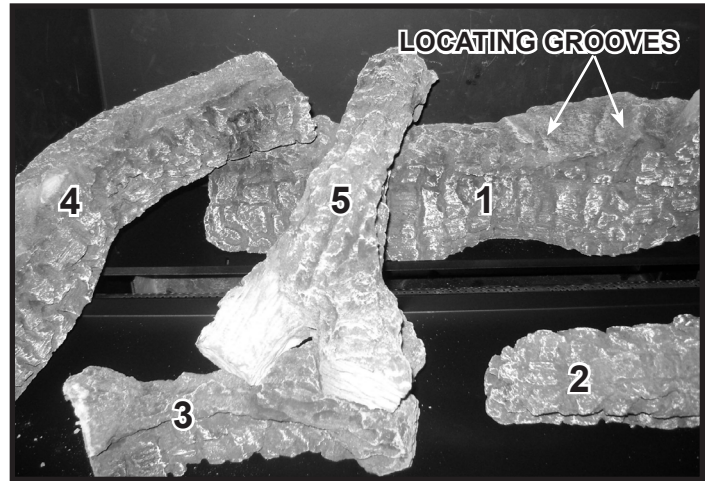


Figure 12. Log #5 (1st of 2)

Log #5 (SRV2033-720): Log #5 is used twice in this log set. The left log is located by placing the “Y-Shaped” end on the locating grooves of Log #3 and setting the other end on the flat area of Log #1. See Figure 9 to reference locations of flat areas and grooves. Figure 12 shows the left side Log #5 in position. The right side Log #5 is located by placing the “Y-Shaped” end on the locating grooves of Log #1 and setting the other end on the right side log #2. See Figure 12 and Figure 13. The log should be approximately 1-1/2 inch from the end of Log #2. See Figure 14.



Figure 13. Log #5 (2nd of 2)



Figure 14. Log #5 Placement



Figure 15. Logs-550F Installed