

GLASS550-LINER, GLASS750-LINER, LINER-32B-BK, LINER-36B-BK

Models: SL-550F, SL-750F, ECLIPSE-32, ECLIPSE-36, SL-5F, SL-7F, SL-5F-IFT, SL-7F-IFT

-Glass Refractory Panel Installation Instructions-



Leave this manual with party responsible for use and operation.

CAUTION! Risk of Cuts or Abrasions. Wear protective gloves and safety glasses during installation.

KIT COMPONENTS

- (3) Glass Refractory Panels
- (9) Glass Tabs
- (9) Self-Tapping Screws

Instructions

1. Install the six glass tabs using the supplied screws. Locate the pilot holes on the base pan and fasten the glass tabs to the base pan. See Figure 1.

Note: When installing glass tabs use the hole furthest from the bend as shown in Figure 2.

2. Install the back piece of glass refractory first. The smooth side is the visible side and is installed facing outward. Insert the top of the glass at an angle as shown in Figure 3. Install one of the glass tabs provided with a self-tapping screw to hold the top of the back glass panel in place. See Figure 4 for the glass tab installation location.

Note: Do not completely tighten the self-tapping screw that secures the glass tab to the back glass panel. Leave a slight gap that will allow the tab to move slightly back and forth. The width of the gap should be approximately the same thickness as the tape of a standard tape measure.

Push the bottom of the glass panel flush to the back of the firebox. All glass pieces should rest on the flats of the glass tabs as shown in Figure 5. Figure 6 shows the back piece installed properly.

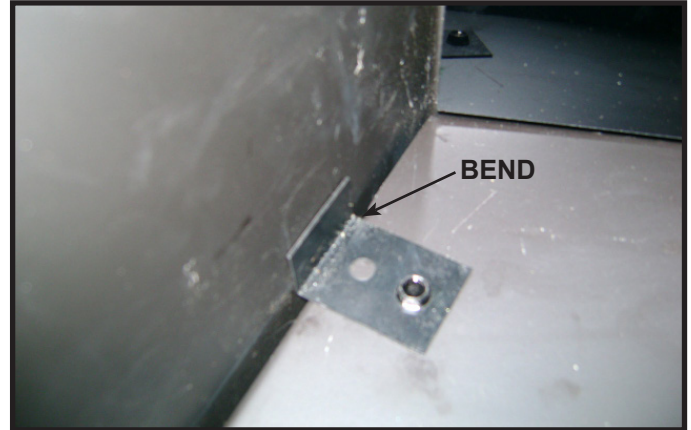


Figure 2. Glass Tab Screw Location



Figure 3. Glass Tab Screw Location

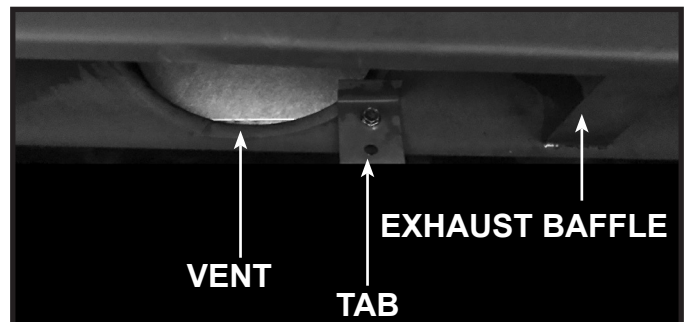


Figure 4. Glass Tab Installation Location

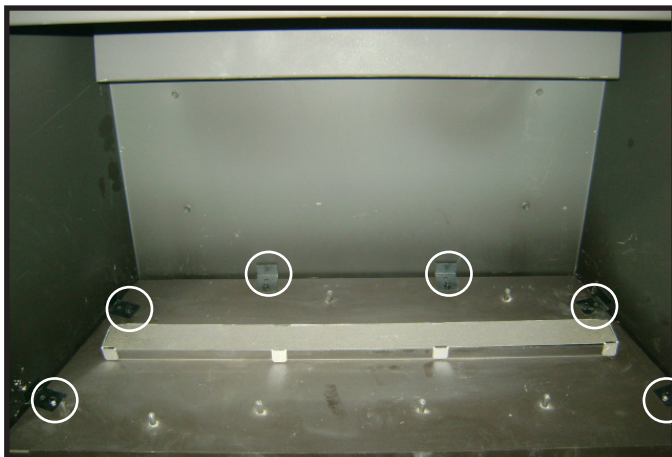


Figure 1. Install Glass Tabs

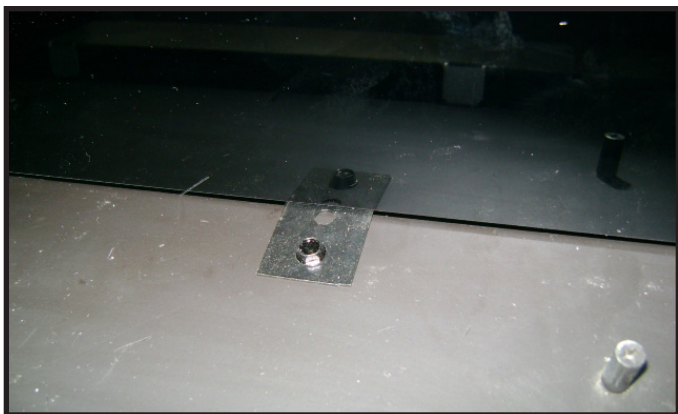


Figure 5. Glass Refractory Panel Resting on Glass Tab



Figure 8. Side Panel Positioned Between Firebox and Glass Baffle



Figure 6. Back Panel Installed.

3. Install the left or right piece of glass refractory, one at a time, by sliding the panel between the firebox and the glass baffle. Install with the smooth side facing outward. See Figure 7 and Figure 8.

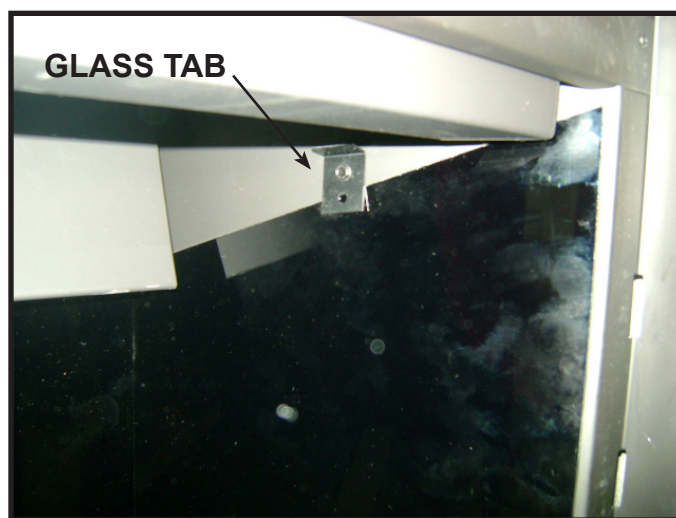


Figure 9. Right Panel Secured With Glass Tab

4. A glass tab is used to adhere the left and right panels to the firebox. Use the supplied self-tapping screws to fasten the tab to the firebox. See Figure 9.

Repeat steps 3 and 4 to install the remaining side panel.



Figure 7. Right Side Panel Installed.

Please contact your Hearth & Home Technologies dealer with any questions or concerns.
For the location of your nearest Hearth & Home Technologies dealer, please visit www.hearthnhome.com.

Hearth & Home Technologies
7571 215th Street West, Lakeville, MN 55044
www.hearthnhome.com