

## FB-INS-PILOT

### Pilot Conversion Instructions

**Models: ESCAPE-I30FB, ESCAPE-I35FB, QFI30FB, QFI35FB**

### Conversion Instructions

This conversion shall be installed by a qualified service agency.

Any damaged valve components should not be installed.

Conversion Component list:

- LP Pilot Orifice
- NG Pilot Assembly
- Grommet
- Pilot Bracket Assembly
- Air Scoop (Used for NG only)

**CAUTION: THE GAS SUPPLY SHALL BE SHUT OFF PRIOR TO DISCONNECTING THE ELECTRICAL POWER BEFORE PROCEEDING WITH THE CONVERSION.**

#### WARNING:

This Conversion kit shall be installed by a qualified service agency in accordance with the manufacturer's instructions and all applicable code and requirements of the authority having jurisdiction. If the information in these instructions is not followed exactly, a fire, explosion or production of carbon monoxide may result causing property damage, personal injury or loss of life. The qualified service agency is responsible for the proper installation of this kit. The installation is not proper and complete until the operation of the converted appliance is checked as specified in the manufacturer's instructions supplied with the kit.

### Procedure for conversion:

1. Remove panels on lower back and left side of appliance. See Figure 1 and Figure 2.
2. Switch control module to OFF mode using selector switch. See Figure 3.
3. Turn off power to module and valve by unplugging appliance from the nearby outlet.



#### ⚠ WARNING

Shock or burn risk.

- Disconnect green wire from gas valve.

Failure to disconnect green wire could result in severe burns.

4. Turn off gas to valve. Red gas shutoff knob is located on ball valve.
5. Unplug the green wire from valve. See Figure 5.
6. Remove the logs and grate assembly from the appliance.



Figure 1. Left Side Panel (Removed)

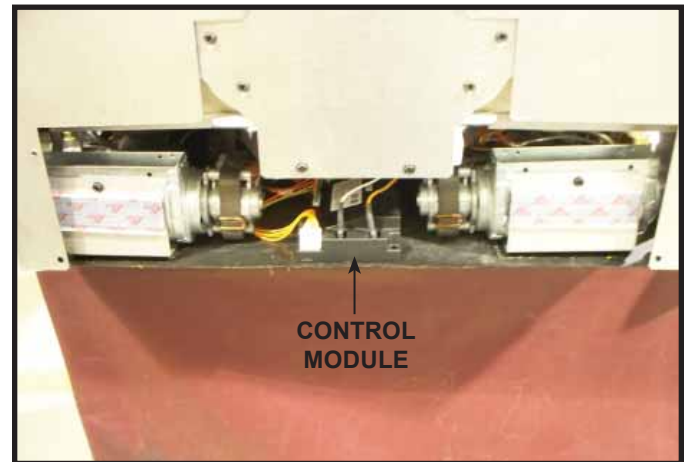


Figure 2. Lower Back Panel (Removed)

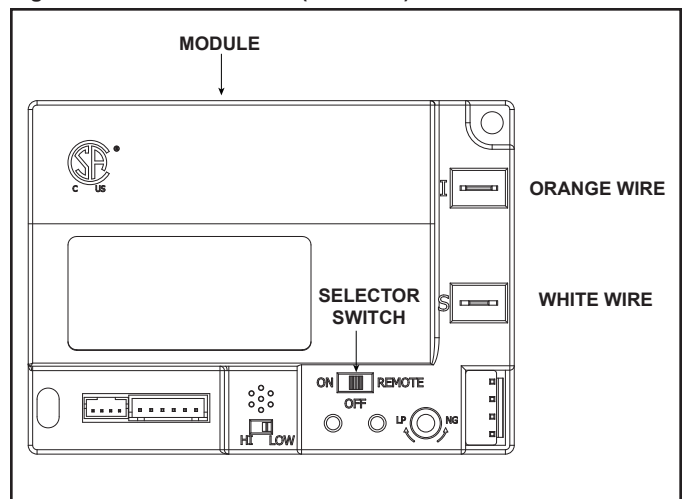


Figure 3. Module

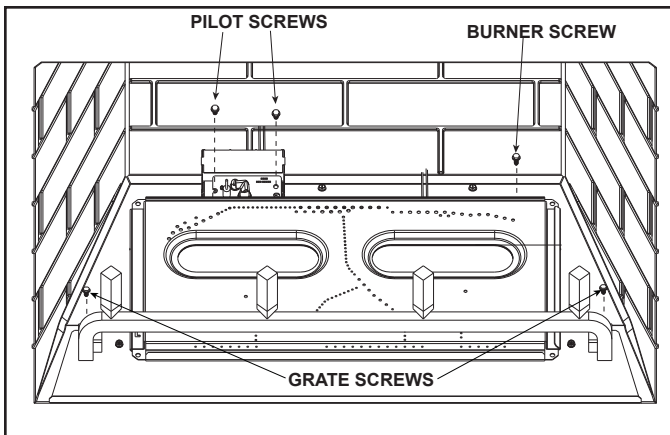


Figure 4. Removing Burner

7. Remove the burner assembly by removing one screw on the right rear corner of the burner assembly. See Figure 4. Slide burner to the right, and remove from appliance.

#### Existing Pilot Removal

8. Disconnect the orange and white wires from the module. See Figure 3.
9. Remove two screws from the valve bracket to gain access to the pilot tube. See Figure 5.
10. Unscrew the pilot tube from the valve. See Figure 5.
11. Detach the pilot from the pilot bracket by removing two screws. See Figure 6.

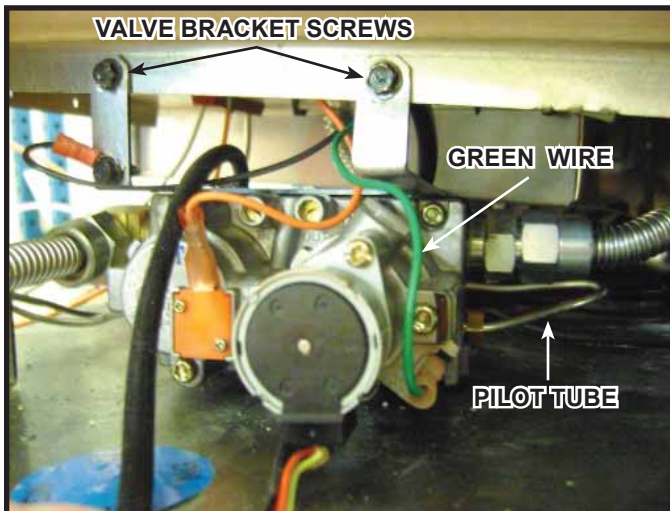


Figure 5. Gas Valve Access

12. Bend open front of pilot bracket. Remove the pilot bracket from the appliance by removing a screw from the left and the right sides of the bracket. See Figure 6.
13. **FOR LP APPLIANCES ONLY:** Unscrew the pilot tube fitting on the new pilot and replace the orifice spud with the similar one included in the conversion kit. See Figure 9.
14. Remove grommet and pilot assembly from the appliance.

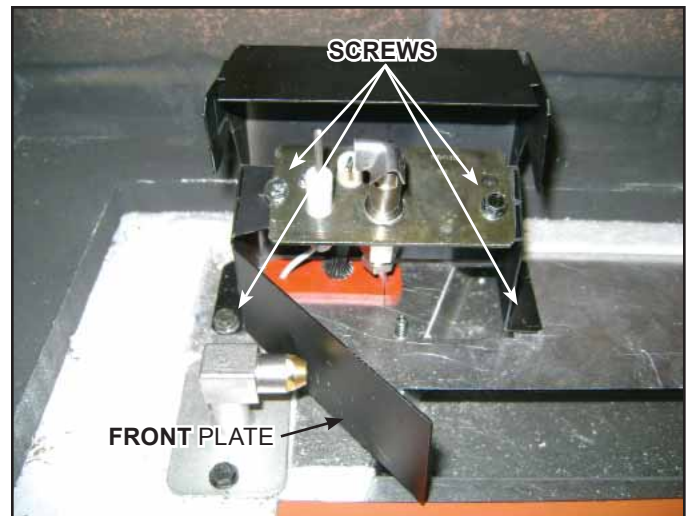


Figure 6. Pilot Burner Service

#### New Pilot Installation

15. Connect pilot tube to the valve assembly. See Figure 5. Ensure the pilot tube does not bend excessively causing a kink in the pilot tube. See Figure 7.

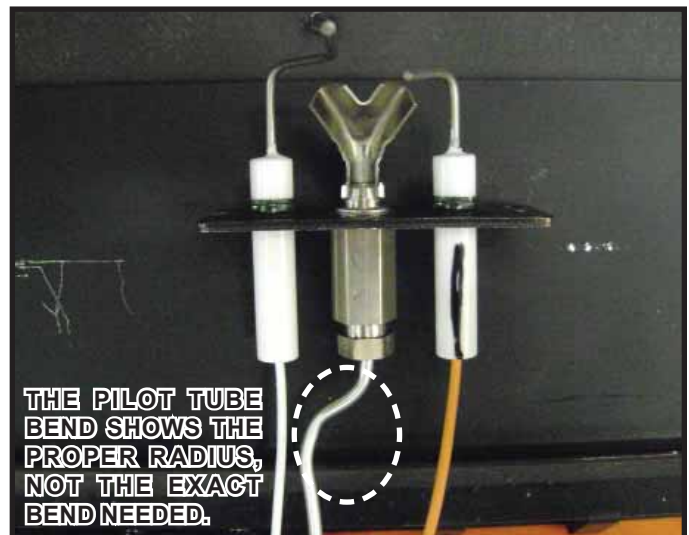


Figure 7. Proper Pilot Tube Bend Radius (No Sharp Bends)

16. Run and connect the white and orange wires of the new pilot assembly to the module located in the back of the appliance. See Figure 2 and Figure 3.
17. Install the new grommet around the white and orange wires and pilot tube.
18. The pilot tube may need to be bent before installation. See Figure 7. The grommet may not be centered with the pilot tube.

## Install New Pilot Bracket

19. Install the new bracket around the pilot assembly with two screws.

### FOR I30FB MODELS:

Remove material in back rear area of pilot bracket. See Figure 8.

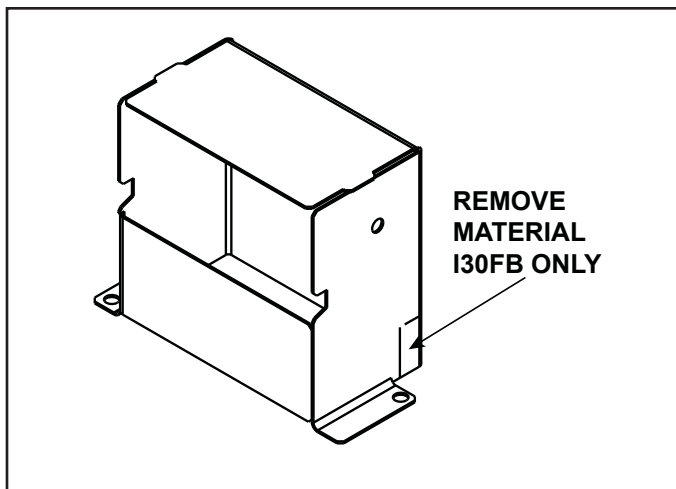


Figure 8. Side View of Pilot Bracket

20. Attach pilot to pilot bracket with two screws. See Figure 6.
21. Plug appliance back into outlet. Turn on gas to valve using red knob located on ball valve.
22. Turn on fireplace with the green wire disconnected. See Figure 5.
23. Use a commercially available, noncorrosive leak check solution to test for leaks around the pilot. Be sure to rinse off all leak check solution following testing. See Figure 9 for leak check points. Extinguish the pilot.
24. Bend the front plate closed of the pilot bracket to the closed position.

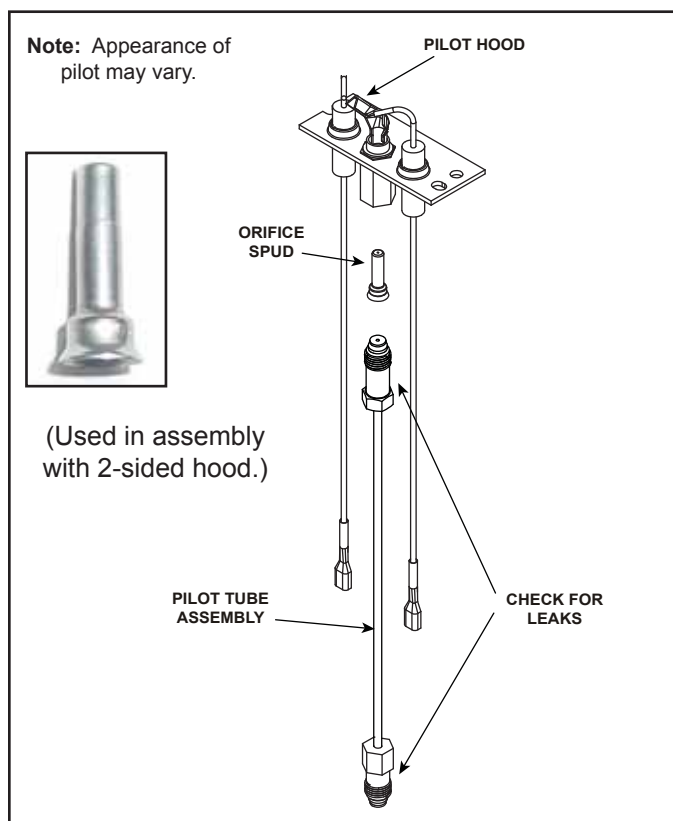


Figure 9. Pilot Orifice Installation

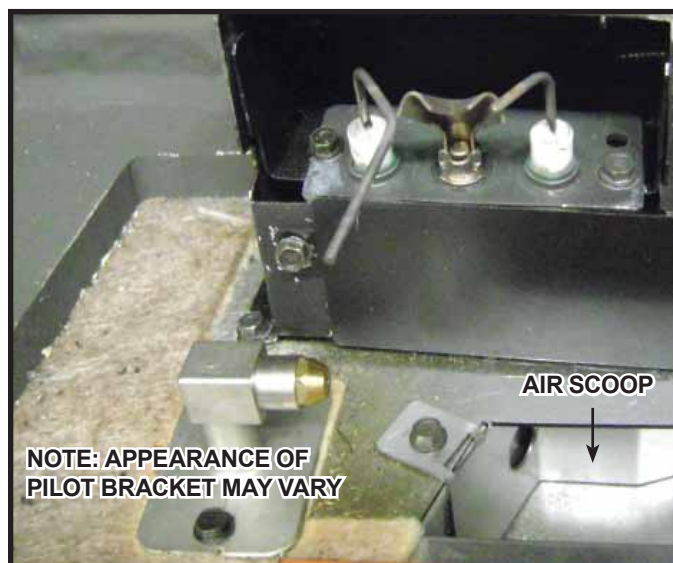


Figure 10. Air Scoop Installation

### FOR NG APPLIANCES ONLY:

25. Place the air scoop down into the opening directly to the right of the burner orifice so that the screw tab is flush to the back corner of the fresh air inlet. See Figure 10 and Figure 11.
26. Secure the air scoop in place using a self-tapping screw. See Figure 10 and Figure 11.

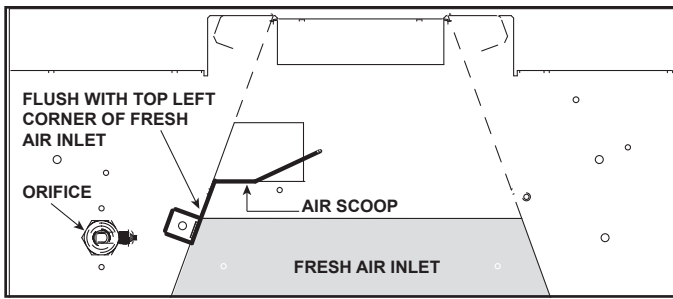


Figure 11. Air Scoop Location (Top View)

27. See chart below for air shutter settings. More information regarding air shutter settings is available in the appliance installation manual.

#### Air Shutter Settings

NG	LP
1/4 in.	Full Open

28. Reinstall grate assembly. See Figure 4.

**⚠ WARNING**

Explosion Risk

- Pilot must be reattached to pilot bracket.
- Delayed ignition or an explosion may occur if the pilot is not attached to the pilot bracket.

29. Reinstall logs by following log placement instructions.

30. Reattach the green wire. See Figure 5.

31. Turn the fireplace "On" and use a commercially available, non-corrosive leak check solution to test for leaks around the pilot tube/fitting and valve. Be sure to rinse off all leak check solution following testing and prior to placing the appliance into operation. Turn the fireplace "Off" to extinguish pilot and main burner flame.

32. Reinstall the glass and the doors.

33. Reattach panels removed in Step 1.

#### Verify the performance of the ignition system.

1. Turn fireplace on. Verify pilot sparks, pilot lights, pilot stops sparking, and the main burner turns "ON"
2. Turn fireplace OFF. Verify that the both the pilot and burner turn "OFF".
3. Repeat Step 1 above.
4. With burner "ON", remove green wire connected to valve. The main burner should shut "OFF".
5. Turn fireplace OFF. Reattach green wire to valve. Turn fireplace ON. Pilot and main burner should both ignite.
6. With the main burner "ON", remove orange wire connected to the valve. The pilot and burner should go out, and the pilot will start to spark.
7. Turn fireplace "OFF" and reattach orange wire to the valve.

Please contact your Hearth & Home Technologies dealer with any questions or concerns.  
For the location of your nearest Hearth & Home Technologies dealer, please visit [www.hearthnhome.com](http://www.hearthnhome.com).

Hearth & Home Technologies Inc.  
7571 215th Street West, Lakeville, MN 55044  
[www.hearthnhome.com](http://www.hearthnhome.com)