

SRV-ESC42ST-IP - Installation Instructions -

Conversion Instructions

This conversion shall be installed by a qualified service agency.

Any damaged valve or components should not be installed. If a valve has been dropped or appears to have been modified, the valve should not be installed.

Kit Component list:

- Valve
- Wire Harness
- Power Supply
- IPI Plus Module
- Aux 300 Module
- RC300 Transmitter

CAUTION: THE GAS SUPPLY SHALL BE SHUT OFF PRIOR TO DISCONNECTING THE ELECTRICAL POWER BEFORE PROCEEDING WITH THE CONVERSION.

WARNING:

This Showroom kit shall be installed by a qualified service agency in accordance with the manufacturer's instructions and all applicable code and requirements of the authority having jurisdiction. If the information in these instructions is not followed exactly, a fire, explosion or production of carbon monoxide may result causing property damage, personal injury or loss of life. The qualified service agency is responsible for the proper installation of this kit. The installation is not proper and complete until the operation of the converted appliance is checked as specified in the manufacturer's instructions supplied with the kit.

NOTICE: Selector Switch on module **MUST** be in **OFF** mode before valve regulator lead can be connected or disconnected from valve.

INSTALLATION

1. Turn off gas to valve at ball valve. See Figure 1.
2. Turn off power to module and valve.
3. Remove glass to access valve and controls.

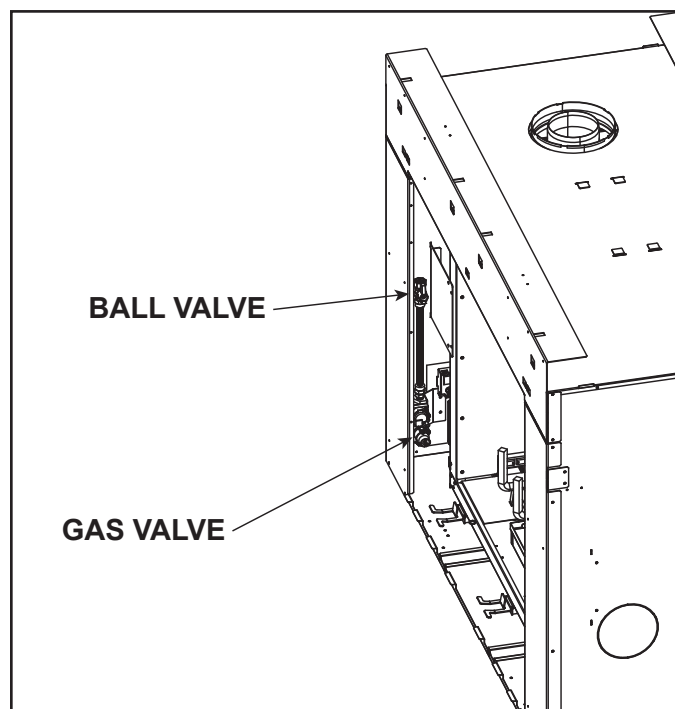


Figure 1. Location of Gas Valve and Ball Valve

4. Refer to Figure 2 and disconnect the components in this order:

1. WSK300 module power supply at junction box
2. Green wire at valve
3. Orange wire at valve
4. Orange pilot wire at green IPI module
5. White pilot wire at green IPI module
6. Ground clip (wire may be cut if inaccessible)
7. Red, white, and green wire at WSK300 module
8. Light harness at WSK300 module

5. Disconnect valve: Loosen the 3/4 inch compression fittings located on the inlet and outlet sides of the gas valve. Loosen 7/16 inch compression fitting of the pilot tube at the valve.

6. Remove and discard WSK300 module, green IPI module, valve, keypad, Hi/Lo solenoid, battery pack.

7. Replace gas valve with the valve provided in the kit.

8. Refer to Figure 3 and reconnect the components in this order:

1. Light harness to AUX1 of AUX300 module
2. AUX300 module harness to black IPI Plus module
3. Wire harness to black IPI Plus module
4. Green wire of wire harness to new valve
5. Orange wire of wire harness to new valve
6. Valve stepper motor harness to black IPI Plus module
7. Orange pilot wire to black IPI Plus module
8. White pilot wire to black IPI Plus module
9. Power supply to black IPI Plus module
10. Power supply to fireplace junction box

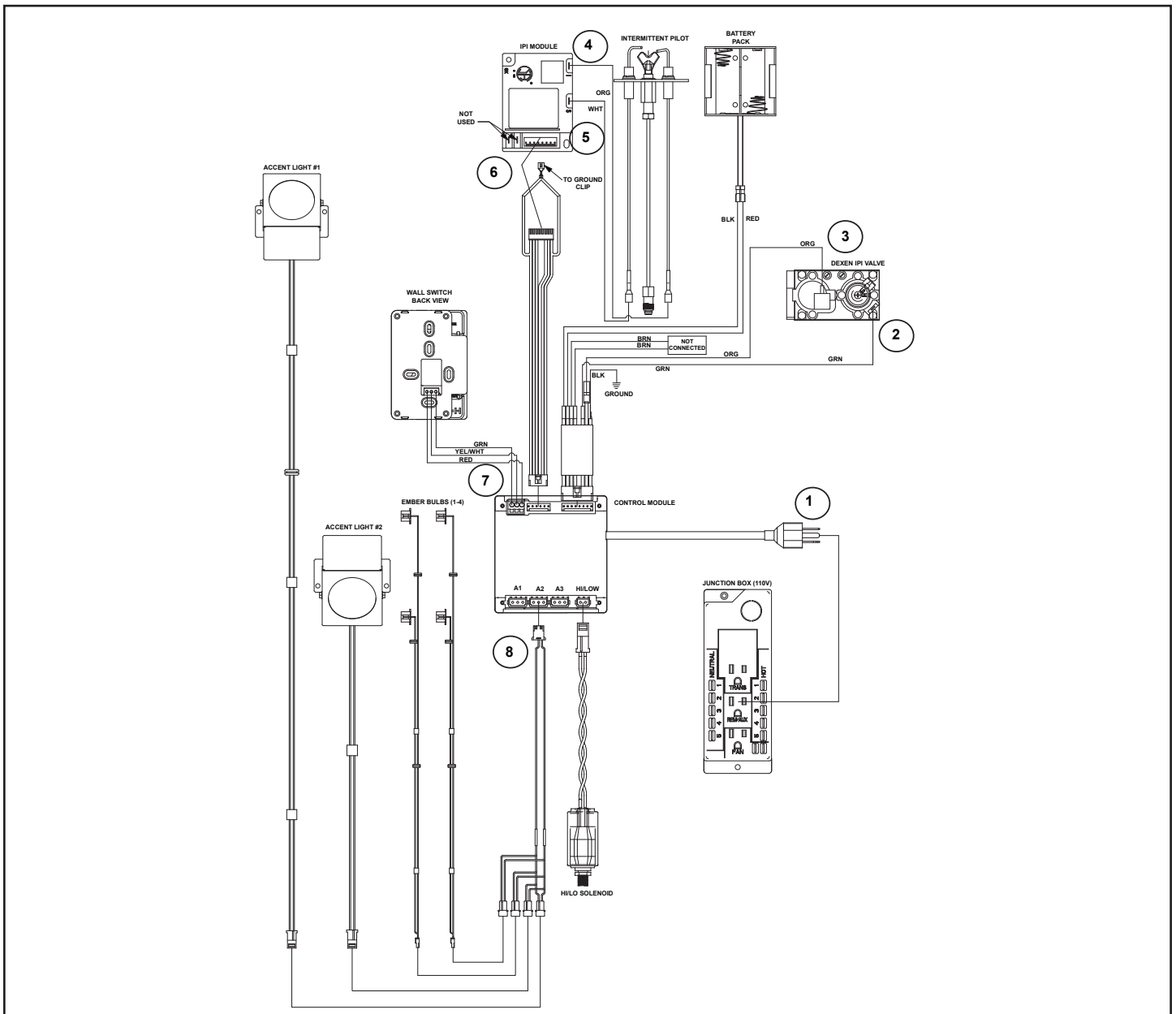


Figure 2. Disconnect Components

9. Using a small screwdriver, carefully adjust the setting on the module to the appropriate gas type. Turn clockwise for LP. Turn counterclockwise for NG. Turn carefully. Excessive force may cause stripping or damage to module. See Figure 4.
10. Turn on gas and power to appliance.
11. Turn on appliance. Turn IPI module selector switch to ON.
12. Use a commercially available, non-corrosive leak check solution to test for leaks around the fittings of the valve.
13. Turn off appliance. Turn IPI module selector switch to REMOTE.
14. Follow included RC300 instructions to program transmitter.

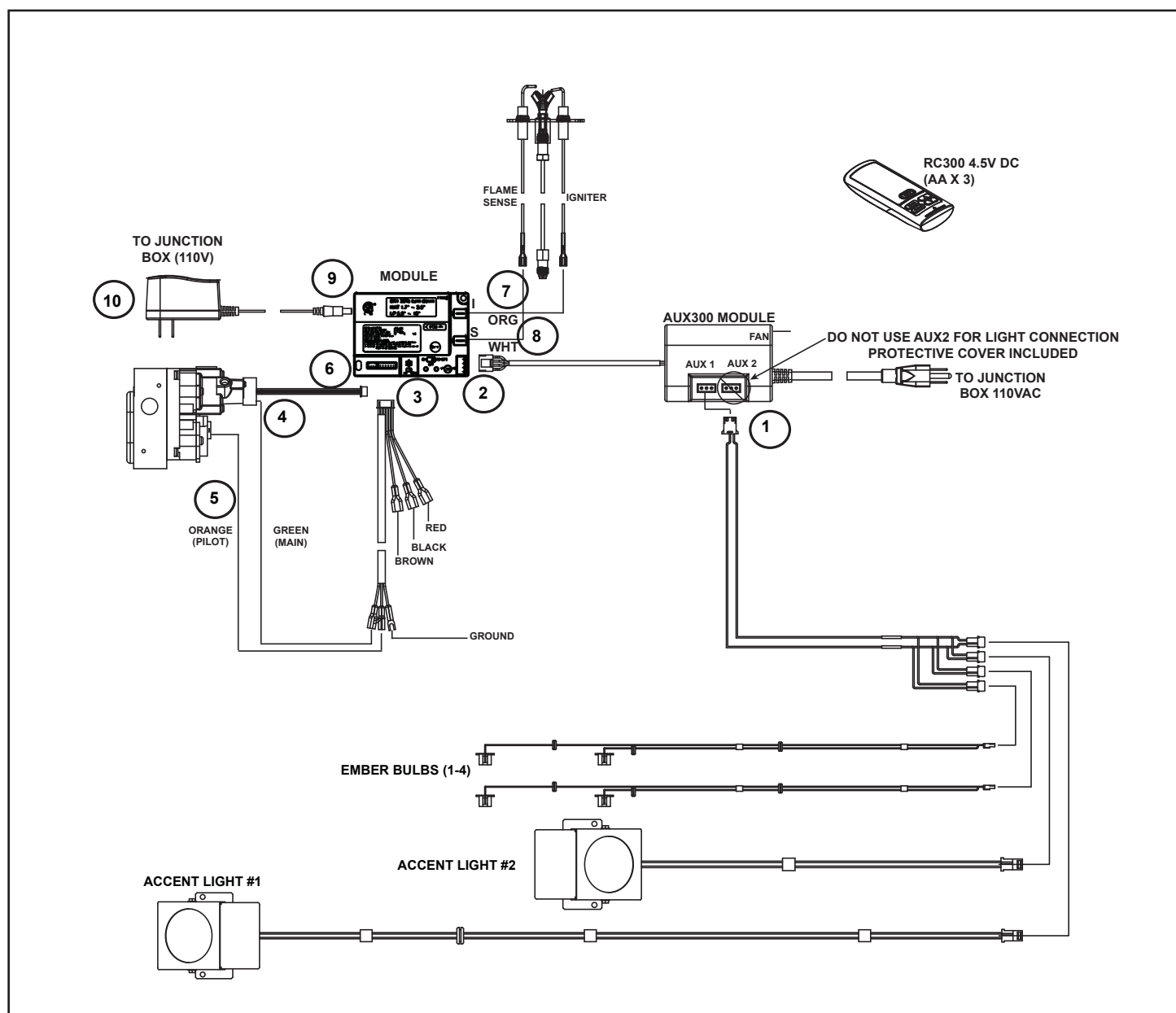


Figure 3. Reconnect Components

Control Module Operation

1. The control module has an ON/OFF/REMOTE selector switch that must be set. See Figure 4.

OFF Position: Appliance will ignore all power inputs and will not respond to any commands from a wall switch or remote. The unit should be in the OFF position during installation, service, battery installation, fuel conversion, and in the event that the control goes into LOCK-OUT mode as a result of an error code.

ON Position: Appliance will ignite and run continuously in the HI flame setting, with no adjustment in flame output. This mode of operation is primarily used for initial installation or power outage operation with battery backup.

REMOTE Position: Appliance will initiate commands from an optional wired wall switch and/or the wireless remote (RC300).

2. If using a wired wall switch with the module in REMOTE mode, the flame output can be adjusted with the HI/LO selector switch on the module. See Figure 4. Note that the flame HI/LO selector switch will become inactive once an optional remote control (RC200/RC300) is programmed to the control module. Note that the control module will always ignite the fireplace on HI and remain so for the initial 10 seconds of operation. If the HI/LO is switched to the LO position, the flame output will automatically drop to the lowest setting after the flame has been established for 10 sec. After this 10 second period, the flame can be adjusted from HI to LO with the switch.
3. The control module has safety feature that automatically shuts down the fireplace after 9 hours of continuous operation without receiving a command from the RC300 remote.
4. If you intend to use both an optional wired wall switch and the RC300 remote control to operate your fireplace, the wall switch will override any commands given by the remote.
5. The module has the capability to recognize potential malfunctions. If these occur, it will fail to ignite and/or respond to a command to ignite via the wall switch and/or remote. In this case, the module may have gone into LOCK-OUT mode. In this state, it will emit a RED/GREEN LED error code. To reset the error code, switch the selector to OFF, and then back to REMOTE or ON. If the ignition command again fails, the module will emit an LED error code, prior to going back into LOCK-OUT mode. Contact your dealer for service if this occurs.

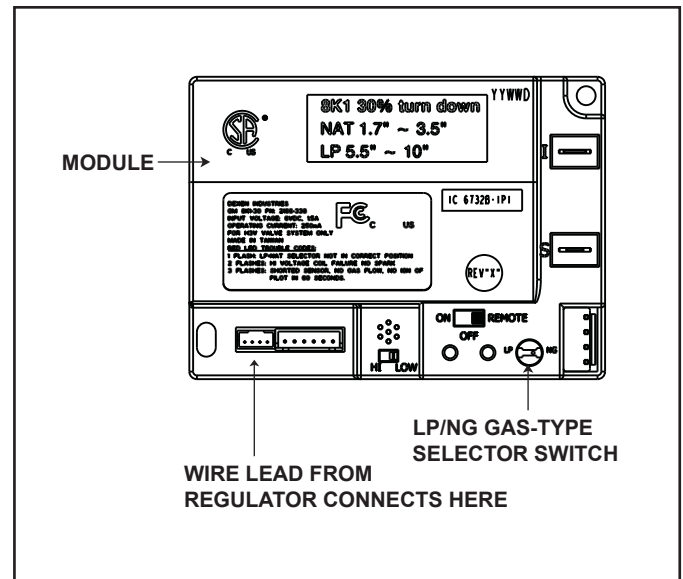


Figure 4. Control Module

Heat & Glo, a brand of Hearth & Home Technologies
 7571 215th Street West, Lakeville, MN 55044
www.heatnglo.com

Please contact your Heat & Glo dealer with any questions or concerns.
 For the location of your nearest Heat & Glo dealer, please visit www.heatnglo.com.