

SOHO24B SHOWROOM UPGRADE KIT

MODEL: Soho24 to Soho24B

- Installation Instructions -

HEAT & GLO[®]

No one builds a better fire



WARNING

Fire Risk

- This upgrade kit is intended to be used only to update an existing showroom display. It may NOT be used to update units in the field.
- Excessive Header temperatures may result in a fire.

Note: A complete SOHO24B upgrade should include a new front. Please use one of the following fronts: STUDIO-CE-BK-M, STUDIO-CE-BN-M, STUDIO-CE-BN-G. This kit does not include a front.

Tools Required:

- 1/4 inch nut driver
- Small Phillips Screwdriver
- Tin Snips
- Crescent Wrench



Figure 1.

Parts List

1. Valve/Burner Assembly
2. Reflective Firebox Liner
3. Reflective Panel Retainer
4. Stone Pan
5. Inner Pilot Cover (Attached)
6. Outer Pilot Cover (Attached)
7. WSK-100
8. Onyx Stone 1-6 lb. bag

1. Shut off gas supply and electrical power to the existing SOHO24. Disconnect gas ball valve from the gas line. Disconnect two transformers from the unit's junction box. Remove glass door and log set. Discard logs. Save all screws for reassembly of the new interior.
2. Disconnect the four-wire wall switch from the circuit board in the valve cavity. See Figure 2.

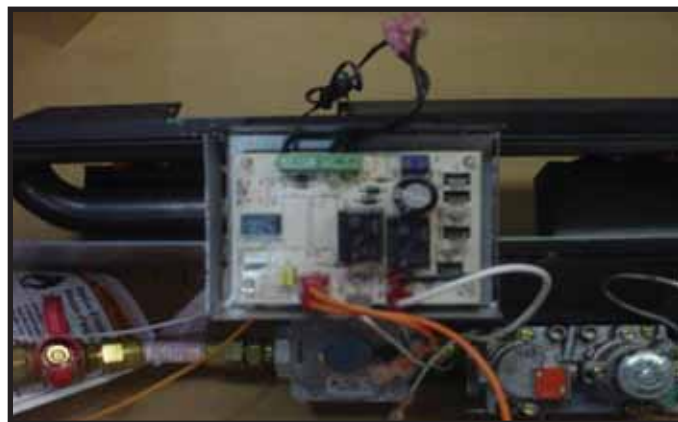


Figure 2.

3. Remove refractory retainer piece at the top of the firebox by removing 1/4 inch screws from either side of the flue opening. Discard. See Figure 3.
4. Remove refractory panels and discard.



Figure 3.

5. Remove basepan by removing 1/4 inch screws in front corner of the firebox. See Figure 4. Discard Pan.



Figure 4.

6. Remove ten 1/4" hex screws around the perimeter of the firebox base, then remove the entire valve/burner assembly by lifting up and out (assembly includes valve plate, burner, valve, control module, and wiring). Discard.
7. Using a tin snips, clip the front corners of the firebox at a 45 degree angle. See Figure 5. This will allow the Reflective Firebox Liner to fit into the firebox.



Figure 5.

8. Drop the new valve/burner assembly into the base of the firebox and replace the ten 1/4" hex screws around the perimeter of the valve plate.
9. Insert the Reflective Firebox Liner into the firebox by tilting and sliding the front bottom in first then rotating the top into the firebox so it is flush with the back and side walls. Carefully peel the protective coating off of the Firebox Liner.
10. Install the Reflective Panel Retainer by inserting it into the top of the firebox and reinstalling the two 1/4" hex screws on either side of the flue opening. Make sure that the back lip of the retainer is pressed firmly against the top return lip of the reflective panel. See Figure 6.



Figure 6.

11. Place the stone pan assembly on the burner and attach with two hex head screws making sure that the screws go through the holes on the pilot bracket and into the burner. See Figure 7.



Figure 7.

12. Reconnect gas supply to ball valve. Plug transformer into the junction box.
13. Install WSK100-HNG wall switch using the wall switch wire disconnected from old switch and following the instructions included with the WSK100.
14. Check the gas pressure for proper setting. Check for gas leaks at all connections, check for proper pilot and burner operation, etc, as in normal fireplace installations.
15. Proper stone placement is important. Follow the Stone Placement instructions included with this kit carefully.
16. Verify proper pilot and burner operation after stones are placed.
17. Replace glass and attach new front.

Note: If appliance is vented more than 7 feet vertically, the exhaust restrictor should be used. If vertical venting is 7-15 feet, the break away portion of the exhaust restrictor **MUST** be removed. If vertical venting exceeds 15 feet, the break away portion of the exhaust restrictor should be left in place. See Figure 8.

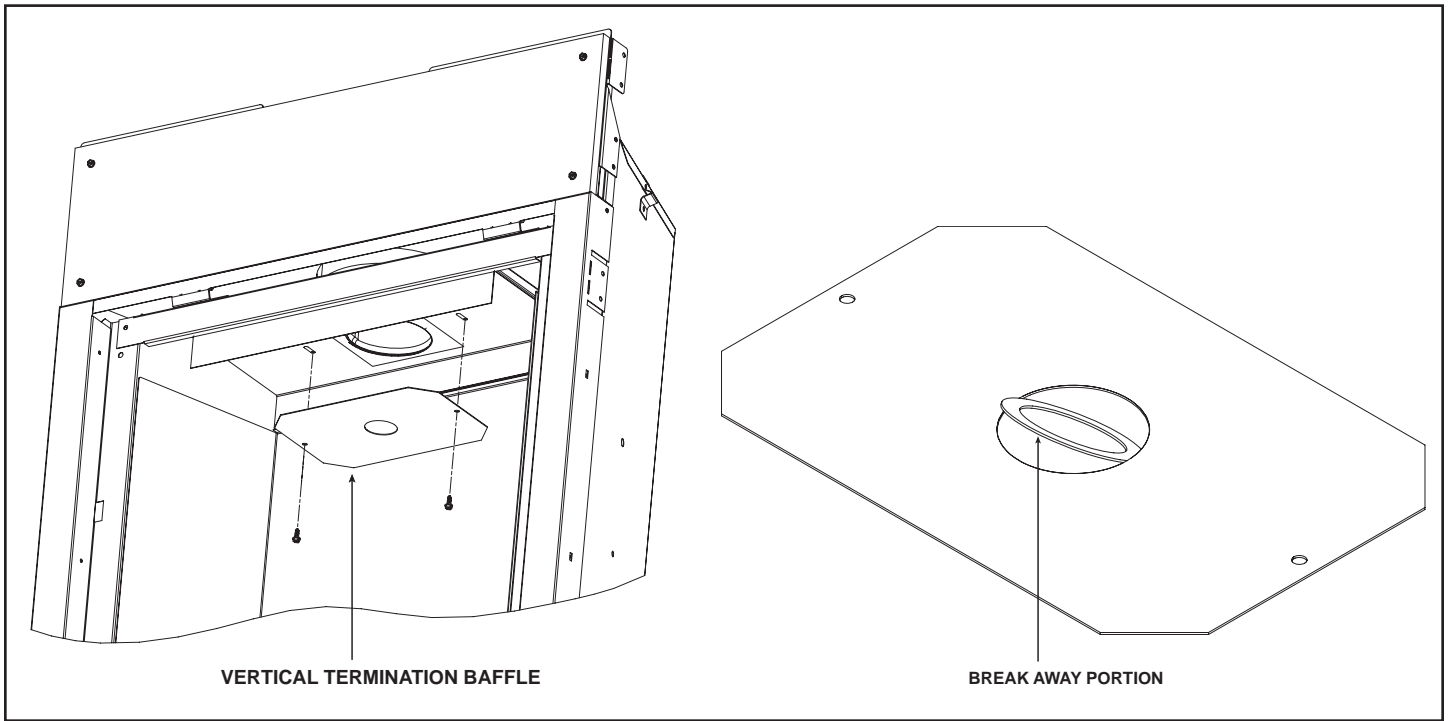


Figure 8.