

# Galleria Doors

## Cerona-36 and Cerona-42

# HEAT & GLO™

No one builds a better fire

## Installation & Operating Instructions



Leave this manual with party responsible for use and operation.

### ⚠ WARNING



**HOT! DO NOT TOUCH.  
SEVERE BURNS MAY RESULT.  
CLOTHING IGNITION MAY RESULT.**



Glass and other surfaces are hot during operation and cool down.

- Keep children away.
- CAREFULLY SUPERVISE children in same room as appliance.
- Alert children and adults to hazards of high temperatures.
- Do NOT operate with protective barriers open or removed.
- The doors must remain closed if children will be present during the operation of the fireplace.
- The doors may be made operable per these instructions. This may be done only upon request of a person responsible for the use and operation of the fireplace.
- The doors can be returned to the locked position following these instructions.
- Keep clothing, furniture, draperies and other combustibles away.
- When the doors are in an operable state, the door-locking screw must be retained in the threaded nut behind doors.

**WARNING! Risk of Fire!** Combustible materials **MUST NOT** overlap or be placed under a surround.

**CAUTION! Do not install damaged components.**

1. To lock the doors shut, insert the black 10-24 Phillips head bolt through the small notches by the handles. Tighten the bolt into the threaded insert mounted between the spring clips on the lower hinge bracket. See Figure 1.

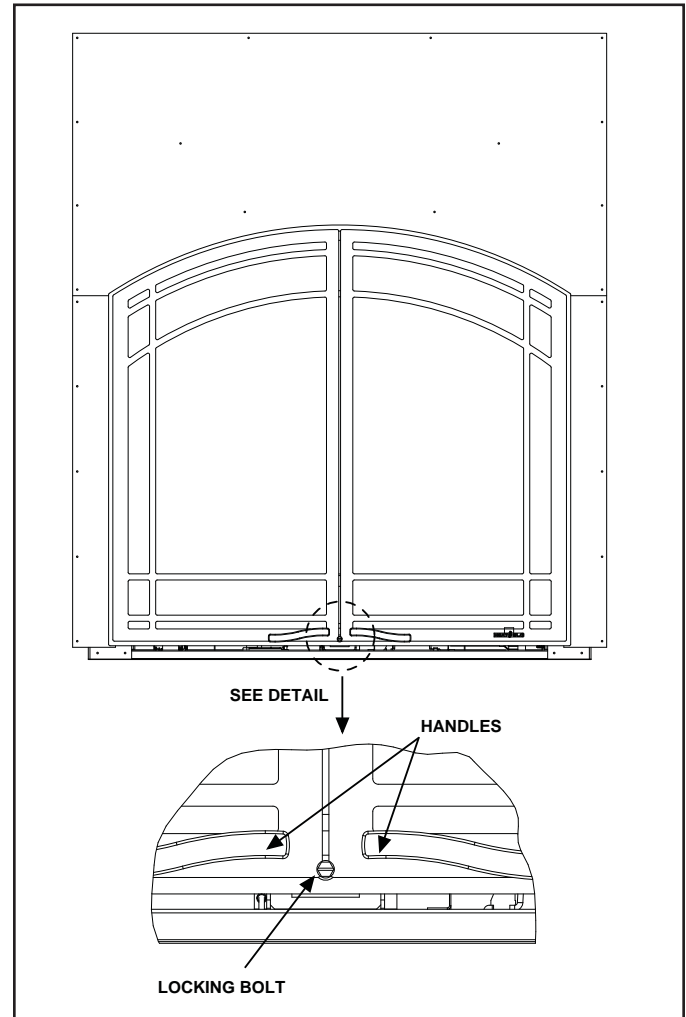


Figure 1.

2. To unlock the doors, remove the bolt and open the doors. Reinstall the bolt into threaded insert from the back side so the bolt doesn't interfere with the door.

### Cleaning Instructions for Doors

Use a microfiber cloth and Windex® Original Glass Cleaner or 03M003 Stove Bright® Glass Cleaner to clean the door immediately after installation to remove acids deposited by the installer or technician. Spray the cleaner onto the microfiber cloth and carefully wipe the entire surface. The door should be cleaned in this manner annually by the homeowner to remove fingerprints or other contaminants. Once oxidation of the paint pigment has occurred, cleaning will not restore the original color.

3. See Figure 2 for assembly details on Cerona-36 and Figure 3 for assembly details on Cerona-42.

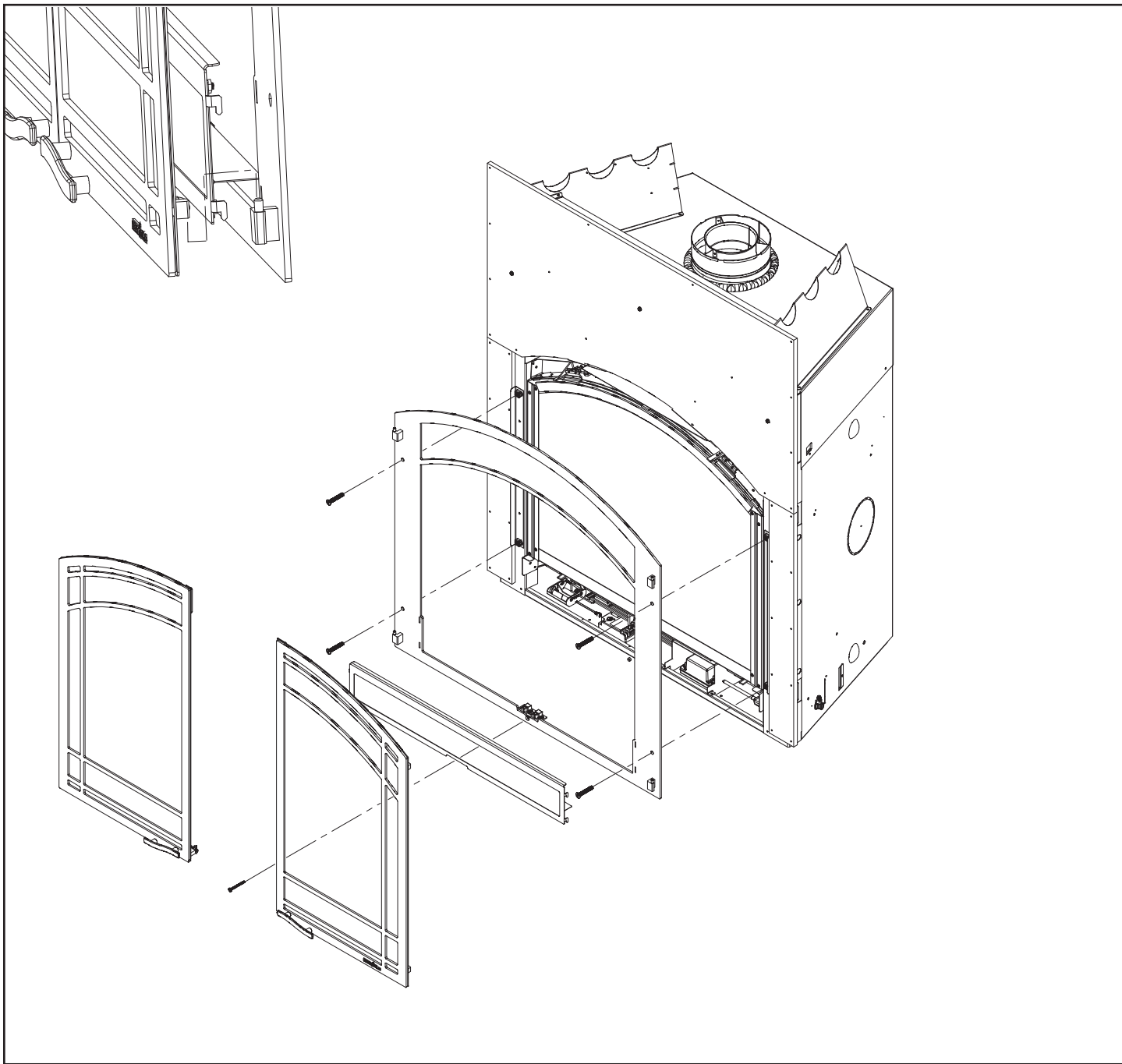


Figure 2. Cerona-36

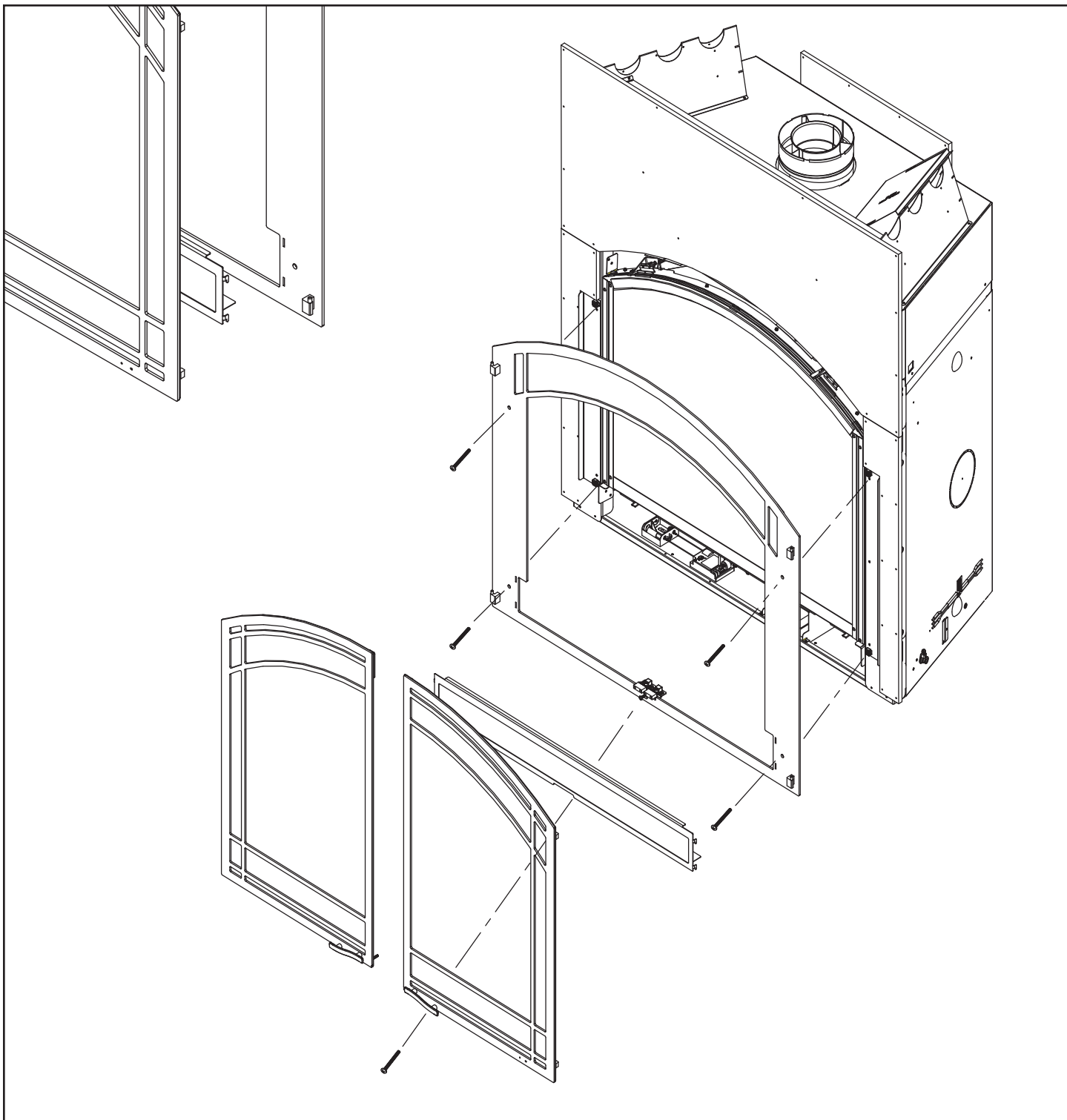


Figure 3. Cerona-42

Please contact your Heat & Glo dealer with any questions or concerns.

For the location of your nearest Heat & Glo dealer, please visit [www.heatnglo.com](http://www.heatnglo.com).

Heat & Glo, a brand of Hearth & Home Technologies Inc.  
7571 215th Street West, Lakeville, MN 55044  
[www.heatnglo.com](http://www.heatnglo.com)