

SRV- PACK

- General Instructions -

Included in the SRV-PACK are:

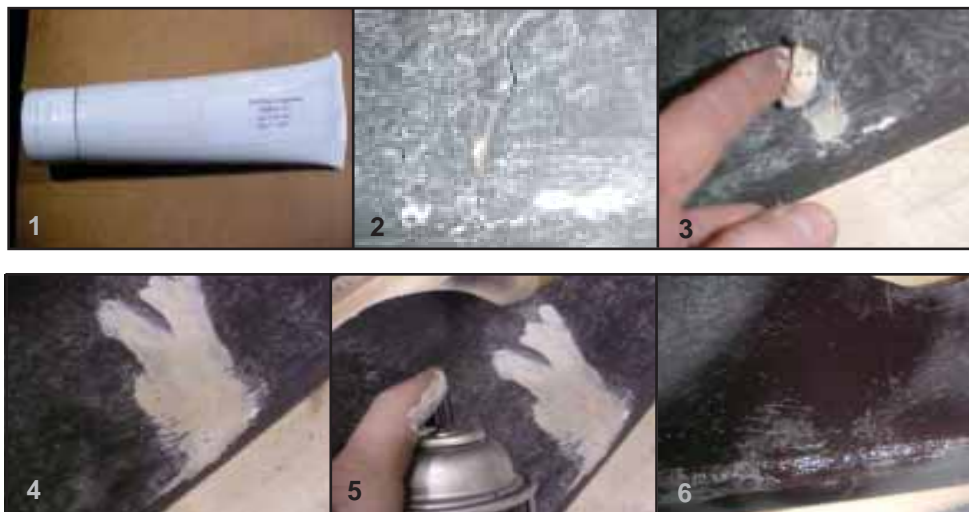
- 1 - Can each of Bravo Tan, Burnt Black and Highlight Gray
- 1 - Tube of patch material
- 1 - Mortar trace template



The colors in the can are the primary colors used in production for the color scheme of your unit or refractory.

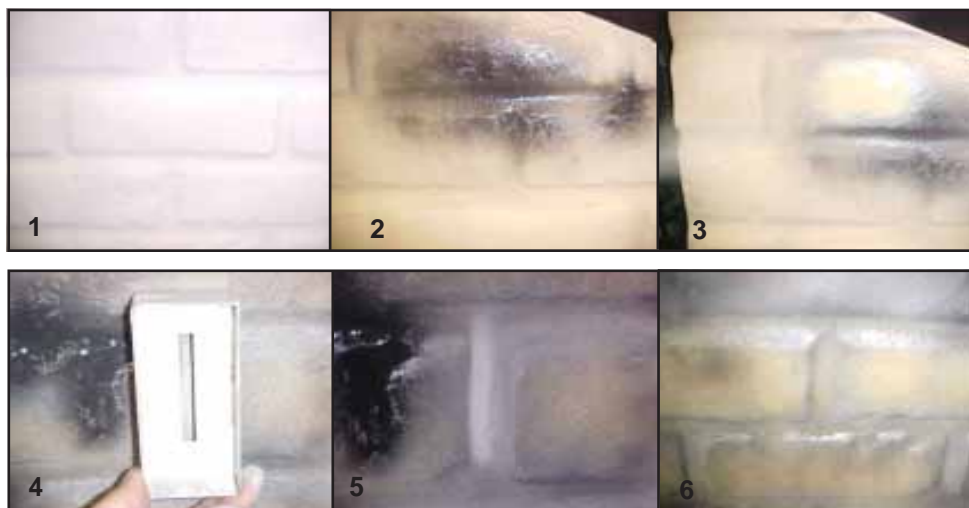
To patch a void, chip or crack:

- 1. Obtain tube of patch material.
- 2. Crack, void or chip to patch.
- 3. Smudge the patch material into the void, chip or crack.
- 4. Patch will dry within a few minutes.
- 5. Paint area with correct touch-up color.
- 6. Let paint dry for a couple minutes before handling.



To touch-up an aesthetic blemish or defect:

- 1. Refractory and boxes are paintable.
- 2. Burnt black touch-up can be used to add a "soot" look to the refractory or to touch-up black areas.
- 3. Bravo tan can be used to touch-up blemishes or lighten the refractory for a cleaner look.
- 4. To touch-up mortar trace lines, use the gray touch-up with the grout line template.
- 5. The grout template and gray paint are used to touch up mortar trace lines after using other touch-up paints may have made the lines disappear.
- 6. For more precision touch up, cover the surrounding areas with paper to prevent overspray.



Note: It is highly recommended to practice on a piece of cardboard or paper before attempting to touch-up refractory or the firebox.

Please contact your Hearth & Home Technologies dealer with any questions or concerns.

For the location of your nearest
Hearth & Home Technologies dealer,
please visit www.fireside.com.

Hearth & Home Technologies Inc.
7571 215th Street West, Lakeville, MN 55044
www.fireside.com