



DIAL CONTROL PELLET STOVES

Recommended Repair Procedures

Alarm Code	Repair Procedure
1 Flash: Empty Hopper	Page 5
2 Flashes: Exhaust Probe Fail	Page 8
3 Flashes: Ambient Probe Alarm	Page 7
4 Flashes: Missed Ignition	Page 6
8 Flashes: Exhaust Over Temperature	Page 3

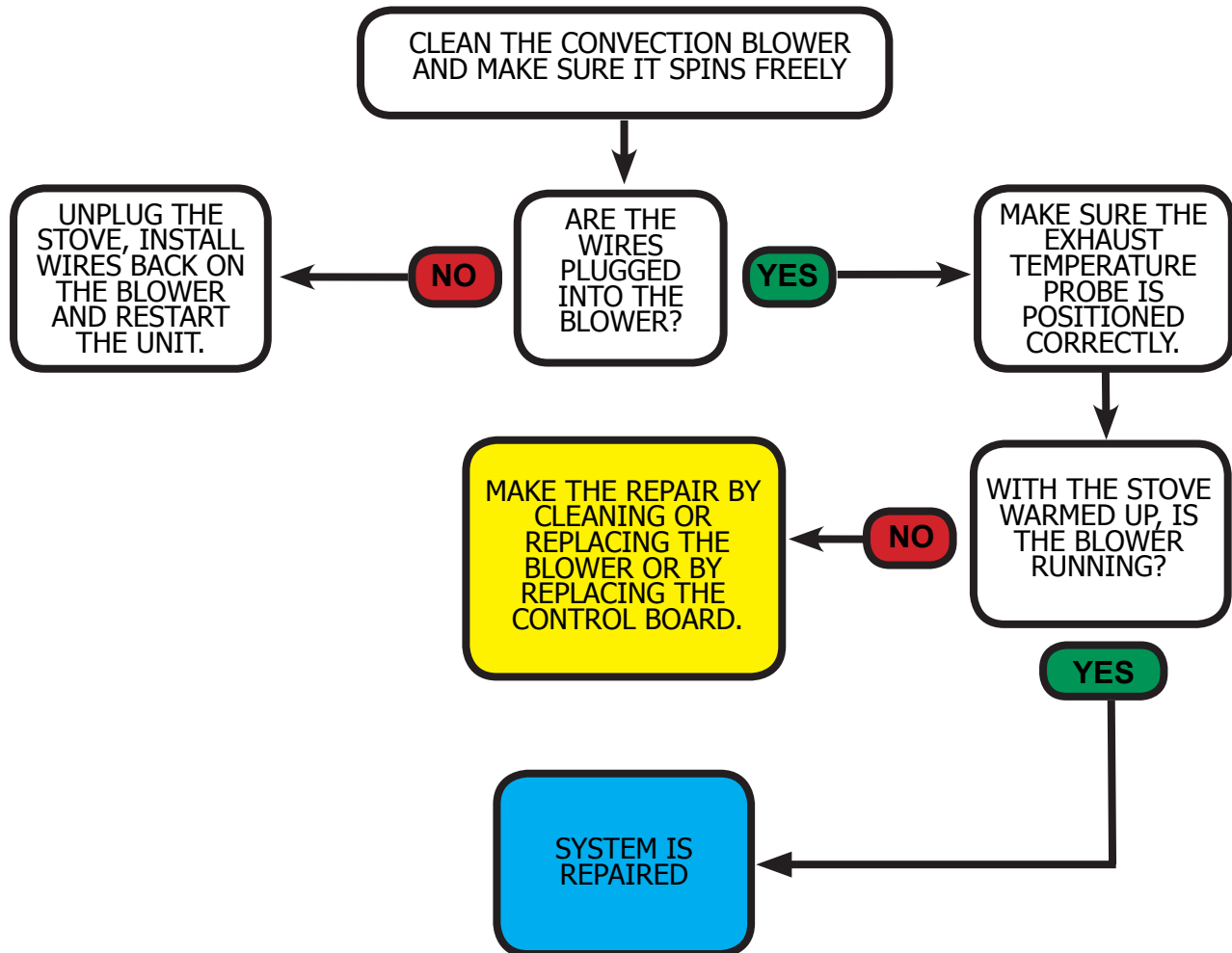
Symptom	Repair Procedure
Not Feeding Pellets	Page 11
Not Lighting the Fuel	Page 9
Lazy or Sooty Flames	Page 4
No Power	Page 12
Convection Blower Not Coming On	Page 2
Exhaust Blower Not Coming On	Page 10
Unit is Not Sensing Temperature in the Room	Page 7

Refer to the Owner’s Manual for information on making adjustments to the unit or for the procedures for replacing parts.

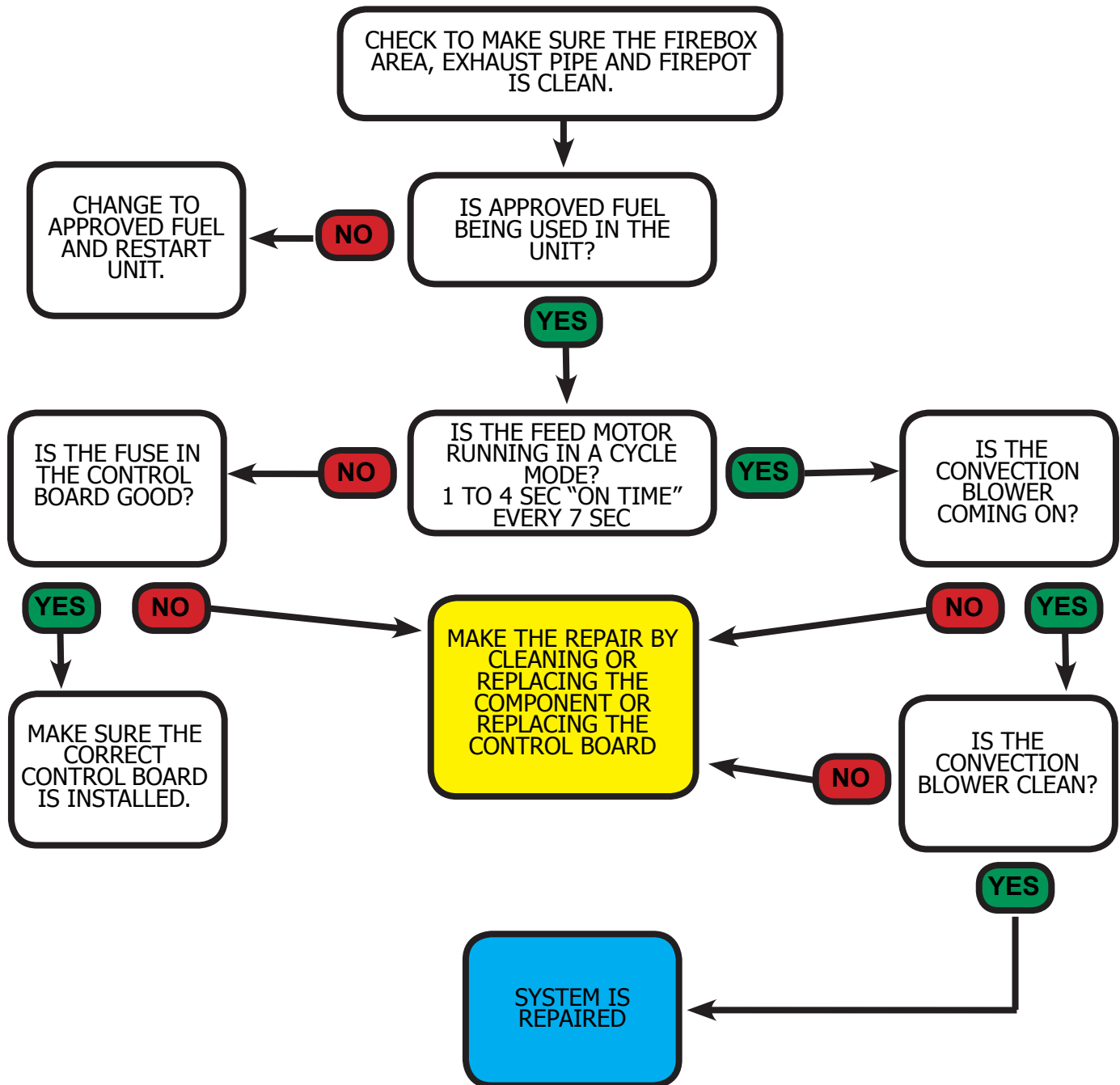
WARNING!
ALWAYS UNPLUG THE STOVE BEFORE CLEANING, REPLACING COMPONENTS, RESETTING SNAP DISCS AND CHECKING WIRE CONNECTIONS.

Rev. 10/14

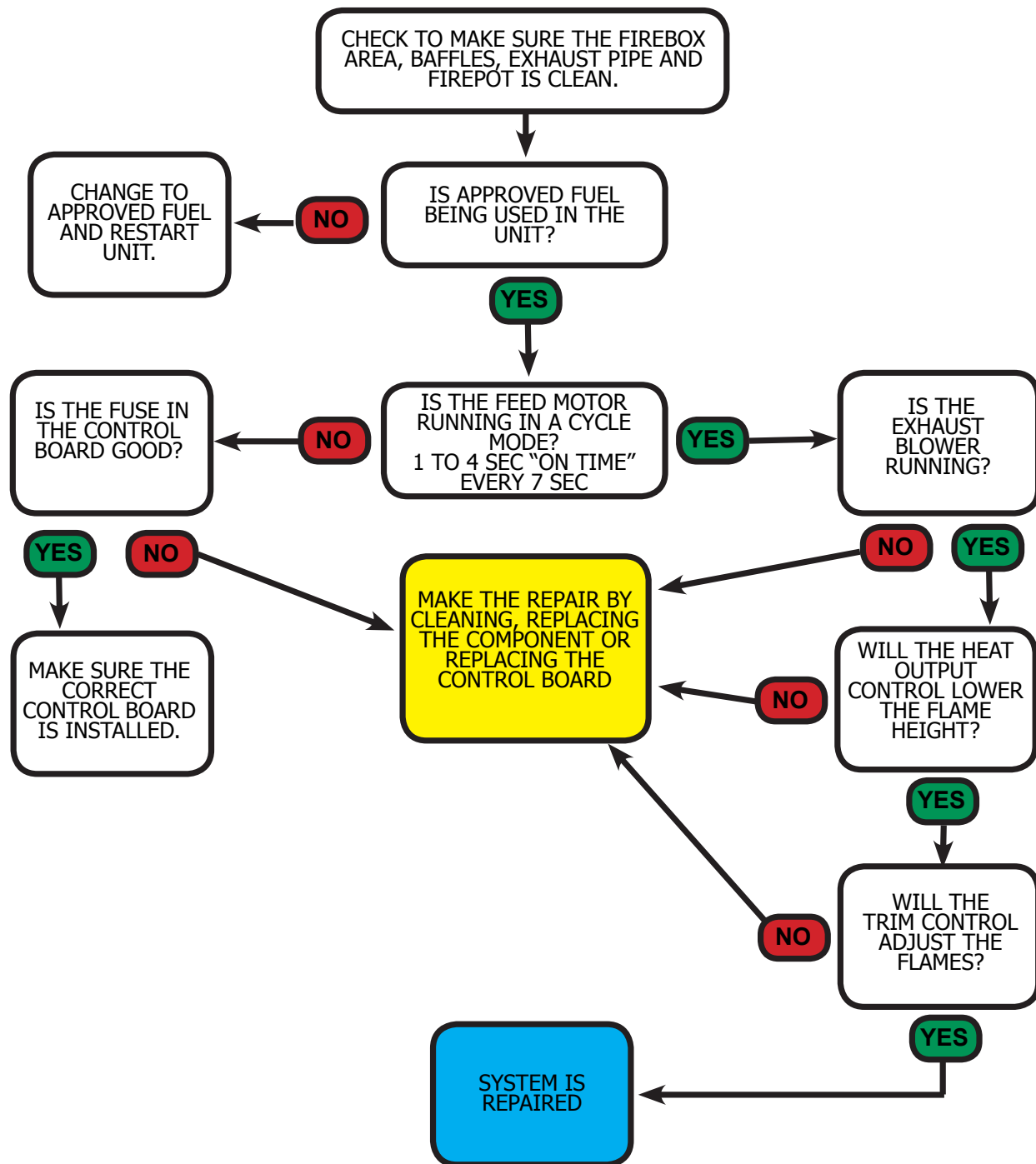
Convection Blower Troubleshooting



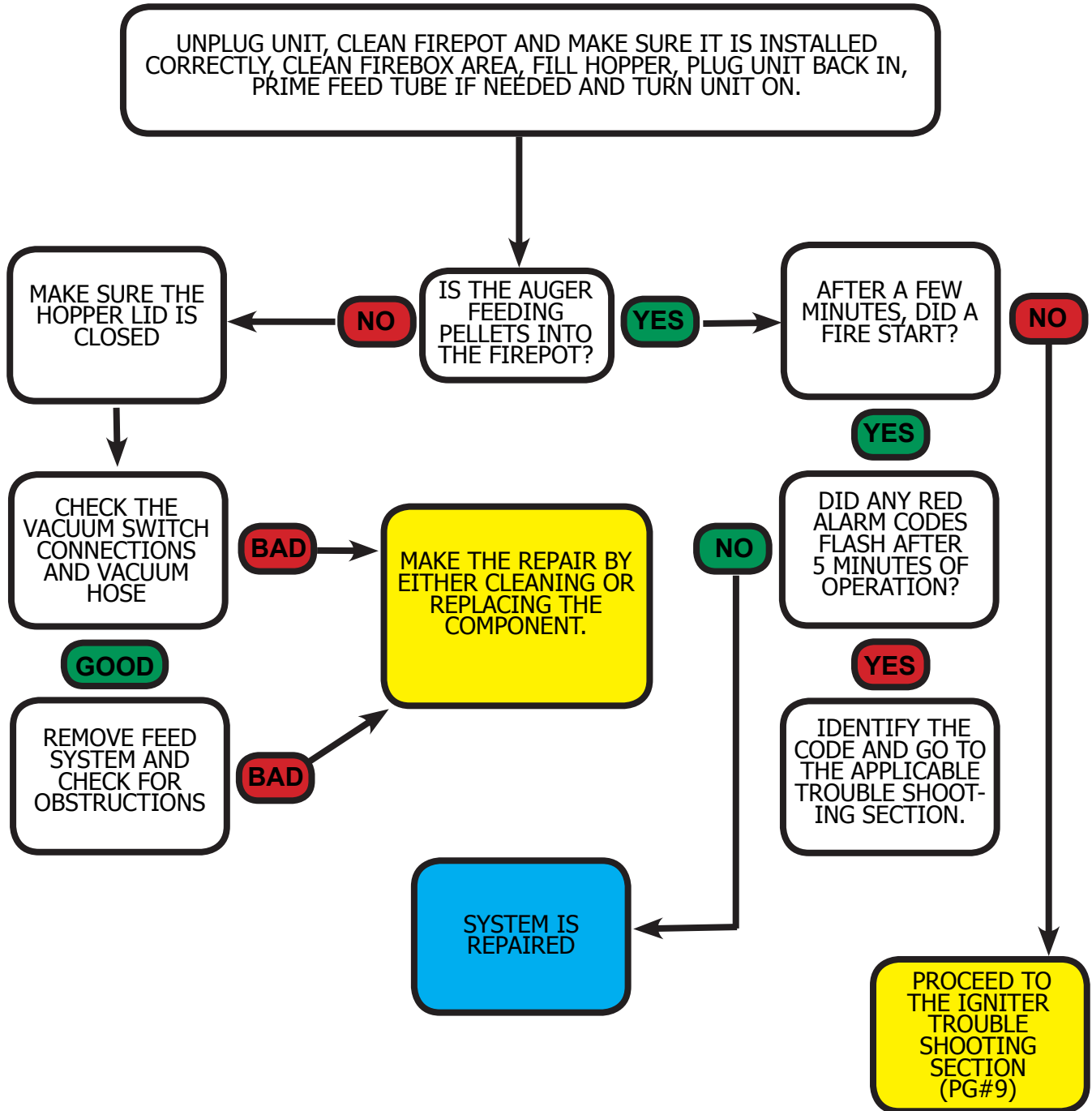
8 Flashes: Exhaust Over Temperature



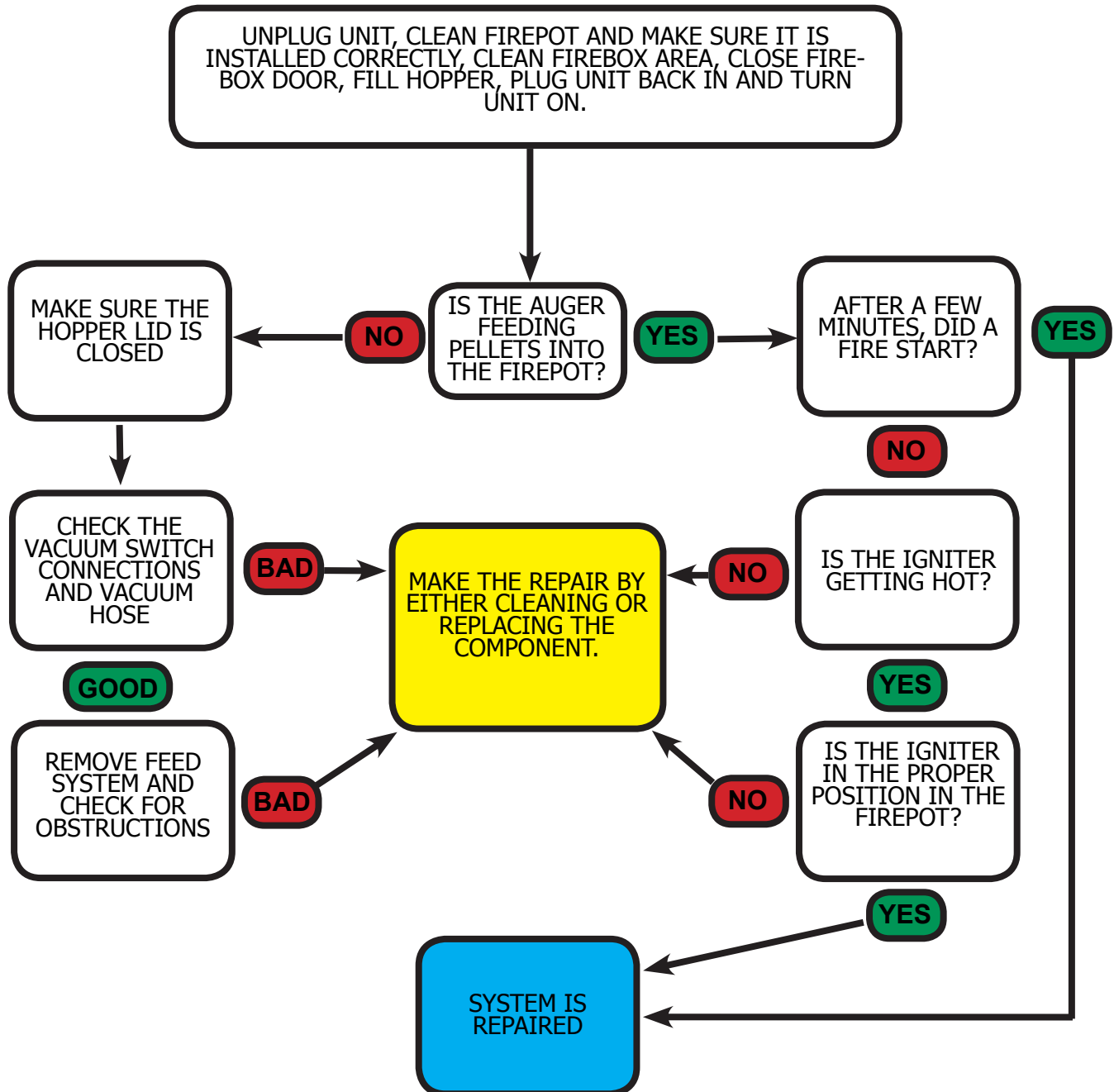
Lazy or Sooty Flames



1 Flash: Empty Hopper

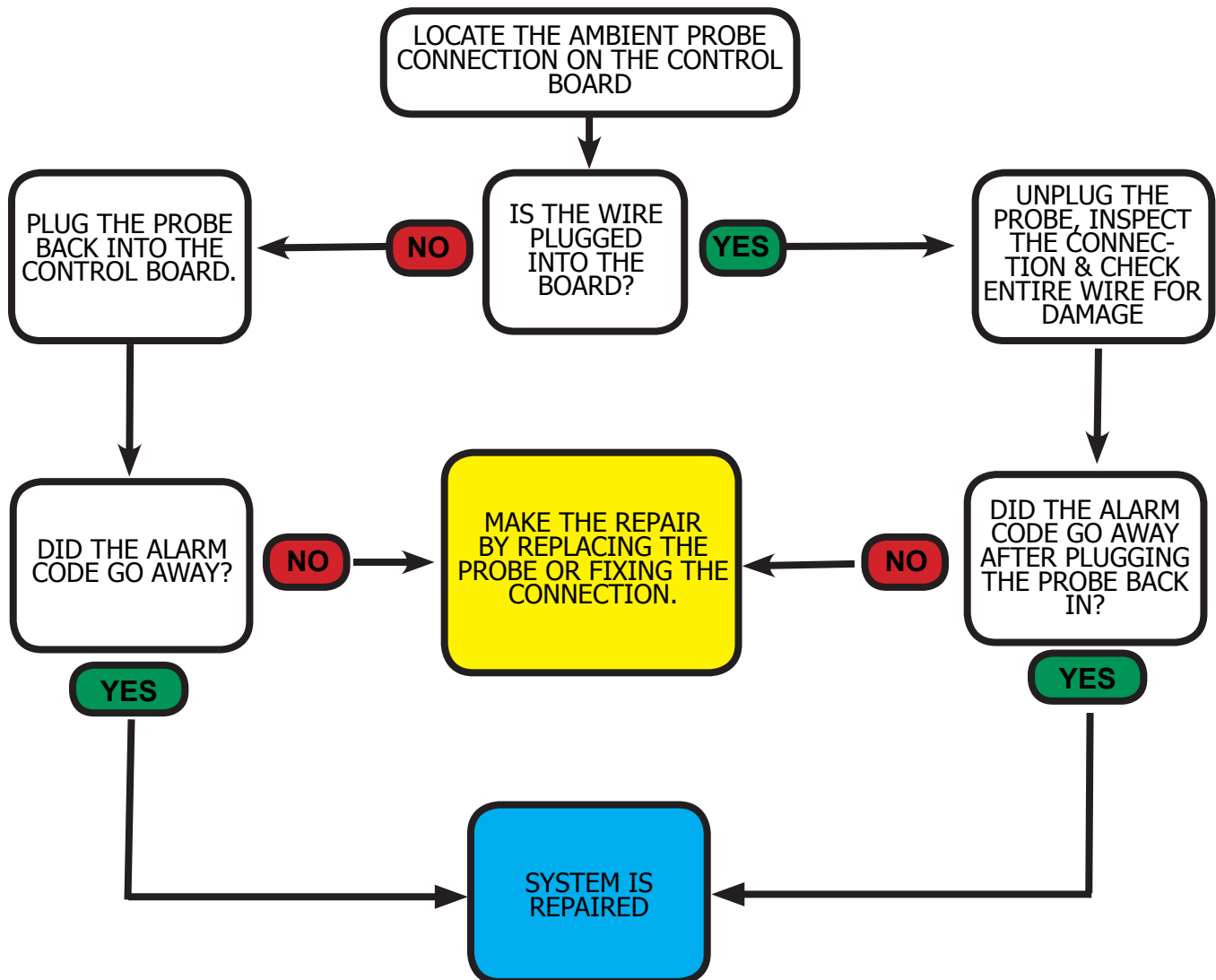


4 Flashes: Missed Ignition

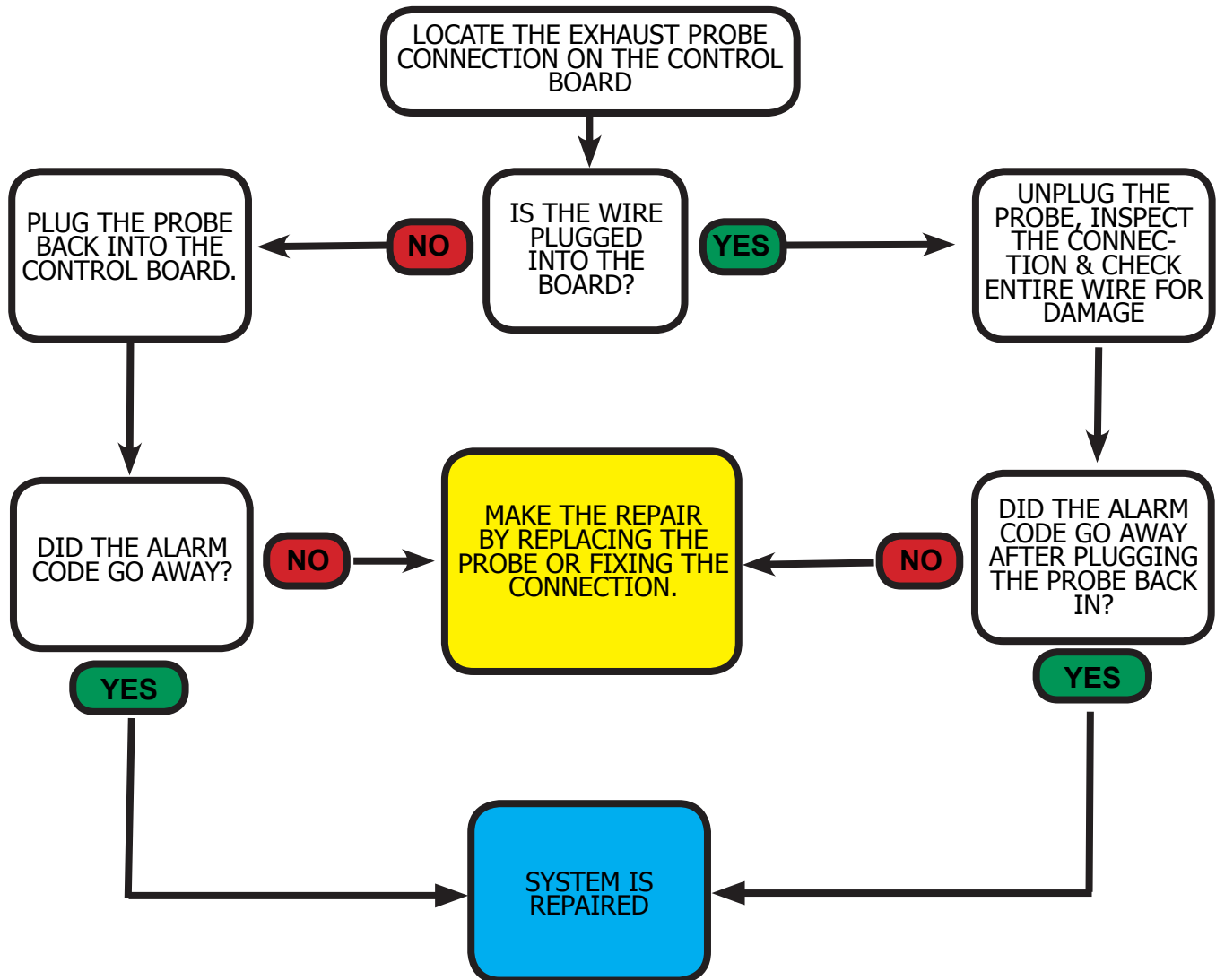


3 Flashes: Ambient Probe Alarm

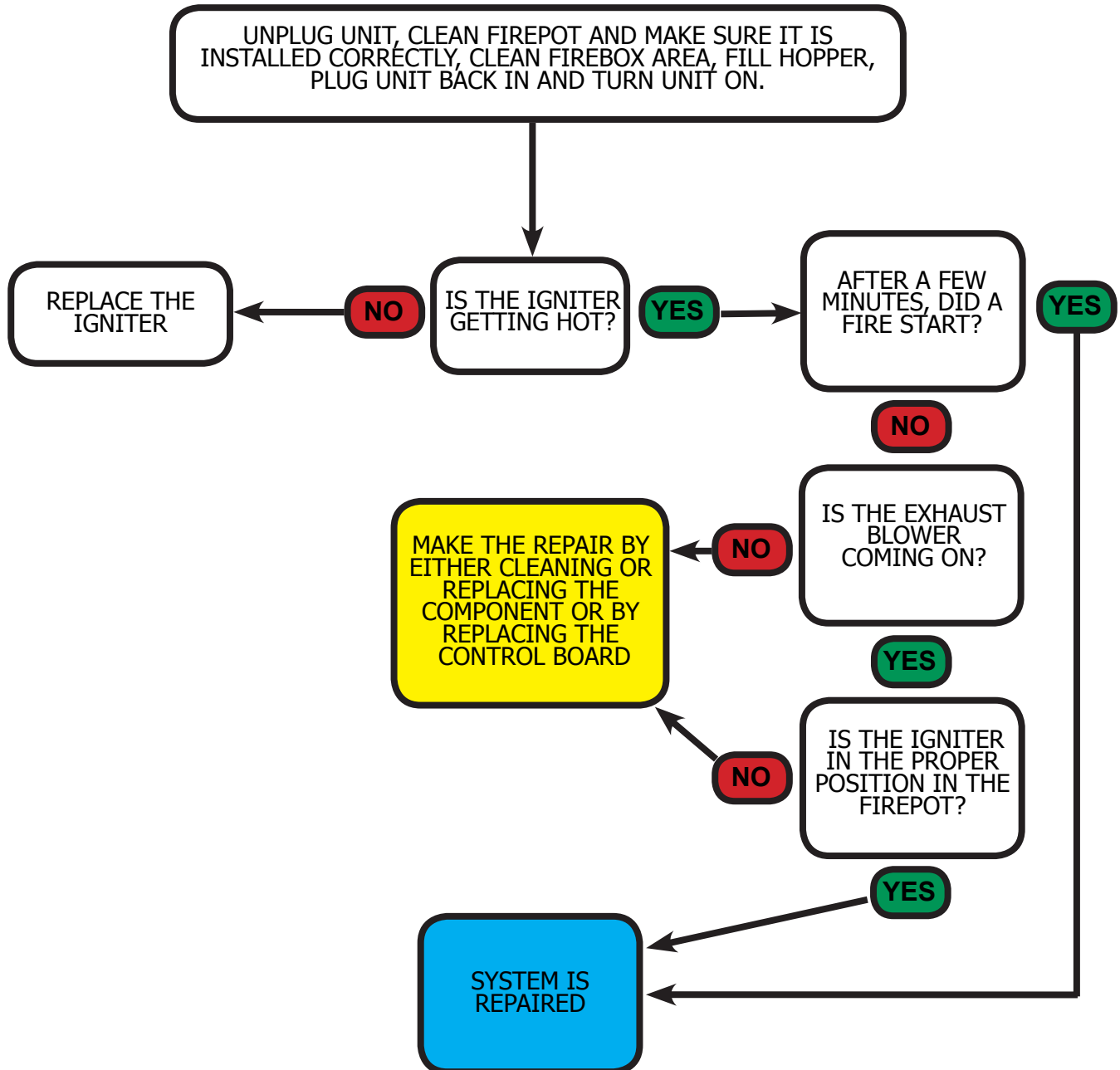
TECH TIP:
THE PROBE WILL SENSE TEMPERATURE IN THE ROOM. IF THE UNIT IS CYCLING TOO MUCH, MOVE THE PROBE FARTHER AWAY FROM THE STOVE.



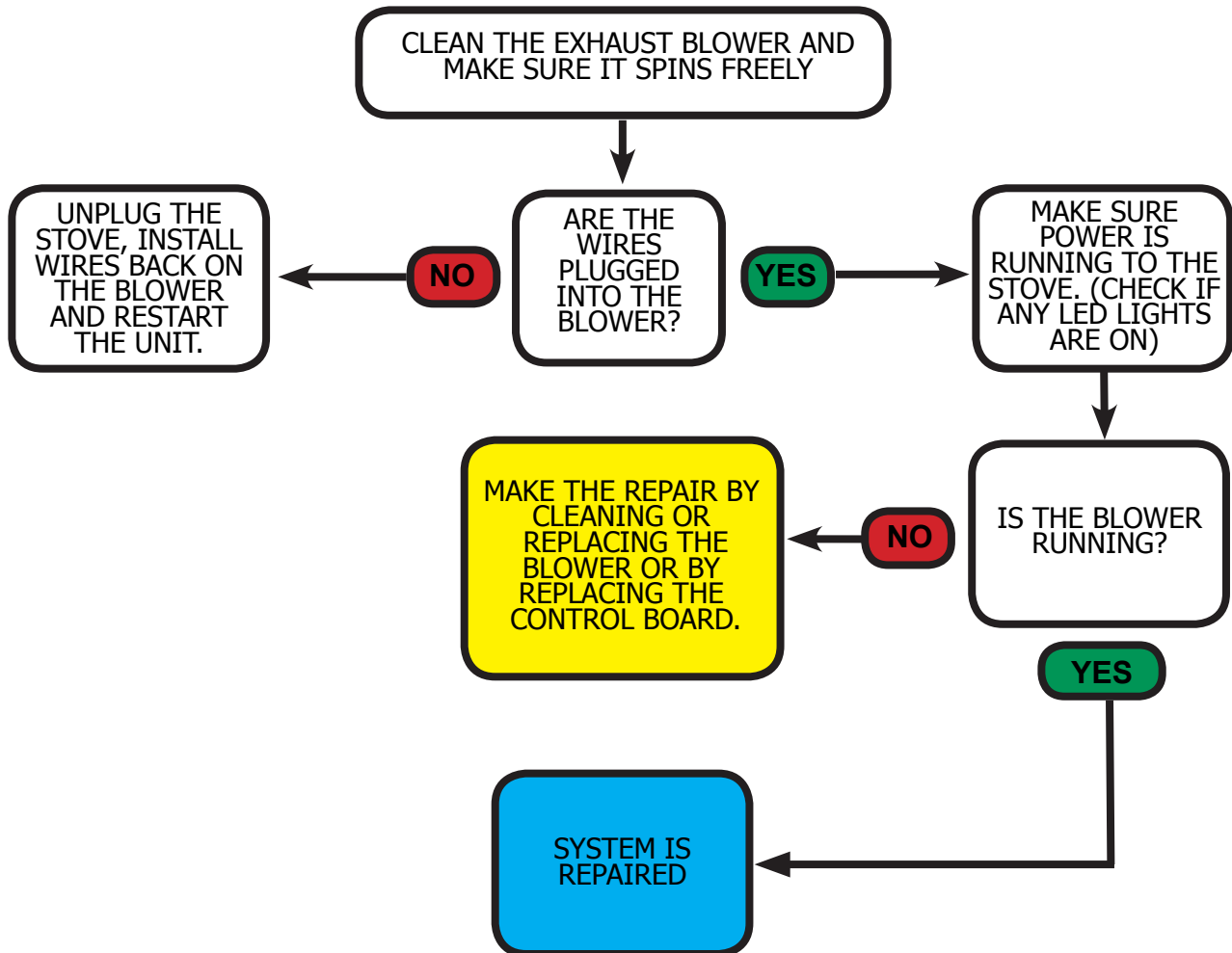
2 Flashes: Exhaust Probe Fail



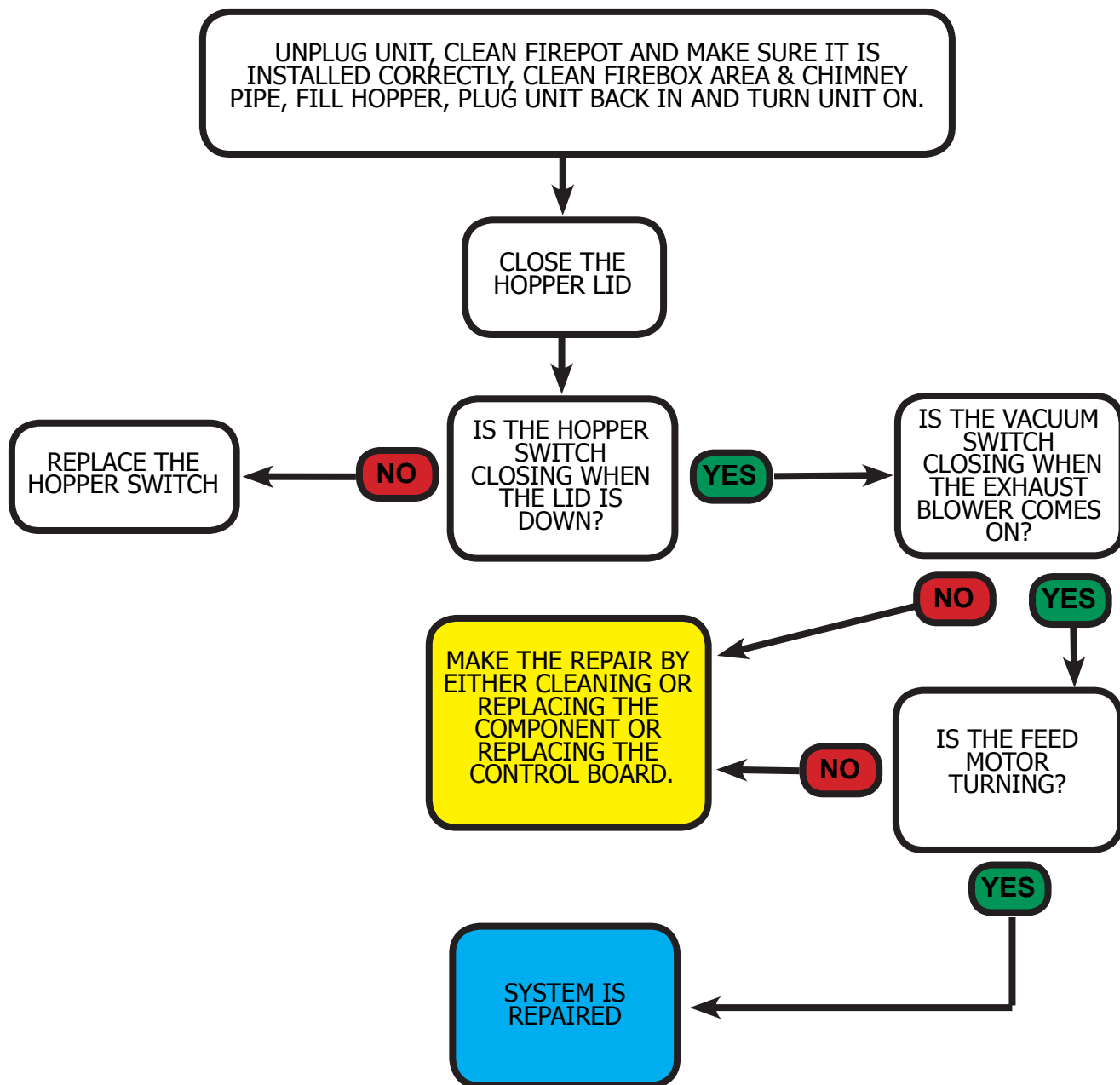
Not Lighting the Fuel



Exhaust Blower Not Coming On



Not Feeding Pellets



No Power

