



# ACUTRON CONTROL PELLET STOVES

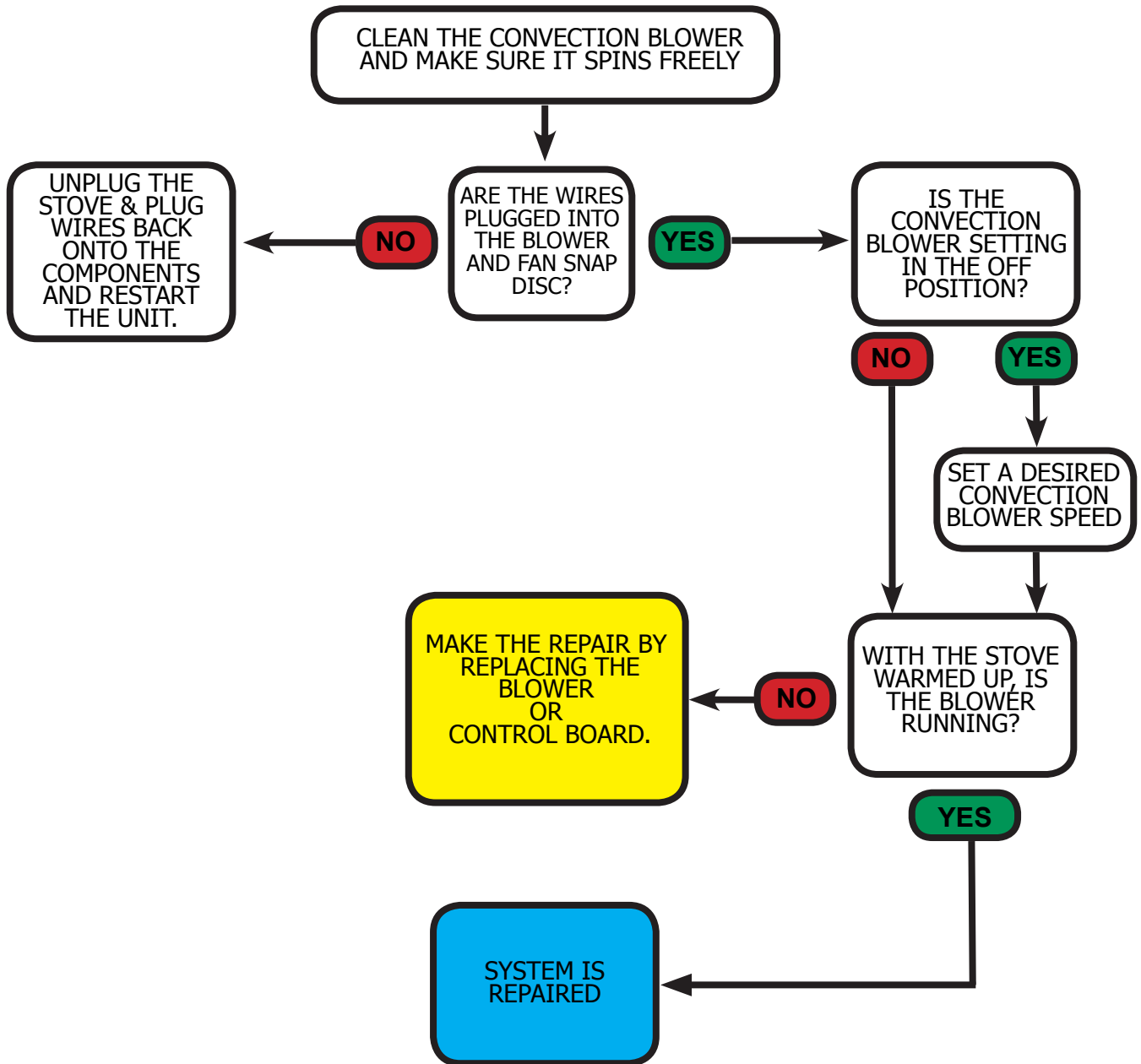
## Recommended Repair Procedures

Symptom	Repair Procedure
<a href="#">Unit Will Not Start</a> .....	<a href="#">Page 5</a>
<a href="#">No Heat Output</a> .....	<a href="#">Page 8</a>
<a href="#">Smoke Smell or Smoke Spillage</a> .....	<a href="#">Page 7</a>
<a href="#">Stove Keeps Going Out</a> .....	<a href="#">Page 6</a>
<a href="#">Stove Will Not Shut Off</a> .....	<a href="#">Page 3</a>
<a href="#">Not Feeding Pellets</a> .....	<a href="#">Page 11</a>
<a href="#">Not Lighting the Fuel</a> .....	<a href="#">Page 9</a>
<a href="#">Lazy or Sooty Flames</a> .....	<a href="#">Page 4</a>
<a href="#">No Power</a> .....	<a href="#">Page 12</a>
<a href="#">Convection Blower Not Coming On</a> .....	<a href="#">Page 2</a>
<a href="#">Exhaust Blower Not Coming On</a> .....	<a href="#">Page 10</a>
<a href="#">Fuel Build Up in the Grate</a> .....	<a href="#">Page 4</a>

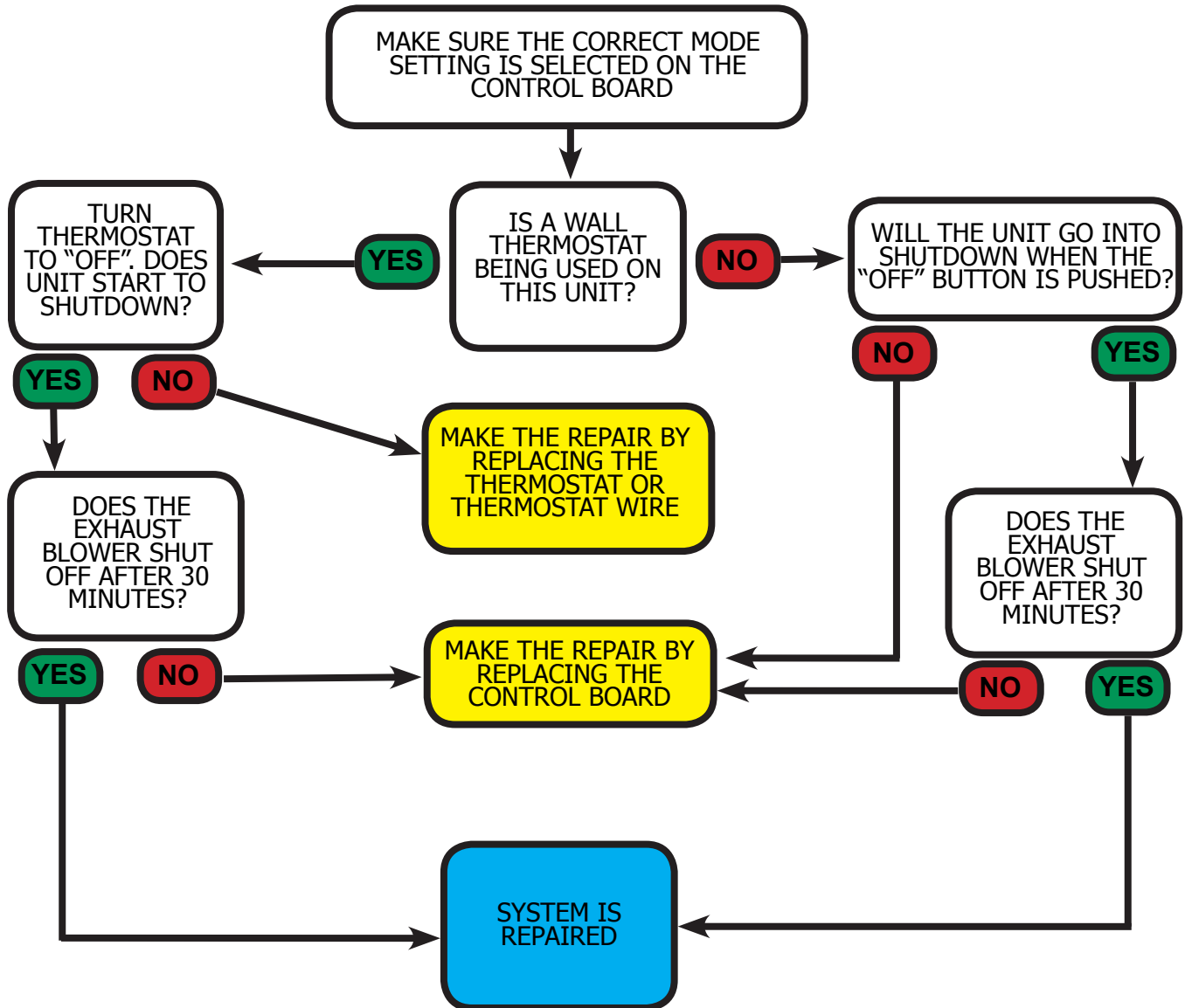
Refer to the Owner’s Manual for information on making adjustments to the unit or for the procedures for replacing parts.

**WARNING!**  
ALWAYS UNPLUG THE STOVE BEFORE CLEANING, REPLACING COMPONENTS AND CHECKING WIRE CONNECTIONS.

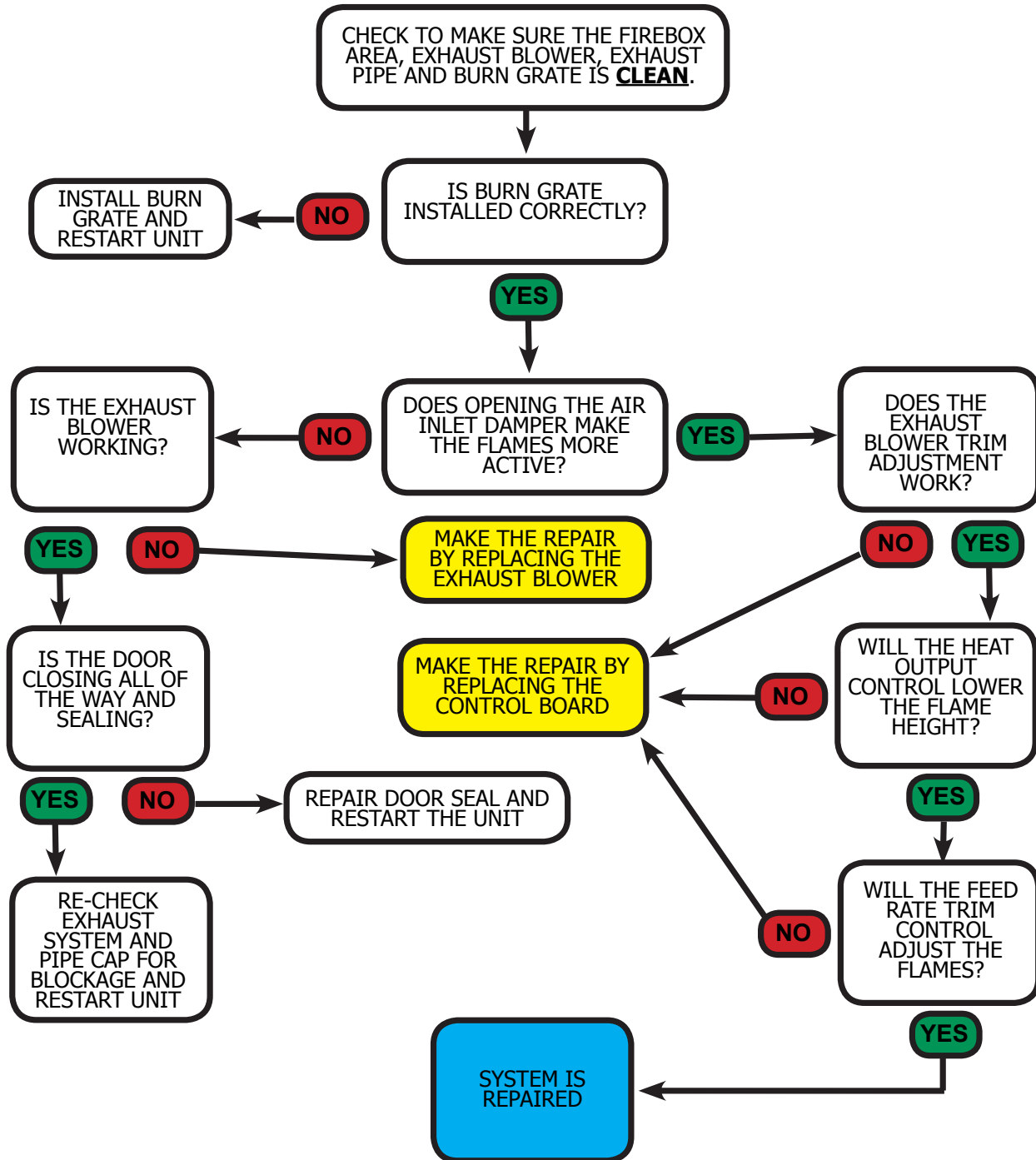
## Convection Blower Troubleshooting



## Stove Will Not Shut Off

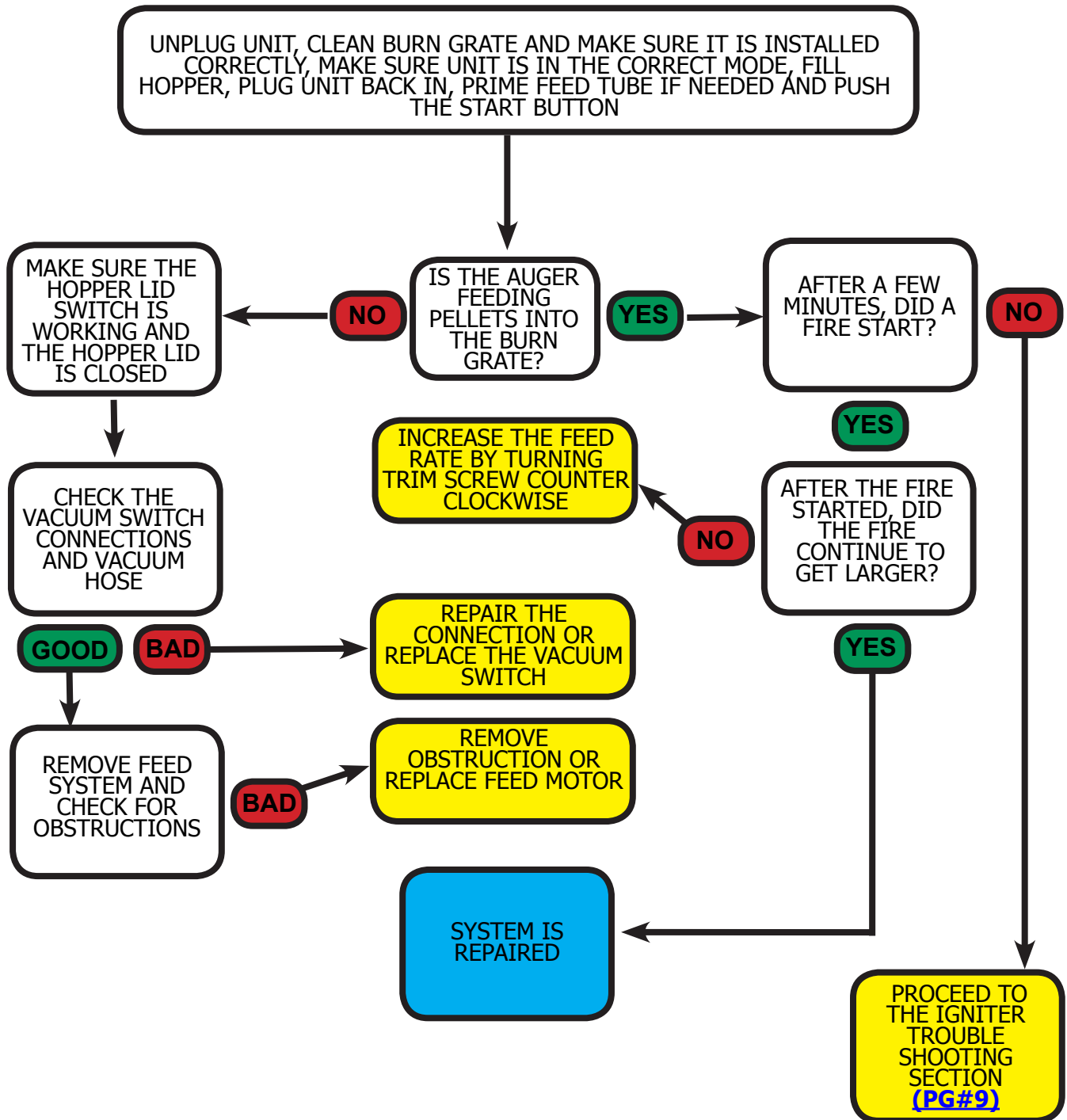


## Lazy, Sooty Flames or Fuel Building Up in the Burn Grate

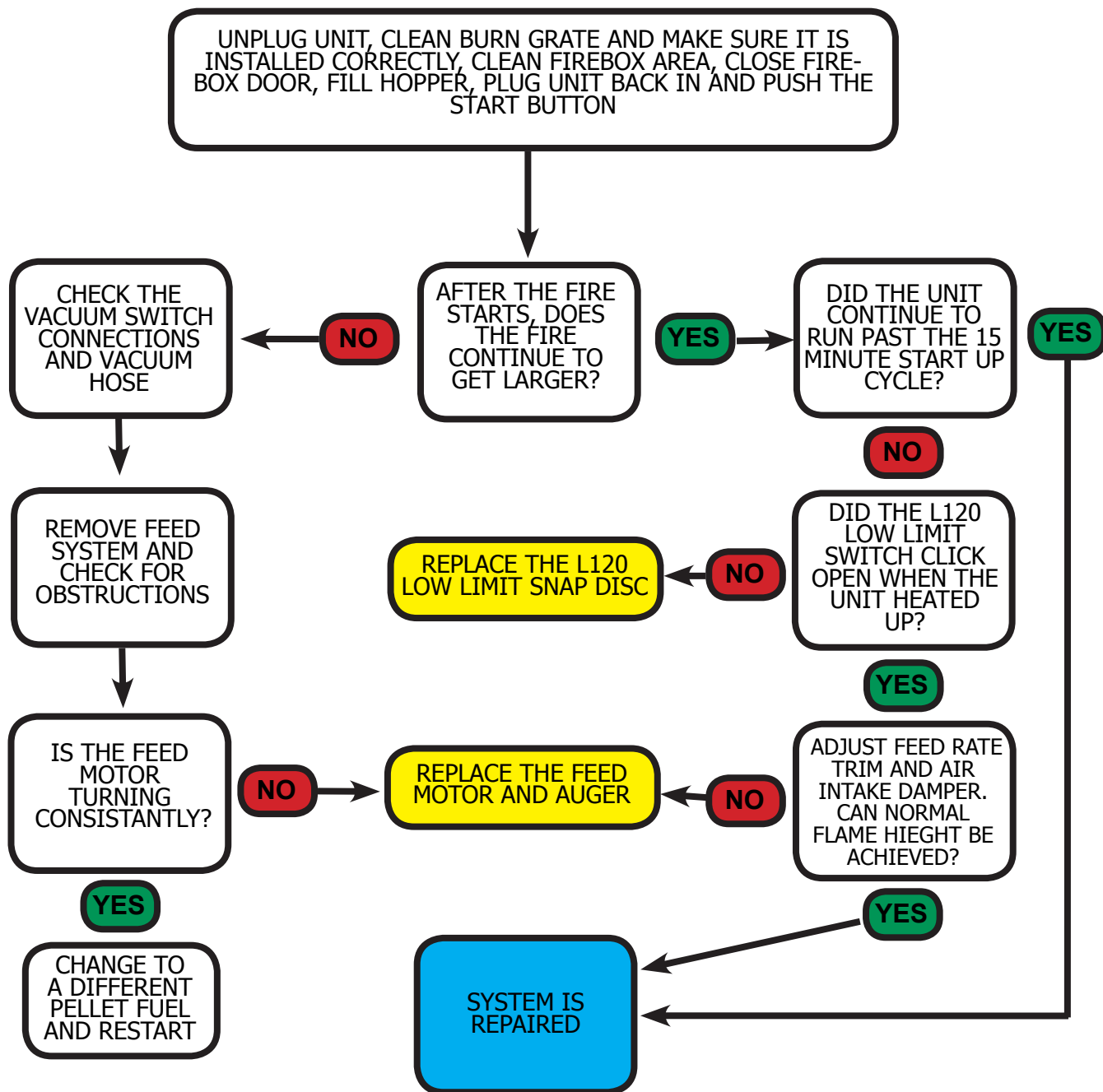


[Back to Table of Contents](#)

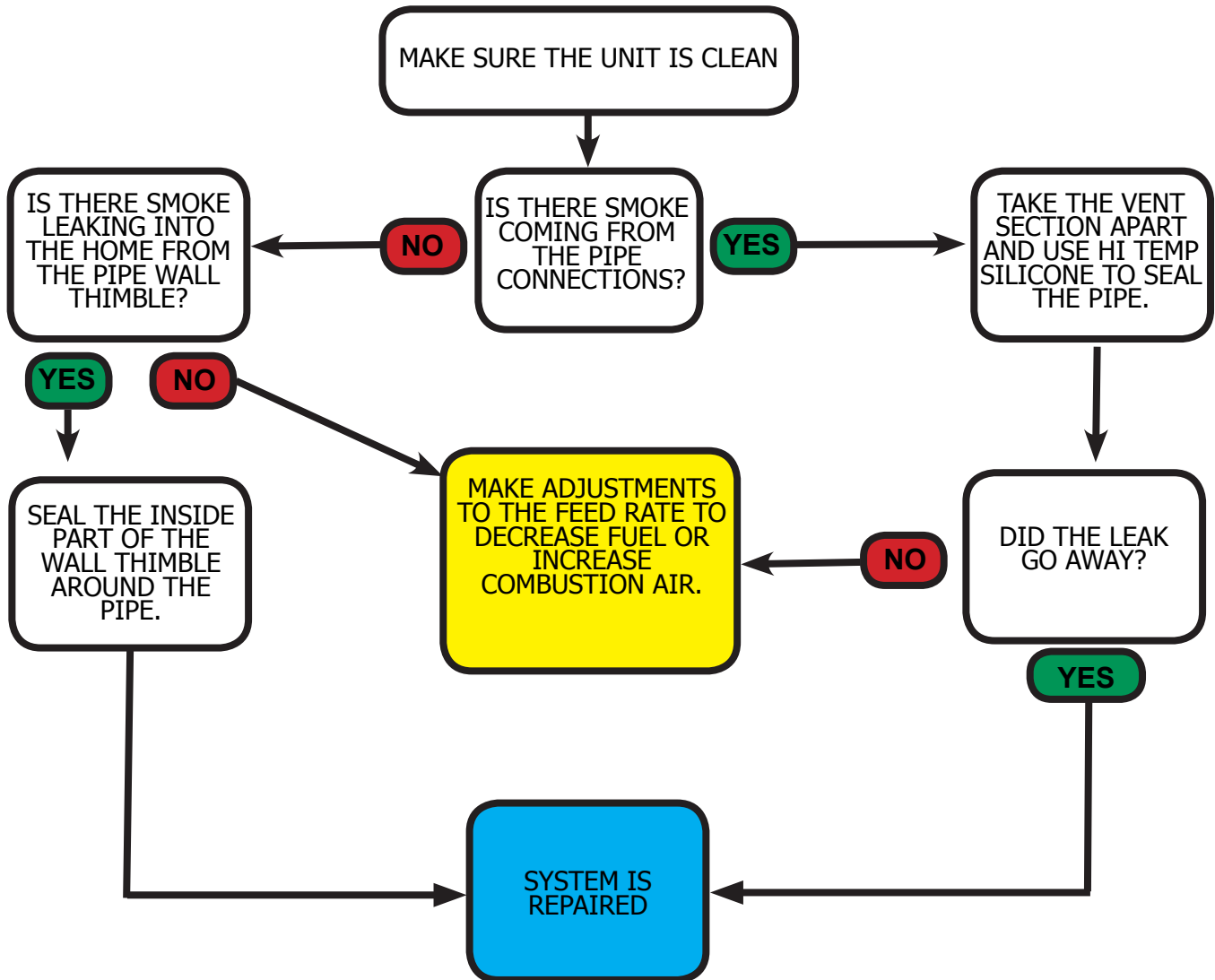
## Unit Will Not Start



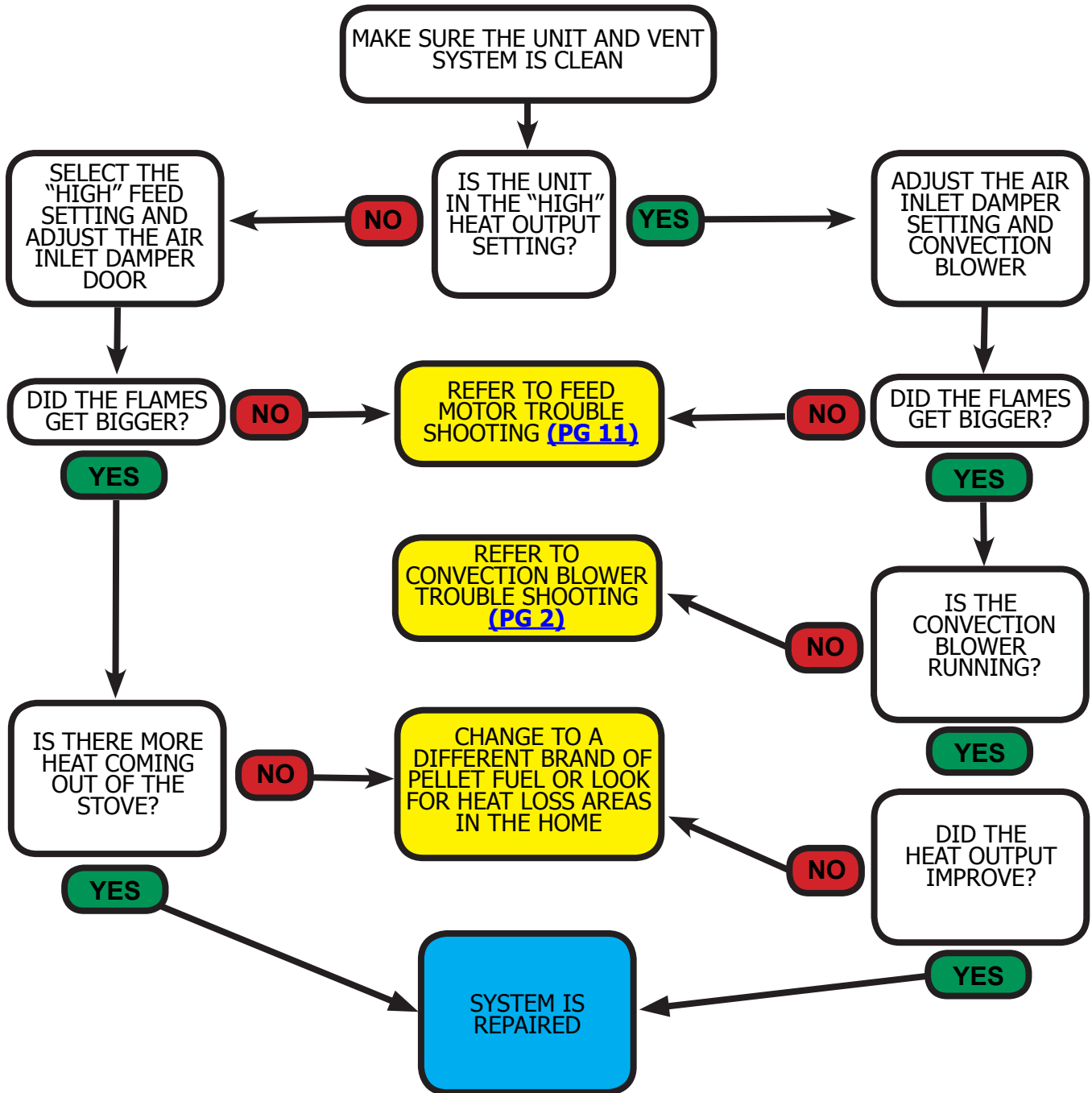
## Stove Keeps Going Out



## Smoke Smell or Smoke Spillage



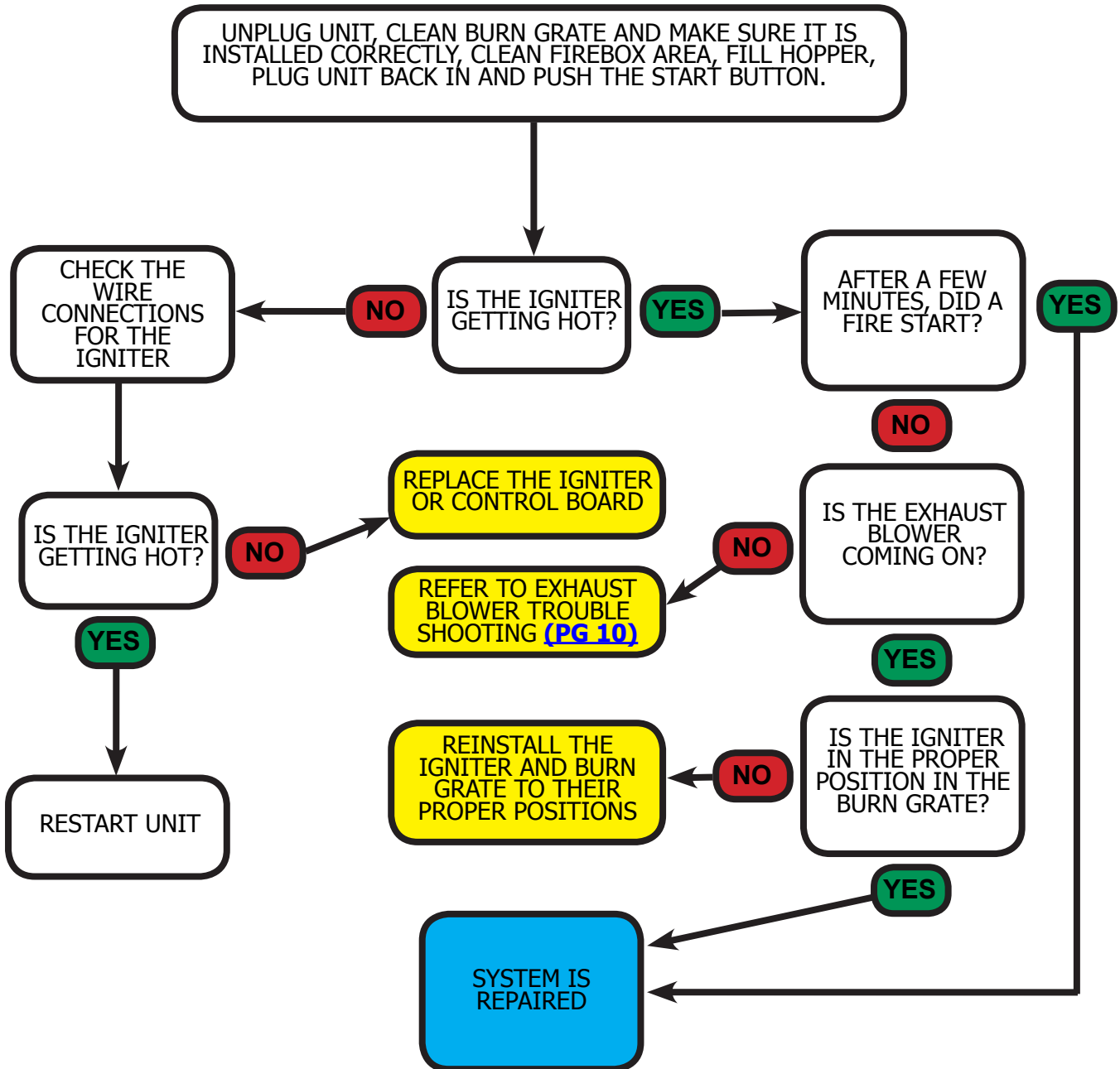
## No Heat Output



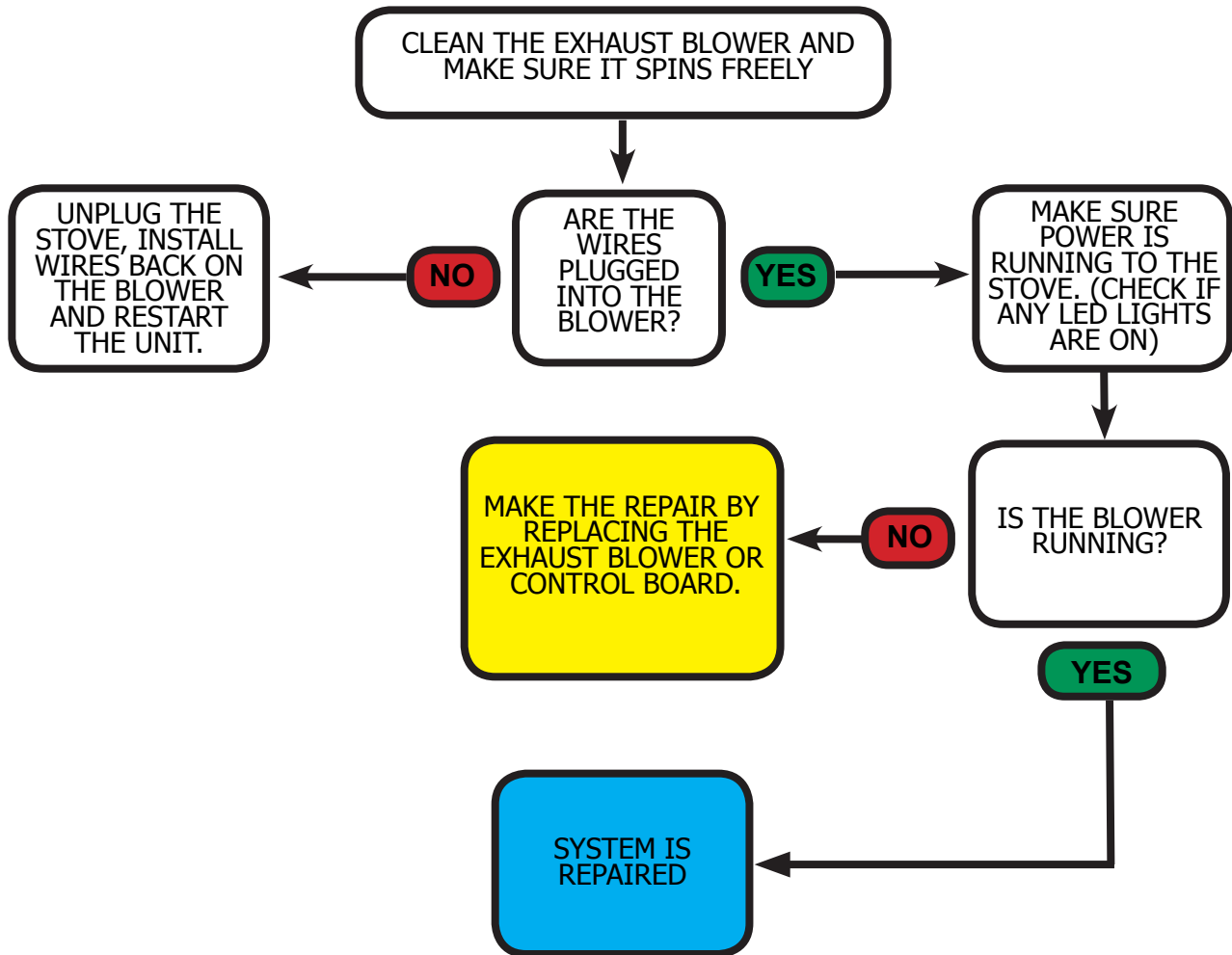
[Back to Table of Contents](#)



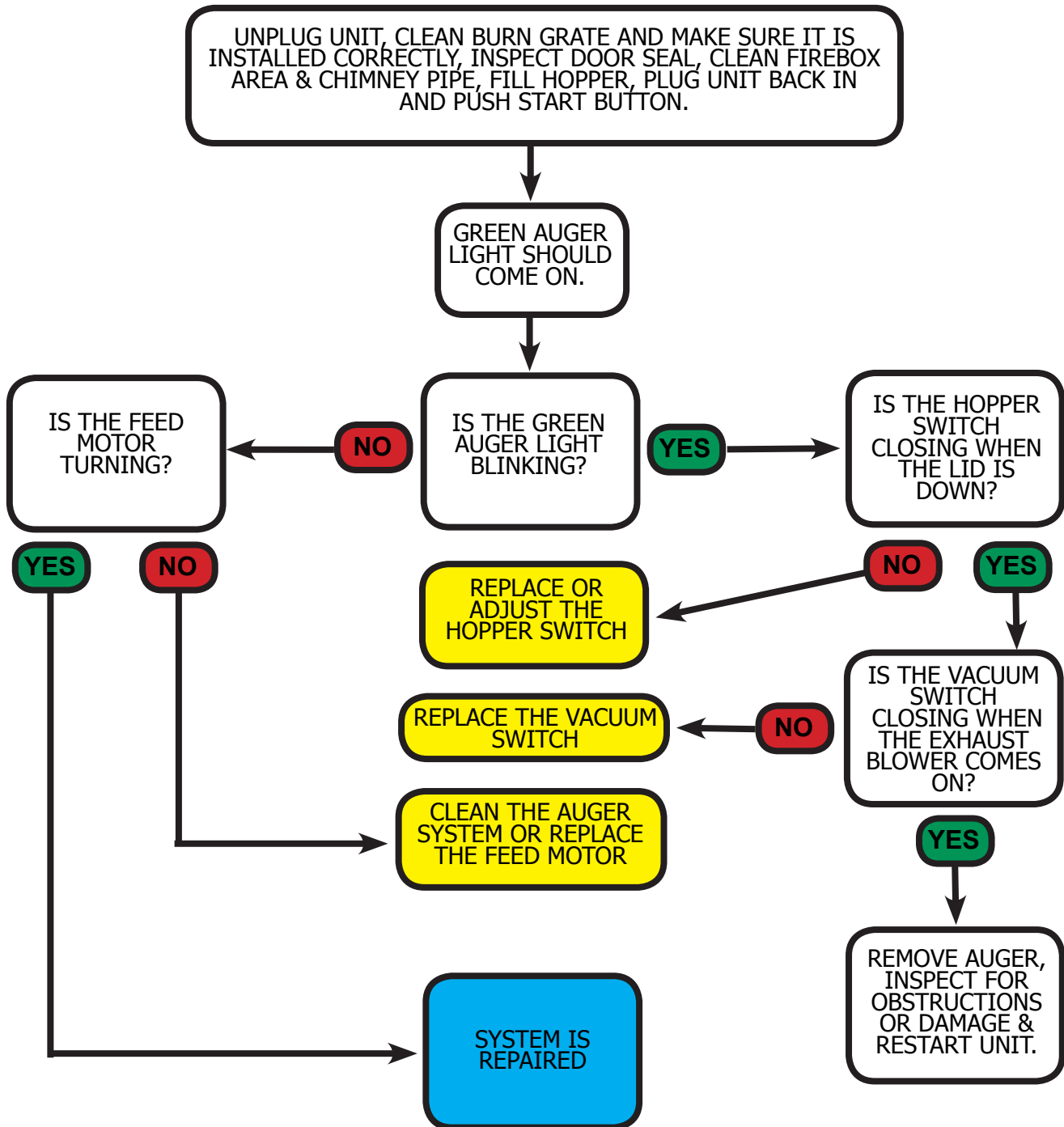
## Not Lighting the Fuel



## Exhaust Blower Not Coming On



## Not Feeding Pellets



[Back to Table of Contents](#)

## No Power

