

NOTES:

1 NO COMBUSTIBLE MATERIAL WITHIN 6" OF THE TOP OF THE FIREPLACE.  
COMBUSTIBLE MATERIAL SHALL NOT BE PLACED DIRECTLY ON THE FACE OF THE FIREPLACE, TOP.  
NO COMBUSTIBLE MATERIAL WITHIN 2" OF THE SIDES AND BACK OF THE FIREPLACE.  
COMBUSTIBLE MATERIAL SHALL NOT BE PLACED DIRECTLY ON THE FACE OF THE FIREPLACE, BACK AND SIDES.

2 GAS PRESSURE LINE: 75,000 BTU NOMINAL AT 7.0"/11".0 W.C. REQUIRED. **NG/LP**

3 STEEL 2" SURFACE MAY BE LEFT EXPOSED OR COVERED WITH NON-COMBUSTIBLE FINISHING MATERIAL.  
FASTENERS SHALL NOT PENETRATE THE 2" SURFACE.

4 COMBUSTIBLE PROJECTIONS ( HEARTH ) SHALL BE 13" OR MORE BELOW OPENING EDGE.  
COMBUSTIBLE PROJECTIONS ( MANTEL ) SHALL BE 18" OR MORE ABOVE OPENING EDGE.

5 NON-COMBUSTIBLE MATERIAL MAY BE APPLIED TO SURFACE'S SHOWN PRIOR TO FINISHING MATERIAL.  
IF FINISHING MATERIAL REQUIRES A STRUCTUAL BACKER.

6 ( SHEET 1 AND 2 )  
DIMENSION SHOWN IS ALLOWABLE FINISHING DIMENSION.  
FINISHING MATERIAL SHALL NOT OVERLAP DIMENSION SHOWN.

7 FIREPLACE FEATURE:  
FIREPLACE SHALL HAVE LINEAR FLAME DOWN THE LONG AXIS, RIBBON BURNER.  
FIREPLACE SHALL HAVE MEDIA BED LIGHTING.

8 TRANSFORMER BOX INCLUDES TRANSFORMER ONLY, 12 GA WIRE MUST BE USED FROM  
TRANSFORMER TO VALVE AT ALL TIME.12 GA WIRE IS SUPPLIED BY OTHERS  
100' MAX LENGTH BETWEEN TRANSFORMER AND FIREPLACE.

9 POWER REQUIREMENTS:  
INPUT VOLTAGE 120 TO TRANSFORMER. PLACE ON/OFF SWITCH ON INPUT  
VOLTAGE SIDE OF TRANSFORMER.IGNITION SYSTEM OPERATES ON 24VAC.  
12 GAUGE WIRE REQUIRED ON 24VAC SIDE OF TRANSFORMER TO THE VALVE.  
12 GUAGE WIRE MUST BE USED FROM TRANSFORMER TO VALVE AT ALL TIMES,

10 FIREPLACE SHALL BE MADE USING STAINLESS STEEL MATERIAL.  
ALL VISIBLE SURFACES SHALL BE BRUSHED STAINLESS STEEL.

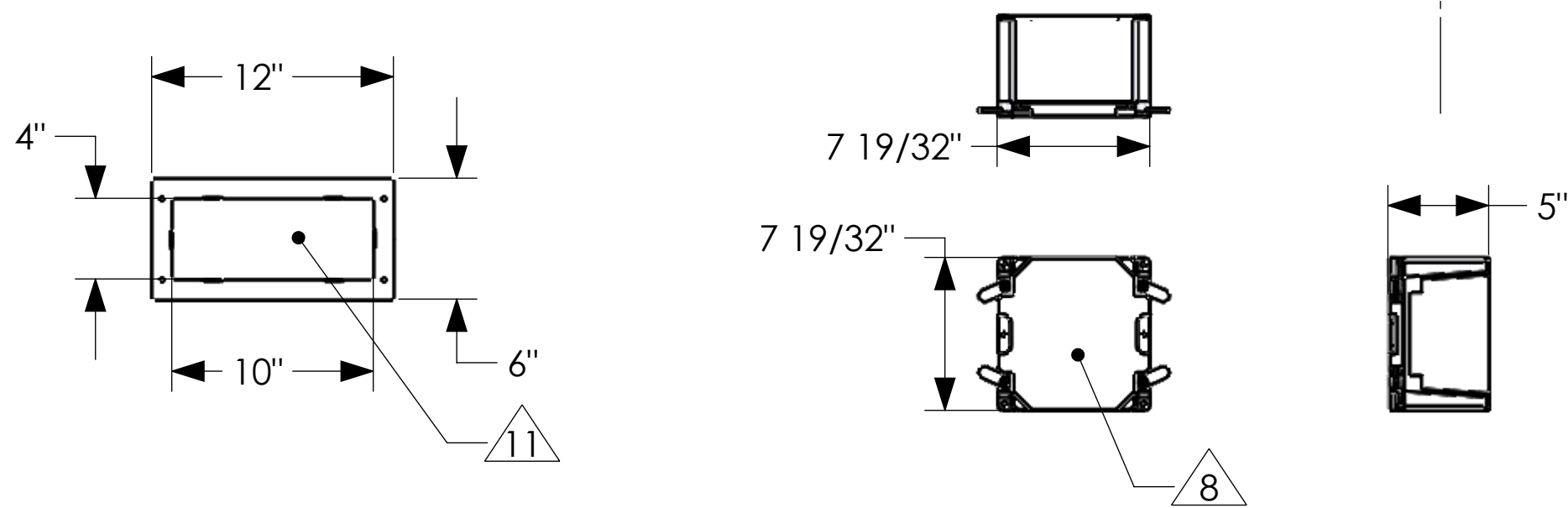
11 **TWO GRILLS ARE PROVIDED AND REQUIRED FOR PROPER CROSS FLOW VENTILATION.**  
ONE GRILL IS REQUIRED ON THE PILOT/VALVE END.  
THE OTHER GRILL IS REQUIRED ON EITHER FRONT OR OPPOSITE END OF THE PILOT/VALVE.  
**GRILL OPENINGS MUST BE CLEAR OF ALL OBSTRUCTION AT ALL TIMES.**

12 DRAIN HOLES SHALL BE LOCATED ALONG THE EDGE AND SURFACE AS SHOWN.  
HOLES NEED TO BE KEPT CLEAR TO ALLOW FOR DRAINAGE TO DAYLIGHT.  
PROVISIONS SHALL BE MADE TO FINISHING MATERIAL TO PREVENT WATER FROM  
BEING TRAPPED BETWEEN THE FIREPLACE AND FINISHING MATERIAL.

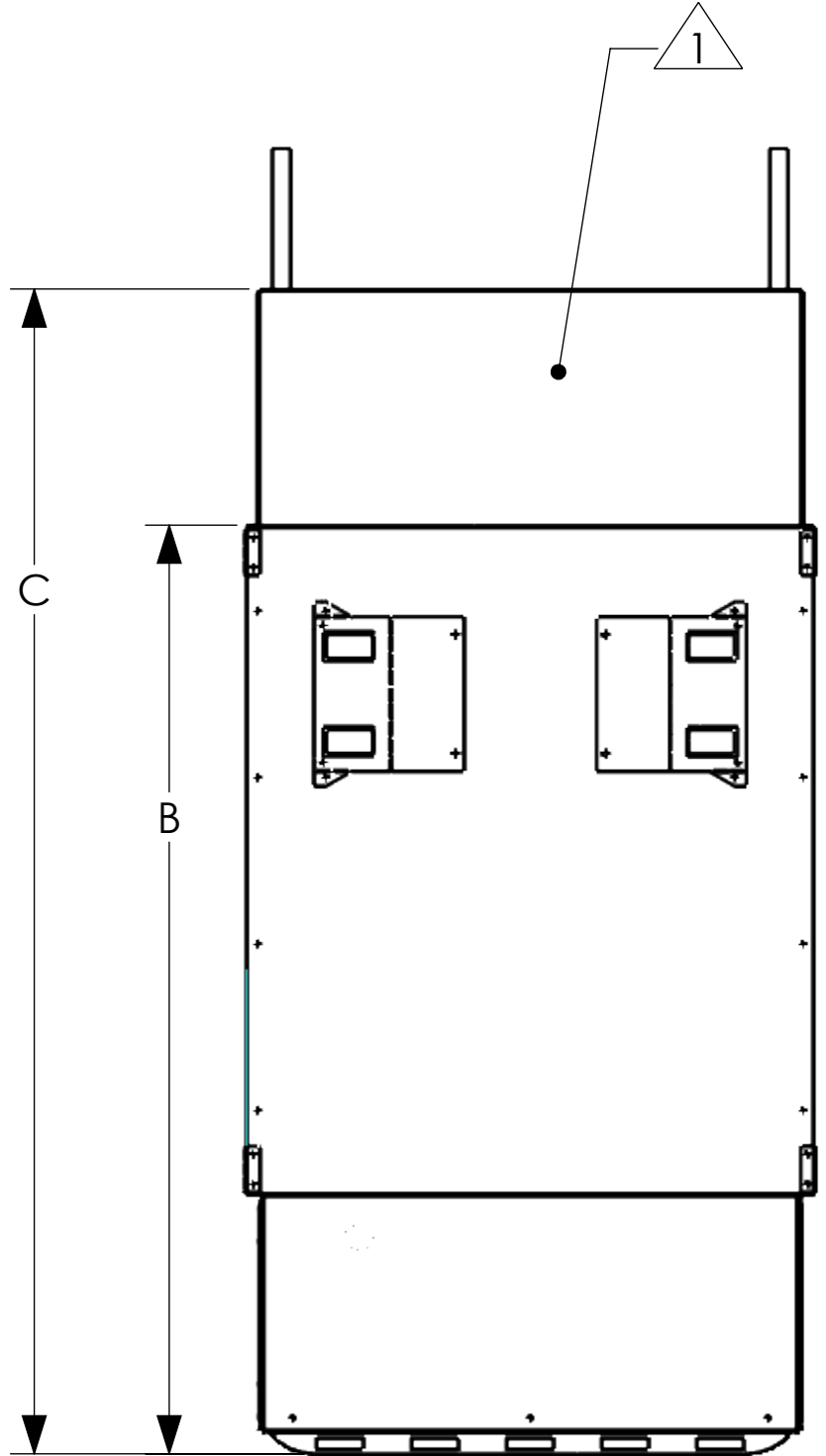
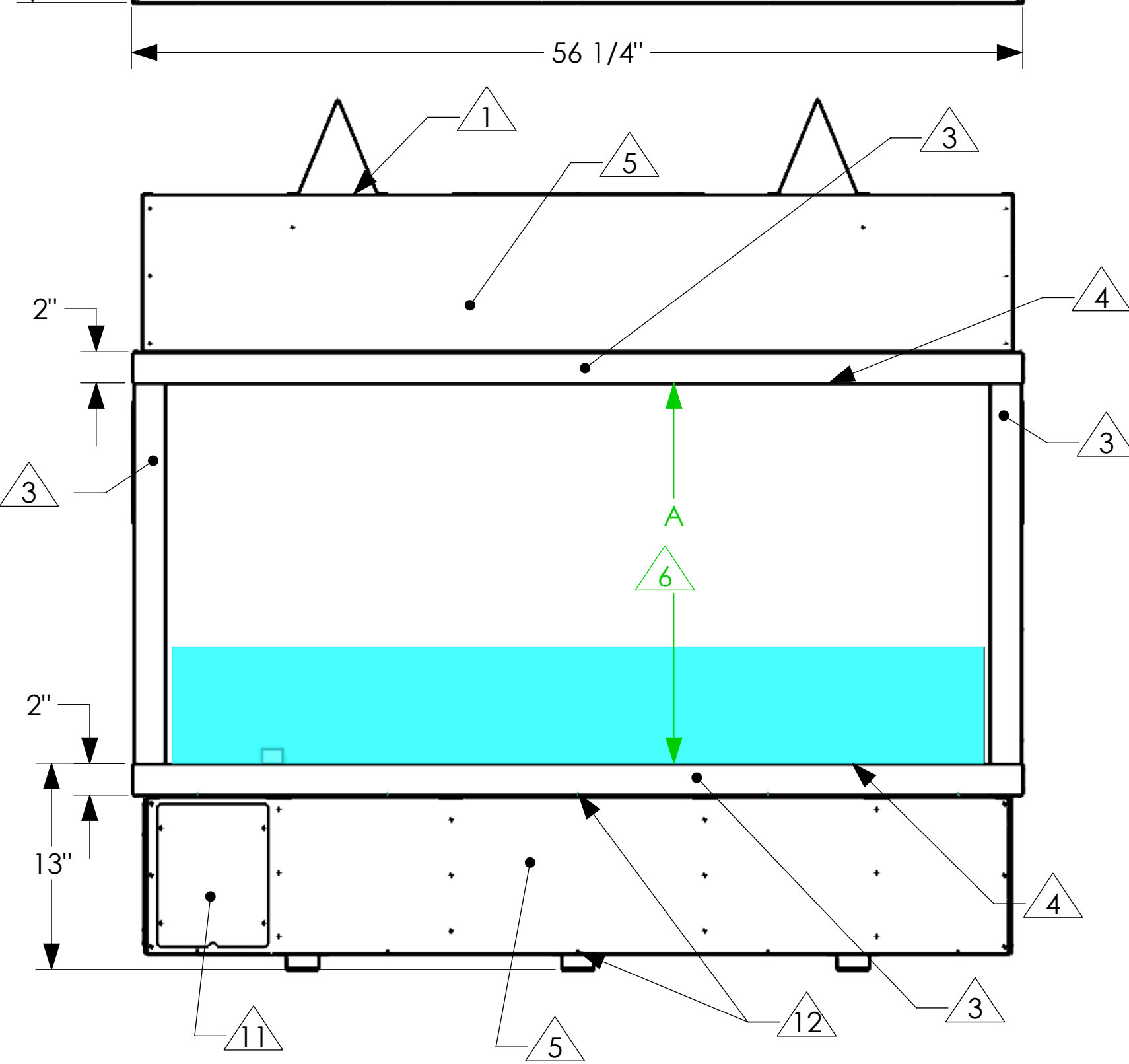
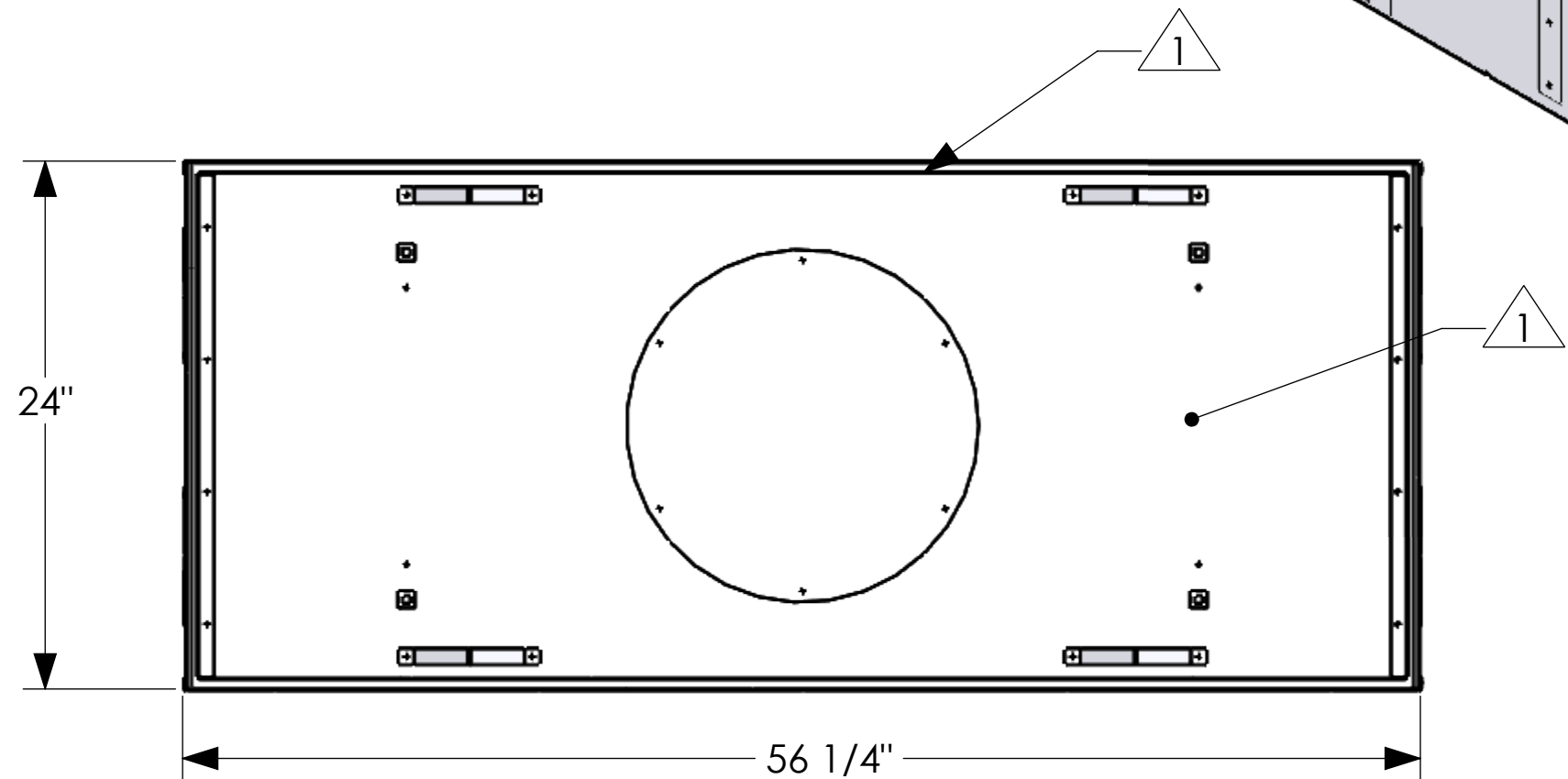
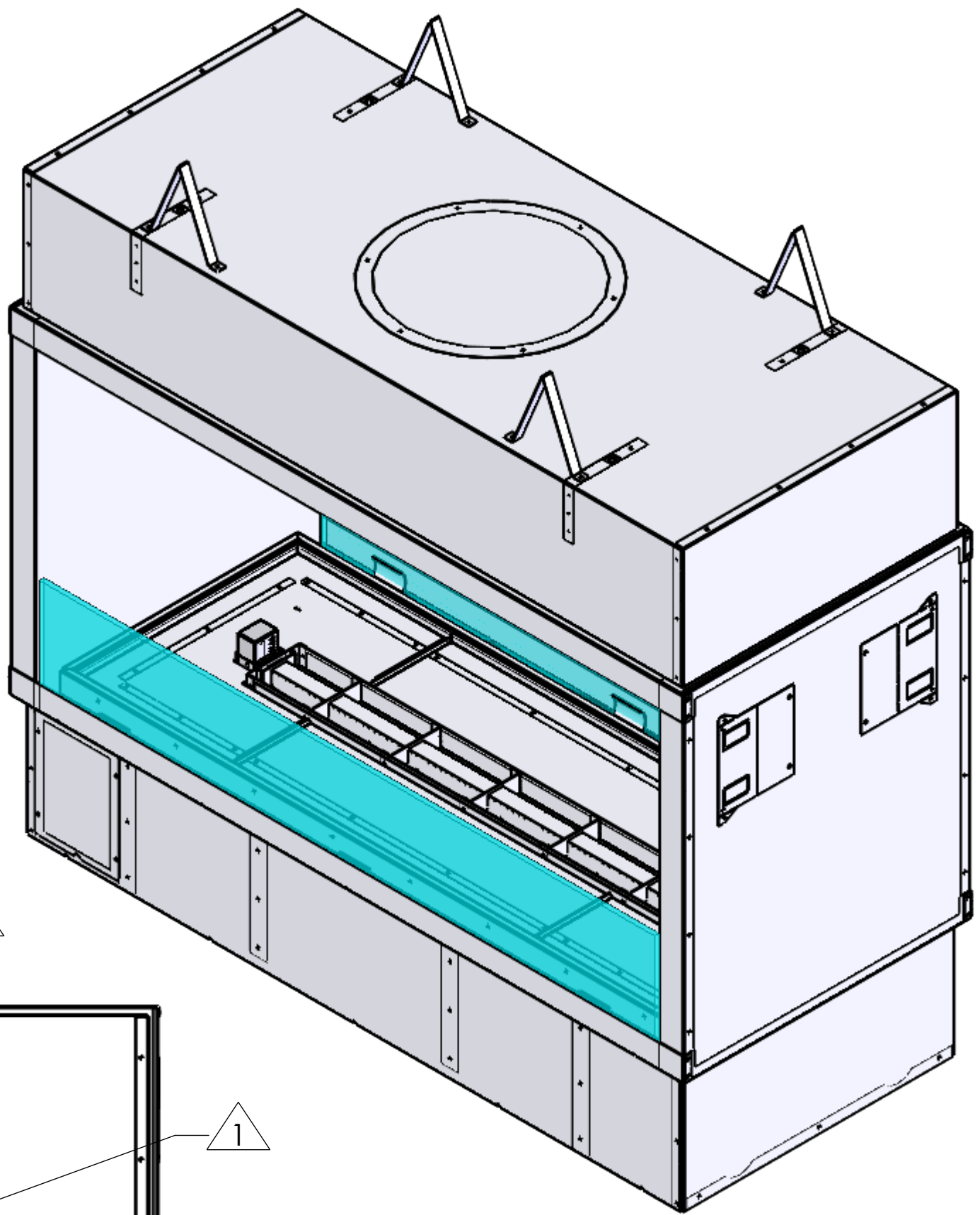
13 COMBUSTIBLE OBJECTS SHALL BE A MINIMUM DISTANCE SHOWN  
FROM OPEN FACE OF FIREPLACE.

14 1" CLEARANCE TO B-VENT MUST BE MAINTAINED.


15 (SHEET 2)  
FIREPLACE WILL BE DESIGNED TO ACCEPT 2" THICK MAXIMUM  
FIELD INSTALLED FIREPLACE APPROVED, NON-COMBUSTIBLE MATERIAL,  
PROVIDED BY OTHERS.



STANDARD OPTION, VENT FREE				
MODEL NUMBER	DIM "A"	DIM "B"	DIM "C"	DIM "D"
4-ST-24-OD-LOH	24"	39 1/16"	49"	52"
CUSTOM CONFIGURATION OPTIONS				
CONFIGURATIONS	DIM "E"	DIM "F"	DIM "G"	DIM "D"
VENT FREE, DECORATIVE LEDGE	N/A	N/A	N/A	48"
NATURAL VENT, NO DECORATIVE LEDGE	12"	28 1/8"	Ø 12"	52"
NATURAL VENT, DECORATIVE LEDGE	12"	28 1/8"	Ø 12"	48"



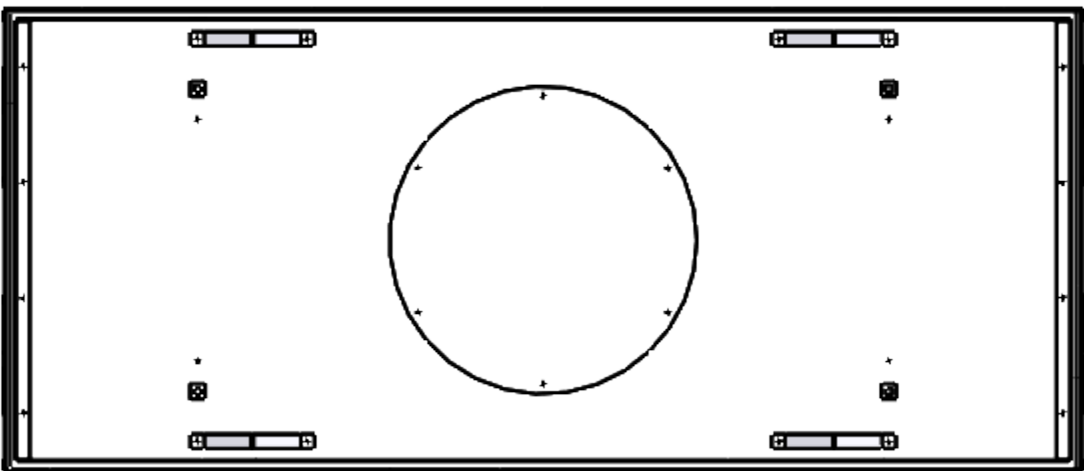
UNLESS OTHERWISE SPECIFIED DIMENSIONS ARE IN **INCHES**: TOLERANCE - (1) PLACE DEC: ±0.1 (2) PLACE DEC: ±0.06 (3) PLACE DEC: ±0.031 ANGLE: ±2° FRACTION ±1/16  
◄ OUTSIDE MATERIAL. ○ EDGE OR INSIDE MATERIAL. ◄ OUTSIDE APEX. • INSIDE APEX. - DIMS ENCLOSED BY AN OVAL ARE CRITICAL DIMENSIONS



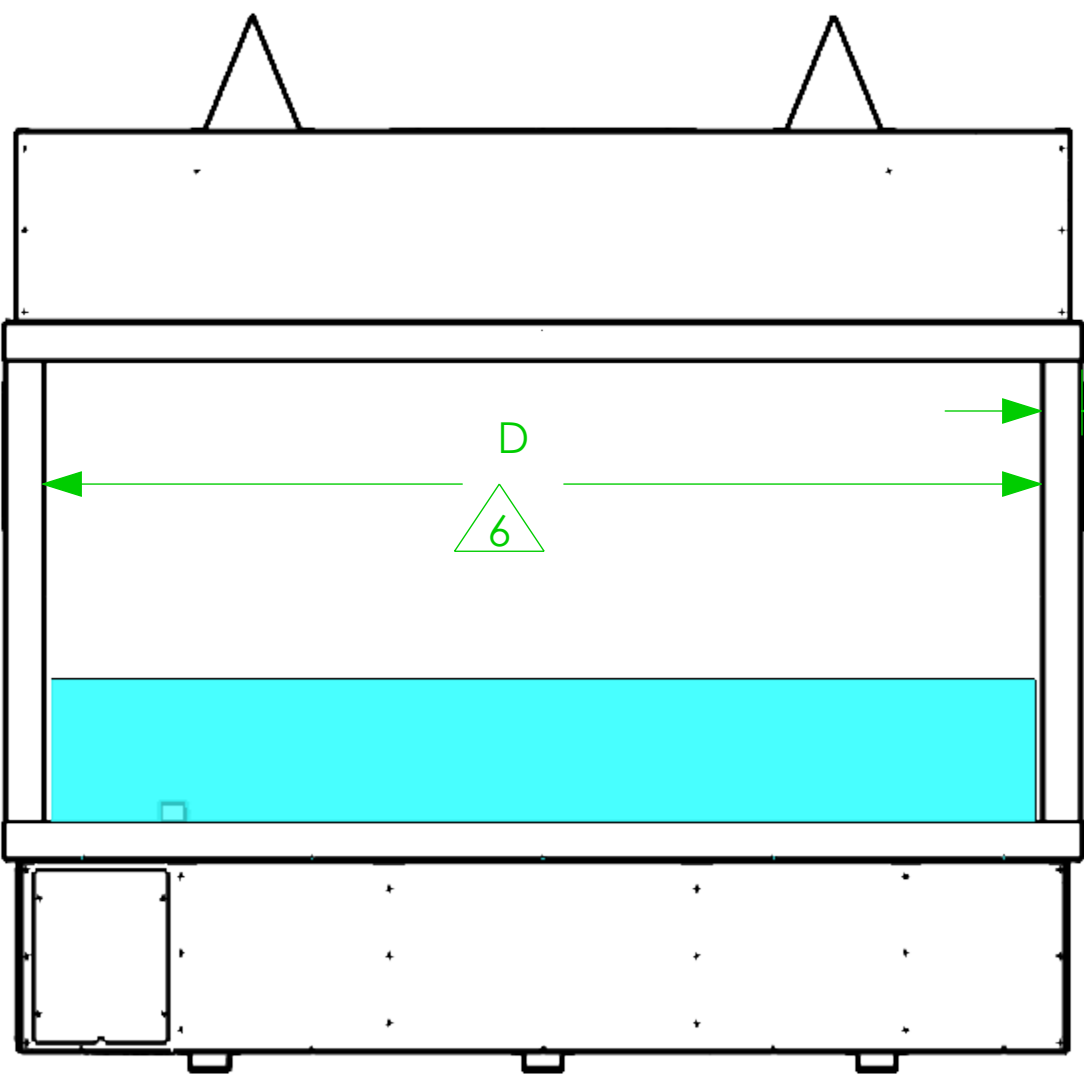
DRAWING AND DESIGN IS PROPERTY OF HEARTH & HOME TECHNOLOGIES

MODEL DESCRIPTION:  
**4' SEE THRU**

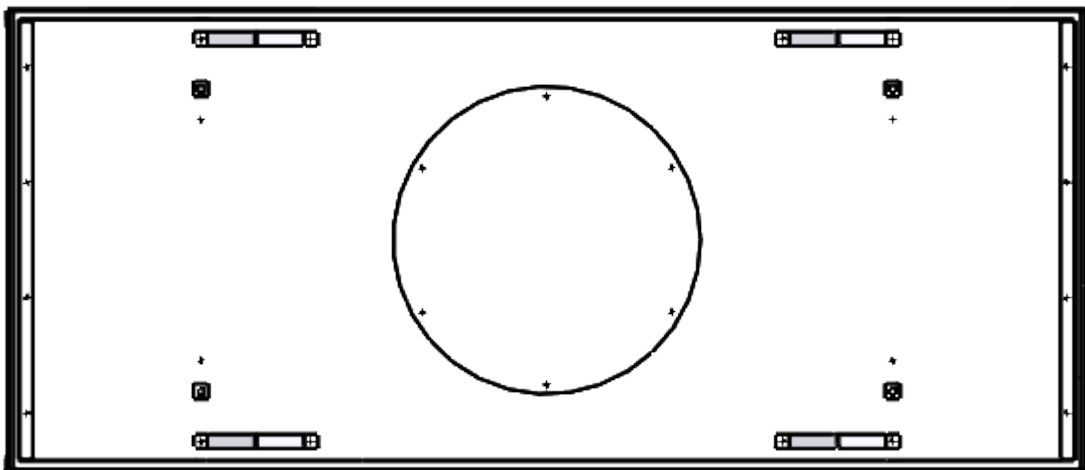
DRAWN BY: M.LEET	DATE: 4-19-23	SERIES NAME: OUTDOOR, OPEN HEARTH
ENGINEER: G.BUTLER	SCALE: N/A	SHEET: SHEET 1 OF 3
		DRAWING NUMBER: 4-ST-OD-LOH-SERIES
		REV: 3



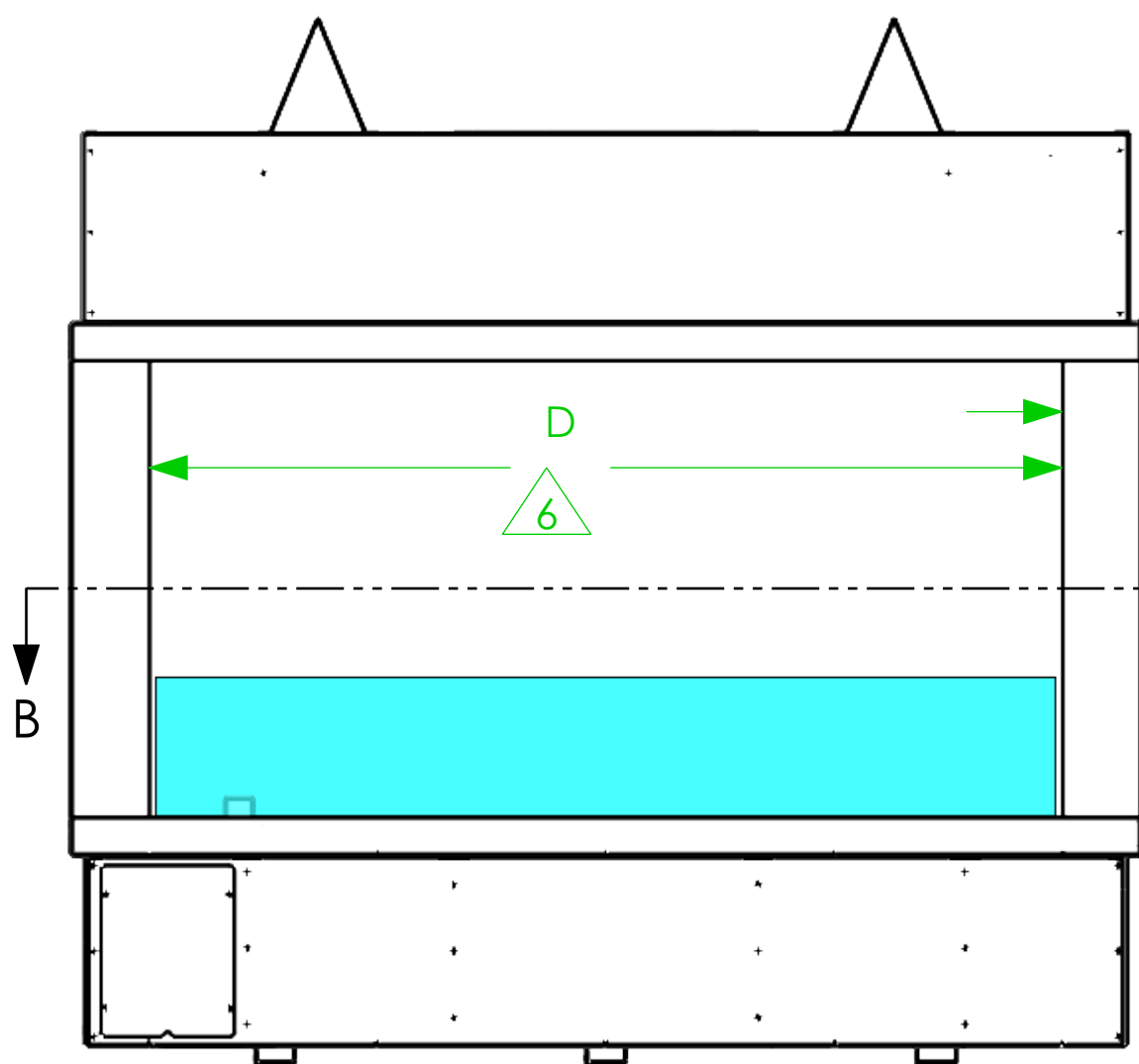
4-ST-24-OD-LOH



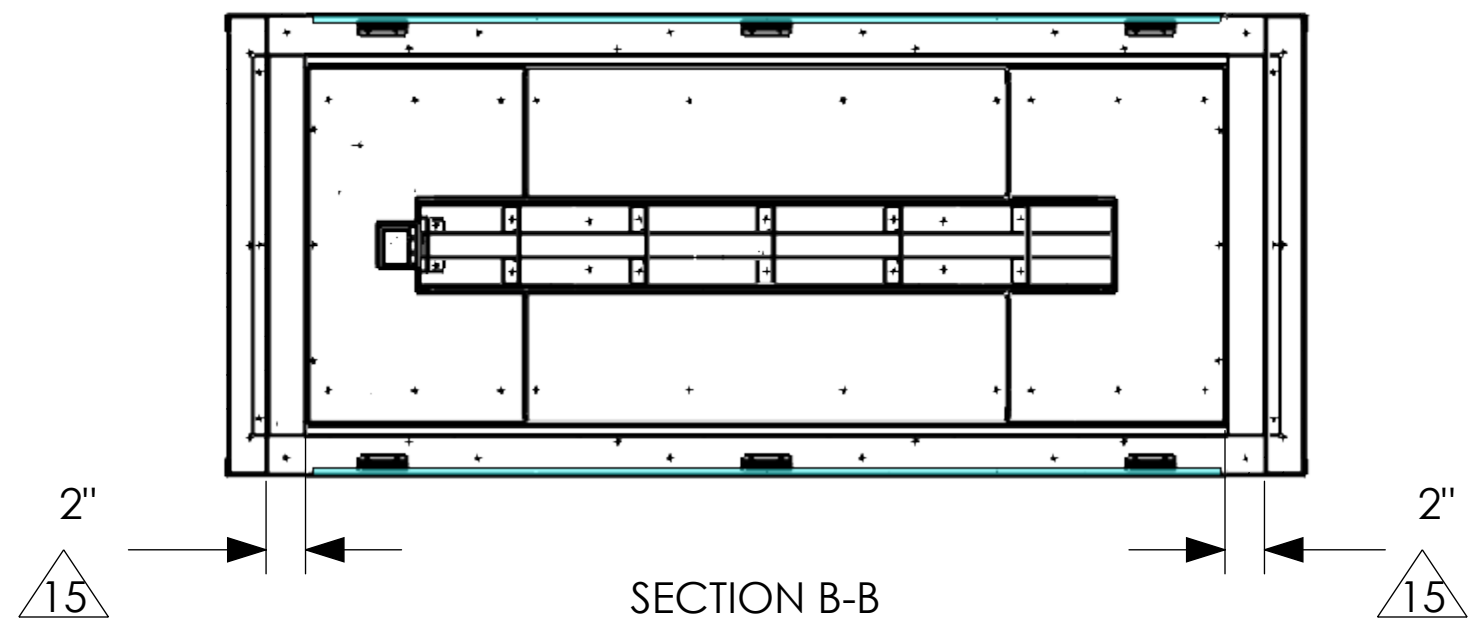
2X 2 1/8" RECESSED  
6



CUSTOM CONFIGURATION:  
VENT FREE, DECORATIVE LEDGE

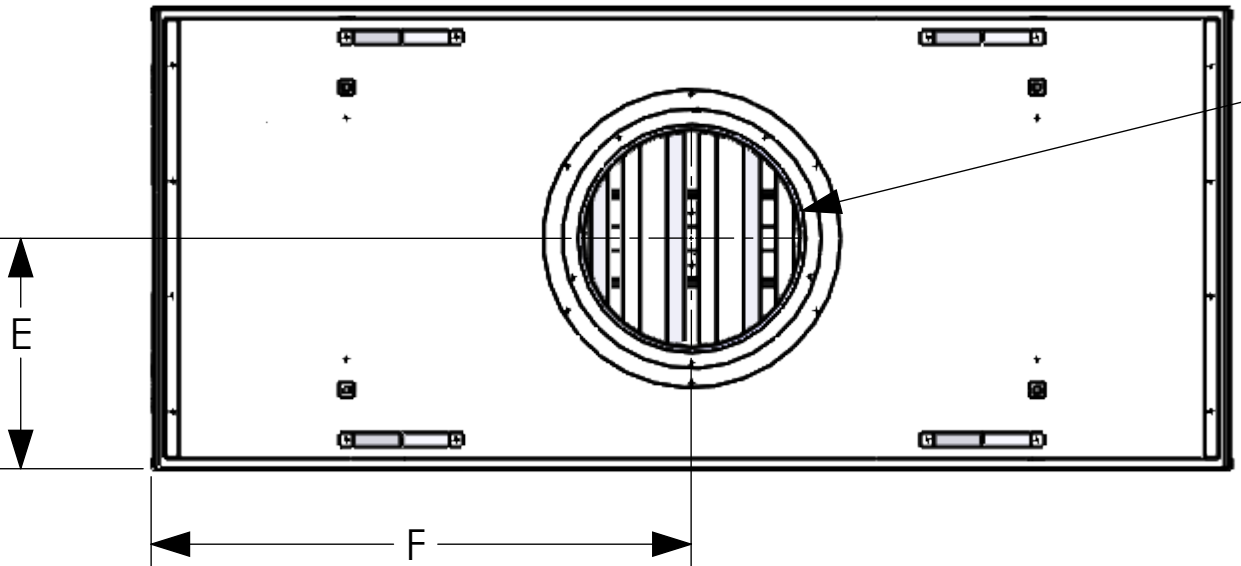


2X 4 1/8" RECESSED  
6

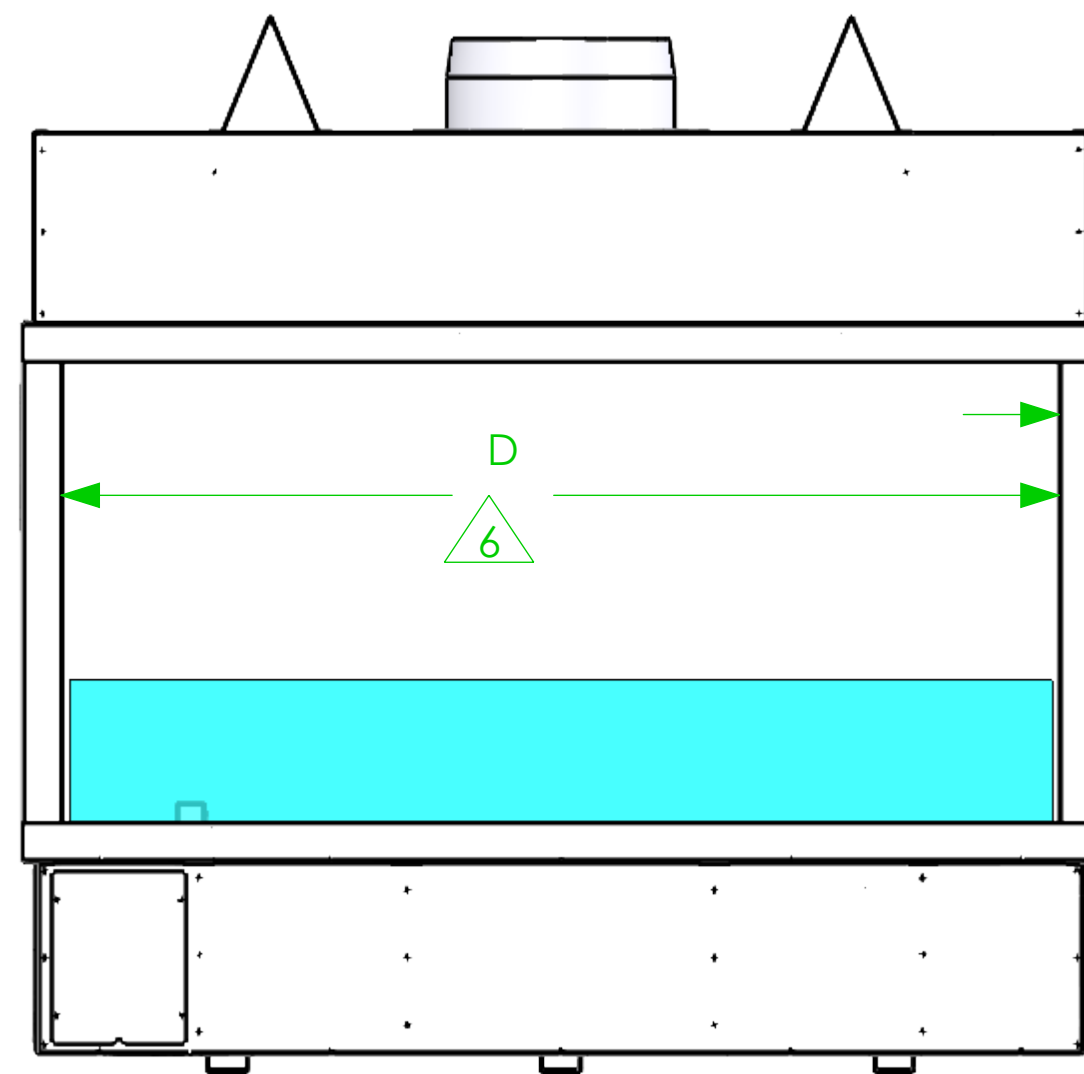


SECTION B-B

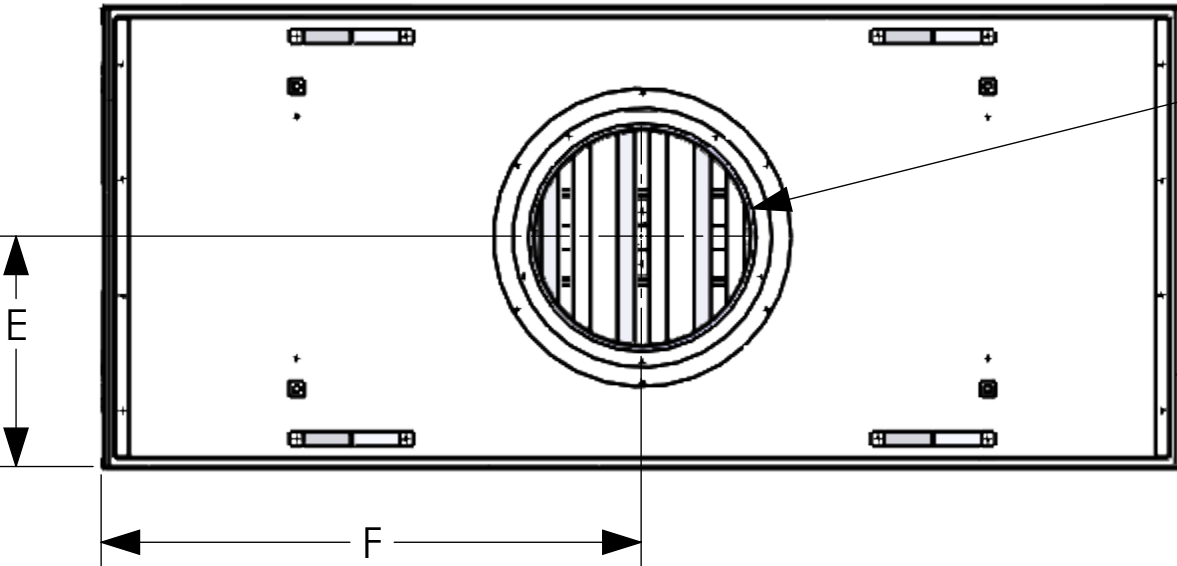
CUSTOM CONFIGURATION:  
NATURAL VENT, NO DECORATIVE LEDGE



Ø G

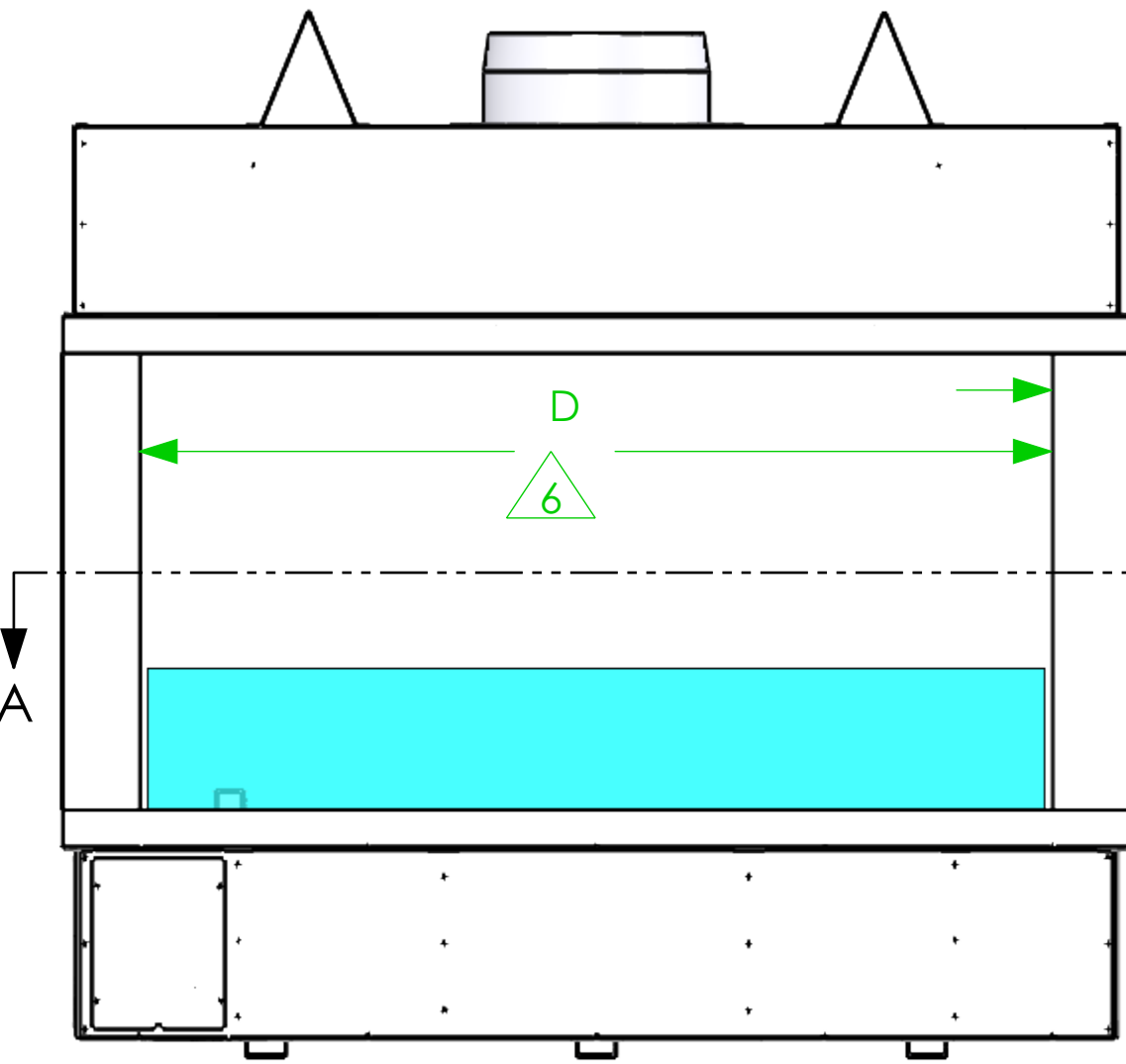


2X 2 1/8" RECESSED  
6

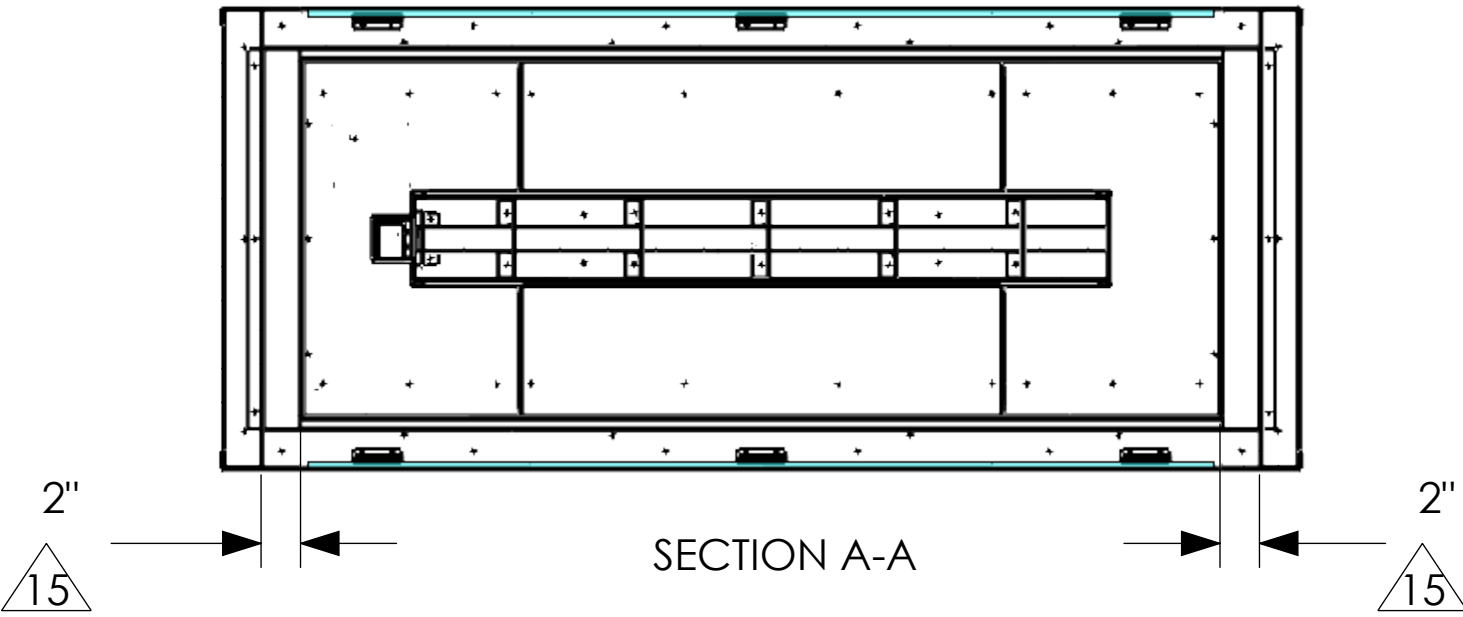


Ø G

CUSTOM CONFIGURATION:  
NATURAL VENT, DECORATIVE LEDGE



2X 4 1/8" RECESSED  
6



SECTION A-A

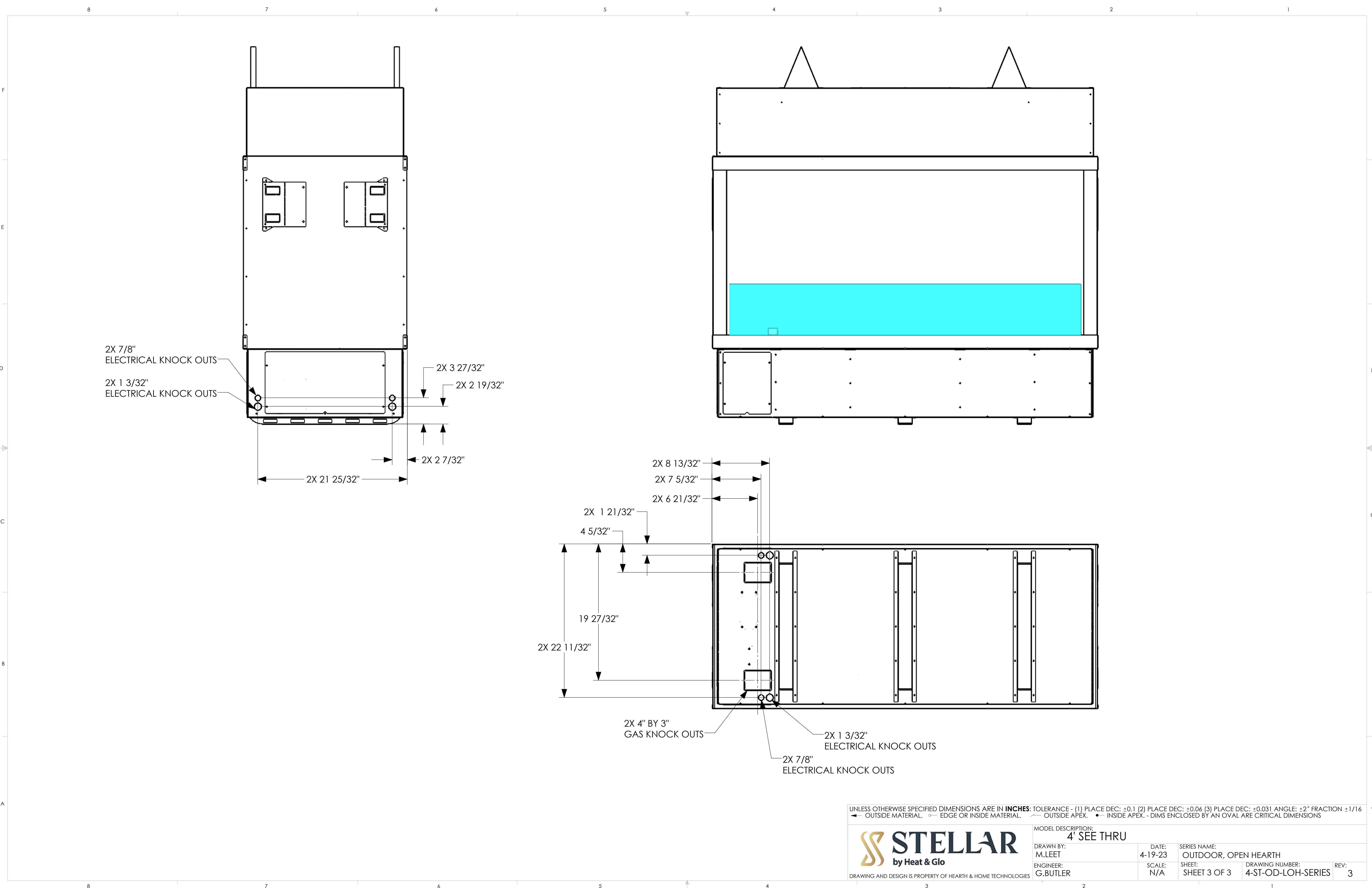
UNLESS OTHERWISE SPECIFIED DIMENSIONS ARE IN **INCHES**: TOLERANCE - (1) PLACE DEC: ±0.1 (2) PLACE DEC: ±0.06 (3) PLACE DEC: ±0.031 ANGLE: ±2° FRACTION ±1/16  
◄ OUTSIDE MATERIAL. ○ EDGE OR INSIDE MATERIAL. ◄ OUTSIDE APEX. ● INSIDE APEX. - DIMS ENCLOSED BY AN OVAL ARE CRITICAL DIMENSIONS




MODEL DESCRIPTION:  
4' SEE THRU

DRAWN BY: M.LEET	DATE: 4-19-23	SERIES NAME: OUTDOOR, OPEN HEARTH
ENGINEER: G.BUTLER	SCALE: N/A	SHEET: SHEET 2 OF 3
DRAWING NUMBER: 4-ST-OD-LOH-SERIES		REV: 3





UNLESS OTHERWISE SPECIFIED DIMENSIONS ARE IN **INCHES**: TOLERANCE - (1) PLACE DEC:  $\pm 0.1$  (2) PLACE DEC:  $\pm 0.06$  (3) PLACE DEC:  $\pm 0.031$  ANGLE:  $\pm 2^\circ$  FRACTION  $\pm 1/16$   
◄ OUTSIDE MATERIAL. ○ EDGE OR INSIDE MATERIAL. / OUTSIDE APEX. • INSIDE APEX. - DIMS ENCLOSED BY AN OVAL ARE CRITICAL DIMENSIONS

 DRAWING AND DESIGN IS PROPERTY OF HEARTH & HOME TECHNOLOGIES		MODEL DESCRIPTION: <b>4' SEE THRU</b>	
		DRAWN BY: M.LEET ENGINEER: G.BUTLER	DATE: 4-19-23 SCALE: N/A
		SERIES NAME: OUTDOOR, OPEN HEARTH	SHEET: SHEET 3 OF 3
		DRAWING NUMBER: 4-ST-OD-LOH-SERIES	REV: 3