

- NOTES:
- 1

NO COMBUSTIBLE MATERIAL WITHIN 8" OF THE TOP OF THE FIREPLACE.
COMBUSTIBLE MATERIAL SHALL NOT BE PLACED DIRECTLY ON THE SURFACE SHOWN.
- 2

ZERO CLEARANCE TO THE SIDES AND BACK OF THE FIREPLACE.
- 3

1" CLEARANCE TO B-VENT MUST BE MAINTAINED.
- 4

GAS PRESSURE LINE: **SEE TABLE FOR THE BTU MINIMUM** AT 7.0"/11.0" W.C. REQUIRED. **NG/LP**
POWER REQUIREMENT: 120 VAC, 5 AMP MAX DRAW.
- 5

STEEL 3" SURFACE MAY BE LEFT EXPOSED OR COVERED WITH COMBUSTIBLE FINISHING MATERIAL.
FASTENERS SHALL NOT PENETRATE THE 3" SURFACE.
- 6

COMBUSTIBLE MATERIAL SHALL NOT BE APPLIED TO THIS SURFACE SHOWN ABOVE THE 3" DIMENSION.
NON-COMBUSTIBLE MATERIAL MAY BE APPLIED TO SURFACE SHOWN PRIOR TO FINISHING MATERIAL.
IF FINISHING MATERIAL REQUIRES A STRUCTURAL BACKER.
- 7

THE 1/2" CLEARANCE TO COMBUSTIBLES MUST BE MAINTAINED ON THIS SURFACE.
IF THE 1/2" STAND OFFS ARE REMOVED, ONLY NON-COMBUSTIBLE MATERIAL SHALL BE INSTALLED
AGAINST THIS SURFACE. 1/2" INCH STAND OFFS ARE INCLUDED ON FACE OF FIREPLACE.
- 8

**DIMENSION SHOWN IS ALLOWABLE FINISHING DIMENSION.
FINISHING MATERIAL SHALL NOT OVERLAP DIMENSION SHOWN.**
- 9

FIREPLACE OPTIONS:
FIREPLACE SHALL HAVE A TRADITIONAL STYLE FLAME WITH OAK LOG SET.
FIREPLACE SHALL HAVE EMBER BED LIGHTING.
- 10

THE FIREPLACE WILL CONSUME THE AMOUNT OF **CFM** LISTED IN THE **TABLE**.
FIREPLACE SHALL HAVE A SOUND REDUCTION CHAMBER.
- 11

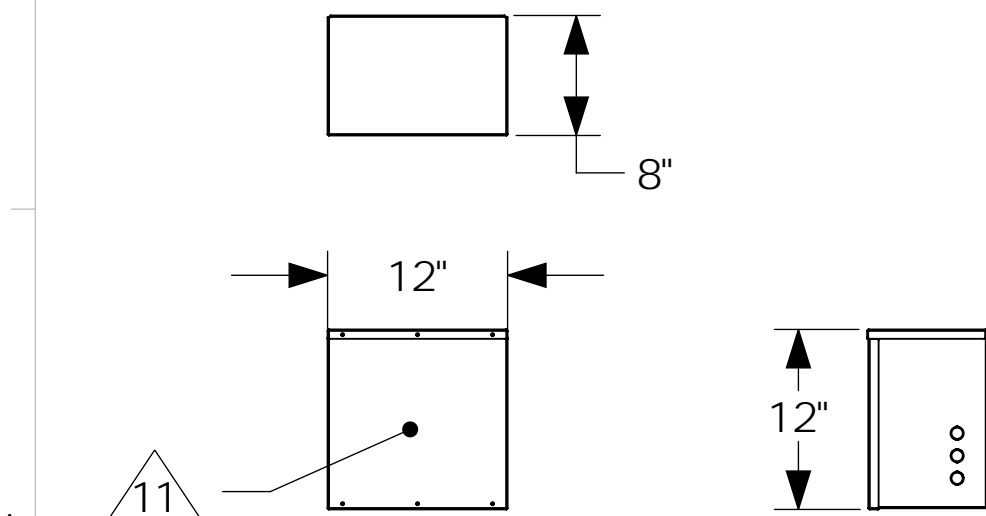
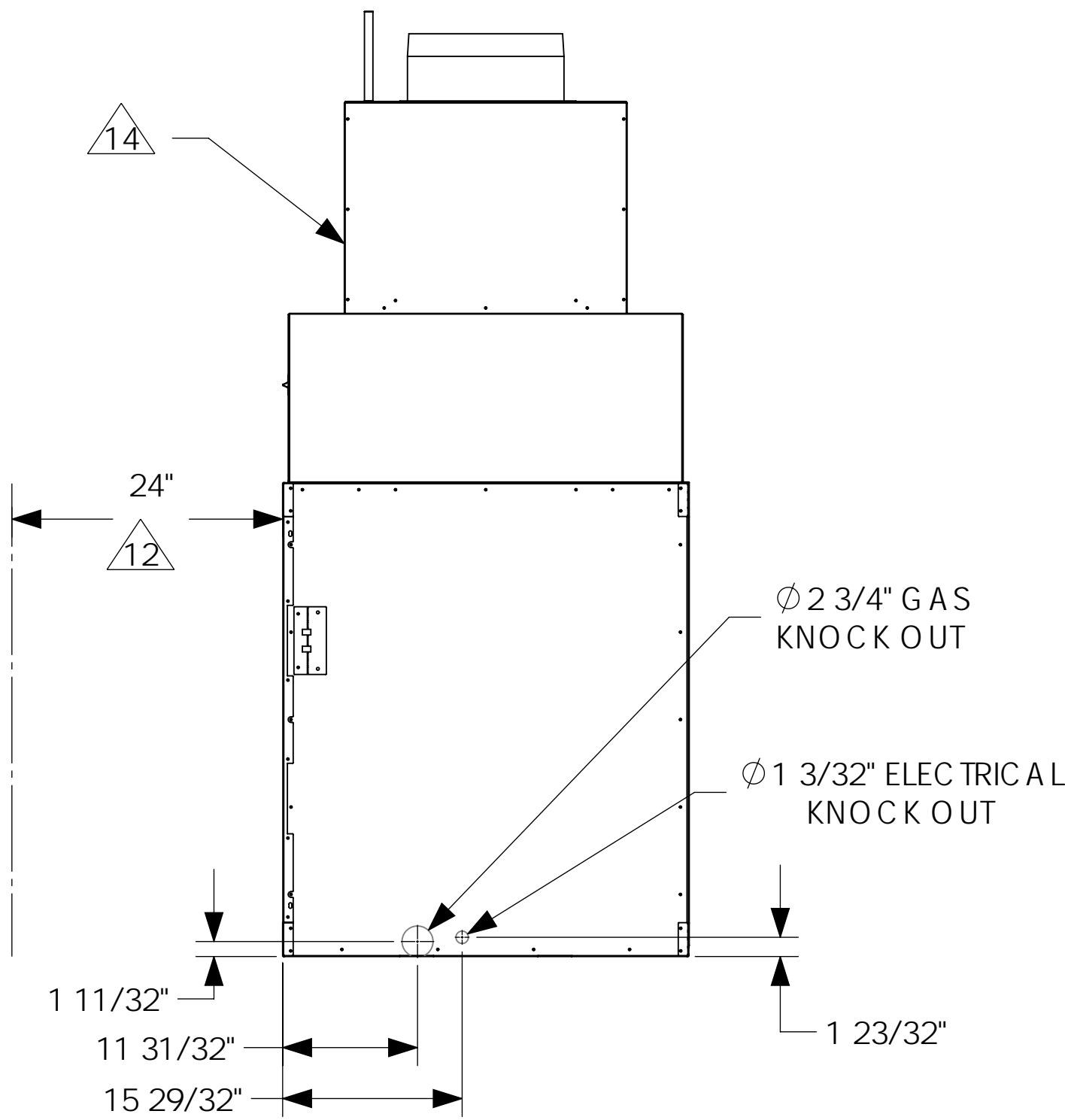
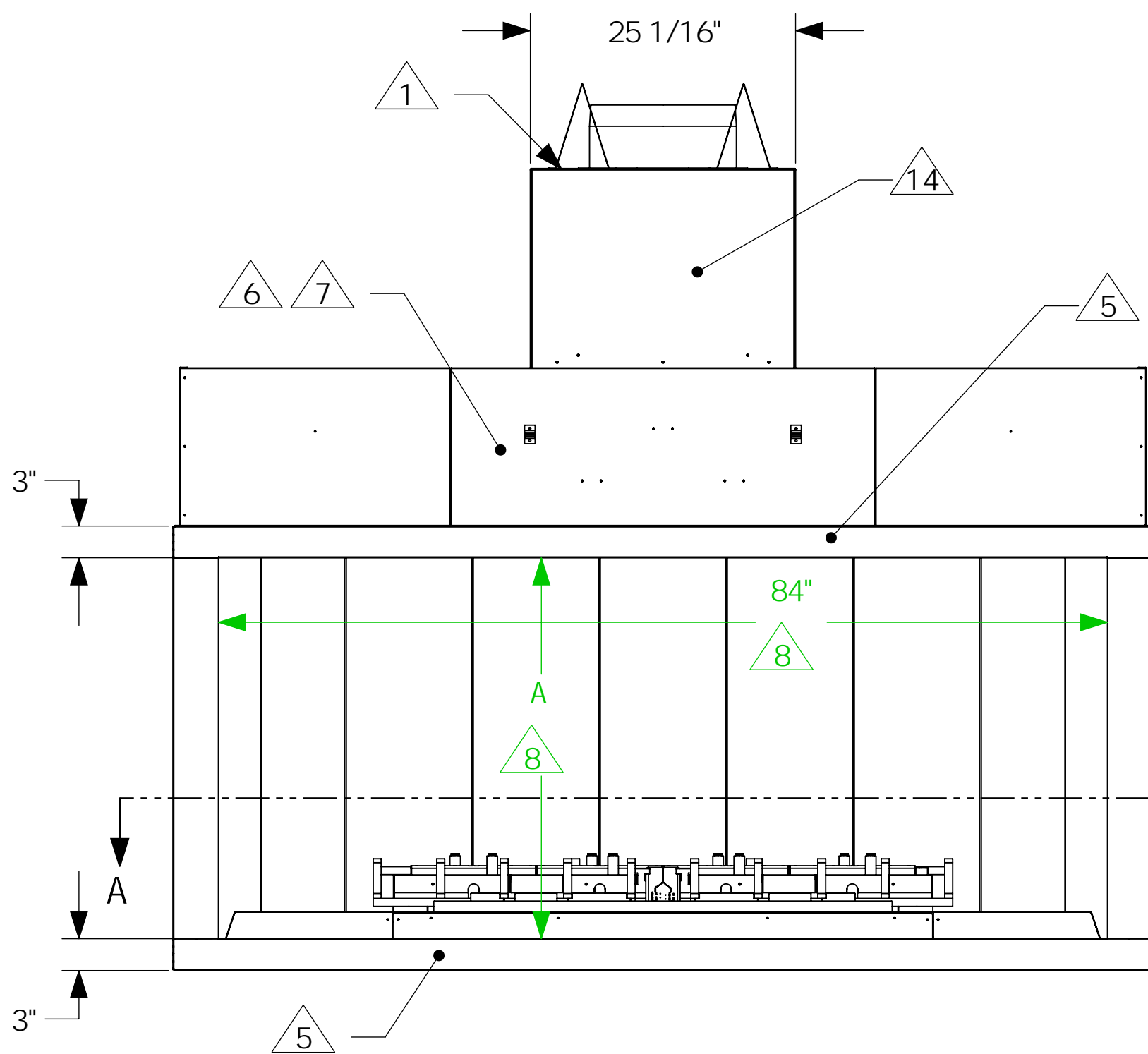
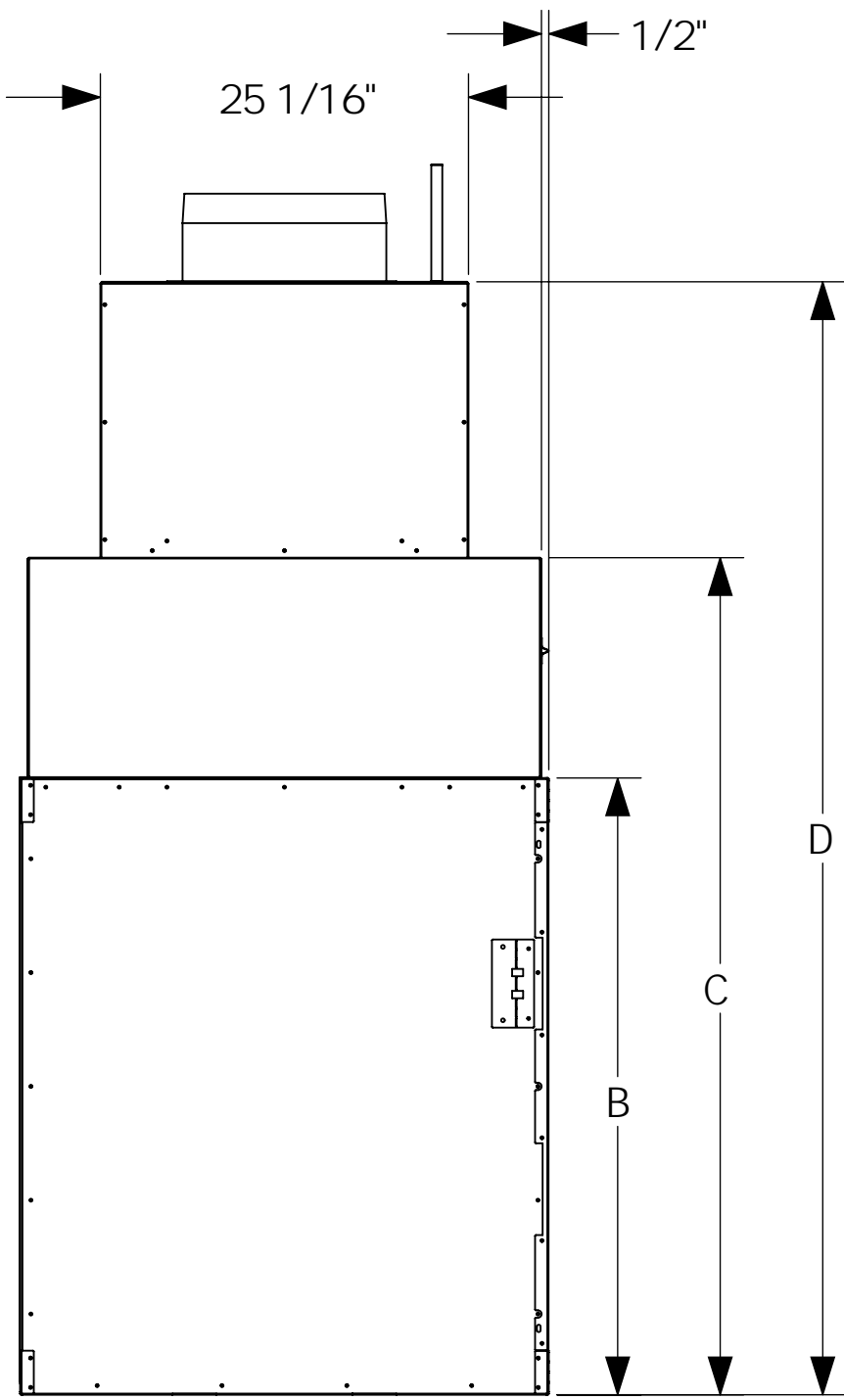
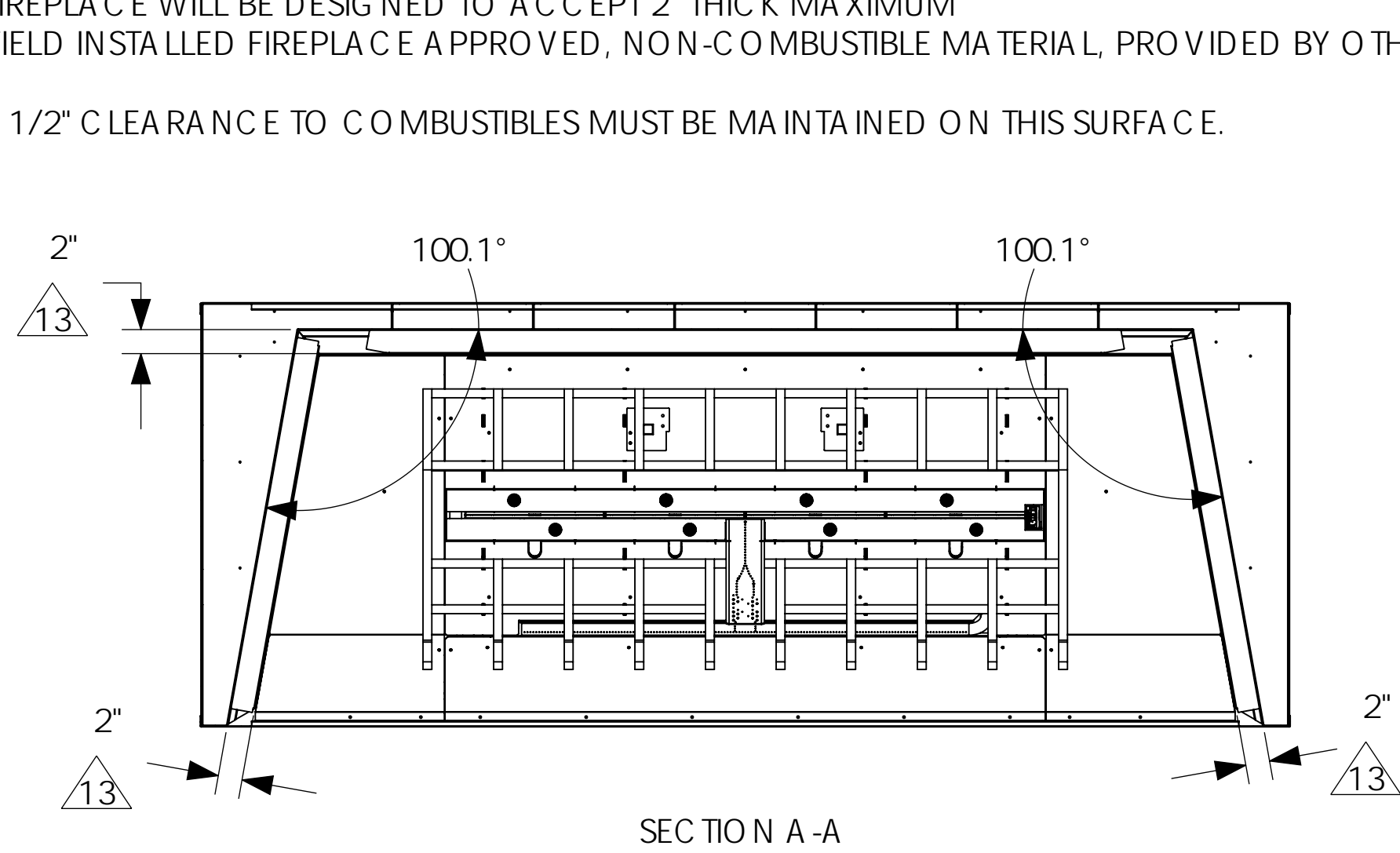
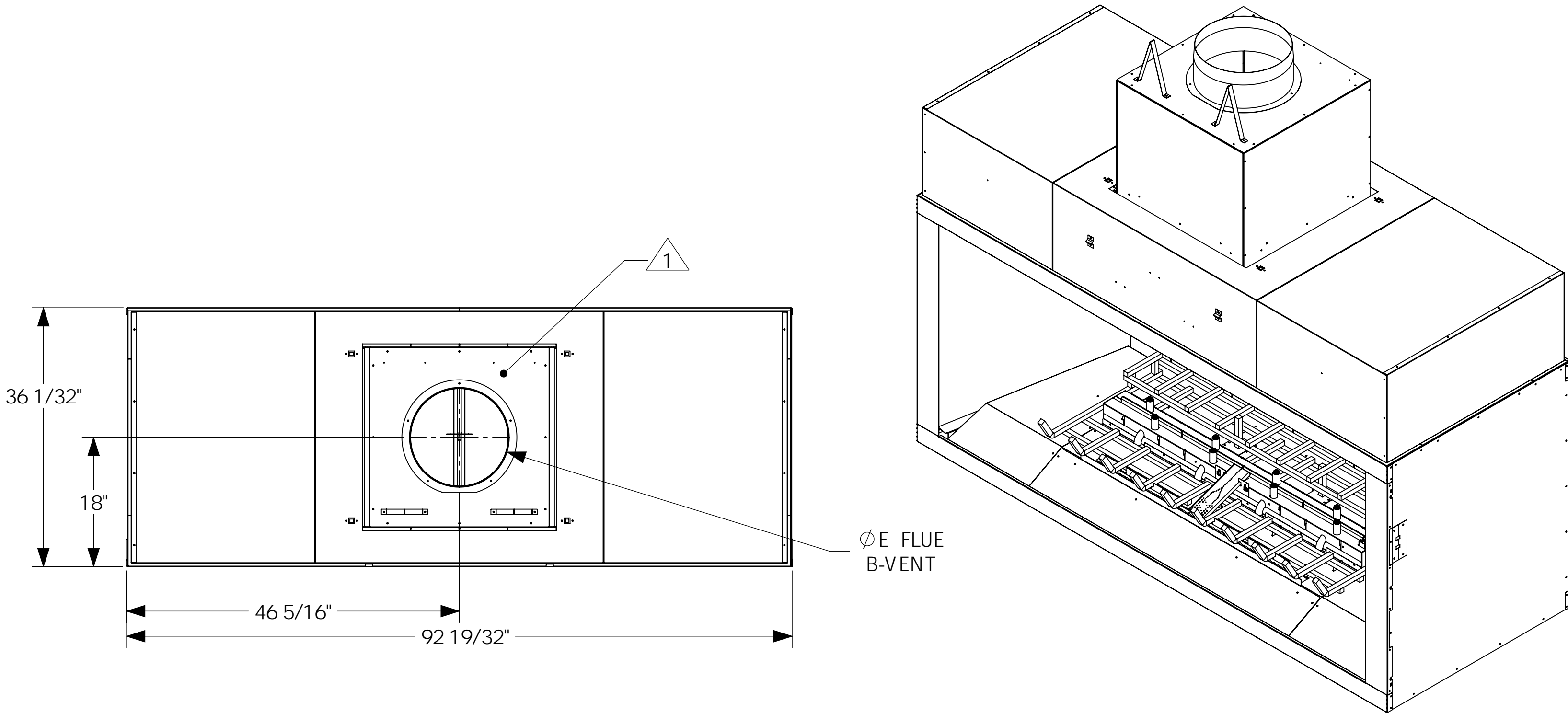
TETHERED BOX INCLUDES STANDARD LENGTH 30 FT WIRE HARNESS FOR TETHERED
COMPONENT LOCATION.
- 12

COMBUSTIBLE FURNITURE, CURTAINS AND/OR DECORATIONS ETC. MUST BE A
MINIMUM DISTANCE SHOWN FROM OPEN FACE OF FIREPLACE.
- 13

FIREPLACE WILL BE DESIGNED TO ACCEPT 2" THICK MAXIMUM
FIELD INSTALLED FIREPLACE APPROVED, NON-COMBUSTIBLE MATERIAL, PROVIDED BY OTHERS.
- 14

5 1/2" CLEARANCE TO COMBUSTIBLES MUST BE MAINTAINED ON THIS SURFACE.

HEIGHT OPTIONS PER MODEL					FLUE SIZE	NG BTU'S	LP BTU'S	CFM
MODEL NUMBER	DIM "A"	DIM "B"	DIM "C"	DIM "D"	DIM Ø "E"	NOTE 4	NOTE 4	NOTE 10
7-SS-36-TOH	36"	42"	57"	75 25/32"	Ø 14"	200,000	200,000	1195
7-SS-48-TOH	48"	54"	69"	87 25/32"	Ø 16"	200,000	200,000	1580



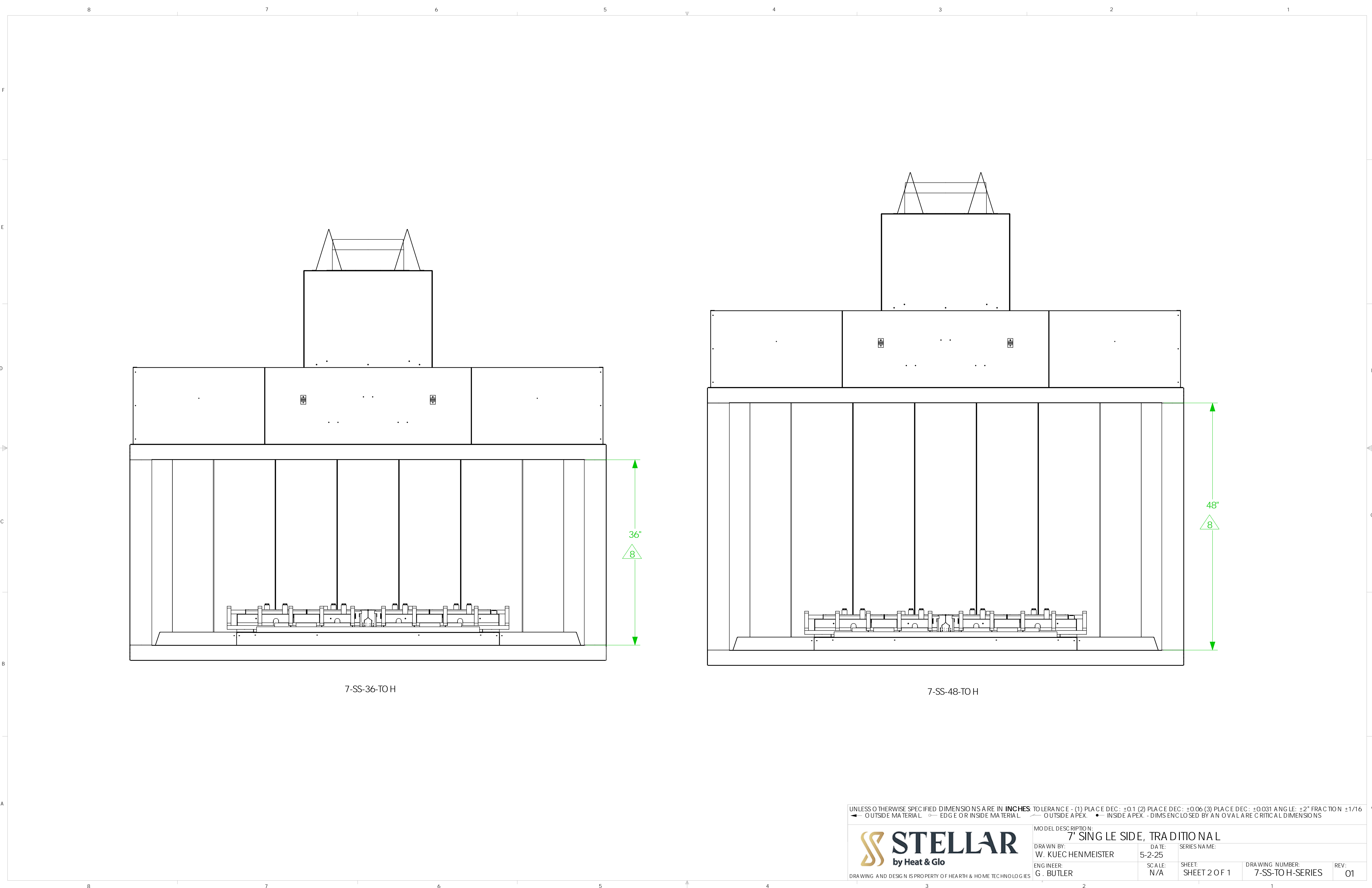
REV	REVISIONS	DATE	DRFT	ENG
01	PRELIMINARY RELEASE	5-2-25	WRK	RB

UNLESS OTHERWISE SPECIFIED DIMENSIONS ARE IN **INCHES** TOLERANCE - (1) PLACE DEC: ±0.1 (2) PLACE DEC: ±0.06 (3) PLACE DEC: ±0.031 ANGLE: ±2° FRACTION ±1/16
◄ OUTSIDE MATERIAL ◉ EDGE OR INSIDE MATERIAL ◄ OUTSIDE APEX • INSIDE APEX - DIMS ENCLOSED BY AN OVAL ARE CRITICAL DIMENSIONS

DRAWING AND DESIGN IS PROPERTY OF HEARTH & HOME TECHNOLOGIES

MODEL DESCRIPTION:
7' SINGLE SIDE, TRADITIONAL

DRAWN BY: W. KUECHENMEISTER	DATE: 5-2-25	SERIES NAME:
ENGINEER: G. BUTLER	SCALE: N/A	SHEET: SHEET 1 OF 1
DRAWING NUMBER: 7-SS-TOH-SERIES		REV: 01



7-SS-36-TO H

7-SS-48-TO H

UNLESS OTHERWISE SPECIFIED DIMENSIONS ARE IN **INCHES** TOLERANCE - (1) PLACE DEC: ± 0.1 (2) PLACE DEC: ± 0.06 (3) PLACE DEC: ± 0.031 ANGLE: $\pm 2^\circ$ FRACTION $\pm 1/16$
◄ OUTSIDE MATERIAL ◉ EDGE OR INSIDE MATERIAL ◄ OUTSIDE APEX • INSIDE APEX - DIMS ENCLOSED BY AN OVAL ARE CRITICAL DIMENSIONS

 DRAWING AND DESIGN IS PROPERTY OF HEARTH & HOME TECHNOLOGIES		MODEL DESCRIPTION: 7' SINGLE SIDE, TRADITIONAL			
		DRAWN BY: W. KUECHENMEISTER	DATE: 5-2-25	SERIES NAME:	
ENGINEER: G. BUTLER		SCALE: N/A	SHEET: SHEET 2 OF 1	DRAWING NUMBER: 7-SS-TO H-SERIES	REV: 01