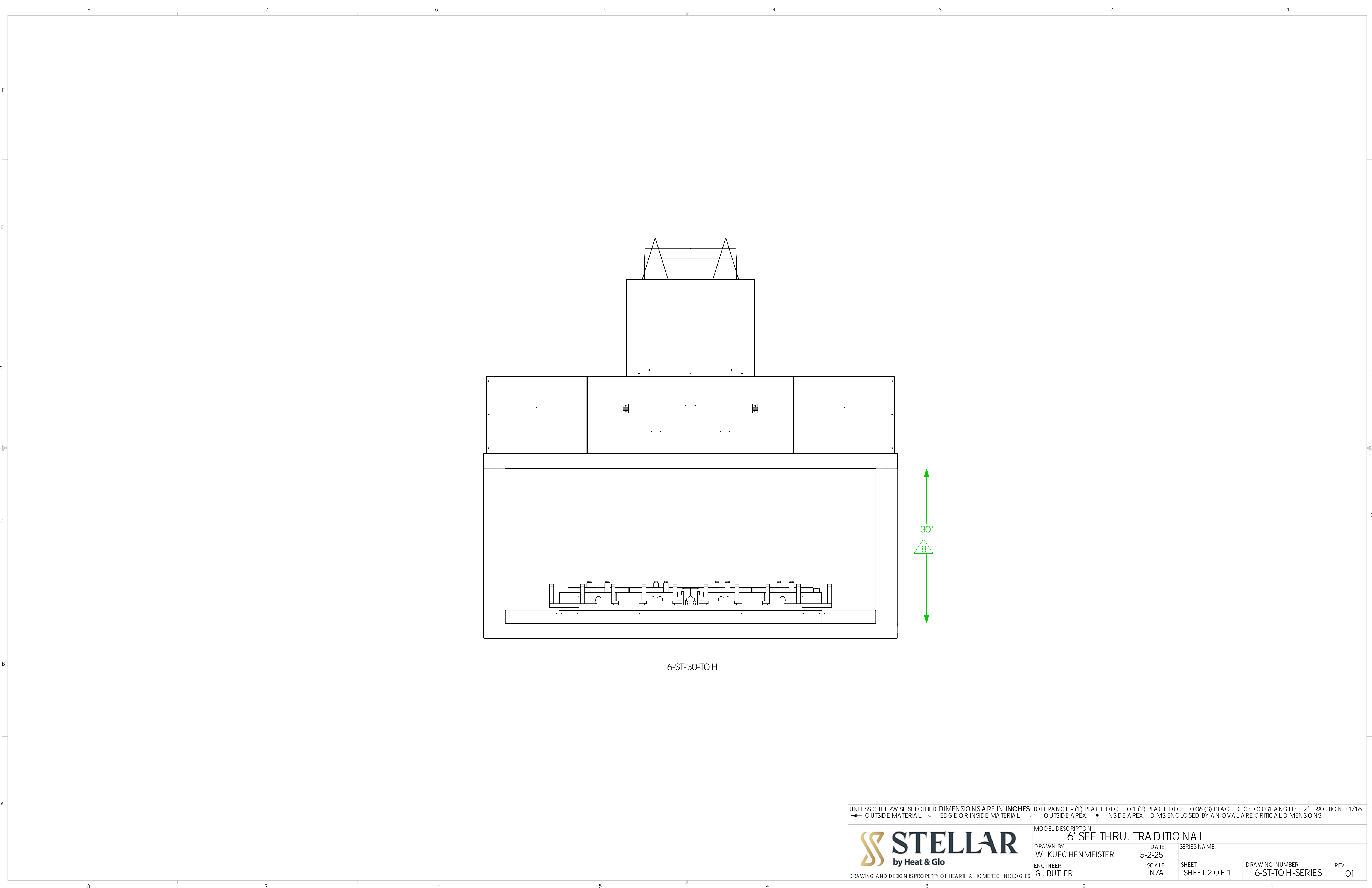



DRAWING AND DESIGN IS PROPERTY OF HEARTH & HOME TECHNOLOGIES



6-ST-30-TO H

UNLESS OTHERWISE SPECIFIED DIMENSIONS ARE IN **INCHES** TOLERANCE - (1) PLACE DEC: ±0.1 (2) PLACE DEC: ±0.06 (3) PLACE DEC: ±0.031 ANGLE: ±2° FRACTION ±1/16
◄ OUTSIDE MATERIAL ◉ EDGE OR INSIDE MATERIAL ◌ OUTSIDE APEX ● INSIDE APEX - DIMS ENCLOSED BY AN OVAL ARE CRITICAL DIMENSIONS



DRAWING AND DESIGN IS PROPERTY OF HEARTH & HOME TECHNOLOGIES

| | | | | |
|---|--|-----------------|------------------------|--|
| MODEL DESCRIPTION: 6' SEE THRU, TRADITIONAL | | | | |
| DRAWN BY: W. KUECHENMEISTER | | DATE: 5-2-25 | SERIES NAME: | |
| ENGINEER: G. BUTLER | | SCALE: N/A | SHEET: SHEET 2 OF 1 | DRAWING NUMBER: 6-ST-TO-H-SERIES |
| | | | | REV: 01 |