

- NOTES:
- 1

NO COMBUSTIBLE MATERIAL WITHIN 8" OF THE TOP OF THE FIREPLACE. COMBUSTIBLE MATERIAL SHALL NOT BE PLACED DIRECTLY ON THE SURFACE SHOWN.
- 2

ZERO CLEARANCE TO THE SIDES AND BACK OF THE FIREPLACE.
- 3

1" CLEARANCE TO B-VENT MUST BE MAINTAINED.
- 4

GAS PRESSURE LINE: **SEE TABLE FOR THE BTU MINIMUM** AT 7.0"/11.0" W.C. REQUIRED. **NG/LP**
POWER REQUIREMENT: 120 VAC, 5 AMP MAX DRAW.
- 5

STEEL 3" SURFACE MAY BE LEFT EXPOSED OR COVERED WITH COMBUSTIBLE FINISHING MATERIAL. FASTENERS SHALL NOT PENETRATE THE 3" SURFACE.
- 6

COMBUSTIBLE MATERIAL SHALL NOT BE APPLIED TO THIS SURFACE SHOWN ABOVE THE 3" DIMENSION. NON-COMBUSTIBLE MATERIAL MAY BE APPLIED TO SURFACE SHOWN PRIOR TO FINISHING MATERIAL. IF FINISHING MATERIAL REQUIRES A STRUCTURAL BACKER.
- 7

THE 1/2" CLEARANCE TO COMBUSTIBLES MUST BE MAINTAINED ON THIS SURFACE. IF THE 1/2" STAND-OFFS ARE REMOVED, ONLY NON-COMBUSTIBLE MATERIAL SHALL BE INSTALLED AGAINST THIS SURFACE. 1/2" INCH STAND-OFFS ARE INCLUDED ON FACE OF FIREPLACE.
- 8

DIMENSION SHOWN IS ALLOWABLE FINISHING DIMENSION. FINISHING MATERIAL SHALL NOT OVERLAP DIMENSION SHOWN.
- 9

FIREPLACE OPTIONS:
FIREPLACE SHALL HAVE A TRADITIONAL STYLE FLAME WITH OAK LOG SET.
FIREPLACE SHALL HAVE EMBER BED LIGHTING.
- 10

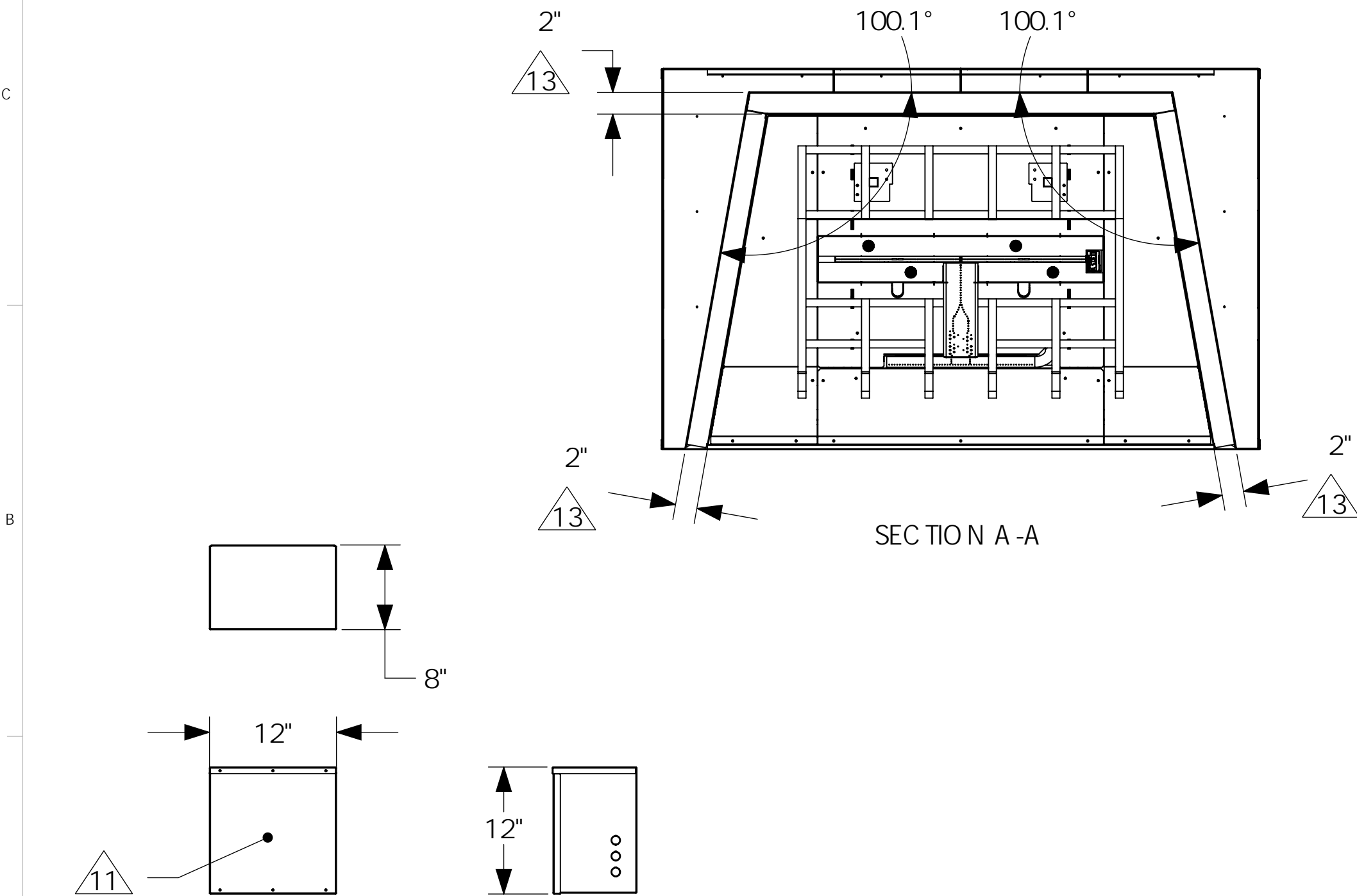
THE FIREPLACE WILL CONSUME THE AMOUNT OF **CFM** LISTED IN THE **TABLE**.
FIREPLACE SHALL HAVE A SOUND REDUCTION CHAMBER.
- 11

TETHERED BOX INCLUDES STANDARD LENGTH 30 FT WIRE HARNESS FOR TETHERED COMPONENT LOCATION.
- 12

COMBUSTIBLE FURNITURE, CURTAINS AND/OR DECORATIONS ETC. MUST BE A MINIMUM DISTANCE SHOWN FROM OPEN FACE OF FIREPLACE.
- 13

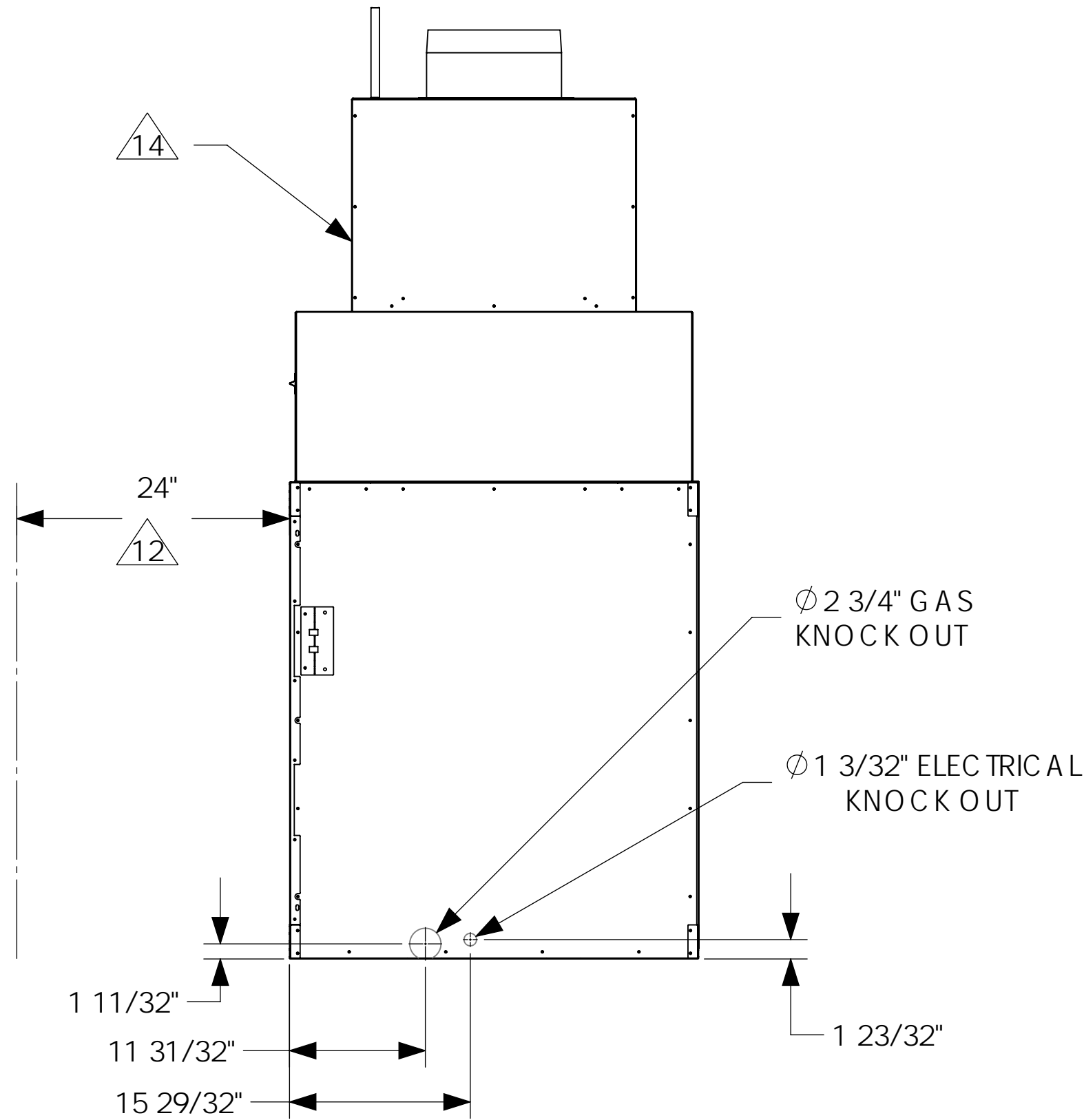
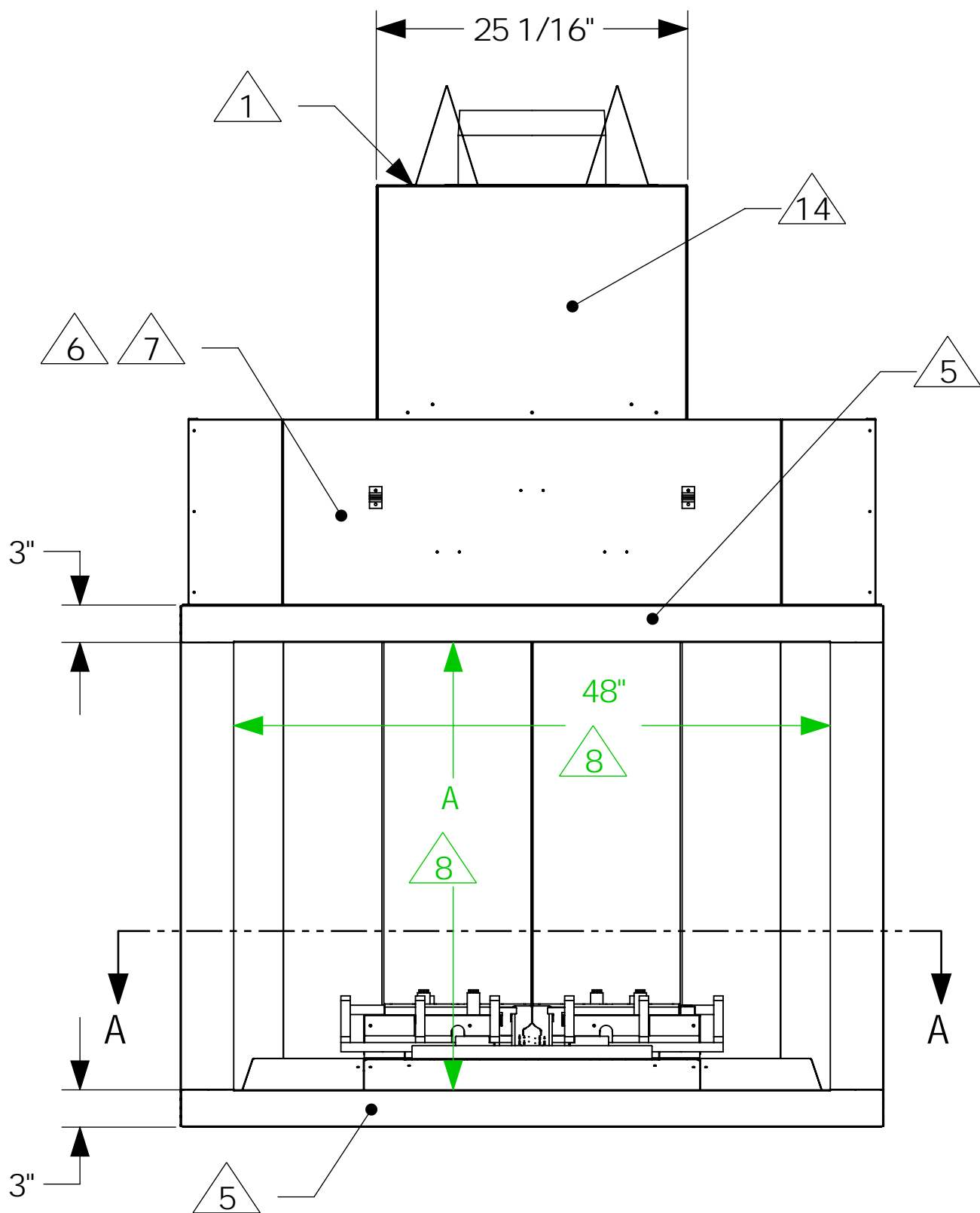
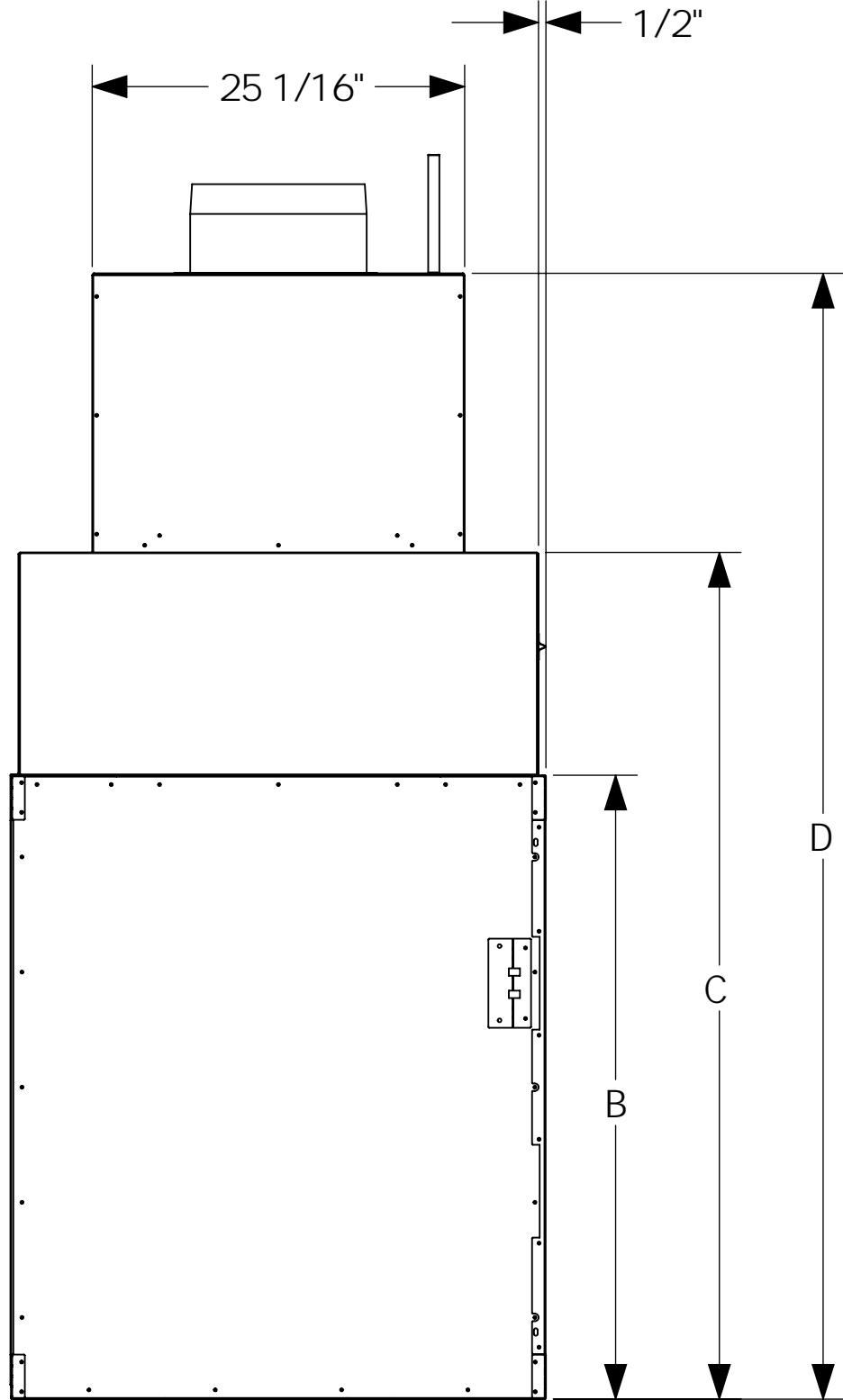
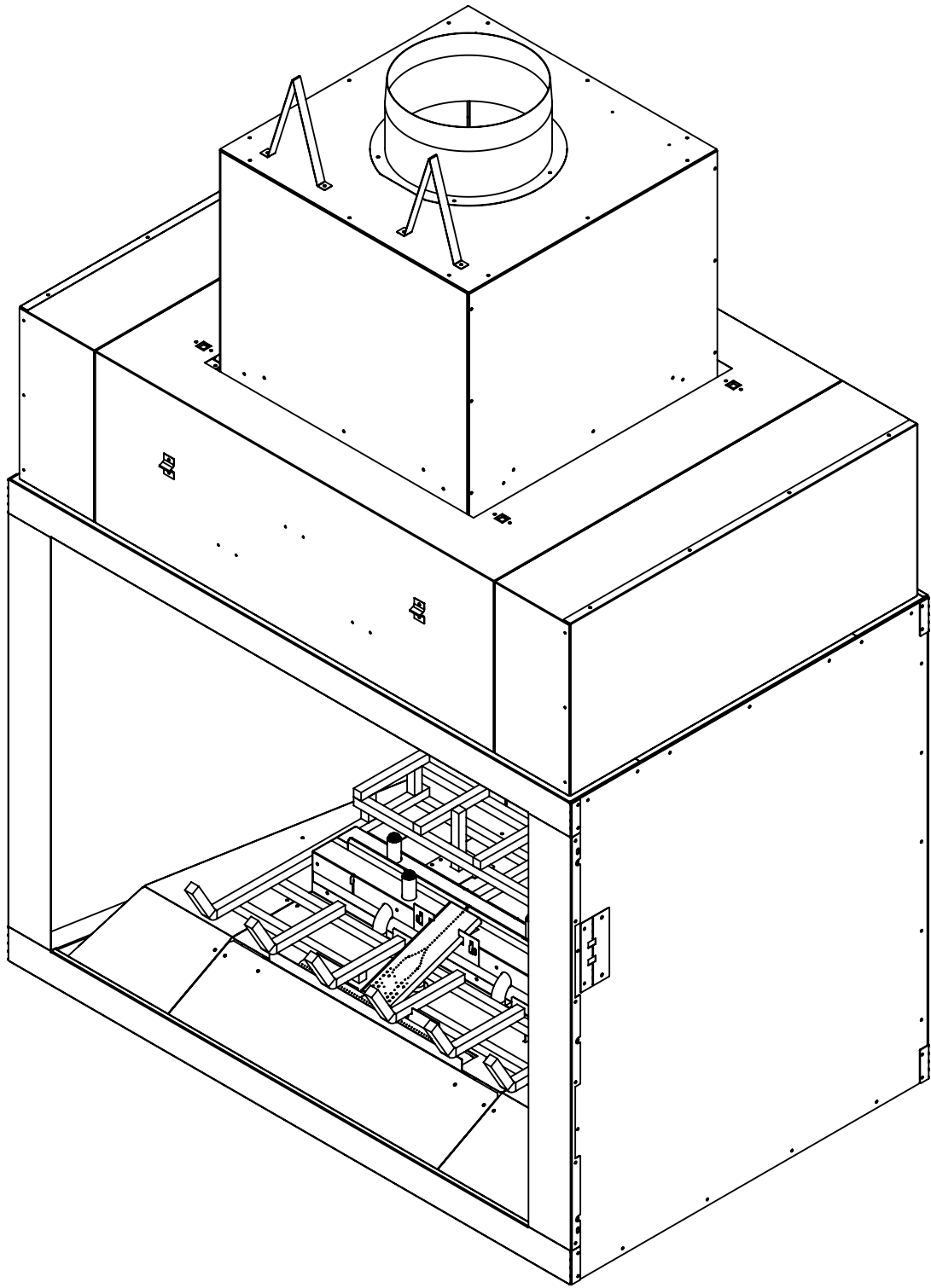
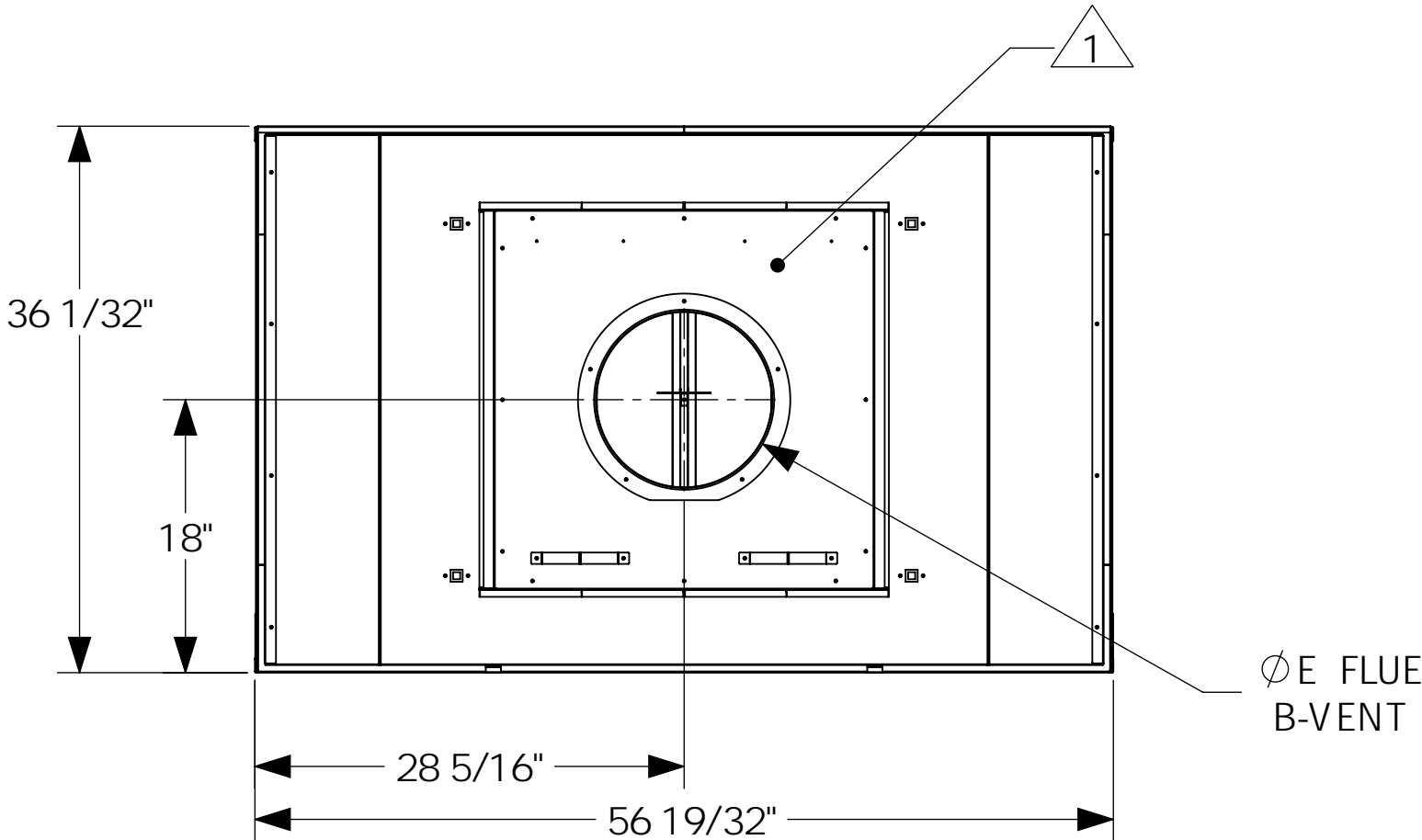
FIREPLACE WILL BE DESIGNED TO ACCEPT 2" THICK MAXIMUM FIELD INSTALLED FIREPLACE APPROVED, NON-COMBUSTIBLE MATERIAL, PROVIDED BY OTHERS.
- 14

5 1/2" CLEARANCE TO COMBUSTIBLES MUST BE MAINTAINED ON THIS SURFACE.



REV	REVISIONS	DATE	DRFT	ENG
01	PRELIMINARY RELEASE	4-48-25	WRK	RB

HEIGHT OPTIONS PER MODEL					FLUE SIZE	NG BTU'S	LP BTU'S	CFM
MODEL NUMBER	DIM "A"	DIM "B"	DIM "C"	DIM "D"	DIM Ø "E"	NOTE 4	NOTE 4	NOTE 10
4-SS-36-TOH	36"	42"	57"	75 25/32"	Ø 12"	108,000	102,000	700
4-SS-48-TOH	48"	54"	69"	87 25/32"	Ø 12"	108,000	102,000	920



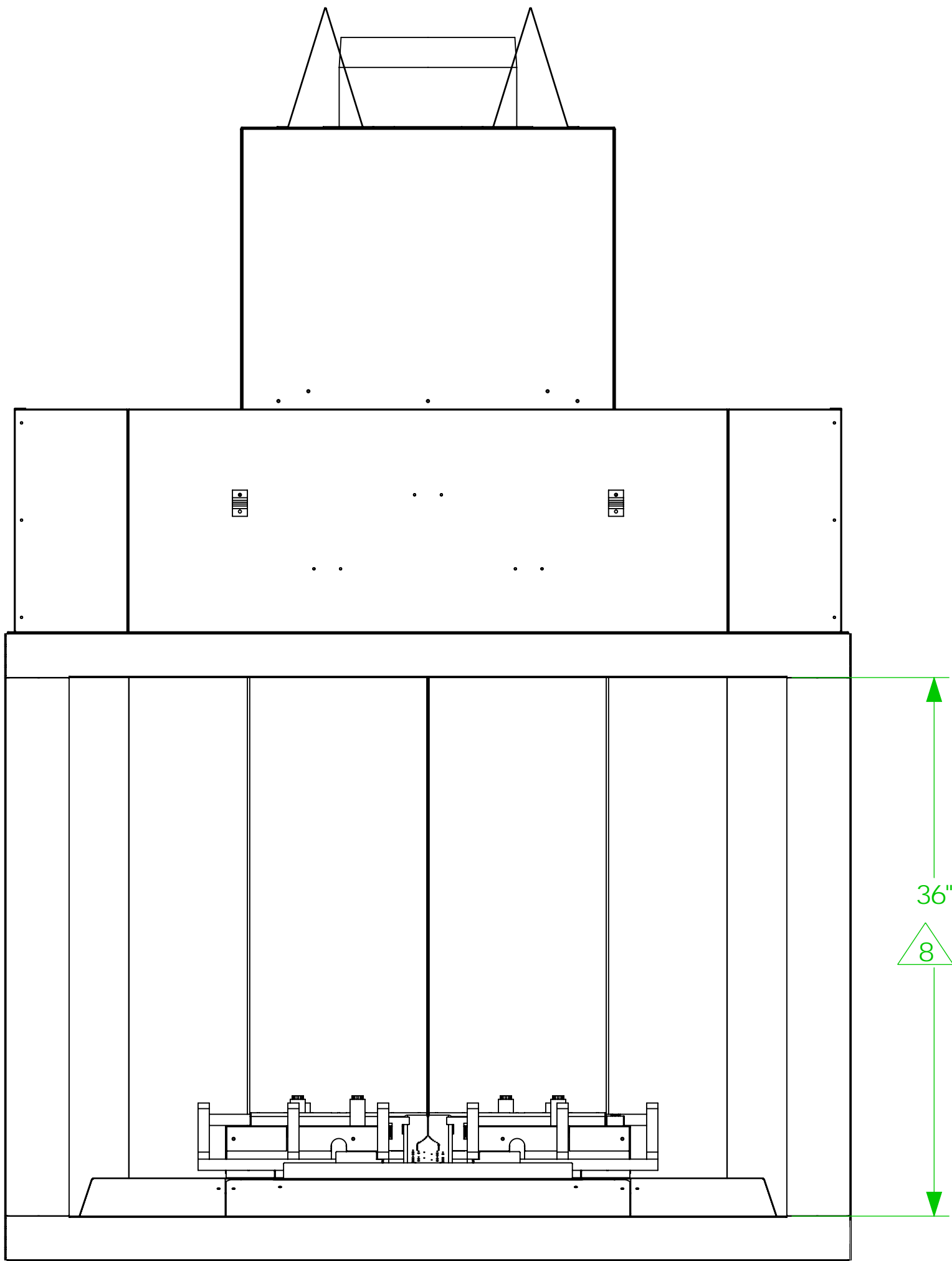
UNLESS OTHERWISE SPECIFIED DIMENSIONS ARE IN **INCHES** TOLERANCE - (1) PLACE DEC: ±0.1 (2) PLACE DEC: ±0.06 (3) PLACE DEC: ±0.031 ANGLE: ±2° FRACTION ±1/16
◄ OUTSIDE MATERIAL ◉ EDGE OR INSIDE MATERIAL ◄ OUTSIDE APEX • INSIDE APEX - DIMS ENCLOSED BY AN OVAL ARE CRITICAL DIMENSIONS



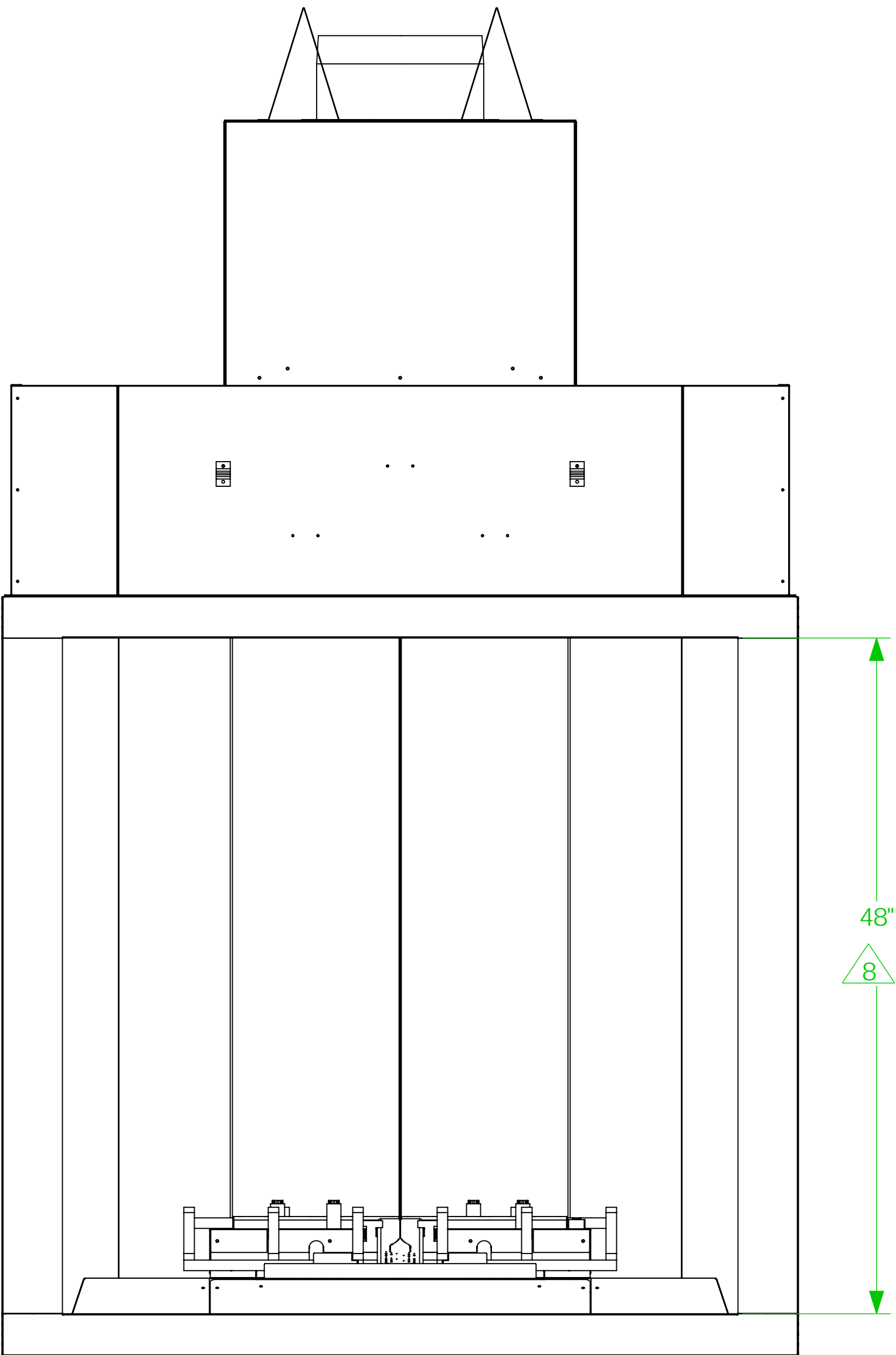
DRAWING AND DESIGN IS PROPERTY OF HEARTH & HOME TECHNOLOGIES

MODEL DESCRIPTION:
4" SINGLE SIDE, TRADITIONAL

DRAWN BY: W. KUECHENMEISTER	DATE: 3-31-25	SERIES NAME:
ENGINEER: G. BUTLER	SCALE: N/A	SHEET: SHEET 1 OF 1
DRAWING NUMBER: 4-SS-TOH-SERIES		REV: 01



4-SS-36-TO H



4-SS-48-TO H

UNLESS OTHERWISE SPECIFIED DIMENSIONS ARE IN **INCHES** TOLERANCE - (1) PLACE DEC: ±0.1 (2) PLACE DEC: ±0.06 (3) PLACE DEC: ±0.031 ANGLE: ±2° FRACTION ±1/16
◄ OUTSIDE MATERIAL ◯ EDGE OR INSIDE MATERIAL ◄ OUTSIDE APEX • INSIDE APEX - DIMS ENCLOSED BY AN OVAL ARE CRITICAL DIMENSIONS

 DRAWING AND DESIGN IS PROPERTY OF HEARTH & HOME TECHNOLOGIES		MODEL DESCRIPTION: 4' SINGLE SIDE, TRADITIONAL			
		DRAWN BY: W. KUECHENMEISTER	DATE: 3-31-25	SERIES NAME:	
ENGINEER: G. BUTLER		SCALE: N/A	SHEET: SHEET 2 OF 1	DRAWING NUMBER: 4-SS-TO-H-SERIES	REV: 01