

PREMIER

WOOD-BURNING FIREPLACES

HEAT & GLO®



TRADITION
YOU CAN FEEL



WOOD FIREPLACES

Keep the home fires burning with an authentic indoor wood fireplace that costs much less than a site-built masonry fireplace. Wood burners appreciate the radiant heat and efficiency that delivers the most from every cord.

PIONEER III ^A

With fuel-saving efficiency and the effortless operation of Smart Burn Technology, the Pioneer III wood-burning fireplace delivers generous heat in a beautiful-looking fire. You can add up to two heat zone ducts to send that heat into other rooms, making this EPA-approved fireplace a whole house heater.

PIONEER II ^B

Enjoy hassle-free performance that's ideal for everyday use. The efficiency of the EPA-approved Pioneer II supplies long burn times with nonstop rolling flames. Never has it been easier to set the mood for relaxing or just keeping your home or cabin toasty warm.

NORTHSTAR ^C

The super-efficient Northstar exceeds EPA-certified standards as perhaps the cleanest wood-burning fireplace on the planet—ideal where conventional wood fireplaces are banned. Warm up to 10 hours from each wood load.



RUTHERFORD D

Bold performance and a custom-built masonry appearance. With the biggest viewing area in its class—available in three sizes, up to 50” wide—in a tall firebox, the Rutherford indoor wood fireplace commands attention. And, it costs far less than custom-built masonry fireplace.

EXCLAIM E

Enjoy a beautiful wood-burning fireplace with our attractively priced Exclaim. Bring the ambiance of a crackling fire into your home with spacious viewing up to 50” and a choice of brick interiors. Choose square or contoured doors to complete your look. Available in three sizes.

ROYAL HEARTH F

It's easier to relax with the Royal Hearth in the room. An easy-to-operate damper, helpful ash lip and invisible smoke shield add convenience to tradition. Available in two sizes.



PIONEER III FRONT OPTIONS



FORGED ARCH FRONT



MISSION ARCH FRONT

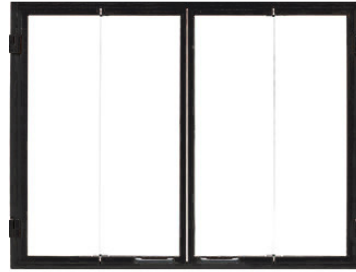


MISSION RECTANGULAR FRONT

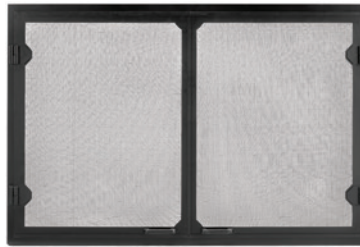


RUTHERFORD ANDIRONS
Standard cast iron andirons help you build bigger, bolder fires and add style to your firebox.

DOOR OPTIONS



BI-FOLD GLASS DOORS Available in black for Rutherford models only.



GRAND VISTA MESH DOORS Available in black for Exclaim model only.



BI-FOLD GLASS DOORS Available in black or stainless steel trim. Not available for Rutherford models.

DOOR FINISHES



INTERIOR OPTIONS

RUTHERFORD Firebrick Yellow



TRADITIONAL



HERRINGBONE

Rutherford and Exclaim models come with your choice of traditional or herringbone refractories.

RUTHERFORD Natural Gray



TRADITIONAL



HERRINGBONE

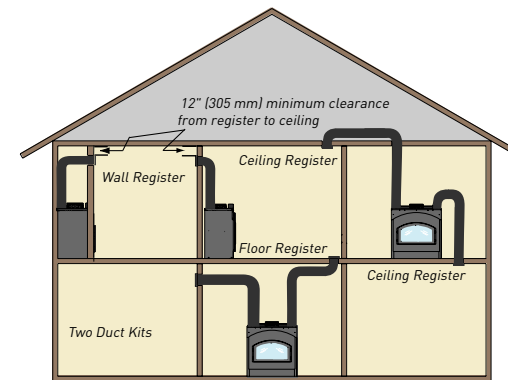
EXCLAIM



TRADITIONAL



HERRINGBONE



Possible Heat Zone Duct Runs

HEAT MANAGEMENT

Optional Heat Zone Kit

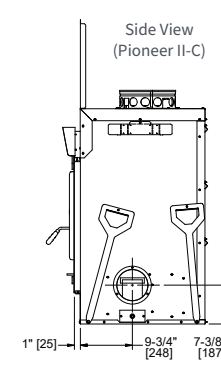
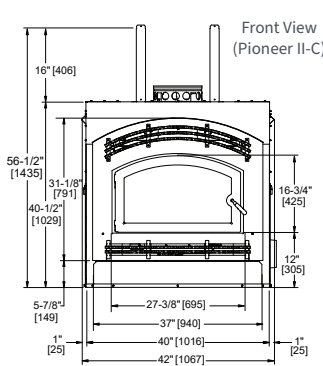
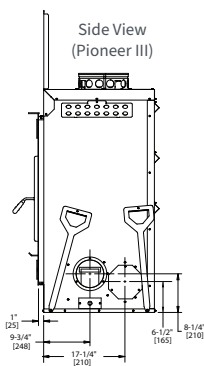
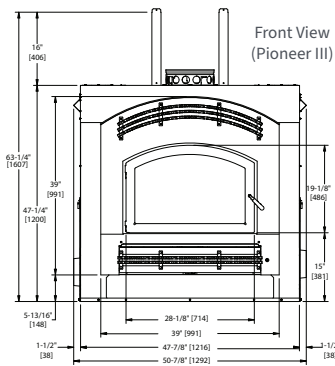
Available on Pioneer III, Pioneer II and Northstar

With zone heating, you can easily reduce your energy consumption by up to 40%, and reduce your utility bill in the process. Using a Heat&Glo fireplace as a supplemental heating source, you can turn down your central furnace or boiler system and still maintain comfortable temperatures in your common living area.

SPECIFICATIONS

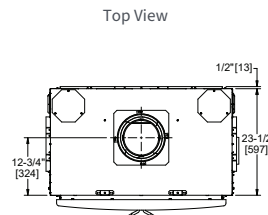
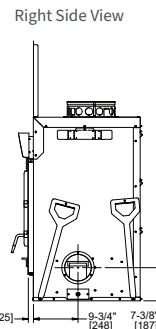
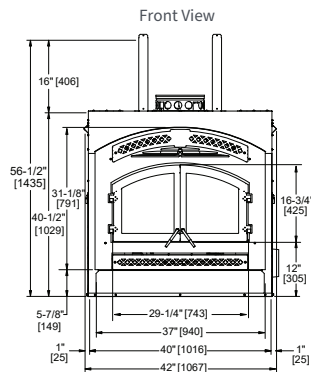
PIONEER SPECIFICATIONS

MODEL	FRONT WIDTH		BACK WIDTH		HEIGHT		DEPTH		FIREBOX OPENING
	UNIT	FRAMING	UNIT	FRAMING ¹	UNIT	FRAMING	UNIT	FRAMING	
Pioneer III	47-7/8 [1216]	51 [1295]	47-7/8 [1216]	51 [1295]	47-1/4 [1200]	63-1/4 [1607]	23-1/2 [597]	24-1/2 [622]	Arched: 28-1/8 x 19-1/8 [714x 486] Rectangular: 28-1/8 x 18-1/8 [714x460]
Pioneer II-C	40 [1016]	42-1/2 [1080]	40 [1016]	42-1/2 [1080]	40-1/2 [1029]	56-3/4 [1441]	23-1/2 [597]	24* [610]	27-3/8 x 16-3/4 [695x425]



NORTHSTAR SPECIFICATIONS

MODEL	FRONT WIDTH		BACK WIDTH		FRONT HEIGHT		REAR HEIGHT		DEPTH		FIREBOX OPENING
	Unit	FRAMING	Unit	FRAMING ¹	Unit	FRAMING	Unit	FRAMING	Unit	FRAMING	
Northstar-C*	40 [1016]	42-1/2 [1080]	40 [1016]	42-1/2 [1080]	40-1/2 [1029]	56-3/4 [1441]	40-1/2 [1029]	56-3/4 [1442]	23-1/2 [597]	24** [610]**	29-1/4 x 16-3/4 [743 x 425]



*Tested to EPA standards, the Northstar fireplace meets the strictest environmental standards for wood-burning fireplaces and can be used in areas where conventional wood-burning appliances are restricted or banned.

**If interior of chase will be drywalled, add the thickness to this measurement.

Dimensions for all fireplaces are in inches and millimeters. Reference dimensions only. We recommend measuring individual units at installation. Assumes the use of 1/2" [13] Sheetrock. NOTE: Non-combustible material is allowed over this dimension. Make sure you do NOT cover the decorative door opening.

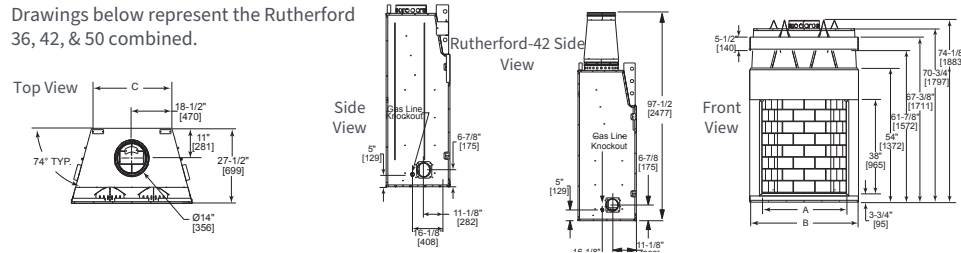
Refer to installation manual for detailed specifications on installing this product. Heat & Glo reserves the right to update units periodically. Actual product appearance, including flame, may differ from product images.

¹ When using outside air, refer to install manual for framing dimensions.

RUTHERFORD SPECIFICATIONS

MODEL	FRONT WIDTH		BACK WIDTH		HEIGHT		DEPTH		FIREBOX OPENING
	UNIT	FRAMING	UNIT	FRAMING ¹	UNIT	FRAMING	UNIT	FRAMING	
RUTHERFORD-36	46-7/8 [1191]	47-7/8 [1216]	31-1/8 [790]	47-7/8 [1216]	74-1/8 [1883]	74-1/4 [1886]	27-1/2 [699]	28-1/2 [724]	36 x 38 [914 x 965]
RUTHERFORD-42	52-7/8 [1343]	53-7/8 [1368]	37-1/8 [943]	53-7/8 [1368]	74-1/8 [1883]	74-1/2 [1892]	27-1/2 [699]	28-1/2 [724]	42 x 38 [1067 x 965]
RUTHERFORD-50	60-7/8 [1546]	61-7/8 [1572]	45-1/8 [1146]	61-7/8 [1572]	74-1/8 [1883]	74-1/2 [1892]	27-1/2 [699]	28-1/2 [724]	50 x 38 [1270 x 965]

Drawings below represent the Rutherford 36, 42, & 50 combined.

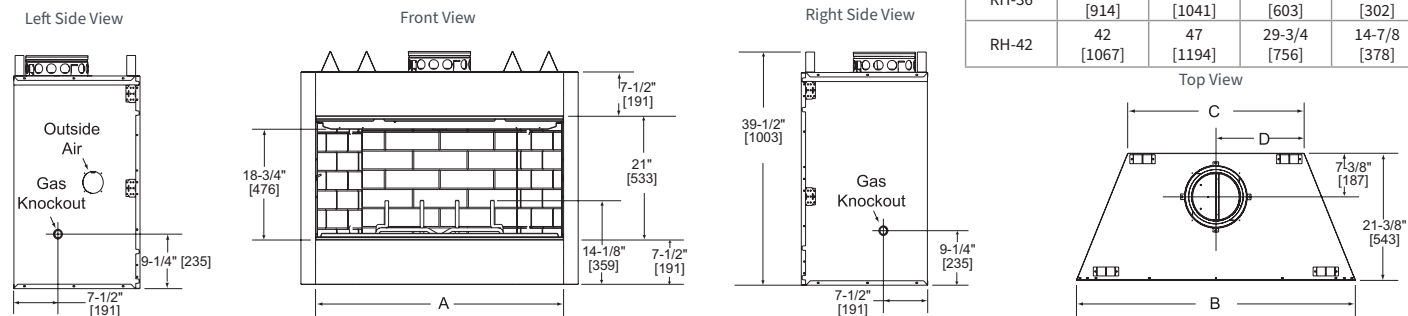


MODEL	A	B	C
RUTHERFORD-36	36 [914]	46-7/8 [1191]	31-1/8 [790]
RUTHERFORD-42	42 [1067]	52-7/8 [1343]	37-1/8 [943]
RUTHERFORD-50	50 [1270]	60-7/8 [1546]	45-1/8 [1146]

ROYAL HEARTH SPECIFICATIONS

MODEL	FRONT WIDTH		BACK WIDTH		HEIGHT		DEPTH		FIREBOX OPENING
	UNIT	FRAMING	UNIT	FRAMING ¹	UNIT	FRAMING	UNIT	FRAMING	
RH-36	41 [1041]	42 [1067]	23-3/4 [603]	42 [1067]	39-1/2 [1003]	39-3/4 [1010]	21-3/8 [543]	21-1/2 [546]	36 x 21 [914 x 533]
RH-42	47 [1194]	48 [1219]	29-3/4 [756]	48 [1219]	39-1/2 [1003]	39-3/4 [1010]	21-3/8 [543]	21-1/2 [546]	42 x 21 [1067 x 533]

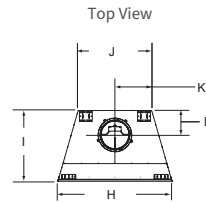
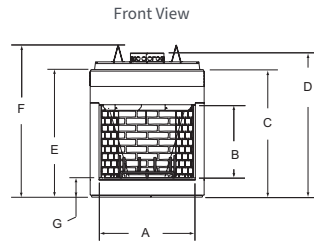
Drawings below represent the RH-36 and RH-42 combined.



EXCLAIM SPECIFICATIONS

MODEL	FRONT WIDTH		BACK WIDTH		FRONT HEIGHT		REAR HEIGHT		DEPTH		FIREBOX OPENING
	UNIT	FRAMING	UNIT	FRAMING ¹	UNIT	FRAMING ROUGH OPENING	UNIT	FRAMING	UNIT	FRAMING	
EXCLAIM-36	44-1/2 [1130]	45-1/2 [1156]	28-5/8 [727]	45-1/2 [1156]	49-5/8 [1260]	59-3/4 [1518]	59-1/4 [1505]	59-3/4 [1518]	27-1/2 [699]	28 [711]	36 x 28-1/2 [914 x 724]
EXCLAIM-42	50-1/2 [1283]	51-1/2 [1308]	34-1/2 [876]	51-1/2 [1308]	49-5/8 [1260]	59-3/4 [1518]	59-1/4 [1505]	59-3/4 [1518]	27-1/2 [699]	28-1/2 [724]	42 x 28-1/2 [1067 x 724]
EXCLAIM-50	60-5/8 [1540]	61-5/8 [1565]	41-5/8 [1057]	61-5/8 [1565]	60-1/4 [1530]	71 [1803]	70-1/2 [1791]	71 [1803]	29-1/2 [749]	30-1/2 [772]	50 x 33 [1270 x 838]

Drawings below represent the Exclaim 36, 42, & 50 combined.



MODEL	A	B	C	D	E	F	G	H	I	J	K	L
EXCLAIM 36	36 [914]	28-1/2 [724]	49-1/8 [1248]	55-1/2 [1410]	49-5/8 [1260]	59-1/4 [1505]	7-5/8 [194]	44-1/2 [1130]	27-1/2 [699]	28-5/8 [727]	14-3/8 [365]	9-1/2 [241]
EXCLAIM 42	42 [1067]	28-1/2 [724]	49-1/8 [1248]	55-1/2 [1410]	49-5/8 [1260]	59-1/4 [1505]	7-5/8 [194]	50-1/2 [1283]	27-1/2 [699]	34-1/2 [876]	17-3/8 [441]	9-1/2 [241]
EXCLAIM 50	50 [1270]	33 [838]	54-3/8 [1381]	68-1/8 [1730]	60-1/4 [1530]	70-1/2 [1791]	8-3/4 [222]	60-5/8 [1540]	29-1/2 [749]	41-5/8 [1057]	20-3/4 [527]	11-5/8 [295]

For complete information on this model, please contact us at:



OUR SUSTAINABILITY STORY

Our history of leadership in the hearth industry compels us to now lead the way in developing manufacturing practices that ensure our planet remains as durable, beautiful and long-lasting as our products. Find out how we are leading the industry in sustainable practices by scanning the code.



Heat&Glo Wood Brochure



Heat&Glo Gas Logs

LIMITED LIFETIME WARRANTY¹

The strongest in the industry, Heat & Glo provides a limited lifetime warranty on the most important aspects: firebox and heat exchanger.

¹: For full warranty details see heatnglo.com

Fireplace glass and other surfaces get extremely HOT and can cause severe burns if touched. Do not remove the protective safety screen from the front of the glass. Keep a safe distance away. To learn more visit www.heatnglo.com/fireplace-safety

Google, YouTube and Google Home are trademarks of Google LLC. Amazon, Alexa, and all related logos are trademarks of Amazon.com, Inc. or its affiliates.

HEAT&GLO
No one builds a better fire

Web: heatnglo.com
Phone: (888) 427-3973

[facebook.com/HeatandGlo](https://www.facebook.com/HeatandGlo)

[x.com/HeatandGlo](https://www.x.com/HeatandGlo)

[youtube.com/HeatandGlo](https://www.youtube.com/HeatandGlo)

