

Transform Your Fireplace

GAS INSERTS GUIDE



MAJESTIC

Love Your Fireplace Again

You don't need to settle for a cold, empty box. With the right setup, your fireplace can make any space the warmest, coziest, most lived-in part of your home.

A gas insert can bring it back to life with real flames, remote-start and no major renovations required. It's an easy update, handled by pros, that will leave you wondering why you didn't do it sooner.



Trilliant 30" with Canyon Brown brick interior panels,
Oak logs and Forged Arch front

Keep the Coziness, Lose the Hassle

Think of a gas insert as the full upgrade – designed to slide into your existing fireplace and transform it into an efficient, sealed heat source. Gas inserts bring serious ambiance and warmth, with sleek finishes and modern controls.

Updating is a win-win-win:

Easy to Use: Light it up in seconds via remote or app. Turn it off just as fast.

Beautiful: Clean lines, gorgeous flames and a look that complements your space.

Safer & Cleaner: No more sparks, soot or smoke. Just clean-burning gas and peace of mind.



Ruby Platinum 30" with Tavern Brown brick interior panels, Birch logs and New Bronze Contemporary Arch front



NEW! Ruby Platinum



Ruby Platinum 30" with Reflective Black Glass interior panels, Birch logs and Black Clean Screen front

Authentic experience at an exceptional value

Features

- **Elevated Burner** | Patent-pending burner with flames that wrap around logs, providing the natural look of a wood fire
- **LED Ember Bed** | Three brightness levels let you set the perfect mood and outlasts halogen alternatives
- **Direct Vent Technology** | Removes any fumes or combustion exhaust efficiently and effectively from your home
- **Personalize the Look** | Choose from a range of log, interior panel and front options
- **Easy to Control** | Via remote, Wi-Fi/app or voice command



Product Details

Trilliant



Trilliant 35" with Canyon Brown brick interior panels, Oak logs and New Bronze Clean Screen front

Features that raise the standard

Features

- **Standard Heat Exchanger** | Steel tube heat exchangers along with the variable speed fan drive hot air into the home quicker, producing fast, efficient heat
- **Standard Interior Panels & Accent Lighting** | Extra style at no extra cost
- **Battery Backup** | Ensures you always have a reliable source of warmth even with a winter power outage
- **Intellifire Touch®** | Offers you a touchscreen remote control or wireless wall switch to fit your life
- **Direct Vent Technology** | Removes any fumes or combustion exhaust efficiently and effectively from your home



Product Details

Ruby



Ruby 25" with Tavern Brown brick interior panels, Oak logs and Black Clean Screen front

Customized to fit your style

Features

- **Personalize the Look** | Select brick interiors and Oak logs for a traditional aesthetic or crushed glass and driftwood logs for more modern look (see Contemporary Conversion Kit on page 11)
- **Battery Backup** | Ensures you always have a reliable source of warmth even with a winter power outage
- **Intellifire Touch®** | Offers you a touchscreen remote control or wireless wall switch to fit your life
- **Direct Vent Technology** | Removes any fumes or combustion exhaust efficiently and effectively from your home



Product Details



Ruby 30" with Contemporary Conversion Kit and Clean Screen front

Jasper



Jasper 30" with Cottage Red brick interior panels,
Oak logs and Black Clean Screen front

The basics have never been better

Features

- **Intellifire® Ignition System** | Monitors ignition at all times to assure safe performance and save energy costs
- **Direct Vent Technology** | Removes any fumes or combustion exhaust efficiently and effectively from your home



Product Details

Make It Your Own

The beauty of a gas insert is how naturally it fits in. With a thoughtful mix of front and interior designs, plus control options, each insert is made to complement your style and the way you live.



Interior Panels

Interior panels add depth, dimension and personality to your fireplace. This backdrop enhances the flame and transforms the entire look of your insert.

TRILLIANT

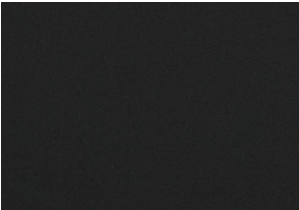


Canyon Brown (standard)



Reflective Black Glass (optional)

RUBY PLATINUM & RUBY



Black Metal (standard)



Tavern Brown (optional)

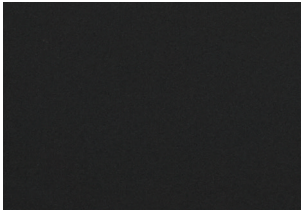


Cottage Red (optional)



Reflective Black Glass (optional)

JASPER



Black Metal (standard)



Tavern Brown (optional)



Cottage Red (optional)

Accessories

Reflect your design style with a wide variety of media options that bring the whole look of the fire together.

RUBY PLATINUM LOG OPTION



Natural Birch Logs

CONTEMPORARY RUBY INTERIOR OPTIONS



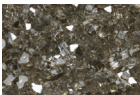
Driftwood Logs (optional)



Diamond Glass (standard)



Onyx Glass (standard)



Bronze Glass (optional)



Sapphire Glass (optional)



Stone Kit (optional)

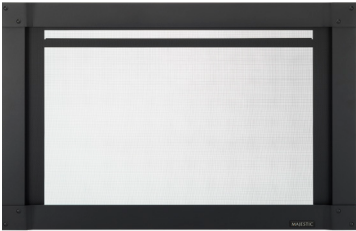
Front Options

Add a finishing touch to enhance your gas fireplace insert. A front frames the fireplace opening and is available in a variety of finishes.

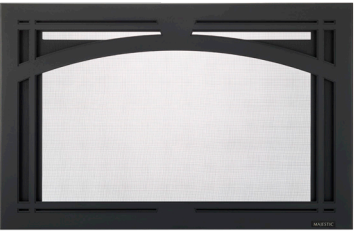
TRILLIANT



Forged Arch Front
(Black only)



Mission Fullview
(Black and New Bronze)

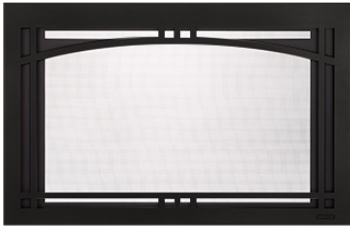


Tuscan Arch
(Black and New Bronze)



Clean Screen Front
(Black and New Bronze)

RUBY PLATINUM & RUBY



Contemporary Arch Front
(Black and New Bronze)

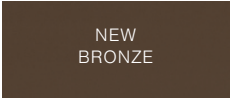


Clean Screen Front
(Black and New Bronze)

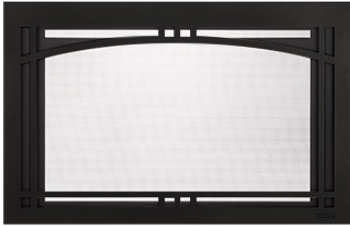


INSIDE FIT
Available in Black for Trilliant, Ruby Platinum, Ruby and Jasper for installations that require a front smaller than a standard overlap door.

FRONT COLOR OPTIONS



JASPER



Contemporary Arch Front
(Black and New Bronze)



Clean Screen Front
(Black and New Bronze)

Surrounds

Hide any gap between your gas fireplace insert and the existing fireplace opening with a low profile metal surround in different finishes. Custom surrounds may be available depending on sizes needed.

SMALL



MEDIUM



LARGE



SURROUND COLOR
OPTIONS

BLACK

NEW
BRONZE

Controls

Whether it's the IntelliFire® app that lets you start or stop the fire from your phone (even when you're not home), a sleek touchscreen remote that gives you easy access to flame height and fan speed, or a simple wall switch for quick on-off convenience, there's an option that fits your life.

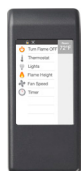
INTELLIFIRE APP



WIRELESS
WALL SWITCH



TOUCHSCREEN
REMOTE



SMART REMOTE
(compatible with Jasper)



Termination Caps

A termination cap is the essential, finishing touch on your fireplace vent. It keeps out rain and debris while ensuring safe and proper airflow.

ROUND CAP



SQUARE CAP
Available in Black or Copper finish



Compare & Measure

PACKAGE	MODEL	WIDTH	PRODUCT DIMENSIONS	BTUs	IGNITION SYSTEM	FRONT DESIGN OPTIONS	LOG OPTIONS	INTERIOR PANELS	FAN	REMOTE CONTROL	THERMOSTAT CONTROL	ADVANCED TECHNOLOGY	LIGHTING
BEST	RUBY PLATINUM	30"	31-1/8"W x 20-3/4"H x 14-1/2"D	27,000	IntelliFire Touch® with optional IntelliFire® app & voice control	3*	Oak & Birch	Black Metal Tavern Brown Cottage Red Reflective Black Glass	Yes	Touchscreen Remote	Yes	Elevated Burner & LED Ember Bed	Yes
	TRILLIANT	25"	26-1/8"W x 17-1/16"H x 14-1/2"D	27,000	IntelliFire Touch® with optional IntelliFire® app & voice control	5*	Oak	Canyon Brown Reflective Black Glass	Yes	Touchscreen Remote	Yes	Heat Exchanger	Yes
		30"	31-1/8"W x 20-3/4"H x 14-1/2"D	32,700									
		35"	36-1/8"W x 24"H x 14-1/2"D	35,000									
BETTER	RUBY	25"	26-1/8"W x 17-1/16"H x 14-1/2"D	27,000	IntelliFire Touch® with optional IntelliFire® app & voice control	3*	Oak	Black Metal Tavern Brown Cottage Red Reflective Black Glass	Yes	Touchscreen Remote	Yes	N/A	Optional
		30"	31-1/8"W x 20-3/4"H x 14-1/2"D	32,700									
		35"	36-1/8"W x 24"H x 14-1/2"D	35,000									
	RUBY CONTEMPORARY	30"	31-1/8"W x 20-3/4"H x 14-1/2"D	32,700	IntelliFire Touch® with optional IntelliFire® app & voice control	3*	Driftwood	Black Metal Reflective Black Glass	Yes	Touchscreen Remote	Yes	N/A	Optional
		35"	36-1/8"W x 24"H x 14-1/2"D	35,000									
GOOD	JASPER	30"	31-1/8"W x 20-3/4"H x 14-1/2"D	30,000	IntelliFire® (IPI) with optional Smart Remote control	3*	Oak	Black Metal Tavern Brown Cottage Red	Optional	Optional	Optional	N/A	N/A

*Inside fit front is available for installations that require a custom surround that is smaller than a standard overlap door.

EnerGuide (CSA P.4.1-15) Ratings Used in Canada and some U.S. states to measure annual fireplace efficiency.

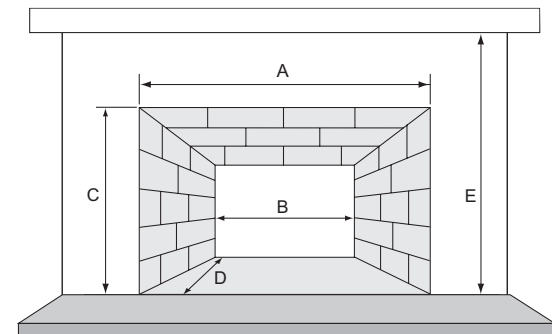
RUBY PLATINUM30IN	TRILLIANT25IN	TRILLIANT30IN	TRILLIANT35IN	RUBY25IN	RUBY30IN	RUBY35IN	JASPER30IN
68% (NG) 65% (LP)	68% (NG) 66% (LP)	71% (NG) 72% (LP)	72% (NG) 73% (LP)	68% (NG) 66% (LP)	71% (NG) 71% (LP)	72% (NG) 71% (LP)	68% (NG) 70% (LP)

How to Measure

Grab a pencil and measuring tape! The height, width and depth of your current fireplace determine what size insert will fit in your space.

- A. Fireplace front width _____
- B. Fireplace back width _____
- C. Fireplace front height _____
- D. Fireplace depth _____
- E. Hearth to mantel height _____

If you have a manufactured wood-burning fireplace, measure from the inside of the fireplace opening, not the outside trim.



What's Next?

Your fireplace makeover can happen faster than you think.

1

See It in Real Life

Step inside the showroom of your local Majestic® dealer to get a better understanding of how these products look and feel in real life. They will provide you a baseline estimate based on your preferences.

2

Schedule an In-home Preview

Your local dealer will send their friendly pros to your place. They'll measure and confirm options with you, providing you a more accurate and detailed project estimate and timeline.

3

Coordinate the Details

If all sounds good, a licensed contractor will stop by as soon as possible to run a gas line and electrical wire as needed. It's a clean, controlled process that doesn't involve ripping up walls.

4

Get Ready for Installation Day

Pros will install your gas insert in less than a day (typically). No drywall dust, no major construction.

5

Enjoy Your New Fireplace

In the final stages, the team will ensure the gas, fireplace and remote are functioning properly and walk you through the features of your new fire.



Trilliant 30" with Canyon Brown interior panels, Oak logs and Black Tuscan Arch front



MAJ-1047-0925

OUR SUSTAINABILITY STORY

Our history of leadership in the hearth industry compels us to now lead the way in developing manufacturing practices that ensure our planet remains as durable, beautiful and long-lasting as our products. Find out how we are leading the industry in sustainable practices by scanning the code at right.



majesticproducts.com

MAJESTIC