

Transform Your Fireplace

GAS INSERTS & GAS LOGS GUIDE



HEAT & GLO

Love Your Fireplace Again

You don't need to settle for a cold, empty box. With the right setup, your fireplace can make any space the warmest, coziest, most lived-in part of your home.

A gas insert or gas log set can bring it back to life with real flames, remote-start and no major renovations required. It's an easy update, handled by pros, that will leave you wondering why you didn't do it sooner.



Escape 35" with Firebrick interior, Oak logs and New Bronze Halston front

Keep the Coziness, Lose the Hassle

Think of a gas insert as the full upgrade – designed to slide into your existing fireplace and transform it into an efficient, sealed heat source. Gas inserts bring serious ambiance and warmth, with sleek finishes and modern controls.

Or, if you love the look of an open fire, gas log sets recreate the cozy vibe of a wood fire with the flip of a switch.

No matter which solution you choose, it's a win-win-win:

Easy to Use: Light it up in seconds via remote or app. Turn it off just as fast.

Beautiful: Clean lines, gorgeous flames and a look that complements your space.

Safer & Cleaner: No more sparks, soot or smoke. Just clean-burning gas and peace of mind.



Supreme 25" with Stratford
Traditional Brick interior panels,
Birch logs and Gun Metal
Halston Arch front



NEW! SupremeX



SupremeX 30" with Black Metal Interior panels,
Oak logs and Black Firescreen front

The best fire for the best price, period.

Features

- **Elevated Burner** Patent-pending burner with flames that wrap around logs, providing the natural look of a wood fire
- **LED Ember Bed** Three brightness levels let you set the perfect mood and outlasts halogen alternatives
- **Direct Vent Technology** Removes any fumes or combustion exhaust efficiently and effectively from your home
- **Personalize the Look** Choose from a range of log, interior panel and front options
- **Easy to Control** Via remote, Wi-Fi/app or voice command



Product Details



SupremeX 30" with Stratford Traditional Brick,
Oak logs and New Bronze Halston Arch front

Industry-leading realism.

Flames wrap around logs creating the natural look of a wood fire.



Escape



Escape 35" with Firebrick® interior, Oak logs and Chateau Forge front

Serious heat meets seamless design.

Features

- **Anti-Reflective Glass** Provides a clear view with virtually invisible glass that reduces glare by 89% over ceramic glass
- **Direct Vent Technology** Removes any fumes or combustion exhaust efficiently and effectively from your home
- **FireBrick Technology** Warms your room faster and uses less fuel with patented ceramic material that supplies up to 25% more heat
- **Personalize the Look** Choose from a range of front options
- **Easy to Control** Via remote, Wi-Fi/app or voice command



Product Details

Supreme



Supreme 25" with Reflective Black Glass interior panels, Birch logs and Gun Metal Firescreen front

Thoughtful design with real performance.

Features

- **Direct Vent Technology** Removes any fumes or combustion exhaust efficiently and effectively from your home
- **Ceramic Fiber Technology** Produces durable, glowing logs that are a stunning replica of a real wood fire
- **Personalize the Look** Choose from a range of log, interior panel and front options
- **Easy to Control** Via remote, Wi-Fi/app or voice command



Product Details

Cosmo



Cosmo 30" with Fluted Black Glass interior panels and New Bronze Halston front

For the modern fireplace makeover.

Features

- **Direct Vent Technology** Removes any fumes or combustion exhaust efficiently and effectively from your home
- **Black Fluted Glass Front** Adds depth and dimension to enhance the contemporary look of the fire
- **Easy to Control** Via remote, Wi-Fi/app or voice command



Product Details

Provident



Provident 30" with Black Metal Interior panels,
Oak logs and Gun Metal Firescreen front

Everything you need and nothing you don't.

Features

- **Direct Vent Technology** Removes any fumes or combustion exhaust efficiently and effectively from your home
- **IntelliFire® Ignition System** Monitors ignition at all times to assure safe performance and save energy costs
- **Easy to Control** Via remote



Product Details

Make It Your Own

The beauty of a gas insert is how naturally it fits in. With a thoughtful mix of front and interior designs, plus control options, each insert is made to complement your style and the way you live.



Interior Panels

Interior panels add depth, dimension and personality to your fireplace. This backdrop enhances the flame and transforms the entire look of your insert.

ESCAPE



FIREBRICK SEAMLESS INTERIOR
(Standard)

SUPREME, SUPREME AND PROVIDENT



BLACK METAL
(Standard)



STRATFORD TRADITIONAL BRICK
(Optional upgrade on SupremeX,
Supreme and Provident)

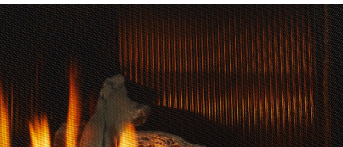


TRANQUIL GREIGE
HERRINGBONE BRICK
(Optional upgrade on SupremeX
and Supreme)

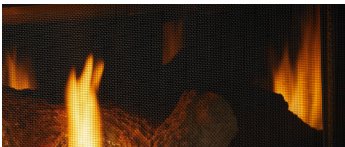


REFLECTIVE BLACK GLASS
(Optional upgrade on SupremeX
and Supreme)

COSMO



FLUTED BLACK GLASS
(Standard)



REFLECTIVE BLACK GLASS
(Optional)

Logs, Stones and Crystals

Reflect your design style with a wide variety of media options that bring the whole look of the fire together.

SUPREME LOG OPTION



NATURAL BIRCH LOGS

SUPREME LOG OPTION



NATURAL BIRCH LOGS

COSMO INTERIOR OPTIONS (Glass media required for installation)



CLEAR GLASS



EBONY GLASS



AMBER GLASS



COBALT GLASS



SCARLET GLASS



ICED FOG GLASS



CERAMIC RIVER ROCK STONES
(Optional)



DRIFTWOOD LOGS
(Optional)

Front Options

Add a finishing touch to enhance your gas fireplace insert. A front frames the fireplace opening and is available in a variety of finishes.

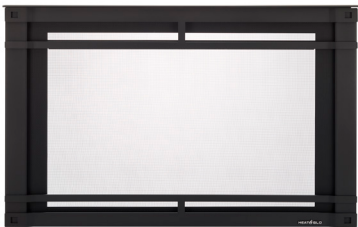
ESCAPE



CHATEAU FORGE Available in hand-crafted, Hammered Steel.



GALLERIA Available in Black, New Bronze or Gun Metal.



HALSTON Available in Black, New Bronze or Gun Metal.



IRON AGE Available in Black, New Bronze or Gun Metal.



FIRESCREEN Available in Black, New Bronze or Gun Metal.

SUPREMEX AND SUPREME



HALSTON ARCH Available in Black, New Bronze or Gun Metal.



IRON AGE Available in Black, New Bronze or Gun Metal.

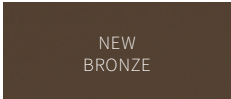
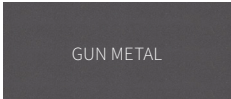
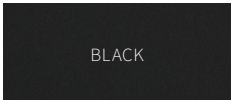


FIRESCREEN Available in Black, New Bronze or Gun Metal.



INSIDE FIT
Available in Black for Supreme, Provident and Cosmo for installations that require a front smaller than a standard overlap door.

FRONT COLOR OPTIONS



COSMO



HALSTON ARCH Available in Black, New Bronze or Gun Metal.



IRON AGE Available in Black, New Bronze or Gun Metal.

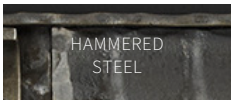


FIRESCREEN Available in Black, New Bronze or Gun Metal.

PROVIDENT



FIRESCREEN Available in Black, New Bronze or Gun Metal.



Surrounds

Hide any gap between your gas fireplace insert and the existing fireplace opening with a low profile metal surround in different finishes. Custom surrounds may be available depending on sizes needed.

SMALL



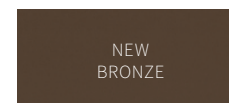
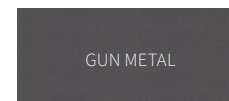
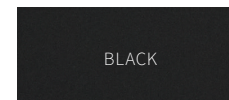
MEDIUM



LARGE



SURROUND COLOR OPTIONS



Controls

Whether it's the IntelliFire® app that lets you start the fire from your phone (even when you're not home), a sleek touchscreen remote that gives you easy access to flame height and fan speed, or a simple wall switch for quick on-off convenience, there's an option that fits your life.

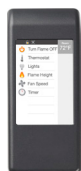
INTELLIFIRE APP



WIRELESS WALL SWITCH



TOUCHSCREEN REMOTE



SMART REMOTE
(compatible with Provident)



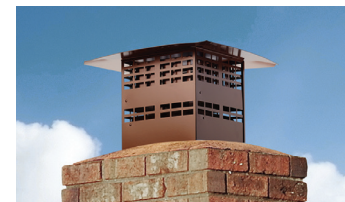
Termination Caps

A termination cap is the essential, finishing touch on your fireplace vent. It keeps out rain and debris while ensuring proper and safe airflow.

ROUND CAP



SQUARE CAP
Available in Black or Copper finish



Compare & Measure

PACKAGE	MODEL	WIDTH	PRODUCT DIMENSIONS	IGNITION SYSTEM	FRONT DESIGN OPTIONS	LOG OPTIONS	INTERIOR PANELS	FAN	REMOTE CONTROL	THERMOSTAT CONTROL	ADVANCED TECHNOLOGY	ACCENT LIGHTING
BEST	ESCAPE	30"	30"W x 22-3/8"H x 16-3/8"D	IntelliFire Touch® with optional IntelliFire® app & voice control	5	Oak	Patented FireBrick®	Yes	Touchscreen Remote	Yes	Anti-reflective Glass	Yes
		35"	34-5/8"W x 24-3/8"H x 17-7/8"D									
	SUPREMEX	30"	31-1/8"W x 20-3/4"H x 14-1/2"D	IntelliFire Touch® with optional IntelliFire® app & voice control	3*	Oak & Birch	Black Metal Stratford Brick Herringbone Brick Reflective Black Glass	Yes	Touchscreen Remote	Yes	Elevated Burner & LED Ember Bed	Yes
BETTER	SUPREME	25"	26-1/8"W x 17-1/16"H x 14-1/2"D	IntelliFire Touch® with optional IntelliFire® app & voice control	3*	Oak & Birch	Black Metal Stratford Brick Herringbone Brick Reflective Black Glass	Yes	Touchscreen Remote	Yes	N/A	Optional
		30"	31-1/8"W x 20-3/4"H x 14-1/2"D									
		35"	36-1/8"W x 24"H x 14-1/2"D									
GOOD	COSMO	30"	31-1/8"W x 20-3/4"H x 14-1/2"D	IntelliFire Touch® with optional IntelliFire® app & voice control	3*	Oak	Fluted Reflective Black Glass Reflective Black Glass	Yes	Touchscreen Remote	Yes	N/A	N/A
		35"	16-1/8"W x 24"H x 14-1/2"D									
BASIC	PROVIDENT	30"	31-1/8"W x 20-3/4"H x 14-1/2"D	IntelliFire® (IPI) with optional Smart Remote control	1*	Oak	Reflective Black Glass	Optional	Optional	Optional	N/A	N/A
		35"	36-1/8"W x 24"H x 14-1/2"D									

*Inside fit front is available for installations that require a custom surround that is smaller than a standard overlap door.

How to Measure

Grab a pencil and measuring tape! The height, width and depth of your current fireplace determine what size insert or gas logs will fit in your space.

A. Fireplace front width_____

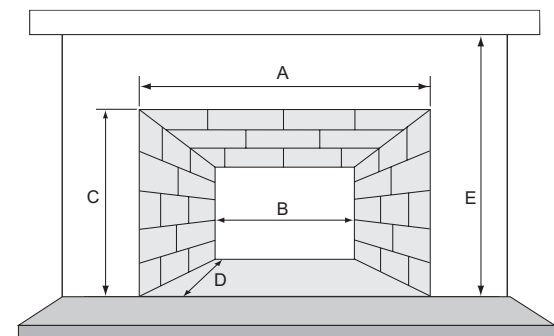
B. Fireplace back width_____

C. Fireplace front height_____

D. Fireplace depth_____

E. Hearth to mantel height_____

If you have a manufactured wood-burning fireplace, measure from the inside of the fireplace opening, not the outside trim.



What's Next?

Your fireplace makeover can happen faster than you think.

1

See It in
Real Life

Step inside the showroom of your local Heat & Glo® dealer to get a better understanding of how these products look and feel in real life. They will provide you a baseline estimate based on your preferences.

2

Schedule an
In-home Preview

Your local dealer will send their friendly pros to your place. They'll measure and confirm options with you, providing you a more accurate and detailed project estimate and timeline.

3

Coordination of
the Details

If all sounds good, a licensed contractor will stop by as soon as possible to run a gas line and electric as needed. It's a clean, controlled process that doesn't involve ripping up walls.

4

Get Ready for
Installation Day

Pros will install your gas insert in less than a day (typically). No drywall dust, no major construction.

5

Enjoy Your New
Fireplace

In the final stages, the team will ensure the gas, fireplace and remote are functioning properly and walk you through the features of your new fire.

Gas Logs & Burners



Grand Oak 3-tier gas log set

The convenience of gas meets the experience of an open hearth.

Features

- **Grand Collection** Our biggest, boldest logs designed to fill as much space as possible | Oak and Birch options
- **Duzy Collection** A premium collection available in 2, 3 or 5-log sets | Oak
- **Contemporary Collection** A slim burner with sleek style | Reflective glass or lava rock options, plus optional decorative spheres
- **Classic Collection** Our simplest upgrade that preserves the heart and heat of your fireplace | Oak, Birch and Kindle options



Product Details





Grand Birch 3-tier gas log set

Open Up to Possibilities.

Love the warmth and ambiance of a real fire but not the mess? A gas log set gives you the glow without the smoke or ash. Choose from hand-painted logs, modern glass or sculptural spheres—each designed to work beautifully in your existing wood-burning fireplace with a gas hookup.



HNG-1142-0625

OUR SUSTAINABILITY STORY

Our history of leadership in the hearth industry compels us to now lead the way in developing manufacturing practices that ensure our planet remains as durable, beautiful and long-lasting as our products. Find out how we are leading the industry in sustainable practices by scanning the code at right.



heatnglo.com

HEAT & GLO
No one builds a better fire