



## GAS LOG SETS For Outdoor Fireplaces



outdoor   
**lifestyles**  
by hearth & home technologies®



## GRAND SERIES



24" Grand Oak 3 tier log set



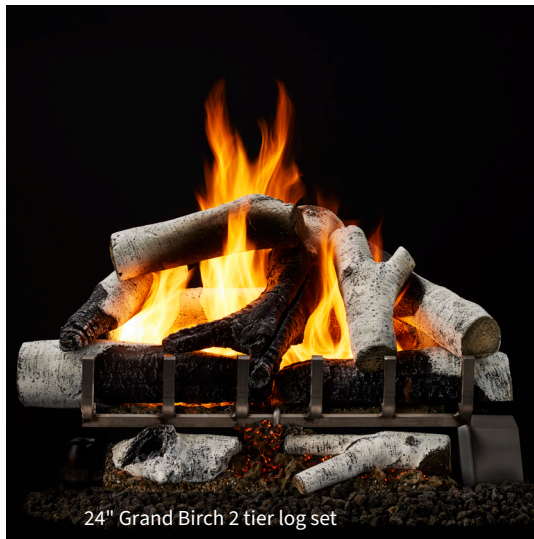
24" Grand Birch 3 tier log set



24" Heritage Oak 3 tier log set



24" Grand Oak 2 tier log set



24" Grand Birch 2 tier log set



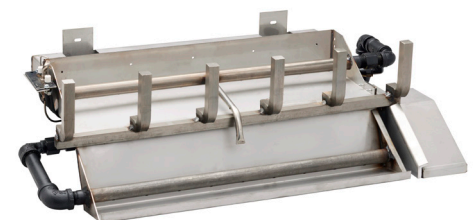
24" Heritage Oak 2 tier log set

The convenience of gas meets the experience of an open-hearth fireplace. Hand-painted logs are designed to be ultra-realistic – beautiful with or without a burning fire. Simply use the included outdoor open-hearth fireplace switch for immediate, radiant heat that's reminiscent of a real fire. Enjoy a bold, dynamic fire without the mess or hassle of wood.

- Available in 18", 24" and 30" widths
- Available in two heights to accommodate multiple fireplace sizes
- Three unique log sets for each burner height
- Battery-powered electronic ignition



3 Tier Outdoor Stadium Burner



2 Tier Outdoor Stadium Burner





Preserve the heart of your home with our Classic Gas Logs Series. Hand-painted logs are the heart of your outdoor space and designed to accommodate your existing firebox, providing more efficient and effortless use of an open-hearth style fireplace. Ignite via match strike for an authentic experience.

- Available in 18" and 24" widths
- Four different log options
- Ignite the fire with the strike of a match or via standing pilot
- Up to 80,000 BTUs

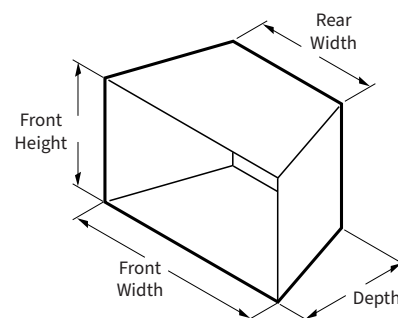


Single Tube Outdoor Burner

## FIND YOUR PERFECT FIT

**STEP 1:** Measure your fireplace height, width, depth and rear width. (See diagram.)

**STEP 2:** Choose a burner and gas log set that fits within your measured dimensions.



## SPECIFICATIONS

Series	Log Sets, Media, and Cannon Balls	Burners	Compatible Outdoor Open Hearth and Wood Fireplaces					Minimum Firebox Dimensions				BTUs
			36" Villawood	42" Villawood	36" Cottagewood	42" Cottagewood	42" Castlewood	Front Width	Depth	Rear Width	Height	
Grand	Grand Oaks Grand Birch Heritage Oak	18" 2 Tier			X	X		27"	16"	19"	18"	Up to 92,000 BTUs
		24" 2 Tier			X	X		34"	20"	22"	18"	
		30" 2 Tier				X		40"	20"	29"	18"	
		18" 3 Tier			X			32"	23"	21"	22"	
		24" 3 Tier				X	X	34"	23"	22"	22"	
Classic	Timberland Oak	18" Single Tube	X	X	X	X		28"	14"	16"	16"	Up to 80,000 BTUs
	Smoldering Timberland Oak											
	Woodland Birch	24" Single Tube		X		X		34"	14"	18"	18"	
	Kindled Birch											



LEARN MORE

For complete information and valuable assistance on these products, contact us at:

**outdoor  
lifestyles**  
by hearth & home technologies®

Phone: 800-927-6841  
Web: [fireplaces.com](http://fireplaces.com)



#### Limited Warranty\*

Hearth & Home Technologies guarantees protection for a period of one year from date of purchase.

**\*For full warranty details, see installation manual**

The information provided in this literature is for planning purposes only and subject to change. The flame and ember appearance may vary based on the type of fuel burned and venting configuration used. Actual product appearance, including flame, may differ from product images. Please consult the MSRP book for a complete list of optional accessories. ©2012/2013 Hearth & Home Technologies.

Fireplace, stove and insert surfaces get extremely HOT and can cause severe burns if touched. Keep a safe distance away. To learn more visit [www.fireplaces.com/fireplacesafety](http://www.fireplaces.com/fireplacesafety)