

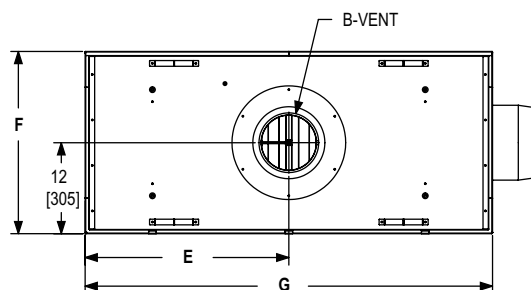


Please consult the manufacturer's installation manual for all details and requirements before making a final design layout decision.

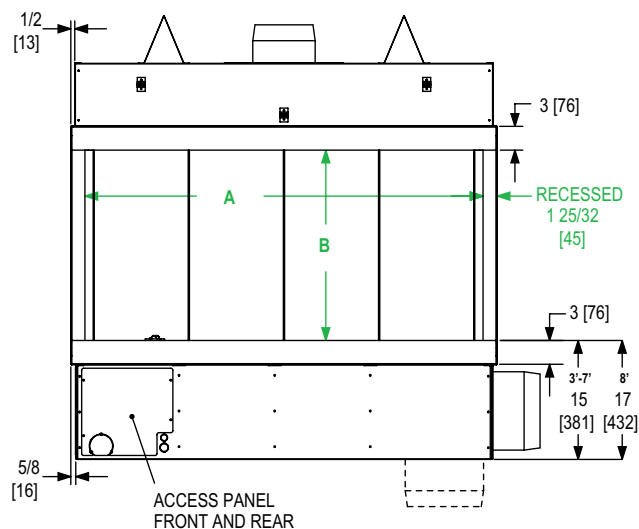
# ENLIGHT SINGLE-SIDED

LUXURY GAS FIREPLACES

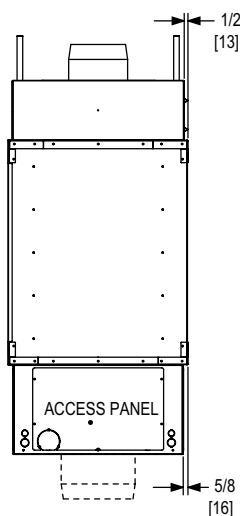
TOP VIEW



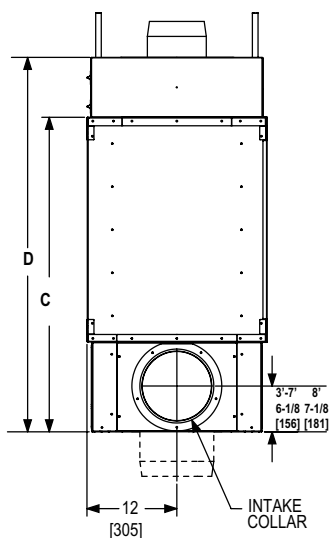
FRONT VIEW



LEFT SIDE VIEW



RIGHT SIDE VIEW



The dimensions in green are the allowable finishing width and height required to fit the glass into the fireplace. Finishing materials must not overlap these dimension.

- Designate power vent choice at the time of order.
- If using an in-line power vent, must signify at time of order
- It is important to refer to the installation and operating manual PRIOR to installation; verify all measurements and clearances for your particular installation
- Dimensions are in inches and [millimeters]
- Air intake collar may be rotated to vent off the side, or from the bottom of the fireplace
- Use UL approved B-Vent pipe and follow all manufacturer installation guidelines
- Vent run approved up to 110' with quantity of 11, 90 degree elbows. 1" clearance to B-Vent must be maintained

IMPORTANT: MINIMUM FRAMING DIMENSIONS ARE TO COMBUSTIBLES WITH 1/2" CLEARANCE STANDOFFS IN PLACE

SPECIFICATIONS

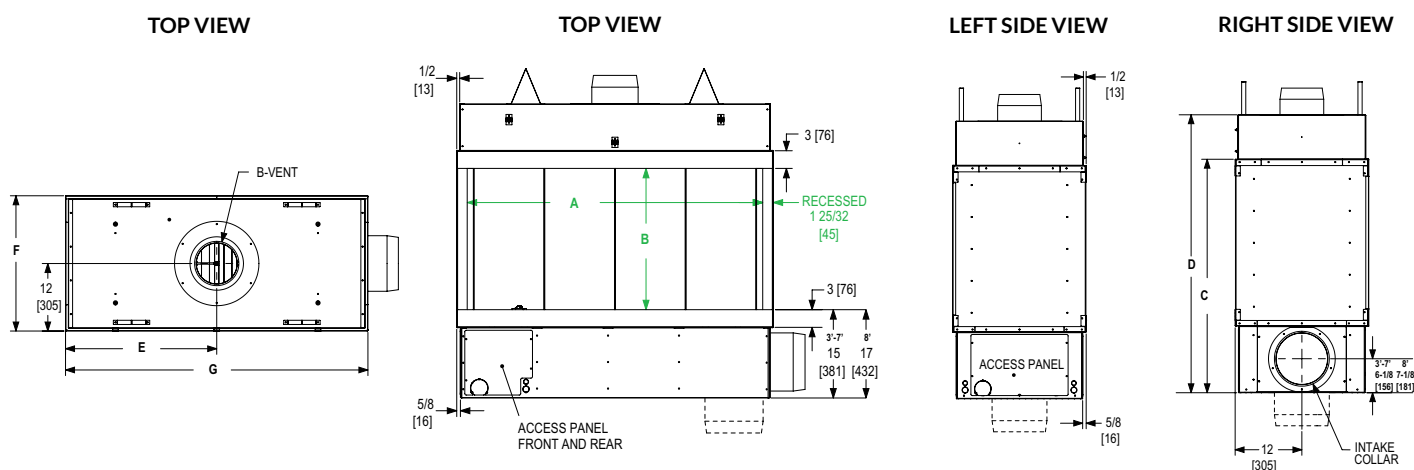
Model #	BTU'S	EXHAUST B-VENT	OUTSIDE AIR	RS SERIES POWER-VENT	IN-LINE POWER-VENT
<b>3-SS-20-G</b>	40,000	8"	10"	RS12	RSIF160
<b>4-SS-20-G</b>	60,000	8"	10"	RS12	RSIF160
<b>5-SS-20-G</b>	80,000	8"	10"	RS12	RSIF160
<b>6-SS-20-G</b>	100,000	10"	10"	RS14	RSIF180
<b>7-SS-20-G</b>	120,000	10"	10"	RS14	RSIF180
<b>8-SS-20-G</b>	140,000	10"	12"	RS14	RSIF180

FIREPLACE DIMENSIONS

A FINISHING WIDTH	B FINISHING HEIGHT	C HEIGHT TO TRIM TOP	D OVERALL HEIGHT	E CENTER OF VENT	F FIREBOX DEPTH	G OVERALL WIDTH
38-3/16 [970]	20 [508]	38 [1,067]	46 [1,168]	20-7/8 [530]	24-1/32 [610]	41-3/4 [1,065]
50-3/16 [1,275]	20 [508]	38 [1,067]	46 [1,168]	26-7/8 [683]	24-1/32 [610]	53-3/4 [1,365]
62-3/16 [1,580]	20 [508]	38 [1,067]	46 [1,168]	32-7/8 [835]	24-1/32 [610]	65-3/4 [1,670]
74-3/16 [1,884]	20 [508]	38 [1,067]	46 [1,168]	38-7/8 [987]	24-1/32 [610]	77-3/4 [1,975]
86-3/16 [2,189]	20 [508]	38 [1,067]	46 [1,168]	44-7/8 [1,140]	24-1/32 [610]	89-3/4 [2,280]
98-3/16 [2,494]	20 [508]	40 [1,067]	52 [1,321]	50-7/8 [1,321]	24-1/32 [610]	101-3/4 [2,584]

MINIMUM FRAMING  
DIMENSIONS

WIDTH	HEIGHT	DEPTH
43-3/4 [1,111]	52 [1,321]	25-1/32 [636]
55-3/4 [1,416]	52 [1,321]	25-1/32 [636]
67-3/4 [1,721]	52 [1,321]	25-1/32 [636]
79-3/4 [2,026]	52 [1,321]	25-1/32 [636]
91-3/4 [2,330]	52 [1,321]	25-1/32 [636]
103-3/4 [2,635]	58 [1,473]	25-1/32 [636]

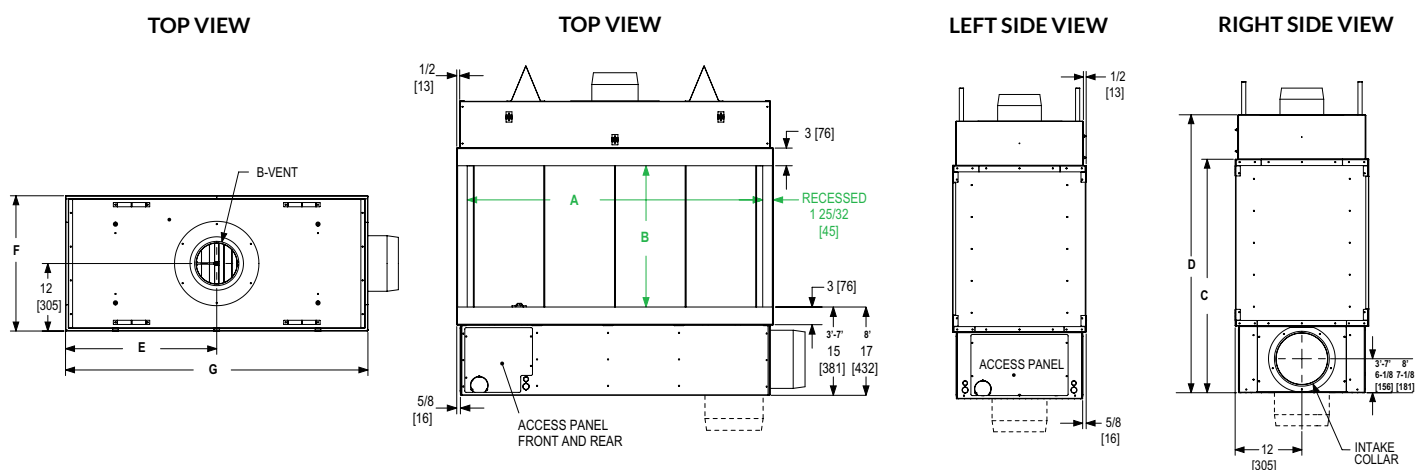


SPECIFICATIONS

FIREPLACE DIMENSIONS

MINIMUM FRAMING DIMENSIONS

Model #	BTU'S	EXHAUST B-VENT	OUTSIDE AIR	RS SERIES POWER-VENT	IN-LINE POWER-VENT	A FINISHING WIDTH	B FINISHING HEIGHT	C HEIGHT TO TRIM TOP	D OVERALL HEIGHT	E CENTER OF VENT	F FIREBOX DEPTH	G OVERALL WIDTH	WIDTH	HEIGHT	DEPTH
3-SS-24-G	40,000	8"	10"	RS12	RSIF160	38-3/16 [970]	24 [610]	42 [1,067]	50 [1,270]	20-7/8 [530]	24-1/32 [610]	41-3/4 [1,065]	43-3/4 [1,111]	56 [1,422]	25-1/32 [636]
4-SS-24-G	60,000	8"	10"	RS12	RSIF160	50-3/16 [1,275]	24 [610]	42 [1,067]	50 [1,270]	26-7/8 [683]	24-1/32 [610]	53-3/4 [1,365]	55-3/4 [1,416]	56 [1,422]	25-1/32 [636]
5-SS-24-G	80,000	8"	10"	RS12	RSIF160	62-3/16 [1,580]	24 [610]	42 [1,067]	50 [1,270]	32-7/8 [835]	24-1/32 [610]	65-3/4 [1,670]	67-3/4 [1,721]	56 [1,422]	25-1/32 [636]
6-SS-24-G	100,000	10"	10"	RS14	RSIF180	74-3/16 [1,884]	24 [610]	42 [1,067]	50 [1,270]	38-7/8 [987]	24-1/32 [610]	77-3/4 [1,975]	79-3/4 [2,026]	56 [1,422]	25-1/32 [636]
7-SS-24-G	120,000	10"	10"	RS14	RSIF180	86-3/16 [2,189]	24 [610]	42 [1,067]	50 [1,270]	44-7/8 [1,140]	24-1/32 [610]	89-3/4 [2,280]	91-3/4 [2,330]	56 [1,422]	25-1/32 [636]
8-SS-24-G	140,000	10"	12"	RS14	RSIF180	98-3/16 [2,494]	24 [610]	44 [1,118]	56 [1,422]	50-7/8 [1,321]	24-1/32 [610]	101-3/4 [2,584]	103-3/4 [2,635]	62 [1,574]	25-1/32 [636]
3-SS-30-G	40,000	8"	10"	RS12	RSIF160	38-3/16 [970]	30 [762]	48 [1,219]	56 [1,422]	20-7/8 [530]	24-1/32 [610]	41-3/4 [1,065]	43-3/4 [1,111]	62 [1,574]	25-1/32 [636]
4-SS-30-G	60,000	8"	10"	RS12	RSIF160	50-3/16 [1,275]	30 [762]	48 [1,219]	56 [1,422]	26-7/8 [683]	24-1/32 [610]	53-3/4 [1,365]	55-3/4 [1,416]	62 [1,574]	25-1/32 [636]
5-SS-30-G	80,000	8"	10"	RS12	RSIF160	62-3/16 [1,580]	30 [762]	48 [1,219]	56 [1,422]	32-7/8 [835]	24-1/32 [610]	65-3/4 [1,670]	67-3/4 [1,721]	62 [1,574]	25-1/32 [636]
6-SS-30-G	100,000	10"	10"	RS14	RSIF180	74-3/16 [1,884]	30 [762]	48 [1,219]	56 [1,422]	38-7/8 [987]	24-1/32 [610]	77-3/4 [1,975]	79-3/4 [2,026]	62 [1,574]	25-1/32 [636]
7-SS-30-G	120,000	10"	10"	RS14	RSIF180	86-3/16 [2,189]	30 [762]	48 [1,219]	56 [1,422]	44-7/8 [1,140]	24-1/32 [610]	89-3/4 [2,280]	91-3/4 [2,330]	62 [1,574]	25-1/32 [636]
8-SS-30-G	140,000	10"	12"	RS14	RSIF180	98-3/16 [2,494]	30 [762]	50 [1,270]	62 [1,575]	50-7/8 [1,321]	24-1/32 [610]	101-3/4 [2,584]	103-3/4 [2,635]	68 [1,727]	25-1/32 [636]
3-SS-36-G	40,000	8"	10"	RS12	RSIF160	38-3/16 [970]	36 [914]	54 [1,372]	62 [1,575]	20-7/8 [530]	24-1/32 [610]	41-3/4 [1,065]	43-3/4 [1,111]	68 [1,727]	25-1/32 [636]
4-SS-36-G	60,000	8"	10"	RS12	RSIF160	50-3/16 [1,275]	36 [914]	54 [1,372]	62 [1,575]	26-7/8 [683]	24-1/32 [610]	53-3/4 [1,365]	55-3/4 [1,416]	68 [1,727]	25-1/32 [636]
5-SS-36-G	80,000	8"	10"	RS12	RSIF160	62-3/16 [1,580]	36 [914]	54 [1,372]	62 [1,575]	32-7/8 [835]	24-1/32 [610]	65-3/4 [1,670]	67-3/4 [1,721]	68 [1,727]	25-1/32 [636]
6-SS-36-G	100,000	10"	10"	RS14	RSIF180	74-3/16 [1,884]	36 [914]	54 [1,372]	62 [1,575]	38-7/8 [987]	24-1/32 [610]	77-3/4 [1,975]	79-3/4 [2,026]	68 [1,727]	25-1/32 [636]
7-SS-36-G	120,000	10"	10"	RS14	RSIF180	86-3/16 [2,189]	36 [914]	54 [1,372]	62 [1,575]	44-7/8 [1,140]	24-1/32 [610]	89-3/4 [2,280]	91-3/4 [2,330]	68 [1,727]	25-1/32 [636]
8-SS-36-G	140,000	10"	12"	RS14	RSIF180	98-3/16 [2,494]	36 [914]	56 [1,422]	68 [1,727]	50-7/8 [1,321]	24-1/32 [610]	101-3/4 [2,584]	103-3/4 [2,635]	74 [1,880]	25-1/32 [636]



SPECIFICATIONS

Model #	BTU'S	EXHAUST B-VENT	OUTSIDE AIR	RS SERIES POWER-VENT	IN-LINE POWER-VENT
<b>3-SS-48-G</b>	40,000	8"	10"	RS12	RSIF160
<b>4-SS-48-G</b>	60,000	8"	10"	RS12	RSIF160
<b>5-SS-48-G</b>	80,000	8"	10"	RS12	RSIF160
<b>6-SS-48-G</b>	100,000	10"	10"	RS14	RSIF180
<b>7-SS-48-G</b>	120,000	10"	10"	RS14	RSIF180
<b>8-SS-48-G</b>	140,000	10"	12"	RS14	RSIF180
<b>3-SS-60-G</b>	40,000	8"	10"	RS12	RSIF160
<b>4-SS-60-G</b>	60,000	8"	10"	RS12	RSIF160
<b>5-SS-60-G</b>	80,000	8"	10"	RS12	RSIF160
<b>6-SS-60-G</b>	100,000	10"	10"	RS14	RSIF180
<b>7-SS-60-G</b>	120,000	10"	10"	RS14	RSIF180
<b>8-SS-60-G</b>	140,000	10"	12"	RS14	RSIF180

FIREPLACE DIMENSIONS

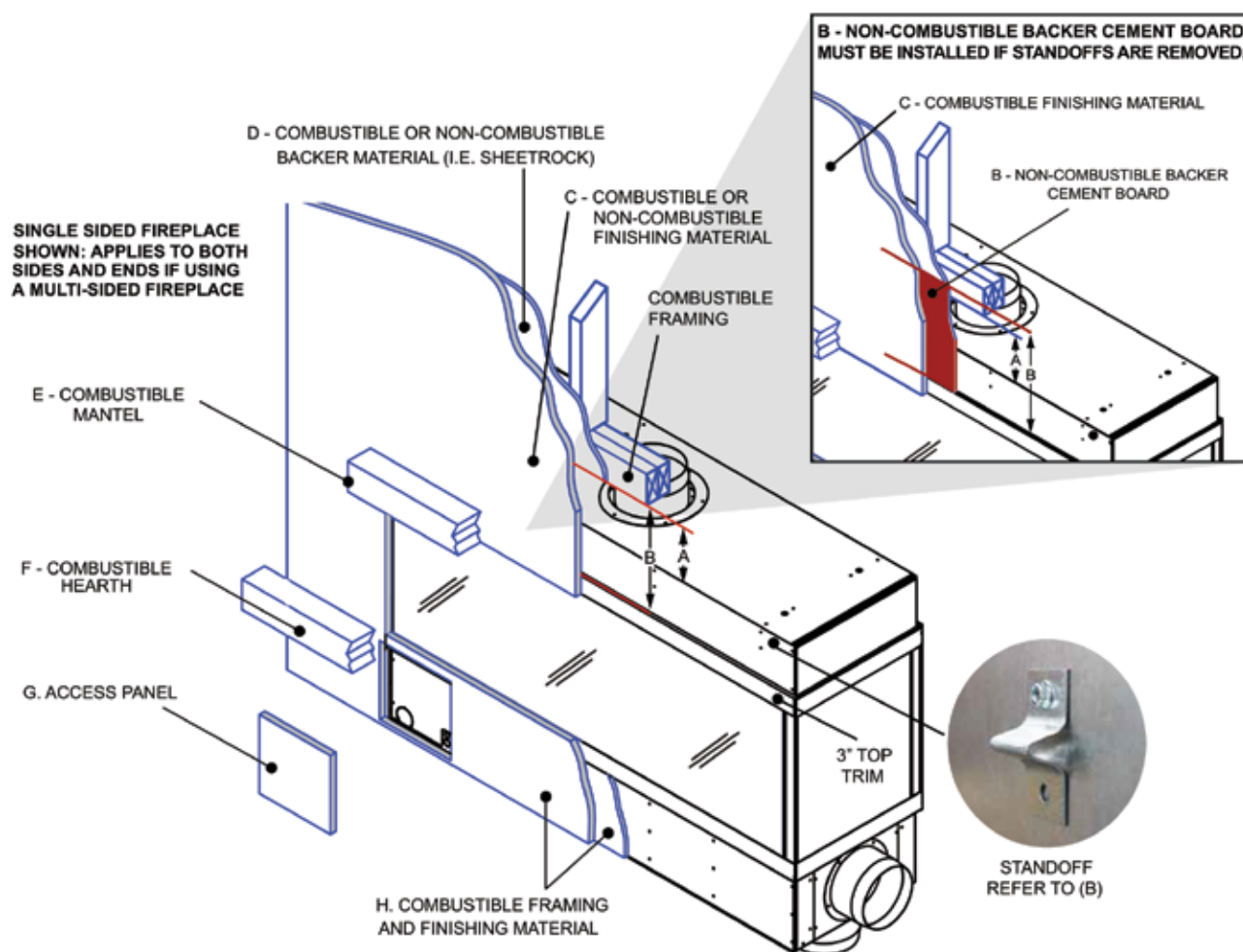
A FINISHING WIDTH	B FINISHING HEIGHT	C HEIGHT TO TRIM TOP	D OVERALL HEIGHT	E CENTER OF VENT	F FIREBOX DEPTH	G OVERALL WIDTH
38-3/16 [970]	48 [1,219]	66 [1,676]	74 [1,880]	20-7/8 [530]	24-1/32 [610]	41-3/4 [1,065]
50-3/16 [1,275]	48 [1,219]	66 [1,676]	74 [1,880]	26-7/8 [683]	24-1/32 [610]	53-3/4 [1,365]
62-3/16 [1,580]	48 [1,219]	66 [1,676]	74 [1,880]	32-7/8 [835]	24-1/32 [610]	65-3/4 [1,670]
74-3/16 [1,884]	48 [1,219]	66 [1,676]	74 [1,880]	38-7/8 [987]	24-1/32 [610]	77-3/4 [1,975]
86-3/16 [2,189]	48 [1,219]	66 [1,676]	74 [1,880]	44-7/8 [1,140]	24-1/32 [610]	89-3/4 [2,280]
98-3/16 [2,494]	48 [1,219]	68 [1,727]	80 [2,032]	50-7/8 [1,321]	24-1/32 [610]	101-3/4 [2,584]
38-3/16 [970]	60 [1,521]	78 [1,981]	86 [2,184]	20-7/8 [530]	24-1/32 [610]	41-3/4 [1,065]
50-3/16 [1,275]	60 [1,521]	78 [1,981]	86 [2,184]	26-7/8 [683]	24-1/32 [610]	53-3/4 [1,365]
62-3/16 [1,580]	60 [1,521]	78 [1,981]	86 [2,184]	32-7/8 [835]	24-1/32 [610]	65-3/4 [1,670]
74-3/16 [1,884]	60 [1,521]	78 [1,981]	86 [2,184]	38-7/8 [987]	24-1/32 [610]	77-3/4 [1,975]
86-3/16 [2,189]	60 [1,521]	78 [1,981]	86 [2,184]	44-7/8 [1,140]	24-1/32 [610]	89-3/4 [2,280]
98-3/16 [2,494]	60 [1,521]	80 [2,032]	92 [2,337]	50-7/8 [1,321]	24-1/32 [610]	101-3/4 [2,584]

MINIMUM FRAMING  
DIMENSIONS

WIDTH	HEIGHT	DEPTH
43-3/4 [1,111]	80 [2,032]	25-1/32 [636]
55-3/4 [1,416]	80 [2,032]	25-1/32 [636]
67-3/4 [1,721]	80 [2,032]	25-1/32 [636]
79-3/4 [2,026]	80 [2,032]	25-1/32 [636]
91-3/4 [2,330]	80 [2,032]	25-1/32 [636]
103-3/4 [2,635]	86 [2,184]	25-1/32 [636]
43-3/4 [1,111]	92 [2,337]	25-1/32 [636]
55-3/4 [1,416]	92 [2,337]	25-1/32 [636]
67-3/4 [1,721]	92 [2,337]	25-1/32 [636]
79-3/4 [2,026]	92 [2,337]	25-1/32 [636]
91-3/4 [2,330]	92 [2,337]	25-1/32 [636]
103-3/4 [2,635]	98 [2,489]	25-1/32 [636]

## CLEARANCES TO COMBUSTIBLES - WITH AND WITHOUT PROVIDED STANDOFFS

**WARNING! Risk of Fire! DO NOT apply combustible materials beyond the minimum clearances. Comply with all minimum clearances to combustibles as specified in this manual.**



### IMPORTANT: NEVER COVER THE GLASS WITH FINISHING MATERIALS

A. No combustible materials may be within 6" [152mm] of the top of the fireplace.

B. 1/2" [12.7] CLEARANCE TO COMBUSTIBLES ON SURFACE. The fireplace ships with standoffs in place to ensure a 1/2" clearance to combustibles is maintained on the surface. If the standoffs are removed, only non-combustible material can be installed against the surface of the fireplace such as a non-combustible backer cement board. 1/2" [12.7mm] minimum thickness must be used in the 15" [381mm] between the top of the 3" trim to the combustible framing the full width of the fireplace. The 15" includes a 7" [178mm] minimum above the top of the fireplace that is recommended for ease of attachment.

C. Combustible material may cover the non-combustible area mentioned in B.

D. Combustible finishing materials allowed.

E. Combustible or Non-Combustible mantel may be placed above the top of the glass viewing area. There are no restrictions on mantel depth.

F. Combustible hearth may be placed below the bottom of the glass viewing area.

G. Flat covers will cover the components access. Gas and electric inlets are located behind this panel. There are four access panel options all located on the pilot side of the fireplace; front (shown above), side, back and inside behind the glass.

Please take consideration of which option will be used to access the components for service later during planning.

H. Combustible framing and finishing materials allowed.

#### PRODUCT LISTING CODES

US	ANSI Z21.50-2019
CAN	CSA 2.22-2019



Product information provided is not complete and is subject to change without notice. Product installation must adhere strictly to instructions accompanying product to avoid risk of fire and potential injury.

STL/ENLIGHT-SS\_1023

**STELLAR**  
by Heat & Glo

Lakeville, MN Stellar.heatnglo.com  
Phone: 888-427-3973 952-985-6000