

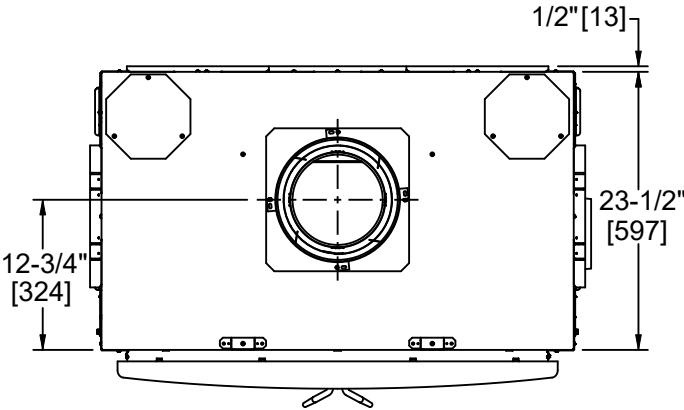


Please consult the manufacturer’s installation manual for all details and requirements before making a final design layout decision.

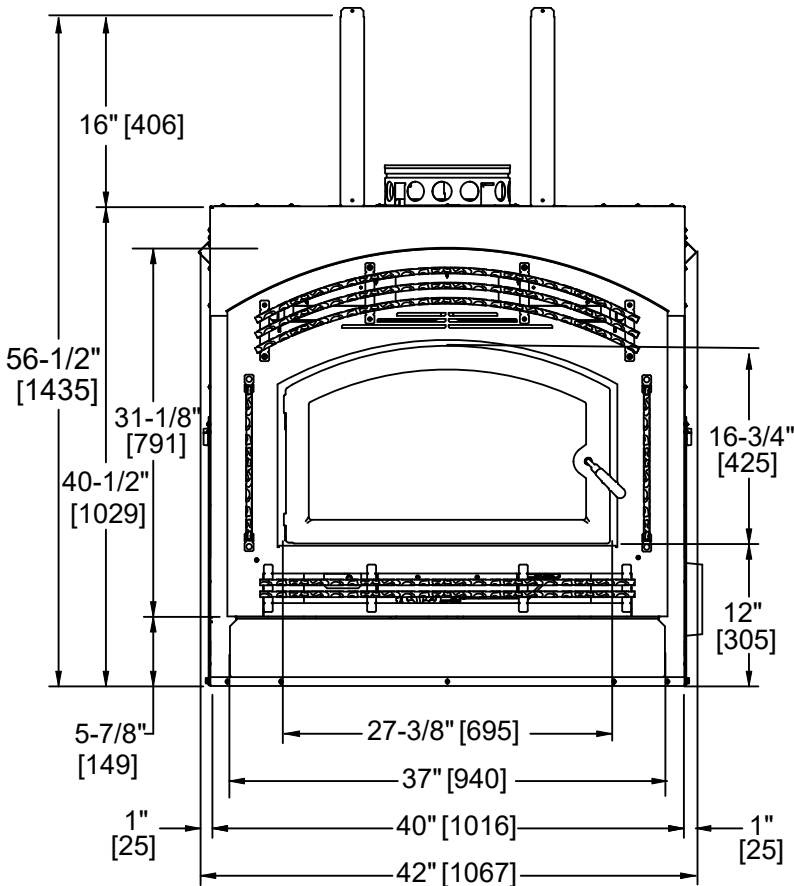
PIONEER II-C  
EPA Wood-burning Fireplace

MODEL	FRONT WIDTH		BACK WIDTH		HEIGHT		DEPTH		VIEWING AREA
Pioneer-II-C	Actual	Framing	Actual	Framing	Actual	Framing	Actual	Framing	296 sq in
	40	42-1/2	40	42-1/2	40-1/2	56-3/4	23-1/2	24*	

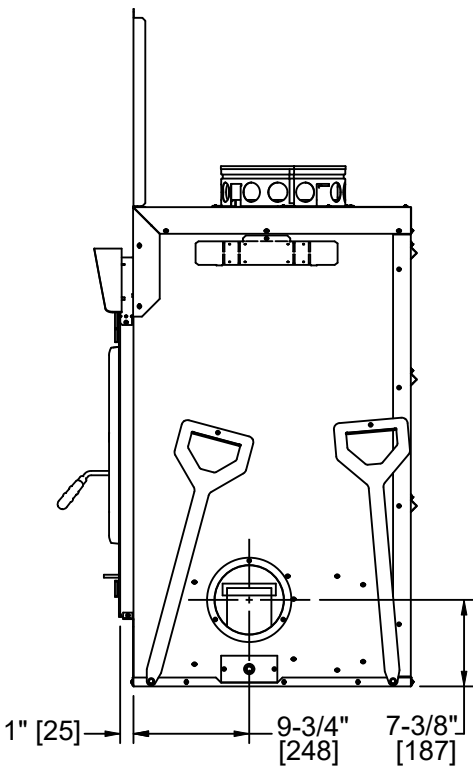
\*If interior of chase will be drywalled, add the thicknes of the drywall to this measurement.



TOP VIEW

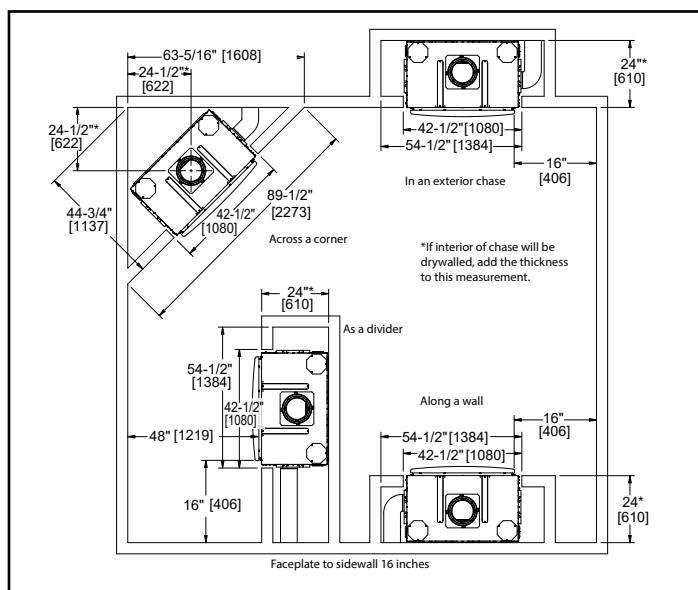


FRONT VIEW

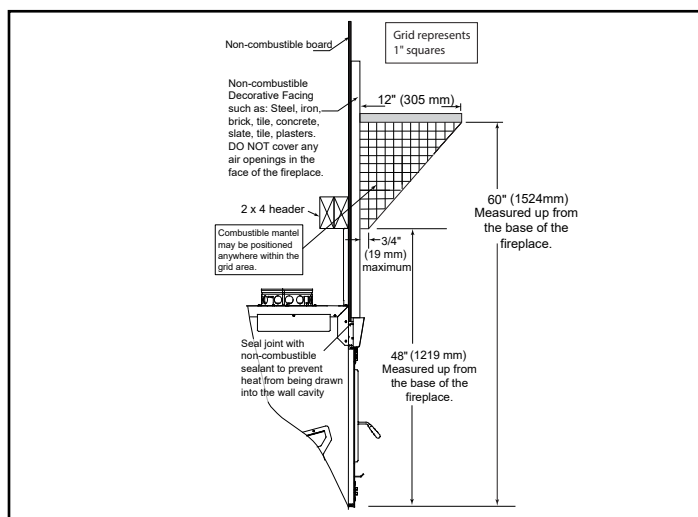


SIDE VIEW

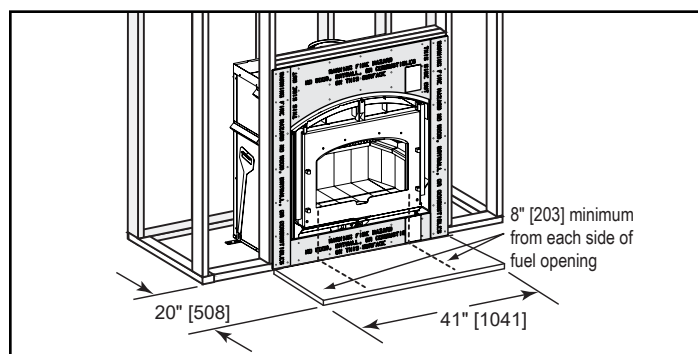
## APPLIANCE LOCATION



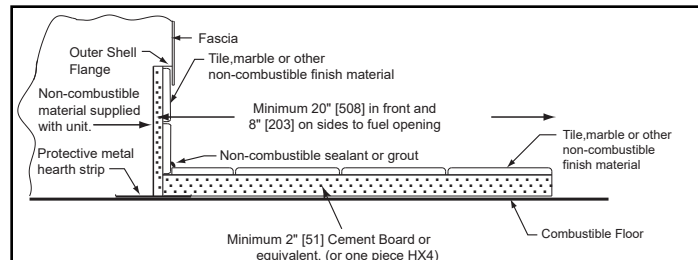
## MANTEL PROJECTIONS



## HEARTH EXTENSIONS

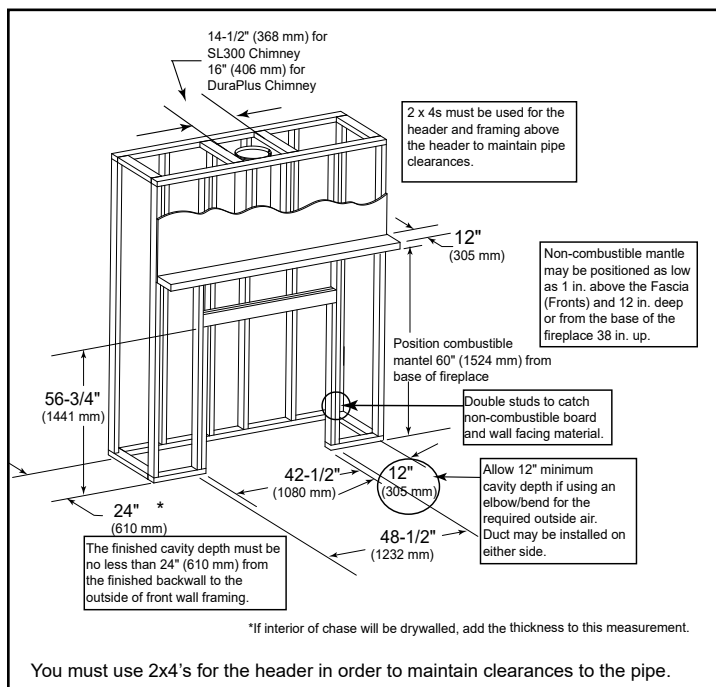


## HEARTH EXTENSION CONSTRUCTION

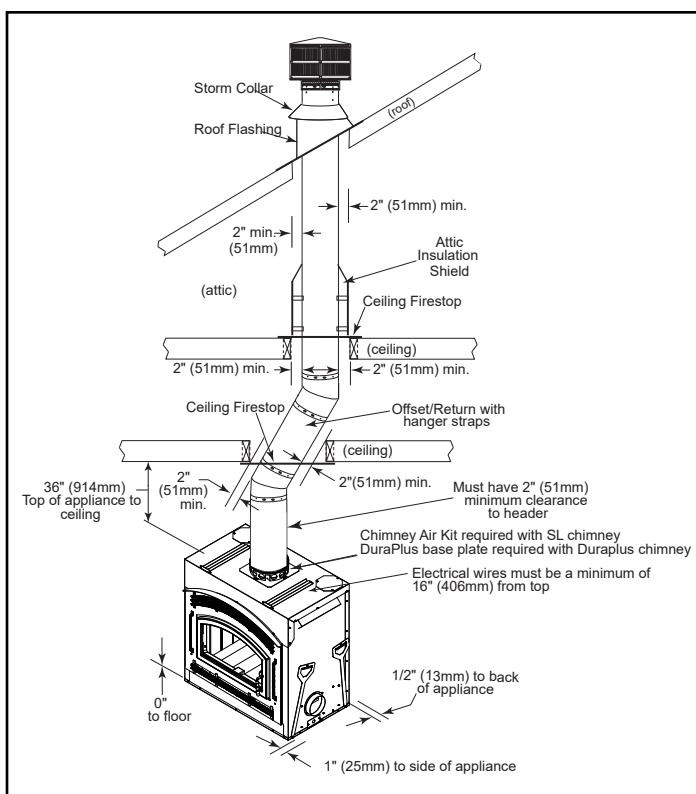


See install manual figure 7.8 for raised hearth extension.

## FRAMING DIMENSIONS



## CLEARANCE TO COMBUSTIBLES



### PRODUCT LISTING CODES

US	UL127-2011 (UM) 84-HUD
Canada	ULC-S610-M87 (A1998)

Additional information can be found online at [www.quadrafire.com](http://www.quadrafire.com)

Product information provided is not complete and is subject to change without notice. Product installation must adhere strictly to instructions accompanying product to avoid risk of fire and potential injury.

**QUADRA-FIRE**  
NOTHING BURNS LIKE A QUAD

Lakeville, MN Web: [quadrafire.com](http://quadrafire.com)  
Phone: 800-926-4356

UL LISTED

WFP/QDF/PIONEERII-C\_1119