

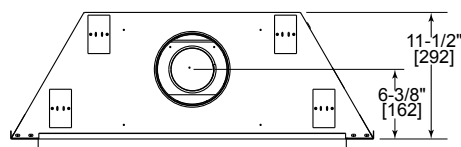


Please consult the manufacturer's installation manual for all details and requirements before making a final design layout decision.

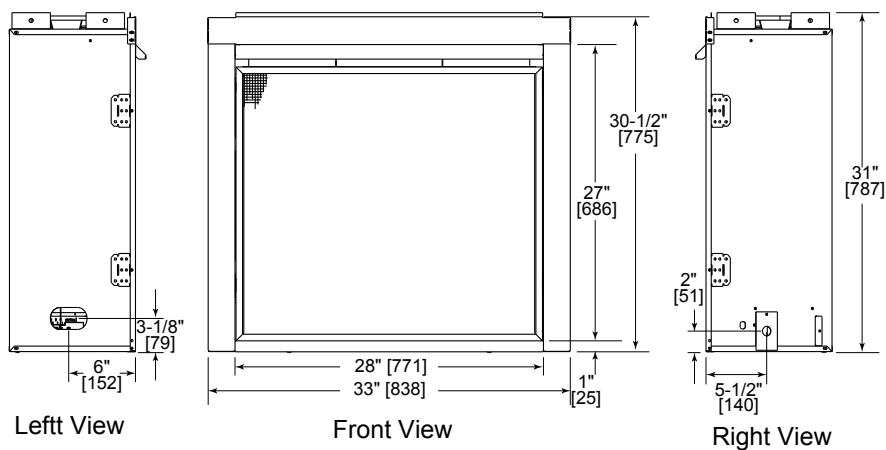
Aveo Direct Vent Gas Fireplace

MODEL	FRONT WIDTH		BACK WIDTH		HEIGHT		DEPTH		VIEWING AREA
ADVT3428I ADV3428I	Actual	Framing	Actual	Framing	Actual	Framing	Actual	Framing	28w x 27h
	33	34	19-3/4	34	31	31-3/4	11-1/2	12	

Top Vent Dimensions



Top View

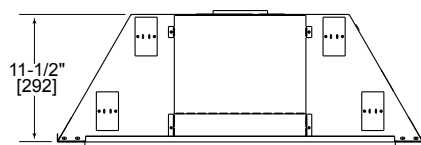


Left View

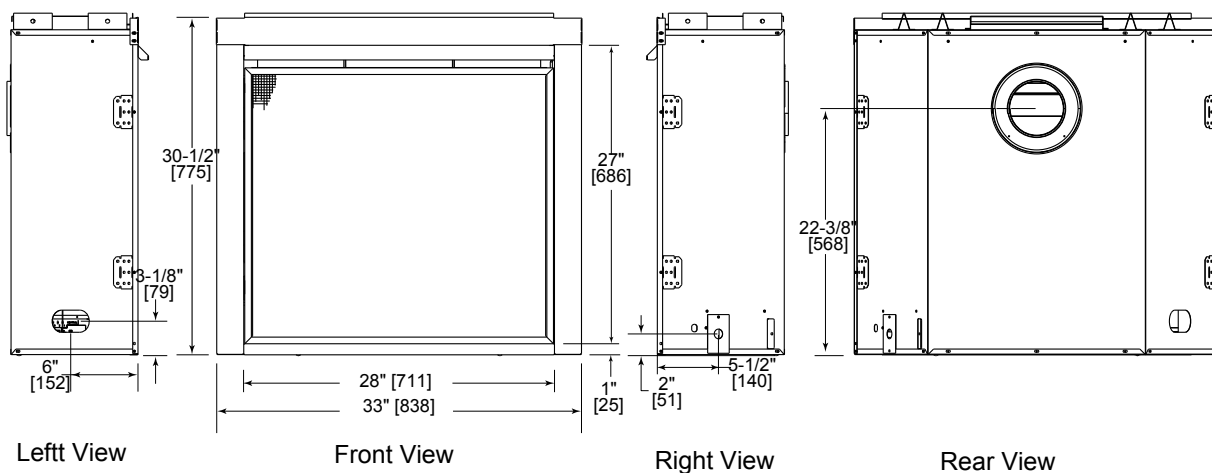
Front View

Right View

Rear Vent Dimensions



Top View



Left View

Front View

Right View

Rear View

FRAMING DIMENSIONS

AREA	TO COMBUSTIBLES (in inches)
CLEARANCE TO CEILING	30
COMBUSTIBLE/NON-COMBUSTIBLE FLOOR	0
SIDES OF APPLIANCE	0
FRONT OF APPLIANCE	36

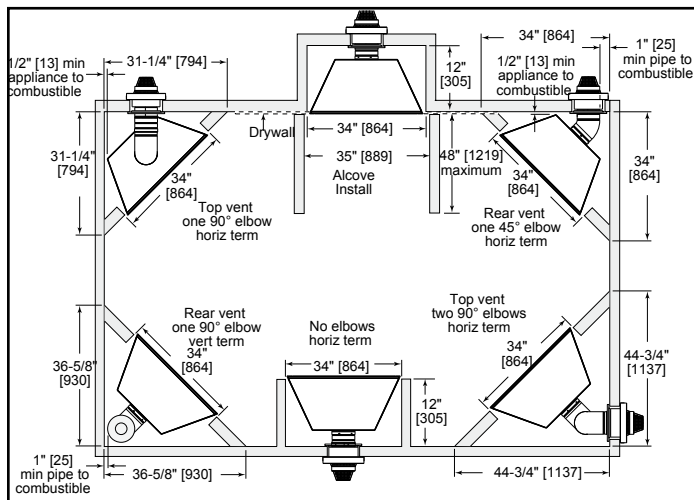


Diagram illustrating the dimensions and components of a combustibles test chamber:

- Top clearance: 30" [762] to ceiling
- Top edge clearance: 0" to level of standoffs
- Front edge clearance: 0"
- Side clearance: 36" [914]
- Label: Combustible Object (pointing to the interior of the chamber)

Diagram illustrating the vertical vent pipe installation dimensions:

- Vertical vent pipe diameter: 10"
- Horizontal vent pipe diameter: 12"
- Offset from horizontal vent pipe center to vertical vent pipe center: 1"
- Vertical vent pipe height from horizontal vent pipe center to top: *36-5/8" [930] Top
- Vertical vent pipe height from horizontal vent pipe center to rear: *23-3/8" [594] Rear

*Center of hole is 1" [25] above center of horizontal vent pipe.

30" minimum to ceiling

Measured from top of hood (in inches)

Hood Width (inches)	Required Clearance (inches)
3	3
4	4
5	5
6	6
7	7
8	8
9	9
10	10
11	11
12	12
13	13
14	14
15	15
16	16
17	17
18	18

Diagram illustrating the minimum clearance requirements for a fireplace mantel:

- Minimum clearance from the drywall: 1" [25] min.
- Minimum clearance from the mantel leg or perpendicular wall: 3-1/2" [89] min.

 UL LISTED **UL307B**

Product information provided is not complete and is subject to change without notice. Product installation must adhere strictly to instructions accompanying product to avoid risk of fire and potential injury.

Additional information can be found online at www.heatilator.com