

PRODUCT SPECIFICATIONS
MDV600 Manchester Direct Vent



GLASS VIEWING AREA

38-15/16" W x 22-3/16" H (864 Square Inches)

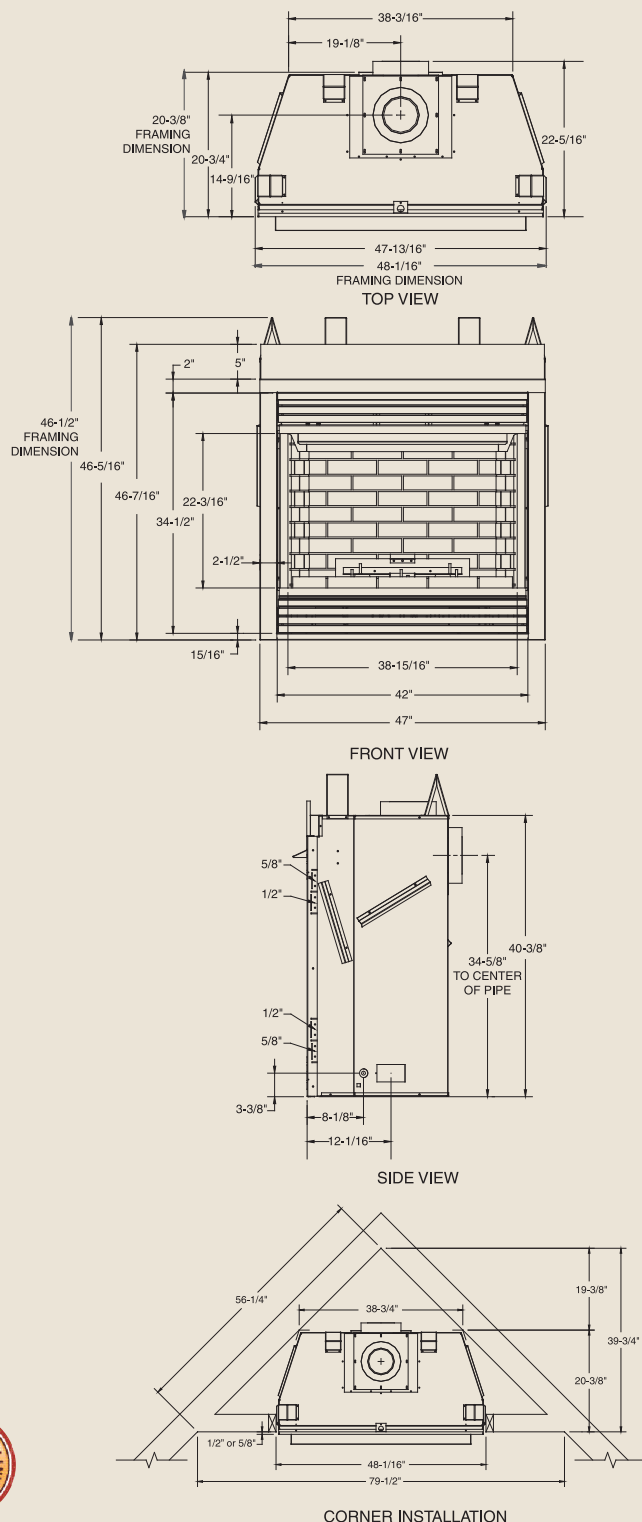
TECHNICAL INFORMATION

Max. Btu Input: 32,000 BTU/HR
 Ignition System: Signature Command™ System
 Gas Type: Natural or LP
 Flue Type: 4" x 7" Twist Lock, 4" x 7" T-Lock
 Termination: Rear/Top Vent Convertible
 Clearance to Flue for Interior: 3" Top, 1" Bottom and Sides**
 Clearance to Flue for Outside Wall: 1"
 Clearance to Fireplace: 0"
 CSA Design Certified

FIELD INSTALLED ACCESSORIES

Louvers: Brass, Pewter
 Medium Trim: Brass, Pewter, Black
 Curved Trim: Brass, Pewter, Black
 Firebrick: Cottage Clay or Cottage Red
 Variable Thermostat Controlled Dual Forced Air Blower (160 cfm) – BLOTSDV
 Signature Command Dual Forced Air Blower (160 cfm) - BLOTSDVSC
 Mesh Glass Cover
 Ambient Technologies™ Remote Controls and Thermostats
 Designer Facings

** If vertical rise is 7-1/2 feet or higher when in top vent configuration only, the vent clearance to combustibles is 1" on all sides of the horizontal run.



A Brand of Monessen Hearth Systems Co.
 149 Cleveland Drive, Paris, Kentucky 40361

www.monessenhearth.com



To avoid personal injury or property damage, the product described by this brochure must be installed, operated and maintained in strict compliance with the instructions packaged with the product and all applicable building or fire codes. Contact local building or fire officials about restrictions and installation inspection requirements. All photographs and drawings on this brochure are for illustrative purposes only and are not intended for, nor should they be used as a substitute for the instructions packaged with the unit. Appearance and specifications of the product are subject to change without notice. © 2009 Monessen Hearth Systems Co.