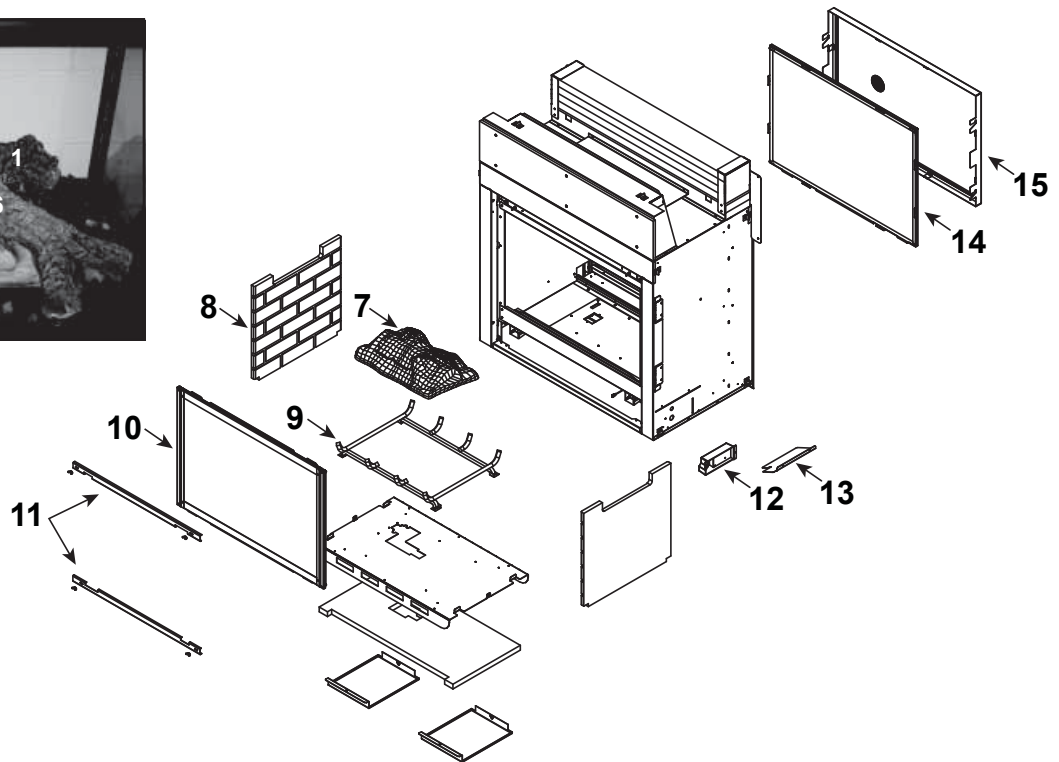
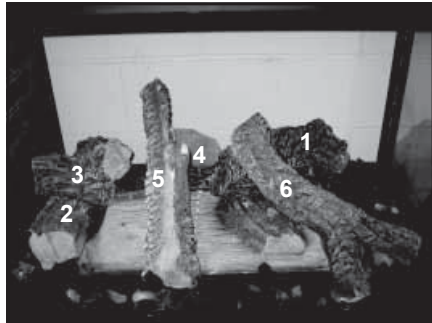


Log Set Assembly



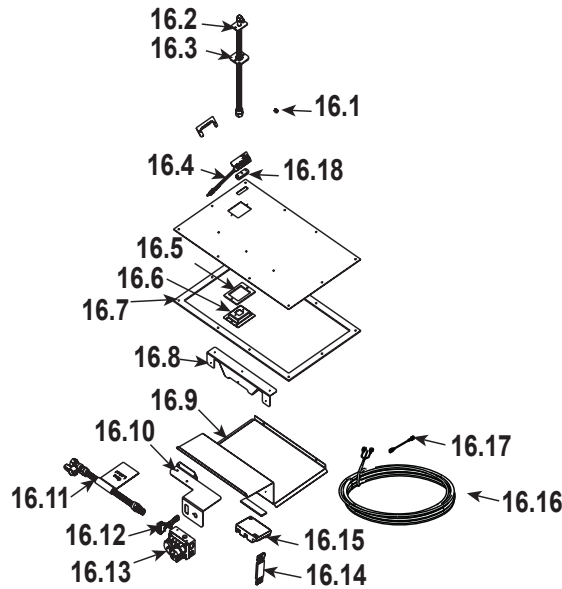
IMPORTANT: THIS IS DATED INFORMATION. Parts must be ordered from a dealer or distributor. **Hearth and Home Technologies does not sell directly to consumers.** Provide model number and serial number when requesting service parts from your dealer or distributor.



Stocked
in Depot

ITEM	DESCRIPTION	COMMENTS	PART NUMBER	
	Log Set Assembly		LOGS-MSR	Y
1	Log 1	Pre 5/15/16 Must order complete assembly	SRV2005-701	
2	Log 2		SRV2005-700	
3	Log 3		SRV2005-702	
4	Log 4		SRV2005-703	
5	Log 5		SRV2005-704	
6	Log 6		SRV2005-705	
7	Burner Assembly		2087-004	Y
8	Refractory, Side		SRV2005-730	
9	Grate Assembly		2005-012	
10	Indoor Glass Assembly		GLA-6TROC	Y
11	Glass Clip		2087-121	
12	Junction Box		SRV4021-013	Y
13	Junction Box Shield		2087-149	
14	Outdoor Glass Assembly		GLA-OUTDOOR2	
15	Mesh Assembly, Exterior		2368-030	
	Mesh		2368-225	

#16 Valve Assembly



IMPORTANT: THIS IS DATED INFORMATION. Parts must be ordered from a dealer or distributor.

Hearth and Home Technologies does not sell directly to consumers. Provide model number and serial number when requesting service parts from your dealer or distributor.



Stocked in Depot

ITEM	DESCRIPTION	COMMENTS	PART NUMBER	
16.1	Burner Orifice (NG) (#32C)		SRV582-832	Y
	Burner Orifice (Propane) (#50C)		582-850	Y
16.2	12" Flex Tube Assembly		383-302A	Y
16.3	Burner Neck Gasket		438-407	
16.4	Pilot Assembly NG		SRV2090-012	Y
	Pilot Assembly Propane		2090-013	Y
	Pilot Tube		SRV485-301	Y
16.5	Orifice Bracket Gasket		2087-110	
16.6	Orifice Bracket		2087-109	
16.7	Valve Plate Gasket		2087-112	
16.8	Valve L Bracket		674-168	
16.9	Valve Bracket		2087-117	
16.10	Valve Bracket		2087-116	
16.11	Flex Ball Valve Assembly		SRV302-320	Y
16.10	ON/OFF Rocker Switch		060-521A	Y
16.13	Valve NG		593-500	Y
	Valve Propane		SRV593-501	Y
16.14	Wire Assembly		SRV593-590	Y
16.15	Control Module		593-592	Y
16.16	Wall Switch Wire		SRV2118-170	Y
16.17	Jumper Wire		2155-033	Y
16.18	3-Hole Grommet		SRV2118-420	

Additional service part numbers appear on following page.



Service Parts

TWILIGHT-II-C

Beginning Manufacturing Date: Dec 2014
Ending Manufacturing Date: Active

IMPORTANT: THIS IS DATED INFORMATION. Parts must be ordered from a dealer or distributor. **Hearth and Home Technologies does not sell directly to consumers.** Provide model number and serial number when requesting service parts from your dealer or distributor.



Stocked in Depot

ITEM	DESCRIPTION	COMMENTS	PART NUMBER	
	Battery Pack		SRV593-594	Y
	Power Supply		SRV593-593	Y
	Glass Latch Assembly	Qty 2 req	2382-400	Y
	Lava Rock Bag		2005-790	
	Mineral Wool		050-721	
	Non-Combustible Boards (set only)		2108-030	
	Touch Up Paint	Exterior	SRV2087-999-A12	
		Interior	TUP-GBK-12	
	Cover Panel		2368-114	
	Deflector Panel		2086-136MBK	
	Flashing		2087-159	
	Hood-Exterior Side		2368-113	
	Wind Screen Assembly	Pre LC4673185	2368-004	
		Post LC4673185	2368-014	
	Conversion Kit NG		NGK-TWI	Y
	Conversion Kit Propane		LPK-TWI	Y
	Pilot Orifice NG		SRV593-528	Y
	Pilot Orifice Propane		SRV593-527	Y
	Regulator NG		SRVNGK-DXF	Y
	Regulator Propane		SRVLPK-DXF	Y