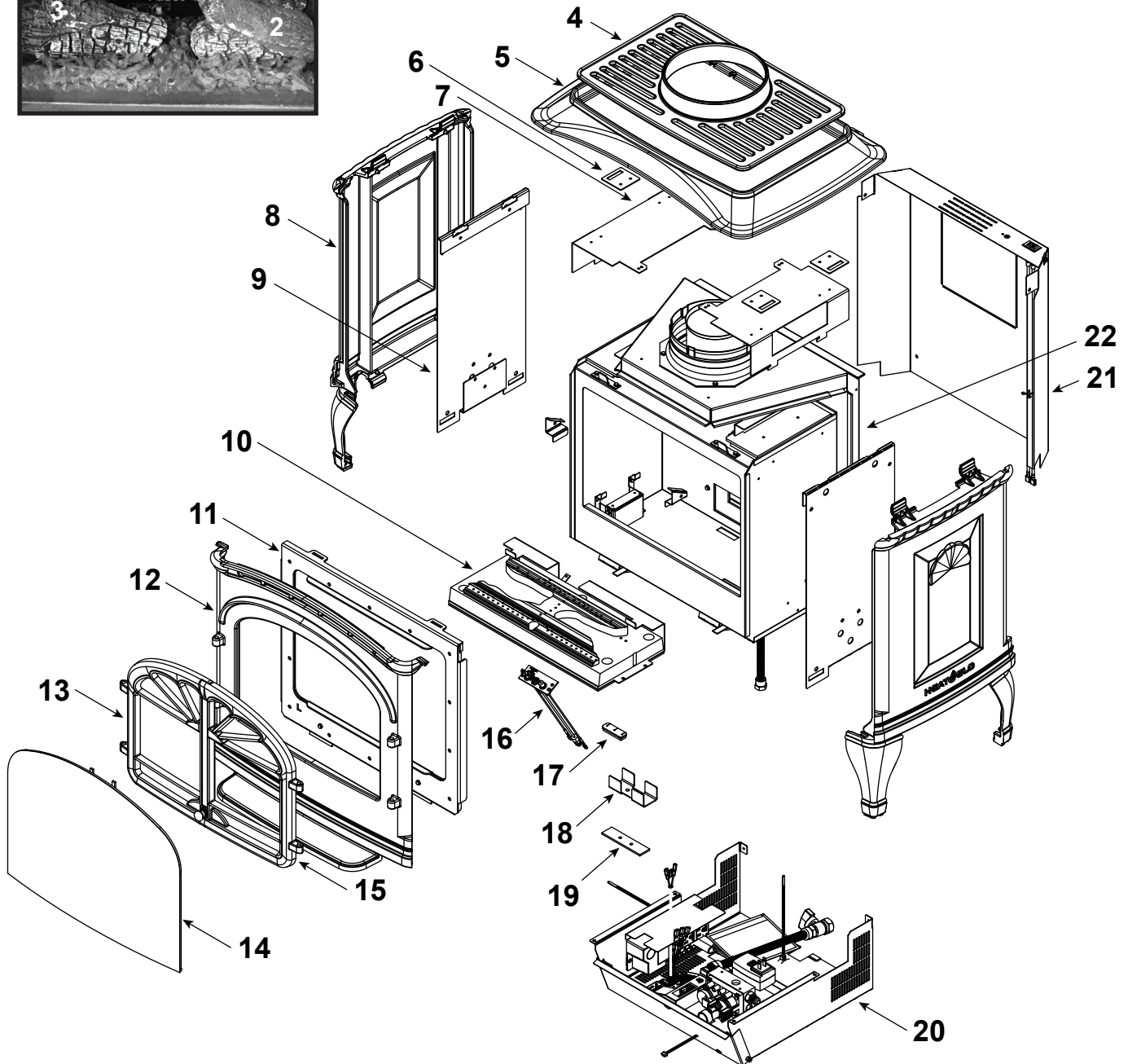


TiaraI-BK-IPI (Black) - End Manufacturing Date: April 2022
TiaraI-BR-IPI (Brown) - End Manufacturing Date: April 2022
TiaraI-CES-IPI (Espresso) - End Manufacturing Date: April 2020

Log Set Assembly



Part number list on following page.

No one builds a better fire

Beginning Manufacturing Date: Apr 2014
Ending Manufacturing Date: April 2022

IMPORTANT: THIS IS DATED INFORMATION. Parts must be ordered from a dealer or distributor. **Hearth and Home Technologies does not sell directly to consumers.** Provide model number and serial number when requesting service parts from your dealer or distributor.



**Stocked
at Depot**

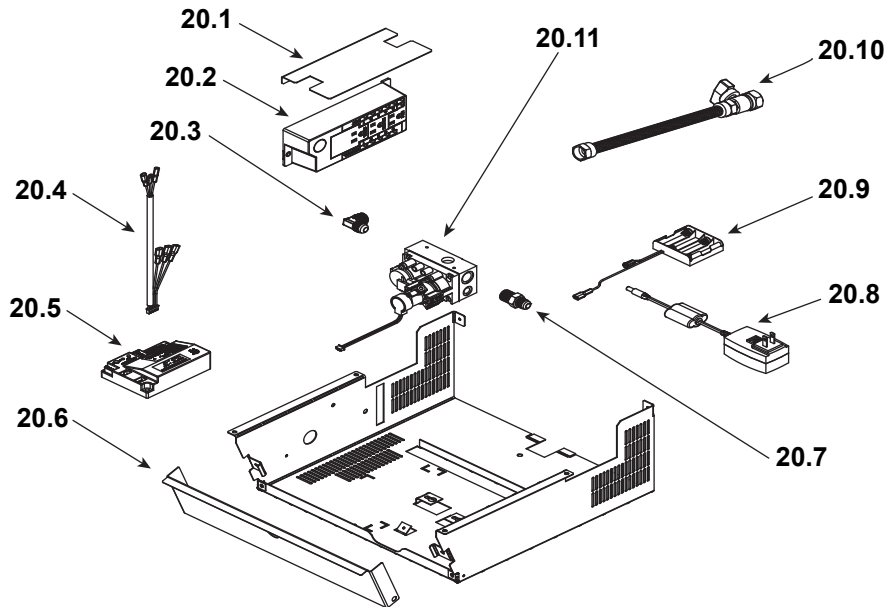
ITEM	DESCRIPTION	COMMENTS:	PART NUMBER	
	Log Set Assembly		LOGS-TS-IPI	Y
1	Log 1		SRV2342-701	
2	Log 2		SRV2342-702	
3	Log 3		SRV2342-703	
	SLP Stove Adaptor	No longer available	SLP-SAM	
4	Grill, Top Vent		7010-116	
5	Top	Black	7010-109BK	
		Brown	7010-109PBR	
		Espresso	7010-109CES	
6	Mounting Bracket, Cast	Qty 4 req	2342-131	
7	Upper Fan Shroud	Qty 2 req	2342-130	
8	Side, Left or Right	Black	7010-110BK	
		Brown	7010-110PBR	
		Espresso	7010-110CES	
9	Side Heat Shield	Qty 2 req	2342-108	
10	Conversion Kit w/Burner Assembly, NG	Sold as Set Only	NGKI-TIARAI	Y
	Conversion Kit w/Burner Assembly, Propane	Sold as Set Only	LPKI-TIARAI	Y
11	Glass Frame Assembly		GLA2342-019	Y
12	Front	Black	7010-111BK	
		Brown	7010-111PBR	
		Espresso	7010-111CES	
13	Door Left	Black	7010-113BK	
		Brown	7010-113PBR	
		Espresso	7010-113CES	
14	Screen, Tiara I		7010-040	
15	Door Right	Black	7010-112BK	
		Brown	7010-112PBR	
		Espresso	7010-112CES	
	Knob, Brass, .75, Propane	Pre 0081000432	456-0080	
	Knob, Brass, .75, NG	Pre 0081025696		
	Knob, Satin Nickel, .75, Propane	Post 0081000432	3-43-4560080-9	
	Knob, Satin Nickel, .75, NG	Post 0081025696		
16	Pilot Assembly, NG		SRV2090-012	Y
	Pilot Assembly, Propane		2090-013	Y
17	3-Hole Grommet		SRV2118-420	
18	Air Shutter		SRV2342-154	
19	Gasket , Air Shutter		2342-159	
20	Valve Assembly Tray		See Following Page	

Additional service part numbers appear on following page.

No one builds a better fire

Beginning Manufacturing Date: Apr 2014
Ending Manufacturing Date: April 2022

#20 Valve Assembly



IMPORTANT: THIS IS DATED INFORMATION. Parts must be ordered from a dealer or distributor. **Hearth and Home Technologies does not sell directly to consumers.** Provide model number and serial number when requesting service parts from your dealer or distributor.



Stocked at Depot

ITEM	DESCRIPTION	COMMENTS:	PART NUMBER	
20.1	Heat Shield, J-Box		2342-132	
20.2	Junction Box		SRV4021-013	Y
20.3	Male Elbow, 3/8" OD Flare x 3/8" NPT		SRV4021-045	
20.4	Wire Assembly		2166-304	Y
20.5	Module		SRV2166-338	Y
20.6	Access Door		2342-112	
20.7	Male Connector	Pkg of 5	303-315/5	Y
20.8	Switch, DC Regulator		SRV2326-131	Y
20.9	Battery Pack **		SRV2166-323	Y
20.10	24" Flex Tube		3-40-2098034	Y
20.11	Valve, NG		SRV2166-302	Y
	Valve, Propane		2166-303	Y
	Power Cord		832-2410	

**Fuse for battery pack can be sourced locally, not a warranty item. Specs are 250v, 1A fuse, 3/4" long

Additional service part numbers appear on following page.

No one builds a better fire

Beginning Manufacturing Date: Apr 2014
Ending Manufacturing Date: April 2022

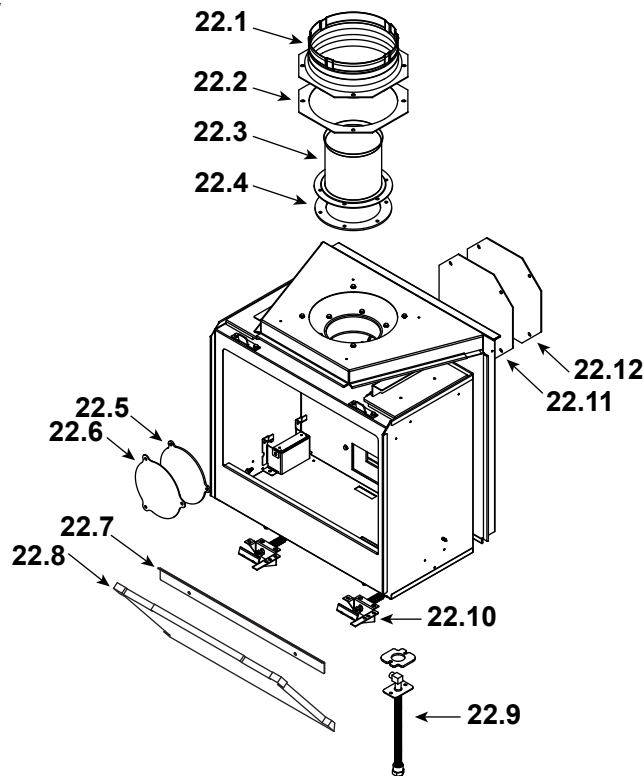
IMPORTANT: THIS IS DATED INFORMATION. Parts must be ordered from a dealer or distributor. **Hearth and Home Technologies does not sell directly to consumers.** Provide model number and serial number when requesting service parts from your dealer or distributor.



Stocked at Depot

ITEM	DESCRIPTION	COMMENTS	PART NUMBER	
21	Back Shroud, Tiara I-IPI	Pre 0081025816	2342-129	
		Post 0081025816	2342-144	
	Back Shroud, Tiara I-IPIL	Pre0081000516	2342-129	
		Post 0081000516	2342-144	
	On/Off, Switch		SRV32D0232	Y
	Wire Assembly		3-20-2159315	Y

#22 Firebox Assembly



22.1	Starting Collar		SRV2189-002	
22.2	Gasket, Adaptor		SRV460-0610	
22.3	Flue Assembly		SRV2340-025	
22.4	Gasket, Spacer		2340-203	
22.5	Gasket, Flue Spacer		2340-135	
22.6	Flue Cover		SRV2340-134	
22.7	Lower Baffle Support		SRV2342-121	
22.8	Baffle		2342-146	
22.9	Bulkhead		SRV7000-156	Y
22.10	Glass Clip Assembly	Pkg of 2	33858/2	Y
22.11	Cover Plate Gasket		7010-160	
22.12	Cover Plate		SRV7010-159	

IMPORTANT: THIS IS DATED INFORMATION. Parts must be ordered from a dealer or distributor. **Hearth and Home Technologies does not sell directly to consumers.** Provide model number and serial number when requesting service parts from your dealer or distributor.



Stocked at Depot

ITEM	DESCRIPTION	COMMENTS	PART NUMBER	
	Blower Assembly (Optional)		GFK-160A	
	Brick Set (Optional)		BRICK-TS	
	Upper Refractory Bracket	Qty 2 req	SRV2342-122	
	Grill, Rear Vent		RV-TI-IPI	
	Orifice NG (#46C)		582-846	Y
	Orifice Propane (#55C)		582-855	Y
	Hinge Pins, Gold	Pkg of 2	844-5750	Y
	Hinge Pins, Nickel	Pkg of 2	1-00-4331590	Y
	Magnet, Round		SRV7000-140	Y
	Noise Kit		1-00-5051001	
	RC100 (Wall Control)		RC100-HNG	
	RC200 (Remote Control)		RC200-HNG	
	RC300 (Remote Control)		RC300-HNG	
	Retrofit Kit, Blower		1-00-2340109	
	Component Pack	No longer available	SRV2342-090	
		No longer available	SRV2342-091	
	Leveling Assembly		SRV7000-000	
	Mineral Wool		050-721	
	Screw, 8-32 x 7/8	pkg of 24	229-1100/24	Y
	Touch-Up Paint, Black , NG IPI	Pre 0081000001	812-0910	
		Post 0081025001	3-42-19905	
	Touch-Up Paint, Black , Propane IPI	Pre 0081025001	812-0910	
		Post 0081000001	3-42-19905	
	Touch-Up Paint	Brown	1-00-0014	
		Espresso	Touchup-CES	
		Sienna Bronze	PAINT1-CSB/CES	
	Warming Shelves (Optional)	Black	WS-TIARA-BK	
		No longer available	WS-TIARA-BR	
		No longer available	WS-TIARA-CES	
Conversion Kits				
	Orifice, NG, (42C)		582-842	Y
	Orifice, Propane, (54C)		SRV582-854	Y
	Conversion Kit NG		NGKI-TIARAI	Y
	Conversion Kit Propane		LPKI-TIARAI	Y
	Pilot Orifice NG		SRV593-528	Y
	Pilot Orifice Propane		SRV593-527	Y
	Regulator NG		NGK-DXV-50	Y
	Regulator Propane		SRVLPK-DXV-50	Y