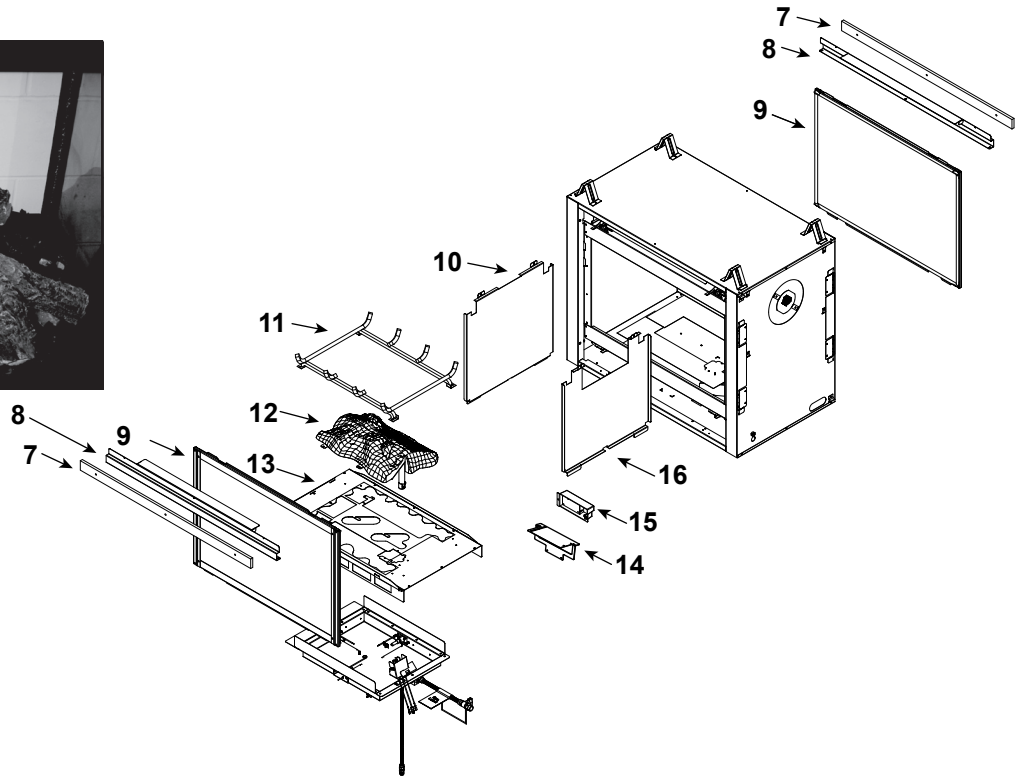
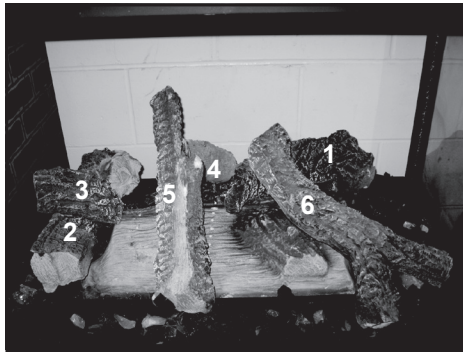


Log Set Assembly



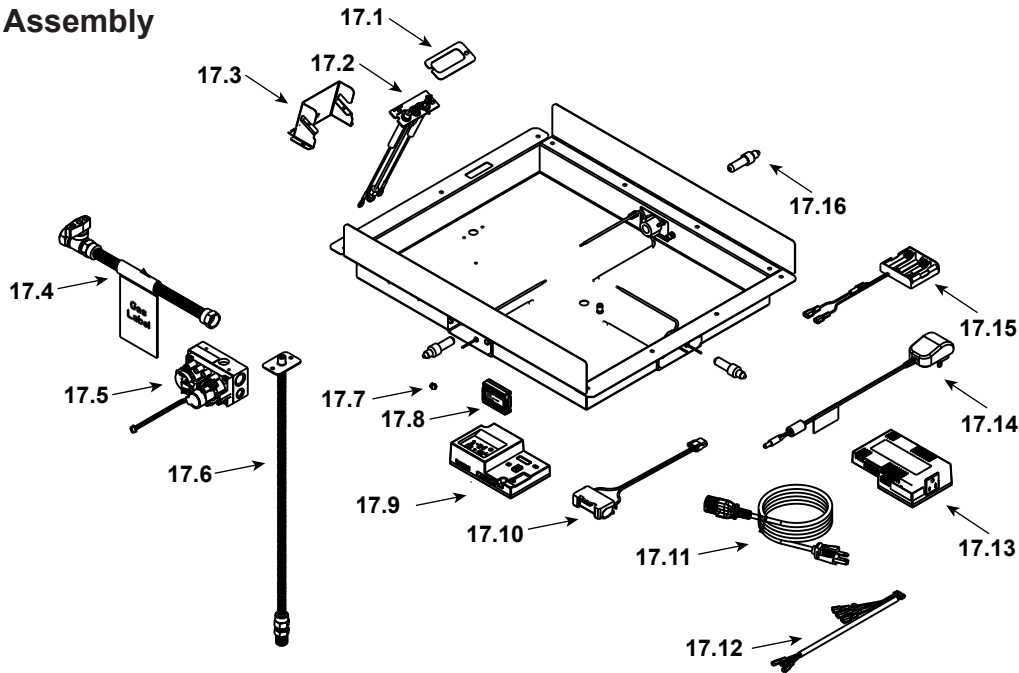
IMPORTANT: THIS IS DATED INFORMATION. Parts must be ordered from a dealer or distributor. **Hearth and Home Technologies does not sell directly to consumers.** Provide model number and serial number when requesting service parts from your dealer or distributor.



Stocked at Depot

| ITEM | DESCRIPTION | COMMENTS | PART NUMBER | |
|------|---|-----------|--------------|---|
| | Log Set Assembly | | LOGS-MSR | Y |
| 1 | Log 1 | | SRV2005-701 | |
| 2 | Log 2 | | SRV2005-700 | |
| 3 | Log 3 | | SRV2005-702 | |
| 4 | Log 4 | | SRV2005-703 | |
| 5 | Log 5 | | SRV2005-704 | |
| 6 | Log 6 | | SRV2005-705 | |
| 7 | Non-Comb | Qty 2 req | 2130-196 | |
| 8 | Sheetrock Ledge (Side) | Qty 2 req | 2128-118 | |
| 9 | Glass Door Assembly | Qty 2 req | GLA-6TROC | Y |
| 10 | Refractory | | 2128-117 | |
| 11 | Grate Assembly | | SRV2005-012 | |
| 12 | Burner NG, Propane | | 2005-006 | Y |
| 13 | Ember Mesh Assembly | | 2176-008 | |
| 14 | Junction Box Bracket | | 2128-128 | |
| 15 | Junction Box | | SRV4021-013 | Y |
| 16 | Refractory (Air Passage Side) | | 2128-116 | |
| | Surround Overlay (contains overlay for top, bottom and sides) | | SRV2128-FACE | |

#17 Valve Assembly



IMPORTANT: THIS IS DATED INFORMATION. Parts must be ordered from a dealer or distributor. **Hearth and Home Technologies does not sell directly to consumers.** Provide model number and serial number when requesting service parts from your dealer or distributor.



**Stocked
at Depot**

| ITEM | DESCRIPTION | COMMENTS | PART NUMBER | Stocked at Depot |
|-------|---------------------------|----------------------------------|-------------|------------------|
| 17.1 | Wind Baffle | | 2176-126 | |
| 17.2 | Pilot Assembly NG | | 2478-012 | Y |
| | Pilot Assembly Propane | Convert 2478-012 with SRV593-527 | | Y |
| 17.3 | Pilot Bracket | | 2176-118 | |
| 17.4 | Flex Ball Valve Assembly | | SRV302-320 | Y |
| 17.5 | Valve NG | | SRV2166-302 | Y |
| | Valve Propane | | 2166-303 | Y |
| 17.6 | Flexible Gas Connector | | 2005-009 | Y |
| 17.7 | Orifice NG (#32C) | | SRV582-832 | Y |
| | Orifice Propane (#50C) | | 582-850 | Y |
| 17.8 | Module, RF FCC | | SRV2326-120 | Y |
| 17.9 | Module, IFT Control | | SRV2326-130 | |
| 17.10 | Connector Block Assembly | | 2482-019 | Y |
| 17.11 | Cable, B Type AC Module | | SRV2326-152 | Y |
| 17.12 | Harness, IFT 6 Pin Wiring | | SRV2326-132 | Y |
| 17.13 | Module, B Type AC | | SRV2326-150 | Y |
| 17.14 | Transformer, 6 Volt Wall | | SRV2326-131 | Y |
| 17.15 | Battery Pack ** | | SRV2326-134 | Y |
| 17.16 | Bulb, Halogen | | 700-542 | Y |

**Fuse for battery pack can be sourced locally, not a warranty item. Specs are 250v, 3A fuse, 3/4" long

Additional service part numbers appear on following page.

