

IMPORTANT: THIS IS DATED INFORMATION. Parts must be ordered from a dealer or distributor. **Hearth and Home Technologies does not sell directly to consumers.** Provide model number and serial number when requesting service parts from your dealer or distributor.

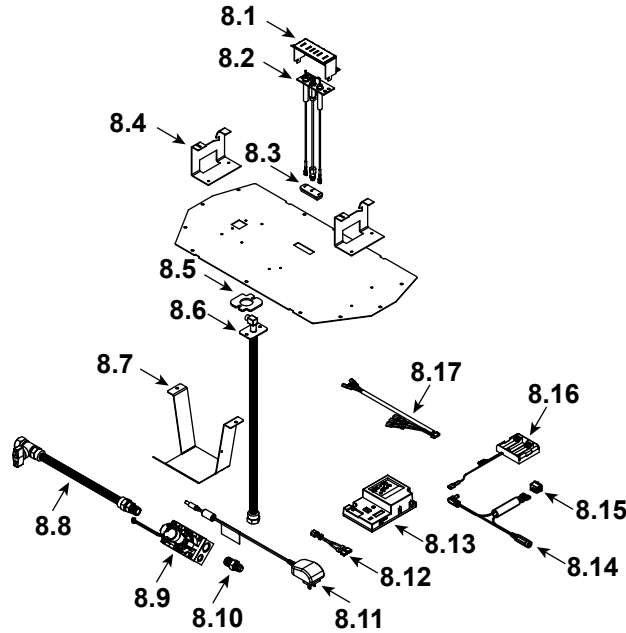


Stocked at depot

| ITEM | DESCRIPTION | COMMENTS | PART NUMBER | |
|------|--------------------------|----------|---------------------|---|
| 1 | Non-Combustible Support | | 2492-104 | |
| 2 | Top Fill | | 2492-135 | |
| 3 | Non-Combustible Assembly | | 2492-079 | |
| 4 | Base Pan | | 2492-113 | |
| 5 | Burner Assembly | | 2492-007 | Y |
| 6 | Glass Door Assembly | | GLA-32HTL | Y |
| 7 | Lower Panel | | 2616-104 | |
| 8 | Valve Assembly | | Refer to Valve Page | |
| 9 | Junction box | | SRV4021-013 | Y |
| 10 | Heat Shield, Components | | 2493-129 | |

Additional service part numbers appear on following page.

#8 Valve Assembly



IMPORTANT: THIS IS DATED INFORMATION. Parts must be ordered from a dealer or distributor. **Hearth and Home Technologies does not sell directly to consumers.** Provide model number and serial number when requesting service parts from your dealer or distributor.



**Stocked
at Depot**

| ITEM | DESCRIPTION | COMMENTS | PART NUMBER | |
|------|--------------------------------|----------|-------------|---|
| 8.1 | Pilot Shield | | 2491-123 | |
| 8.2 | Pilot Assembly NG | | SRV2106-169 | Y |
| | Pilot Assembly Propane | | SRV2106-170 | Y |
| 8.3 | Grommet | | SRV2118-420 | |
| 8.4 | Burner Support, Left and Right | 1 Set | 2491-169 | |
| 8.5 | Gasket | | 2025-407 | |
| 8.6 | Bulkhead W/Flex Tube | | 4021-428 | Y |
| 8.7 | Valve Bracket | | 2491-153 | |
| 8.8 | Flex Ball Valve Assembly, 12" | | SRV302-320 | Y |
| 8.9 | Valve NG | | SRV2166-302 | Y |
| | Valve Propane | | 2166-303 | Y |
| 8.10 | Male Connector | Pkg of 5 | 303-315/5 | Y |
| 8.11 | Transformer, 6 Volt Wall | | SRV2326-131 | Y |
| 8.12 | Jumper Wire | | SRV2187-198 | Y |
| 8.13 | Module, Control IFT | | SRV2326-130 | Y |
| 8.14 | Reset Switch Wire | | 2550-135 | Y |
| 8.15 | Reset Switch | | SRV2206-298 | Y |
| 8.16 | Battery Holder 4AA, IFT | | SRV2326-134 | Y |
| 8.17 | Harness, IFT 6 Pin Wiring | | SRV2326-132 | Y |
| | Orifice NG (#45C) | | SRV582-845 | Y |
| | Orifice Propane (1.25C) | | 582-8125 | Y |

Additional service part numbers appear on following page.

Beginning Manufacturing Date: Dec 2017

Ending Manufacturing Date: Oct 2019

IMPORTANT: THIS IS DATED INFORMATION. Parts must be ordered from a dealer or distributor. **Hearth and Home Technologies does not sell directly to consumers.** Provide model number and serial number when requesting service parts from your dealer or distributor.



Stocked at Depot

| ITEM | DESCRIPTION | COMMENTS | PART NUMBER | |
|------------------------|--|----------|---------------|---|
| | Exhaust Restrictor | | 530-299 | |
| | Gasket Assembly Contains burner neck, shutter bracket, vent, seal cap, valve plate, and air passage gaskets | | 2113-080 | |
| | Touch Up Paint | | TUP-GBK-12 | |
| | Thermostat Wire | | SRV2118-170 | Y |
| | Clean Face Front | Black | CFTF-32-BK | |
| | | | | |
| | | | | |
| | | | | |
| | | | | |
| | | | | |
| | | | | |
| | | | | |
| | | | | |
| | | | | |
| | | | | |
| | | | | |
| | | | | |
| | | | | |
| | | | | |
| | | | | |
| | | | | |
| | | | | |
| | | | | |
| | | | | |
| | | | | |
| Conversion Kits | | | | |
| | Conversion Kit NG | | NGK-32LINEAR | Y |
| | Conversion Kit Propane | | LPK-32LINEAR | Y |
| | Pilot Orifice NG | | SRV593-528 | Y |
| | Pilot Orifice Propane | | SRV593-527 | Y |
| | Regulator NG | | NGK-DXV-50 | Y |
| | Regulator Propane | | SRVLPK-DXV-50 | Y |