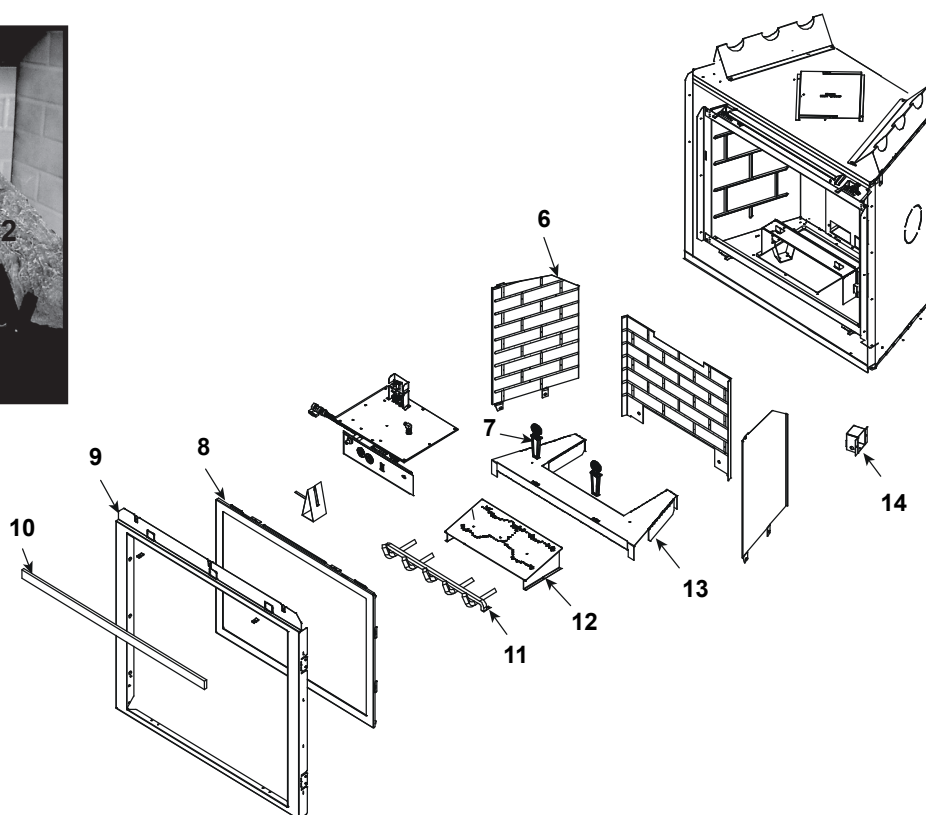


### Log Set Assembly



IMPORTANT: THIS IS DATED INFORMATION. Parts must be ordered from a dealer or distributor. **Hearth and Home Technologies does not sell directly to consumers.** Provide model number and serial number when requesting service parts from your dealer or distributor.

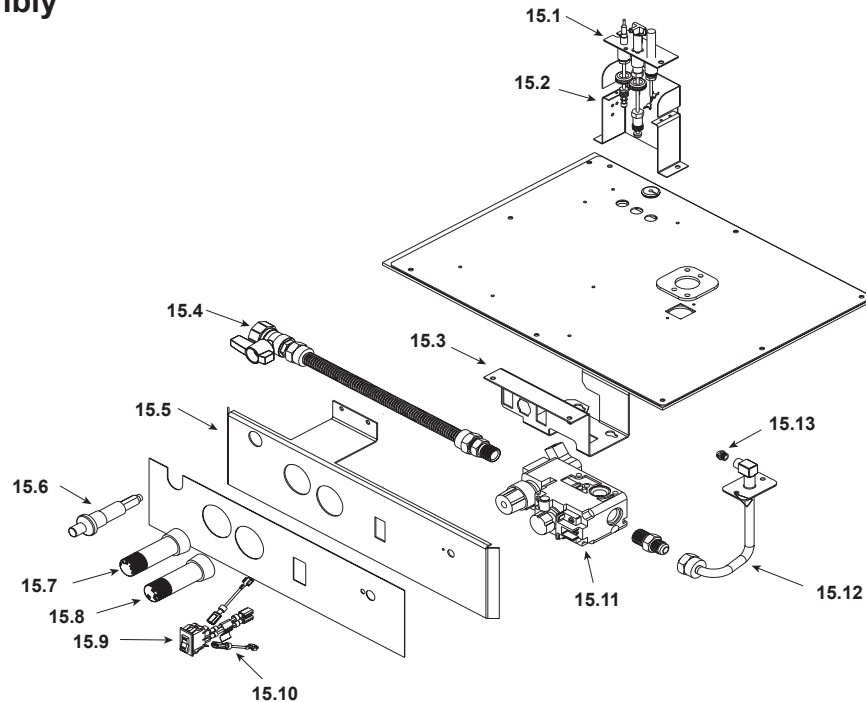


**Stocked  
at Depot**

ITEM	DESCRIPTION	COMMENTS	PART NUMBER	
	Log Set Assembly		LOGS-2017	Y
1	Log 1	<b>No longer available, Must order complete assembly</b>	SRV2016-701	
2	Log 2		SRV385-736	
3	Log 3		SRV278-704	
4	Log 4		SRV2018-704	
5	Log 5		SRV780-707	
6	Refractory Kit (Sold as set only)	<b>No longer available</b>	BRICK-295	
7	Andirons, Cast		SRV434-0450	
8	Glass Door Assembly		GLA-6TROC	Y
9	Surround	<b>No longer available</b>	SRV2101-260	
10	Insulation Board	<b>No longer available</b>	385-401	
11	Log Grate	<b>No longer available</b>	2017-001	
12	Burner NG		2017-003	Y
13	Base Refractory NG, LP	<b>No longer available</b>	292-124	
14	Junction Box		SRV4021-013	Y

Additional service part numbers may appear on following page.

## #15 Valve Assembly



IMPORTANT: THIS IS DATED INFORMATION. Parts must be ordered from a dealer or distributor. **Hearth and Home Technologies does not sell directly to consumers.** Provide model number and serial number when requesting service parts from your dealer or distributor.



**Stocked  
at Depot**

ITEM	DESCRIPTION	COMMENTS	PART NUMBER	
15.1	Pilot Assembly NG		4021-736	Y
	Pilot Assembly LP		4021-737	Y
	Pilot Tube		SRV485-301	Y
	Thermocouple		446-511	Y
	Thermopile		2103-512	Y
15.2	Pilot Bracket	No longer available	385-164	
15.3	Valve Bracket	No longer available	2025-101	
15.4	Flex Ball Valve Assembly		SRV302-320	Y
15.5	Control Panel	No longer available	295-119	
15.6	Piezo Ignitor		291-513	Y
15.7	Flame Control Knob	No longer available	571-531	
15.8	Pilot Control Knob	No longer available	571-530	
15.9	ON/OFF Rocker Switch		060-521A	Y
15.10	Jumper Wire	No longer available	049-552A	
15.11	Valve NG		060-522	Y
	Valve LP		060-523	Y
15.12	Flexible Gas Connector		383-302A	Y
15.13	Burner Orifice NG (#36C)		582-836	Y
	Burner Orifice LP (#51C)		SRV582-851	Y

Additional service part numbers may appear on following page.

**Beginning Manufacturing Date: Aug 2003**

Ending Manufacturing Date: Jan 2007

**IMPORTANT: THIS IS DATED INFORMATION.** Parts must be ordered from a dealer or distributor. **Hearth and Home Technologies does not sell directly to consumers.** Provide model number and serial number when requesting service parts from your dealer or distributor.



## Stocked at Depot

[illegible]