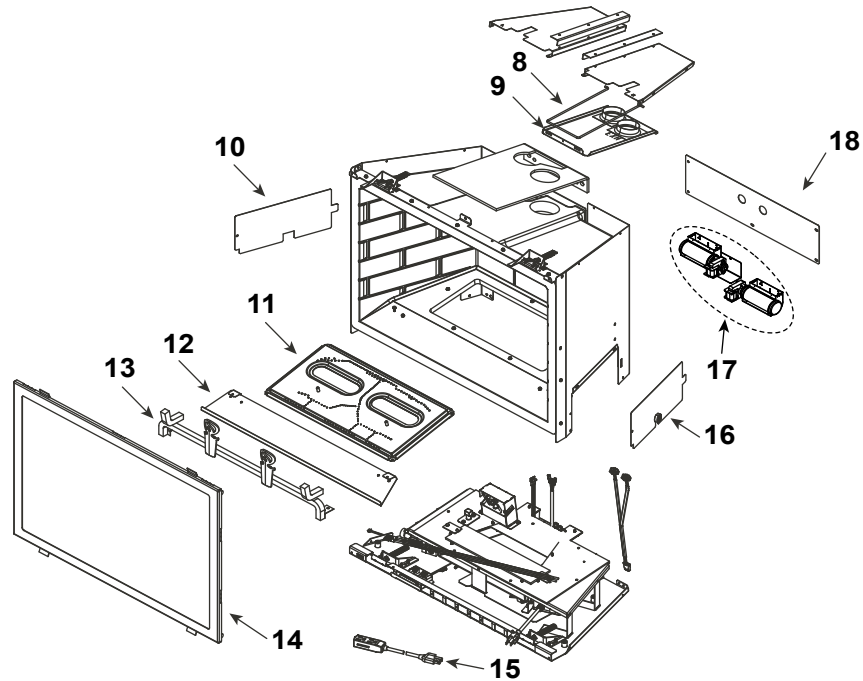
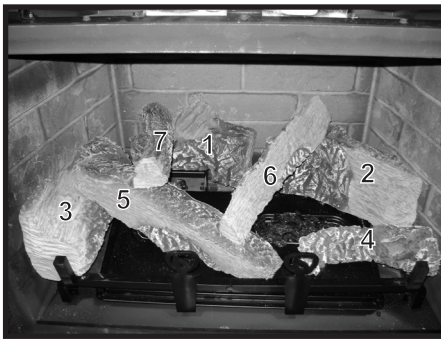


Log Set Assembly



IMPORTANT: THIS IS DATED INFORMATION. Parts must be ordered from a dealer or distributor. **Hearth and Home Technologies does not sell directly to consumers.** Provide model number and serial number when requesting service parts from your dealer or distributor.

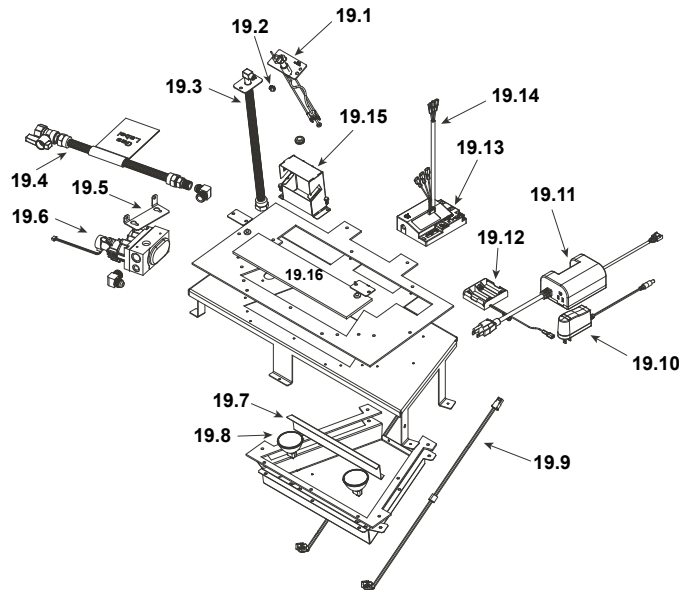


Stocked at Depot

| ITEM | DESCRIPTION | COMMENTS | PART NUMBER | |
|------|---------------------------|--|--------------|---|
| | Log Assembly | | LOGS-QFI30FB | Y |
| 1 | Log 1 | No longer available, Must order complete assembly | SRV2221-701 | |
| 2 | Log 2 | | SRV2221-702 | |
| 3 | Log 3 | | SRV2221-703 | |
| 4 | Log 4 | | SRV2221-704 | |
| 5 | Log 5 | | SRV2221-705 | |
| 6 | Log 6 | | SRV2221-706 | |
| 7 | Log 7 | | SRV2221-707 | |
| 8 | Slide Plate Handle | | 2019-201 | |
| 9 | Slide Plate Assembly | | 2201-012 | |
| | Gasket, Termination Plate | | 2201-401 | |
| 10 | Cover Plate, Left | No longer available | 2202-113 | |
| 11 | Burner Assembly | No longer available | 2221-007 | |
| 12 | Media Tray | | 2201-112 | |
| 13 | Grate Assembly | No longer available | 2221-016 | |
| | | Grate with no Andirons | SRV2221-017 | |
| 14 | Glass Door Assembly | | GLA-30FB | Y |
| 15 | Power Cord Assembly | | 2201-024 | Y |
| 16 | Cover Plate, Right | No longer available | 2202-114 | |
| 17 | Blower Assembly | | GFK-210-C | |
| 18 | Cover Plate, Back | No longer available | SRV2202-104 | |

Additional service part numbers on following page.

#19 Valve Assembly



IMPORTANT: THIS IS DATED INFORMATION. Parts must be ordered from a dealer or distributor. **Hearth and Home Technologies does not sell directly to consumers.** Provide model number and serial number when requesting service parts from your dealer or distributor.



**Stocked
at Depot**

| ITEM | DESCRIPTION | COMMENTS | PART NUMBER | |
|-------|--------------------------|--------------------------------------|--------------------------------------|---|
| 19.1 | *Pilot Assembly NG | | Call Tech Service with Serial number | |
| | *Pilot Assembly LP | | | |
| 19.2 | Burner Orifice NG (#33C) | | 582-833 | Y |
| | Burner Orifice LP (#50C) | | 582-850 | Y |
| 19.3 | Flex Assembly | | 383-302A | Y |
| 19.4 | Flex Ball Valve Assembly | | 2201-108 | Y |
| 19.5 | Valve Bracket | No longer available | SRV2202-108 | |
| 19.6 | Valve NG | | SRV2166-302 | Y |
| | Valve LP | | 2166-303 | Y |
| 19.7 | Air Passage Divider | | 2201-144 | |
| 19.8 | Ember Bulb | Qty 2 req | 2201-150 | Y |
| 19.9 | Light Wire Assembly | No longer available | 2201-011 | |
| 19.10 | Transformer, 6 Volt Wall | | SRV2326-131 | Y |
| 19.11 | Auxilliary Box | | SRV2166-335 | Y |
| | AUX Extension Wire | No longer available | 2201-155 | |
| 19.12 | Battery Pack** | | SRV2166-323 | Y |
| 19.13 | Module | | 2166-347 | Y |
| 19.14 | Wire Assembly | | 2201-304 | Y |
| 19.15 | *Pilot Bracket | Call Tech Service with Serial number | | |
| 19.16 | Ember Glass | | 2201-115 | Y |
| | Rocker Switch | | SRV2206-299 | Y |

**Fuse for battery pack can be sourced locally, not a warranty item. Specs are 250v, 1A fuse, 3/4" long

*Call Tech Service with serial number for correct conversion and/or possible upgrade pilot kit

Additional service part numbers on following page.

IMPORTANT: THIS IS DATED INFORMATION. Parts must be ordered from a dealer or distributor. **Hearth and Home Technologies does not sell directly to consumers.** Provide model number and serial number when requesting service parts from your dealer or distributor.



Stocked
at Depot

| ITEM | DESCRIPTION | COMMENTS | PART NUMBER | Stocked at Depot |
|------|------------------------------|---------------------|--------------------------------------|------------------|
| | Ember Rocks | | 2201-853 | |
| | Glass Clip Support Assembly | Pkg of 2 | 33858/2 | Y |
| | Glass Latch Support Assembly | Qty 2 req | 2146-413 | Y |
| | Lava Rock | | SRV4021-296 | |
| | Mineral Wool | | 050-721 | |
| | Patch Kit, Firebrick | | PATCHKIT-FB | |
| | Remote | | RC300-QDF | |
| | Stainless Steel Liner | | 768-380A | |
| | Touch up Paint | | TUP-GBK-12 | |
| | Wire Assembly, Module Reset | No longer available | 2201-030 | |
| | Touch Up Paint, Fiber | | STRATFORD-KIT | |
| | EMC Filter | No longer available | 2201-198 | |
| | Firescreen Front | Black | FS-FBQF30-BK | |
| | | | | |
| | | | | |
| | | | | |
| | | | | |
| | | | | |
| | | | | |
| | | | | |
| | | | | |
| | | | | |
| | | | | |
| | | | | |
| | | | | |
| | | | | |
| | | | | |
| | | | | |
| | | | | |
| | | | | |
| | | | | |
| | | | | |
| | *Conversion Kit NG | | Call Tech Service with Serial number | |
| | *Conversion Kit LP | | | |
| | *Pilot Orifice NG | | Call Tech Service with Serial number | |
| | *Pilot Orifice LP | | | |
| | Regulator NG | | NGK-DXV-50 | Y |
| | Regulator LP | | SRVLPK-DXV-50 | Y |

*Call Tech Service with serial number for correct conversion and/or possible upgrade pilot kit