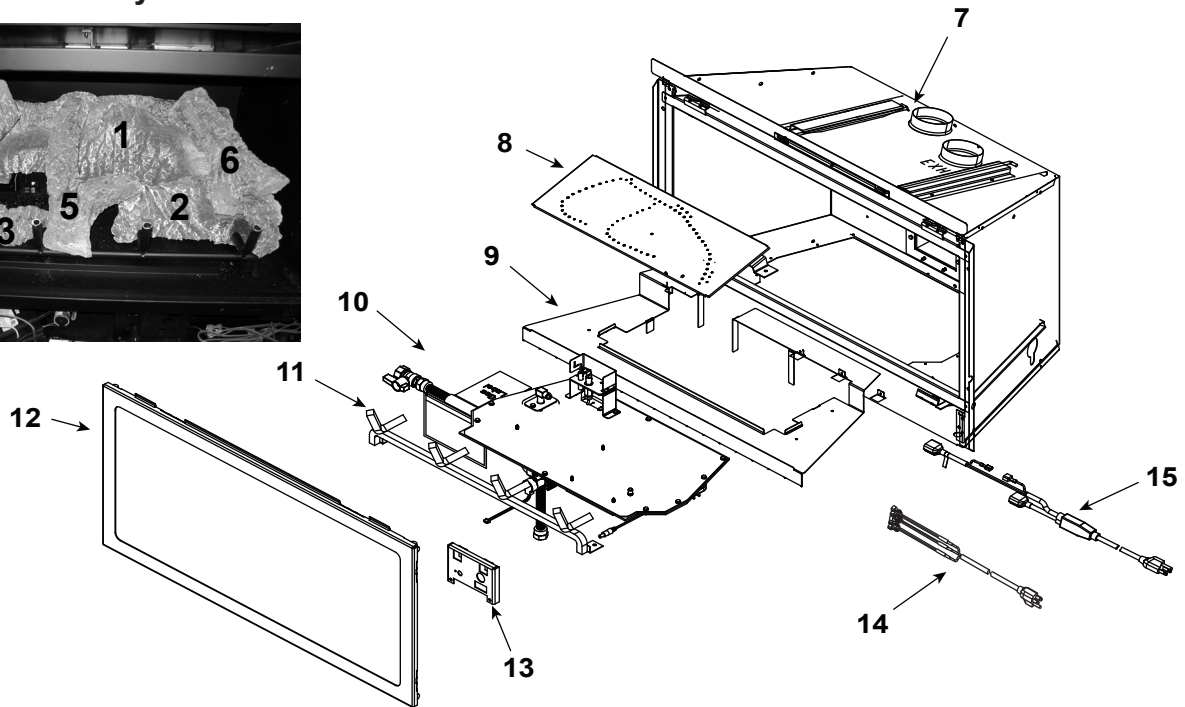
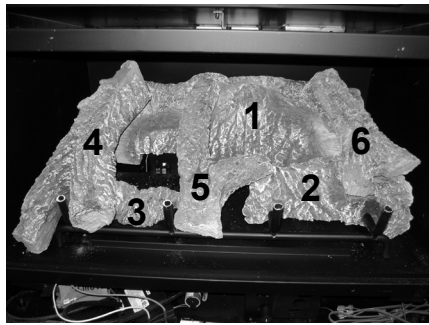


**Log Set Assembly**



IMPORTANT: THIS IS DATED INFORMATION. Parts must be ordered from a dealer or distributor. **Hearth and Home Technologies does not sell directly to consumers.** Provide model number and serial number when requesting service parts from your dealer or distributor.

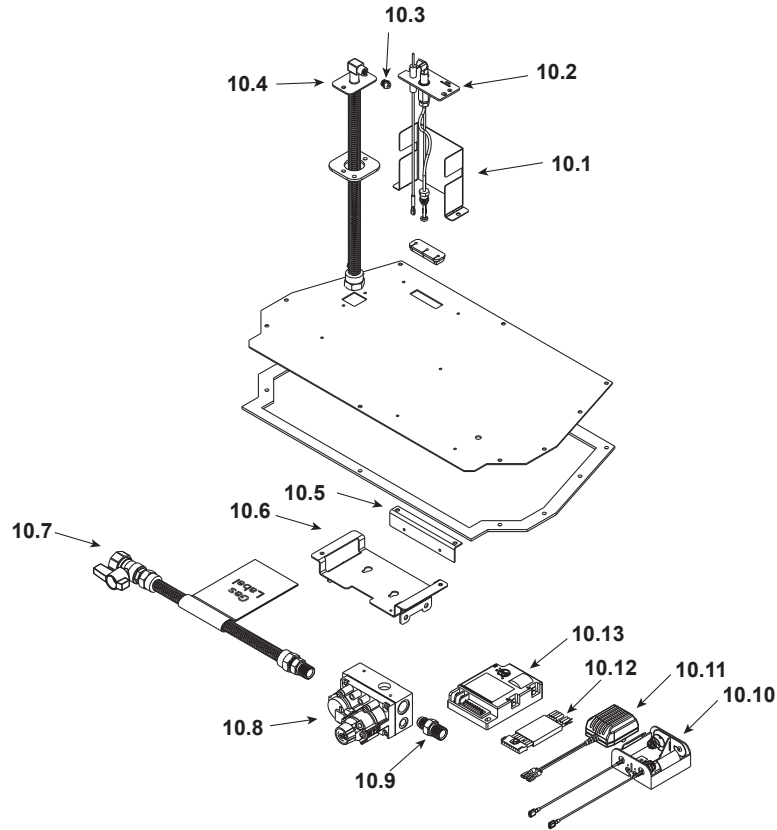


**Stocked at Depot**

ITEM	DESCRIPTION	COMMENTS	PART NUMBER	
	Log Assembly		LOGS-NDI30	Y
1	Log 1	<b>No longer available, Must order complete assembly</b>	SRV2226-701	
2	Log 2		SRV2226-702	
3	Log 3		SRV2226-706	
4	Log 4		SRV2226-703	
5	Log 5		SRV2226-705	
6	Log 6		SRV2206-704	
7	Termination Plate Assembly	No Longer Available	2206-012	
	Flex Pipe Handle	No Longer Available	438-351	
	Gasket	No Longer Available	2206-401	
8	Burner Assembly	No Longer Available	SRV2226-007-BK	
9	Base Pan	No Longer Available	SRV2206-106-BK	
10	Valve Assembly		Refer to valve page	
11	Grate Assembly	No Longer Available	SRV2226-016-BK	
12	Glass Door Assembly	No Longer Available	GLA-2206	
13	Control Panel	No Longer Available	SRV2205-129-BK	
14	Cord Assembly		2226-017	Y
15	Wire Assembly		2206-068	Y

Additional service part numbers appear on following page.

**#10 Valve Assembly**



IMPORTANT: THIS IS DATED INFORMATION. Parts must be ordered from a dealer or distributor. **Hearth and Home Technologies does not sell directly to consumers.** Provide model number and serial number when requesting service parts from your dealer or distributor.



**Stocked at Depot**

ITEM	DESCRIPTION	COMMENTS	PART NUMBER	
10.1	*Pilot Bracket	Call Tech Service with Serial number		
10.2	*Pilot Assembly NG		Call Tech Service with Serial number	
	*Pilot Assembly LP			
10.3	Orifice NG (#35C)		SRV582-835	Y
	Orifice LP (#51C)		SRV582-851	Y
10.4	Flexible Gas Connector		530-302A	Y
10.5	Control Panel Bracket	<b>No Longer Available</b>	SRV2205-128	
10.6	Valve Bracket		SRV2205-146	
10.7	Flex Ball Valve Assembly		SRV302-320	Y
10.8	Valve NG		750-500	Y
	Valve LP		750-501	Y
10.9	Brass Connector	Pkg of 5	303-315/5	Y
10.10	Battery Pack		SRV593-594	Y
10.11	Power Supply		SRV593-593	Y
10.12	Wire Harness		SRV593-590	Y
10.13	Module		SRV593-592	Y

\*Call Tech Service with serial number for correct conversion and/or possible upgrade pilot kit

Additional service part numbers appear on following page.

