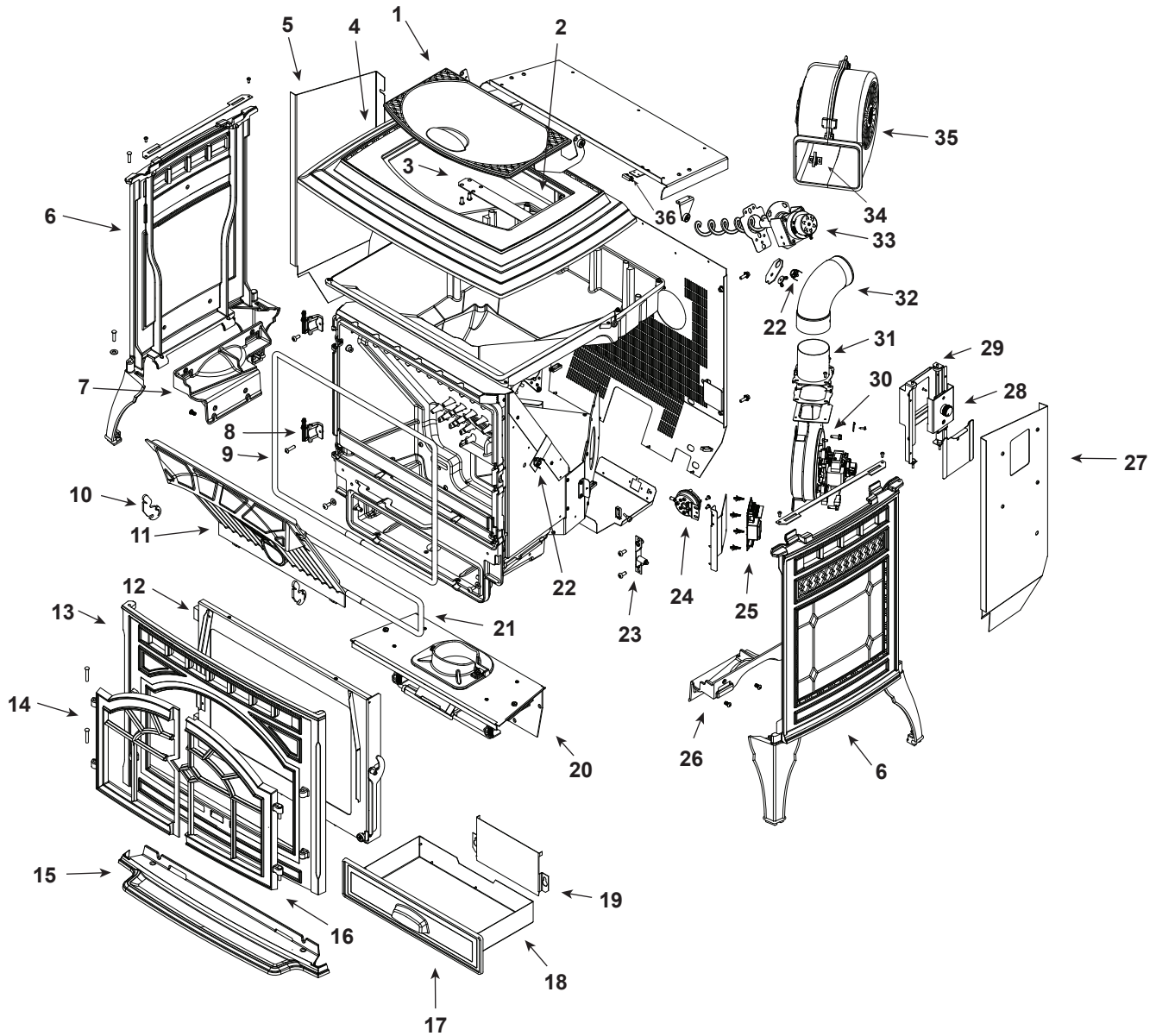


MTV-E2-CSB-C, MTV-E2-MBK-C, MTV-E2-PBK-C, MTV-E2-PDB-C, MTV-E2-PFT-C, MTV-E2-PMH-C



Part number list on following page.

Beginning Manufacturing Date: July 2017

Ending Manufacturing Date: Aug 2018

IMPORTANT: THIS IS DATED INFORMATION. Parts must be ordered from a dealer or distributor. **Hearth and Home Technologies does not sell directly to consumers.** Provide model number and serial number when requesting service parts from your dealer or distributor.

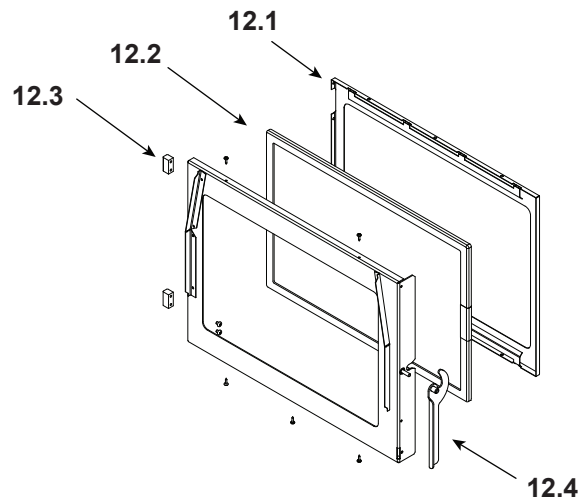


**Stocked
at Depot**

ITEM	DESCRIPTION	COMMENTS	PART NUMBER	
1	Hopper Lid	Matte Black	7034-157MBK	
		Porcelain Black	7034-157PBK	
		Porcelain Dark Blue	7034-157PDB	
		Porcelain Frost	7034-157PFT	
		Porcelain Mahogany	7034-157PMH	
		Sienna Bronze	7034-157CSB	
	Gasket, Hopper Lid	10 FT	7000-320/10	
2	Hinge Pin		SRV7034-159	
3	Hinge Retainer		SRV7034-163	
4	Top	Matte Black	7034-155MBK	
		Porcelain Black	7034-155PBK	
		Porcelain Dark Blue	7034-155PDB	
		Porcelain Frost	7034-155PFT	
		Porcelain Mahogany	7034-155PMH	
		Sienna Bronze	7034-155CSB	
5	Shroud Left		SRV7080-123	
6	Side (Interchangeable)	Matte Black	7005-107MBK	
		Porcelain Black	7005-107PBK	
		Porcelain Dark Blue	7005-107PDB	
		Porcelain Frost	7005-107PFT	
		Porcelain Mahogany	7005-107PMH	
		Sienna Bronze	7005-107CSB	
7	Side Mount Left		7034-128	
8	Hinge Male		SRV7034-138	
9	Gasket, Door Rope		SRV7034-177	Y
10	Latch, Baffle		SRV7034-149	
11	Baffle		SRV7034-263	Y

Additional service part numbers appear on following page.

#12 Door Assembly



IMPORTANT: THIS IS DATED INFORMATION. Parts must be ordered from a dealer or distributor. **Hearth and Home Technologies does not sell directly to consumers.** Provide model number and serial number when requesting service parts from your dealer or distributor.



**Stocked
at Depot**

ITEM	DESCRIPTION	COMMENTS	PART NUMBER	
12	Door Assembly		SRV7080-015	
12.1	Glass Retainer		SRV7034-136	Y
12.2	Glass Assembly w/Gasket		SRV7034-007	Y
	Gasket, Channel 1/8 x 1-1/4 x 10		7000-377/10	
12.3	Hinge Female		SRV450-2910	
12.4	Door Latch Assembly		SRV413-5200	
13	Front, Face	Matte Black	7005-108MBK	
		Porcelain Black	7005-108PBK	
		Porcelain Dark Blue	7005-108PDB	
		Porcelain Frost	7005-108PFT	
		Porcelain Mahogany	7005-108PMH	
		Sienna Bronze	7005-108CSB	
	Rivet, Button Head	Pkg of 25	25272/25	Y
14	Door Left	Matte Black	7005-110MBK	
		Porcelain Black	7005-110PBK	
		Porcelain Dark Blue	7005-110PDB	
		Porcelain Frost	7005-110PFT	
		Porcelain Mahogany	7005-110PMH	
		Sienna Bronze	7005-110CSB	
15	Ash Lip	Matte Black	7080-140MBK	
		Porcelain Black	7080-140PBK	
		Porcelain Dark Blue	7080-140PDB	
		Porcelain Frost	7080-140PFT	
		Porcelain Mahogany	7080-140PMH	
		Sienna Bronze	7080-140CSB	

Additional service part numbers appear on following page.

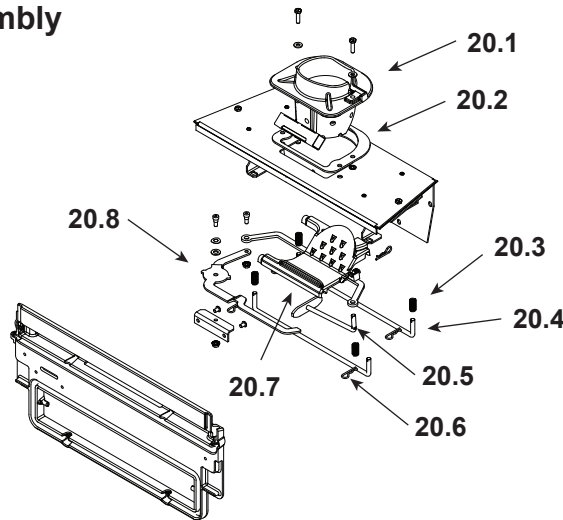
IMPORTANT: THIS IS DATED INFORMATION. Parts must be ordered from a dealer or distributor. **Hearth and Home Technologies does not sell directly to consumers.** Provide model number and serial number when requesting service parts from your dealer or distributor.



**Stocked
at Depot**

ITEM	DESCRIPTION	COMMENTS	PART NUMBER	
16	Door Right	Matte Black	7005-109MBK	
		Porcelain Black	7005-109PBK	
		Porcelain Dark Blue	7005-109PDB	
		Porcelain Frost	7005-109PFT	
		Porcelain Mahogany	7005-109PMH	
		Sienna Bronze	7005-109CSB	
17	Ash Pan Door		SRV7034-133	
18	Ash Pan Assembly		SRV7034-069	
	Twin Ball Catch		SRV7000-532	Y
19	Intake Shield		SRV7034-224	Y

#20 Firepot Riser Assembly



20	Firepot Riser Assembly (Does Not Include Floor Lever Assembly)		SRV7080-082	
20.1	Firepot Assembly		SRV7080-083	Y
20.2	Gasket, Firepot		SRV7034-190	Y
20.3	Spring	Pkg of 4	7000-513/4	Y
20.4	Rail, Auto-clean		SRV7034-152	Y
20.5	Plow Weldment, Auto-clean		SRV7034-024	Y
20.6	Hitch Pin Clip, 3/32	Pkg of 10	7000-374/10	Y
20.7	Firepot Bottom		SRV7034-153	Y
20.8	Firepot Floor Lever Assembly (Not Included w/Firepot Riser Assembly)		SRV7080-018	
21	Gasket, Rope, Ash Door		SRV7034-178	Y
22	Snap Disc, L250F Manual Reset (#3)		SRV230-1290	Y
23	Latch Bracket Assembly		SRV7034-049	Y

Additional service part numbers appear on following page.

Beginning Manufacturing Date: July 2017
Ending Manufacturing Date: Aug 2018

IMPORTANT: THIS IS DATED INFORMATION. Parts must be ordered from a dealer or distributor. **Hearth and Home Technologies does not sell directly to consumers.** Provide model number and serial number when requesting service parts from your dealer or distributor.



**Stocked
at Depot**

ITEM	DESCRIPTION	COMMENTS	PART NUMBER	
24	Vacuum Switch		SRV7000-531	Y
	Vacuum Hose	3 Ft cut to fit	SRV7000-373	Y
25	Control Board		SRV7080-053	Y
	Wire Harness		SRV7080-129	Y
	Fuse 5A, Slow IEC	Pkg of 10	7000-490/10	Y
	Wire Harness, Hall Effect		SRV7080-130	Y
26	Side Mount, Right		7034-126	
27	Shroud Right	Pre 7/2015	SRV7080-122	Y
		Post 7/2015	SRV7080-153	Y
28	Dial Control		SRV7083-036	Y
	Wire Harness, Dial Control		SRV7000-667	Y
29	Dial Control Panel Door Assembly		SRV7080-037	
30	Combustion Blower		SRV7080-106	Y
	Combustion Blower Gasket, Between Housing and Stove		SRV7080-117	Y
	Combustion Blower Motor Gasket, Between Motor and Housing		SRV7080-107	Y
31	Flue Collar Assembly		SRV7080-013	
32	Exhaust Transition Assembly	No longer available	SRV7034-139	
	Gasket, Exhaust		SRV7034-109	
33	Feed Assembly		SRV7080-010	Y
	Feed Spring Assembly (Only)		SRV7001-046	Y
	Gasket, Feed Motor		SRV7034-144	
	Feed Motor		812-4421	Y
34	Elbow Catch		7000-393	
35	Convection Blower		SRV7080-105	Y
36	Magnetic Switch		SRV7000-375	Y
	Thermostat, Programmable		PROG-STAT	

Additional service part numbers appear on following page.

