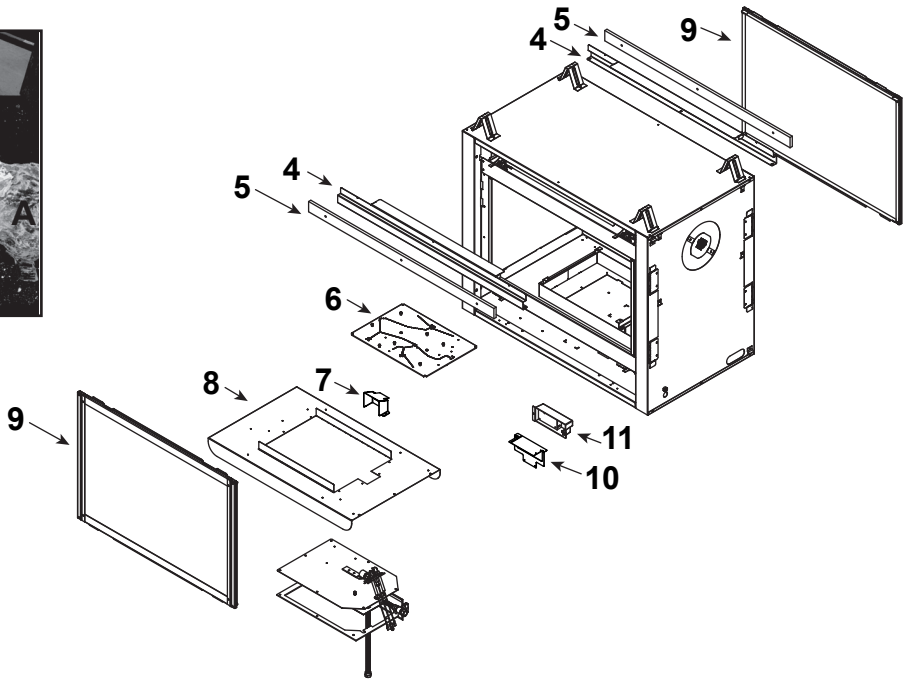
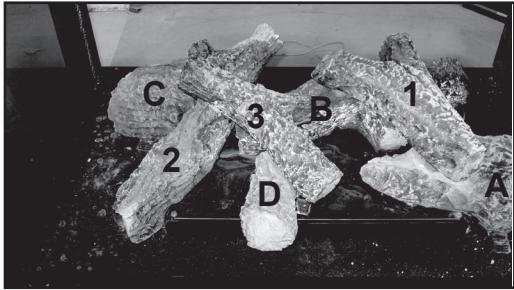


Log Set Assembly

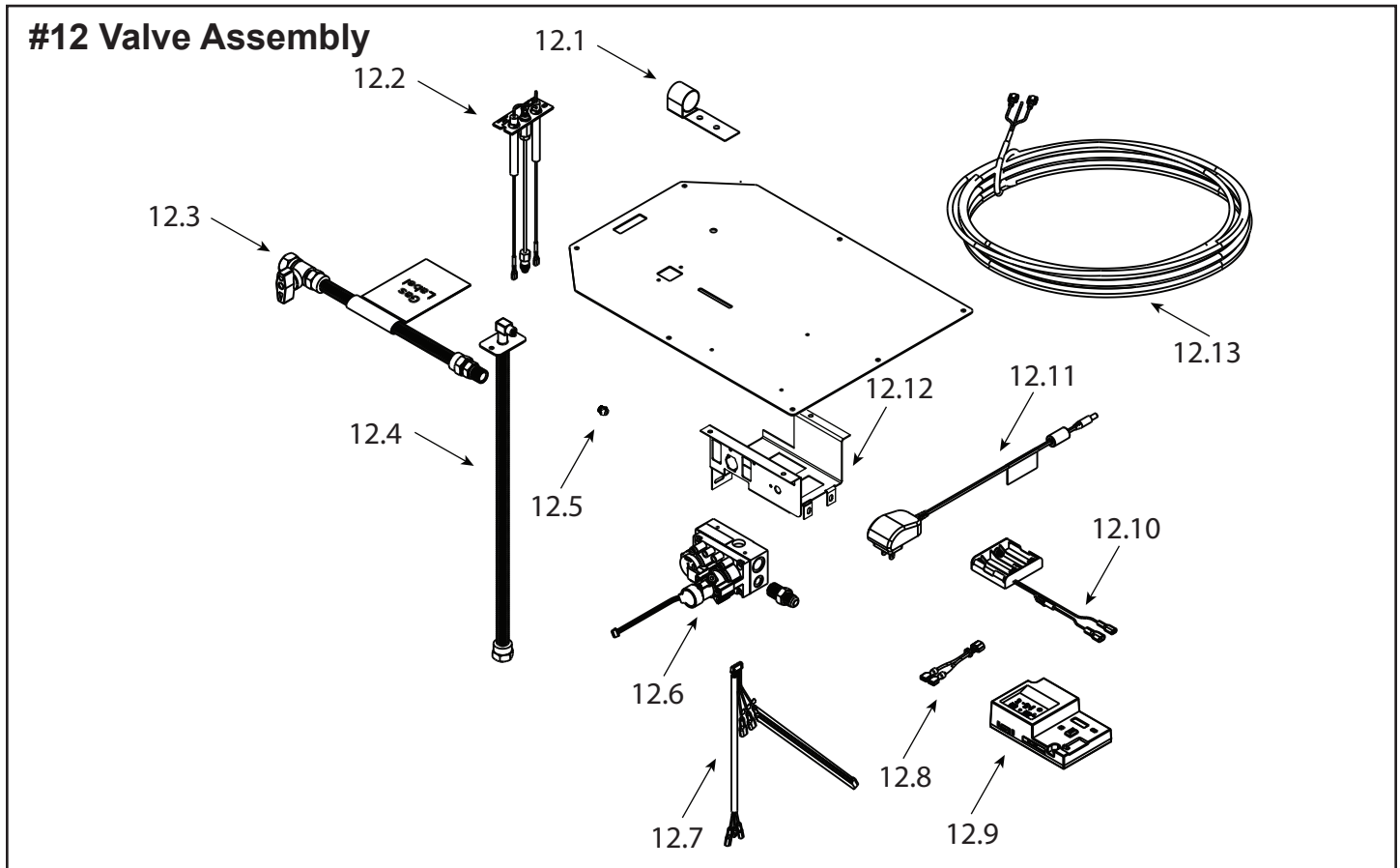


IMPORTANT: THIS IS DATED INFORMATION. Parts must be ordered from a dealer or distributor. **Hearth and Home Technologies does not sell directly to consumers.** Provide model number and serial number when requesting service parts from your dealer or distributor.



Stocked at Depot

| ITEM | DESCRIPTION | COMMENTS | PART NUMBER | |
|------|---|-----------|--------------|---|
| | Log Set Assembly | | LOGS-2129 | Y |
| A | Log A | | SRV2129-701 | |
| B | Log B | | SRV2129-703 | |
| C | Log C | | SRV2129-702 | |
| D | Log D | | SRV2129-706 | |
| 1 | Log 1 | | SRV2129-704 | |
| 2 | Log 2 | | SRV2129-705 | |
| 3 | Log 3 | | SRV2129-707 | |
| 4 | Sheetrock Ledge | Qty 2 req | 2128-118 | |
| 5 | Non-Comb | Qty 2 req | 2130-196 | |
| 6 | Burner NG, LP | | 2128-007 | Y |
| 7 | Pilot Shield | | 2128-124 | |
| 8 | Base Pan | | 2132-115 | |
| 9 | Glass Door Assembly | Qty 2 req | GLA-6TROC | Y |
| 10 | Junction Box Bracket | | 2128-128 | |
| 11 | Junction Box | | SRV4021-013 | Y |
| | Refractory Panel | | 2128-117 | |
| | Refractory Air Passage Side | | 2128-116 | |
| | Surround Overlay (contains overlay for top, bottom and sides) | | SRV2128-FACE | |



IMPORTANT: THIS IS DATED INFORMATION. Parts must be ordered from a dealer or distributor. **Hearth and Home Technologies does not sell directly to consumers.** Provide model number and serial number when requesting service parts from your dealer or distributor.



Stocked at Depot

| ITEM | DESCRIPTION | COMMENTS | PART NUMBER | |
|-------|-------------------------------------|----------------------------------|-------------|---|
| 12.1 | Shutter Bracket Assembly | | 2118-121 | Y |
| 12.2 | Pilot Assembly NG | | 2478-012 | Y |
| | Pilot Assembly Propane | Convert 2478-012 with SRV593-527 | | |
| 12.3 | Flex Ball Valve Assembly | | SRV302-320 | Y |
| 12.4 | Flexible Gas Connector | | 530-302A | Y |
| 12.5 | Orifice NG (#32C) | | SRV582-832 | Y |
| | Orifice Propane (#50C) | | 582-850 | Y |
| 12.6 | Valve NG | | SRV2166-302 | Y |
| | Valve Propane | | 2166-303 | Y |
| 12.7 | Harness, IFT 6 Pin Wiring | | SRV2326-132 | Y |
| 12.8 | Jumper Wire | | SRV2187-198 | Y |
| 12.9 | Module, IFT Control | | SRV2326-130 | Y |
| 12.10 | Battery Holder 4AA, IFT | | SRV2326-134 | Y |
| 12.11 | Transformer, 6 Volt Wall | | SRV2326-131 | Y |
| 12.12 | Valve, Bracket | | 2118-104 | |
| 12.13 | Thermostat Wire Assembly, Male/Male | | SRV2118-170 | Y |

Additional service part numbers appear on following page.

IMPORTANT: THIS IS DATED INFORMATION. Parts must be ordered from a dealer or distributor. **Hearth and Home Technologies does not sell directly to consumers.** Provide model number and serial number when requesting service parts from your dealer or distributor.



**Stocked
at Depot**

| ITEM | DESCRIPTION | COMMENTS | PART NUMBER | |
|------|---|-----------|-------------------|---|
| | Baffle (Exhaust Restrictor) | | 385-105 | |
| | Multi-side, Front | Black | MSFR-36-BK | |
| | Flue Restrictor | | 385-128 | |
| | Gasket Assembly | | 2128-081 | |
| | Contains Vent, Seal Cap, Burner Neck, Shutter Bracket and Valve Plate Gaskets | | | |
| | Glass Latch Assembly | Qty 2 req | 2382-400 | Y |
| | Lava Rock | | 2005-790 | |
| | Mineral Wool | | 050-721 | |
| | Touch Up Paint | | TUP-GBK-12 | |
| | | | | |
| | | | | |
| | | | | |
| | | | | |
| | | | | |
| | | | | |
| | | | | |
| | | | | |
| | | | | |
| | | | | |
| | | | | |
| | | | | |
| | | | | |
| | | | | |
| | | | | |
| | | | | |
| | | | | |
| | | | | |
| | | | | |
| | | | | |
| | | | | |
| | | | | |
| | | | | |
| | | | | |
| | | | | |
| | | | | |
| | | | | |
| | | | | |
| | | | | |
| | | | | |
| | Conversion Kit NG | | NGK-MS36-IFT | Y |
| | Conversion Kit Propane | | LPK-MS36-IFT | Y |
| | Pilot Orifice NG | | SRV593-528 | Y |
| | Pilot Orifice Propane | | SRV593-527 | Y |
| | Regulator NG | | NGK-DXV-50 | Y |
| | Regulator Propane | | SRVLPK-DXV-50 | Y |