

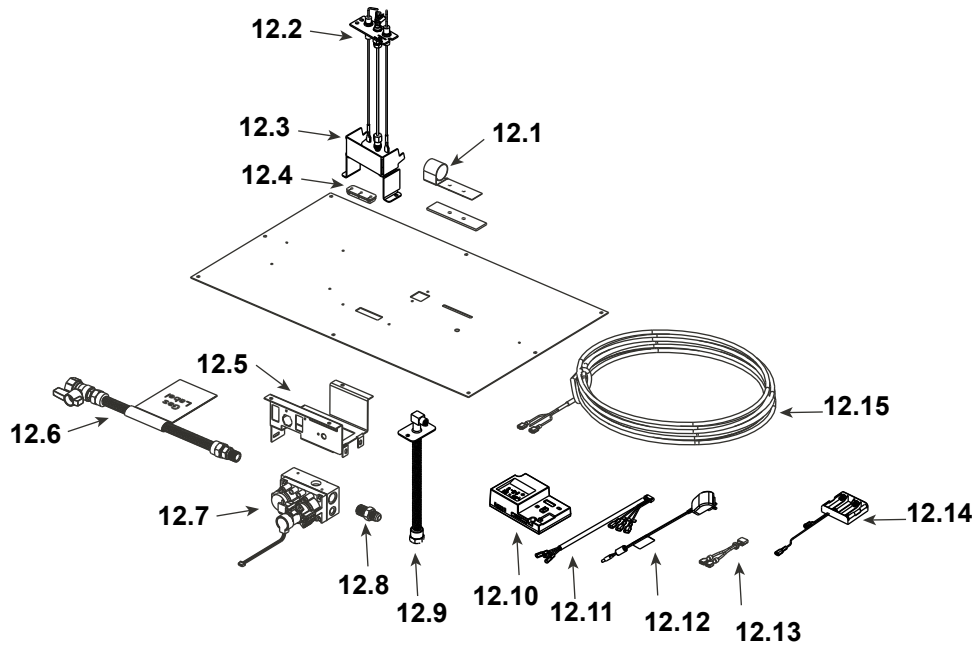
IMPORTANT: THIS IS DATED INFORMATION. Parts must be ordered from a dealer or distributor. **Hearth and Home Technologies does not sell directly to consumers.** Provide model number and serial number when requesting service parts from your dealer or distributor.



Stocked at Depot

| ITEM | DESCRIPTION | COMMENTS | PART NUMBER | |
|------|-------------------------|----------------------------|-------------|---|
| 1 | Non-Combustible Board | | 2170-136 | |
| 2 | Refractory Bracket | Qty 2 req | 2241-115 | |
| 3 | Rock Fixture Assembly | | 2241-040 | Y |
| 4 | Base Pan Assembly | | 2242-015 | |
| 4.1 | Base Pan Back | | 2242-114 | |
| 4.2 | Base Pan Front | | 2242-101 | |
| 4.3 | Pilot Hood | | 2241-117 | |
| 4.4 | Pilot Shield | Stainless | 2241-116 | |
| 5 | Burner Assembly | | SRV2510-006 | Y |
| 6 | Glass Refractory, Back | | 2510-700 | |
| 7 | Glass Refractory, Sides | Qty 2 req | 2510-701 | |
| 8 | Glass Retainer Clips | Pkg of 25 | 060-235-25 | Y |
| 9 | Surround Assembly | No longer available | 2170-019 | |
| 10 | Glass Assembly | | GLA2507-018 | Y |
| 11 | Junction box | | SRV4021-013 | Y |

#12 Valve Assembly



IMPORTANT: THIS IS DATED INFORMATION. Parts must be ordered from a dealer or distributor. **Hearth and Home Technologies does not sell directly to consumers.** Provide model number and serial number when requesting service parts from your dealer or distributor.



Stocked at Depot

| ITEM | DESCRIPTION | COMMENTS | PART NUMBER | |
|-------|---------------------------|----------|----------------|---|
| 12.1 | Shutter Bracket Assembly | | 2118-121 | Y |
| 12.2 | Pilot Assembly, NG | | SRV2090-012 | Y |
| 12.3 | Pilot Bracket | | SRV2241-109-BK | |
| 12.4 | 3-Hole Grommet | | SRV2118-420 | |
| 12.5 | Valve Bracket | | 2118-104 | |
| 12.6 | Flex Ball Valve Assembly | | SRV302-320 | Y |
| 12.7 | Valve, NG | | SRV2166-302 | Y |
| 12.8 | Male Connector | Pkg of 5 | 303-315/5 | Y |
| 12.9 | Bulkhead w/FlexTube | | SRV7000-156 | Y |
| 12.10 | Module, IFT Control | | SRV2326-130 | Y |
| 12.11 | Harness, IFT 6 Pin Wiring | | SRV2326-132 | Y |
| 12.12 | Switched DC Regulator | | SRV2326-131 | Y |
| 12.13 | Jumper Wire | | SRV2187-198 | Y |
| 12.14 | Battery Pack** | | SRV2326-134 | Y |
| 12.15 | Thermostat Wire Assembly | | SRV2118-170 | Y |
| | Orifice, NG (#33C) | | 582-833 | Y |

**Fuse for battery pack can be sourced locally, not a warranty item. Specs are 250v, 3A fuse, 3/4" long

Additional service part numbers on following page.



Service Parts

8000CMOD-IFT

No one builds a better fire

Beginning Manufacturing Date: Mar 2018
Ending Manufacturing Date: May 2023

IMPORTANT: THIS IS DATED INFORMATION. Parts must be ordered from a dealer or distributor. **Hearth and Home Technologies does not sell directly to consumers.** Provide model number and serial number when requesting service parts from your dealer or distributor.



**Stocked
at Depot**

| ITEM | DESCRIPTION | COMMENTS | PART NUMBER | |
|------------------------|--|---------------|-----------------|---|
| | Flue Restrictor | Qty 2 req | 385-128 | |
| | Firescreen Front | Black | FOL-42-BK | |
| | Glass Latch Assembly | Qty 4 req | 2382-400 | Y |
| | Gasket Assembly Includes Vent, Seal Cap, Burner Neck, Shutter Bracket, Manifold and Valve Plate gaskets | | 2166-081 | |
| | Media, Standard (5 LB bag) Black | Qty 3 req | 2188-850 | |
| | Media, (Optional 7 LB bag) Clear | Qty 2 req | 4065-111 | |
| | Media (Optional 14 LB bag) | Amber | MEDIA-AMBER-14 | |
| | | Cobalt (Blue) | MEDIA-COBALT-14 | |
| | Touch Up Paint | | TUP-GBK-12 | |
| Conversion Kits | | | | |
| | *This unit is not conversion compatible | | | |
| | Pilot Orifice, NG | | 593-528 | Y |
| | Regulator, NG | | NGK-DXV-50 | Y |