



ANYA LANE CONTEMPORARY HOME



FEATURING THE TWILIGHT II
INDOOR/OUTDOOR GAS FIREPLACE

HEAT & GLO®

No one builds a better fire



The Twilight II by Heat & Glo helps create a seamless flow between indoor and outdoor living spaces.

PROJECT TYPE

New Construction, Residence

LOCATION

View Royal, British Columbia

DESIGN BUILDER

Chris Walker, Christopher Developments

INTERIOR DESIGNER

Zebra Interiors

LANDSCAPE DESIGNER

Duane Ensing

PHOTOGRAPHER

Vince Glassen

SQUARE FOOTAGE

3,400

FLOORS

2

BEDROOMS

3

BATHROOMS

3

MODEL

Twilight II Gas Fireplace

THE PROJECT

This stunning two-level contemporary home sits on a serene tidal estuary in Esquimalt Harbor in scenic View Royal, British Columbia. Chris Walker, of Christopher Walker Developments sought to create a tranquil structure that was a fusion of Asian inspired architecture and contemporary design from the West Coast.

Incorporating some of the latest in environmentally conscious building practices, the home features sleek sophisticated styling combined with the warmth of finely crafted wood interior detailing, making the residence truly one of a kind.

With breathtaking views, the home's clean line architecture utilizes plenty of expansive windows and doorways to bring in natural light. Edge grain, Douglas fir veneer wood detailing works to achieve a distinctly "zen" ambiance throughout the home.

On the second floor, a stunning indoor/outdoor gas fireplace is accented by two custom five-foot wide grand sliding glass doors with off-center pivots, creating a seamless flow between the living room and the adjacent outdoor gathering area – effectively blending two spaces into one.

The eye-catching two-sided fireplace also needed to provide comfort and warmth to both spaces, especially with a four-season climate in View Royal. According to Chris Walker, the fireplace is more than aesthetic – it also serves to keep the space accessible during cooler seasons.



For a high-end, award-winning project like the Anya Lane home, the Twilight II is an ideal outdoor model. The second level outdoor space is both a prime gathering area and key design focal point for the back exterior of the home. Selecting a premium, high-design model such as the Twilight II or Twilight Modern gas fireplace ensures the overall character of the residence is reflected accordingly through the hearth application.

TWILIGHT SERIES

INDOOR/OUTDOOR GAS FIREPLACE

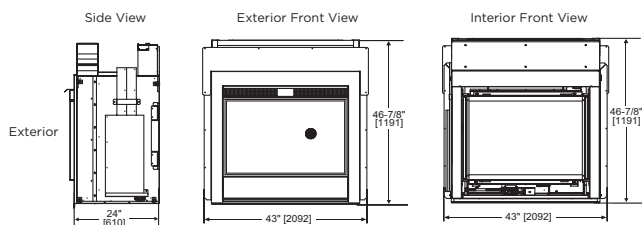
Add warmth and fireside views to two spaces—with one fireplace. The Twilight Series are the world’s first see-through indoor/outdoor gas fireplaces. Enjoy the fire yearlong, from either side. An advanced design and strong construction ensures an impressive and consistent performance.

- IntelliFire™ ignition system ensures safe operation and conserves energy
- No chimney or venting required, blending your fireplace effortlessly into your design

TWILIGHT II EXTERIOR/INTERIOR

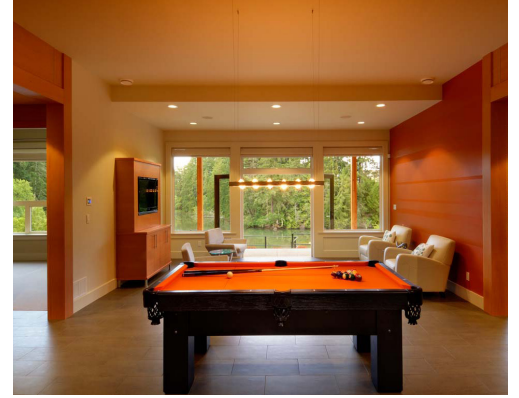


TWILIGHT MODERN EXTERIOR/INTERIOR



Model	Front Width		Back Width		Height		Depth	
	Unit	Framing	Unit	Framing	Unit	Framing	Unit	Framing
TWILIGHT-II / TWILIGHT MODERN	43"	44"	43"	44"	46-7/8"	47-5/8"	24"	23"
	[1091]	[1118]	[1091]	[1118]	[1191]	[1210]	[609]	[584]

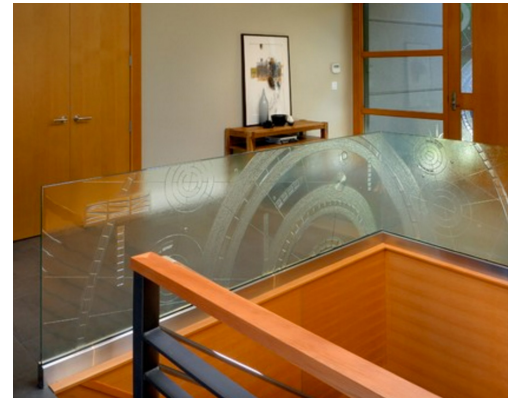
ROOMS TO RAVE ABOUT



Left: The contemporary style master bath transitions freely into the master bedroom.

Center and Right: A home theater and basement billiards room proves that this dream home has abounding amenities for hosting and entertaining.

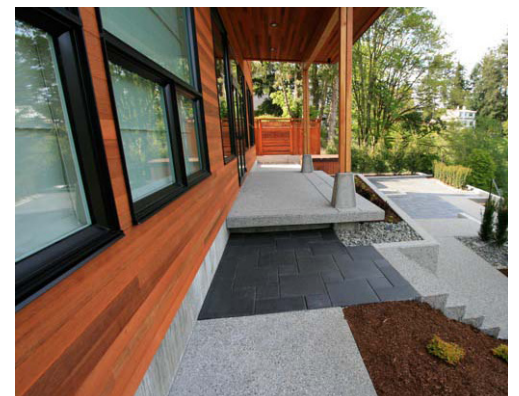
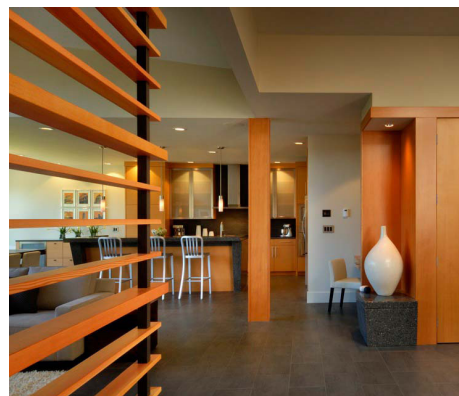
CUSTOM ELEMENTS



Left and Center: The kitchen center island, custom designed by Christopher Developments, is made from polished concrete with recycled glass.

Right: The patterned glass detailing accenting the stairway in the main foyer was crafted by Gabriel Blasted Glass.

ASIAN/WEST COAST FUSION



Left: A West Coast inspired eating space overlooks a breath taking view.

Center: The wooden room divider is a modern take on traditional Asian decor, custom designed and built on site.

Right: The exterior landscaping is reminiscent of a Japanese garden and was provided by Duane Ensing Landscape Design.



Above: The second level outdoor space is much more than a balcony or deck and by specifying an indoor/outdoor fireplace, the experience can be cozy and inviting for homeowners, even in the crunch of autumn.

1. Ensure the model you're specifying is approved for outdoor use.
2. Take into consideration gas and electrical connections for specific models.
3. For applications in coastal climates, use products made from stainless steel.
4. For indoor/outdoor models, make sure the unit is weather tested and window-rated.
5. For indoor/outdoor models, make sure to factor in the unit when calculating:
 - Structural tightness
 - Thermal transmission
 - Condensation Resistance Factor
 - STC/OITC performance
 - Security

DESIGNERS *on fire*

CHRIS WALKER, CHRISTOPHER WALKER DEVELOPMENTS
DESIGNER/BUILDER - ANYA LANE CONTEMPORARY HOME

For as long as I remember, I've always had a passion for design and construction," says Chris Walker, owner of Christopher Developments, a design-build in Victoria, British Columbia. Though trained as a commercial pilot and aircraft mechanic, he says he could not ignore the pull of his dream of becoming a builder. His career in aviation instilled in Chris a strict attention to detail, which has translated into his career as a designer-builder.

Since 1992, Christopher Developments has been designing and building meticulously crafted homes that are truly inspiring. From conceptualization to completion, Chris Walker and team ensure the highest standard of quality is maintained in every detail, no matter how small. From the blueprints they design, to the jackets they wear, they're not afraid to stamp their name on any aspect of the job with pride and integrity.

Christopher Developments has earned a reputation as one of the premier home builders on Vancouver Island, through trust and by achieving results that are truly impressive. "Envisioning unique design concepts and bringing them to life is extremely gratifying.



Creative is my favorite part of the process, and experiencing clients' reaction to the finished home is what really keeps me passionate about this business."

LEARN MORE ABOUT CHRISTOPHER DEVELOPMENTS:

- Company website:
ChristopherDevelopments.com
- Chris Walker's Houzz portfolio:
<http://www.houzz.com/pro/christopherdevelopments/christopher-developments>

MODERN OUTDOOR FIREPLACES

Specifying a fireplace is vital to the success of your project. According to the National Association of Homebuilders, a fireplace is the No. 1 decorative amenity requested by homeowners. Heat & Glo offers a full range of wood and gas fireplaces specifically manufactured for outdoor use. Your outdoor rooms matters. Whether it be for a custom residence or a commercial restaurant, hospitality, or lodging project, an outdoor fireplace will add impact and intrigue to your work.



*Palazzo gas fireplace
48" viewing area
Single-sided and see-through models*



*Twilight Modern gas fireplace
36" viewing area
Indoor/outdoor see-through model*



*Twilight II gas fireplace
36" viewing area
Indoor/outdoor see-through model*



*Dakota gas fireplace
42" viewing area
Single-sided model*



*Carolina gas fireplace
36" or 42" viewing area
Single-sided models*



*Castlewood wood fireplace
42" viewing area
Single-sided model*



*Montana wood fireplace
36" or 42" viewing area
Single-sided models*



*Villa gas fireplace
36" or 42" viewing area
Single-sided models*



*Villawood wood fireplace
36" or 42" viewing area
Single-sided models*