

LOG PLACEMENT INSTRUCTIONS

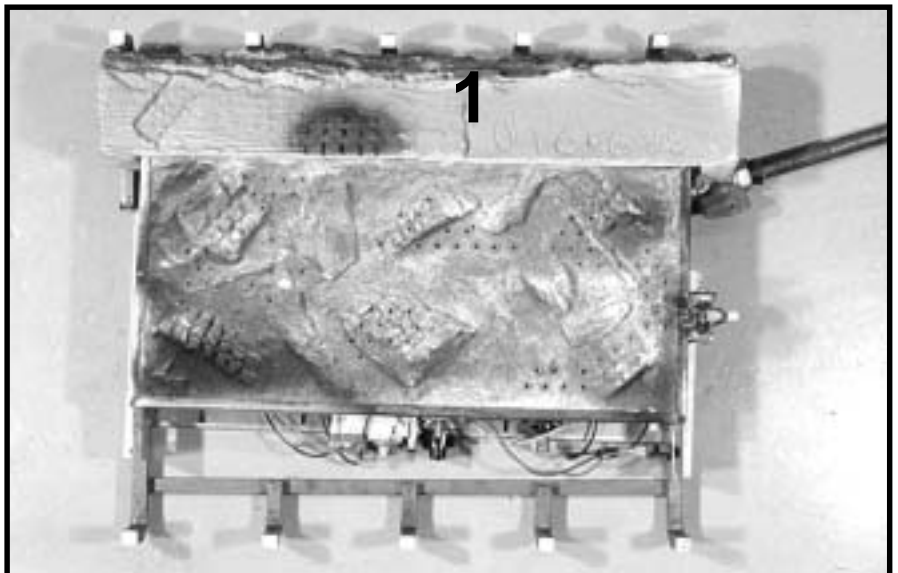
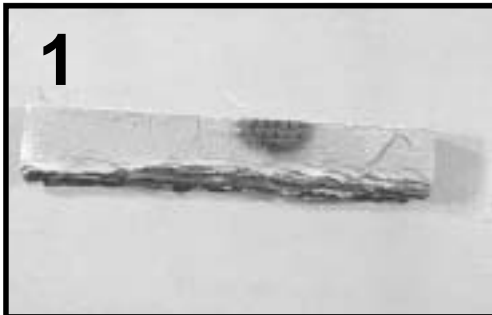
Model: ST-CFL-24NG/LP

NOTE: Following the instructions given below is very important (Flat spots will guide you throughout the process). Use the log numbers to identify your logs. Check to make sure the tabs on the side of the burner legs are bent outward. After setting the burner, set the identical log grates one on each side of the burner. Set them down and slide each one toward burner. Make sure right and left grate bars slide on outside of the burner legs. Push the grate toward burner. Place "dime size" pieces of mineral wool on top of burner, spaced dimes width apart. For log placement place each log standing at the correct side of burner. Please refer to the side desired prior to each log setting.



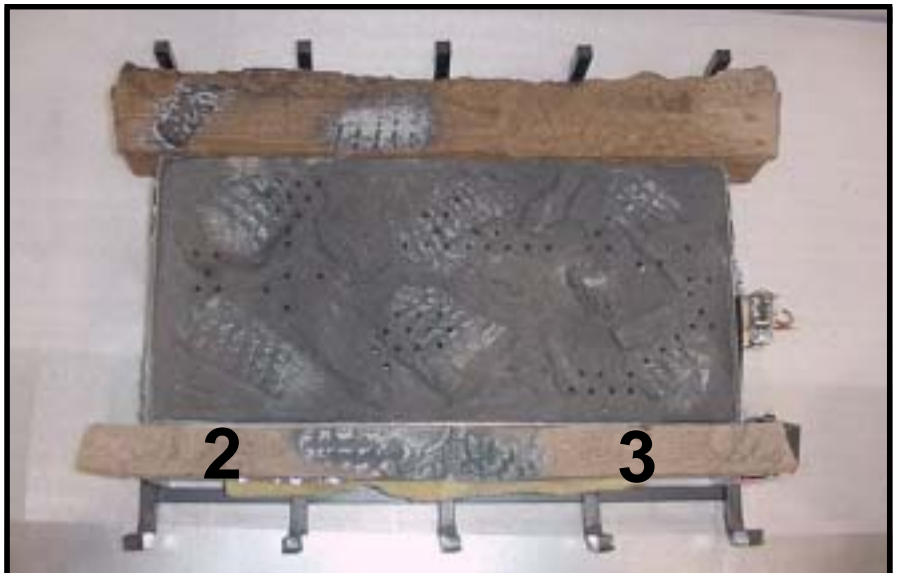
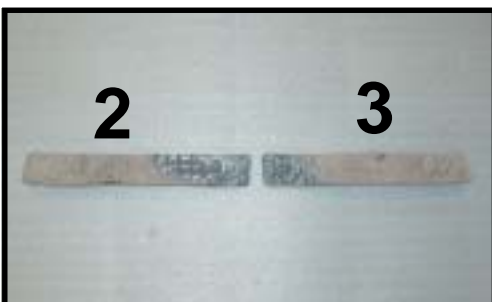
LOG #1: (SRV569-710)

Standing at the side opposite the valve, set log #1 in front of the burner, between the burner and the grate with the bark detail facing away from the burner. Push the grate along with the log to come in contact with the burner.



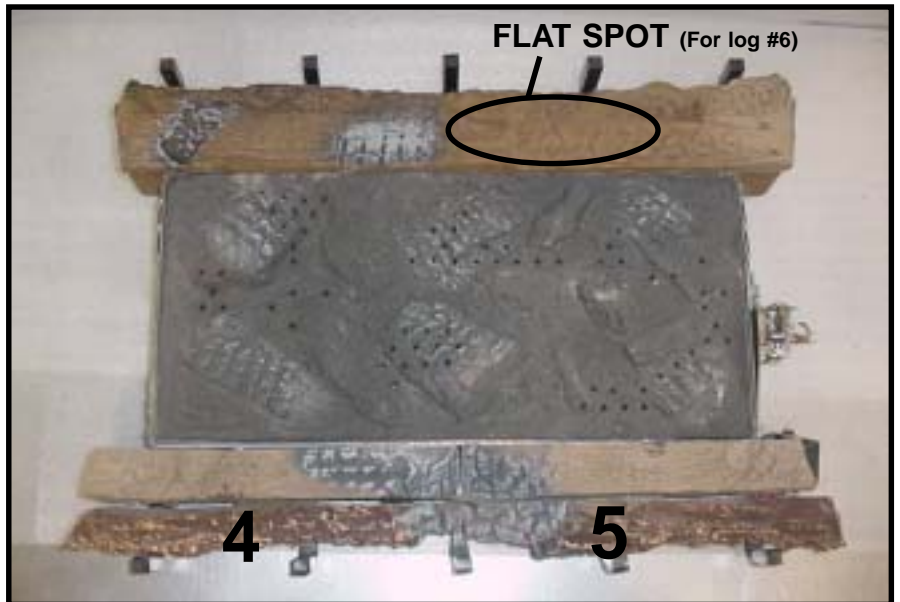
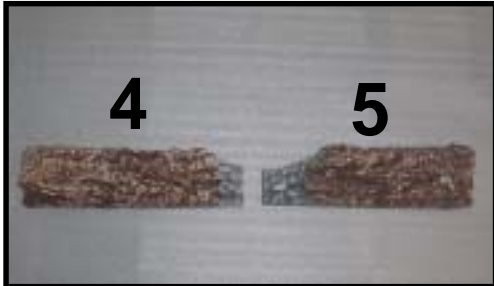
LOG #2 & #3: (SRV569-711)

Standing at the valve side, set log #2 and #3 on the other side of the burner. Rest the bottom two notches over extended material of the burner leg. Push the log until it comes in contact with the burner.



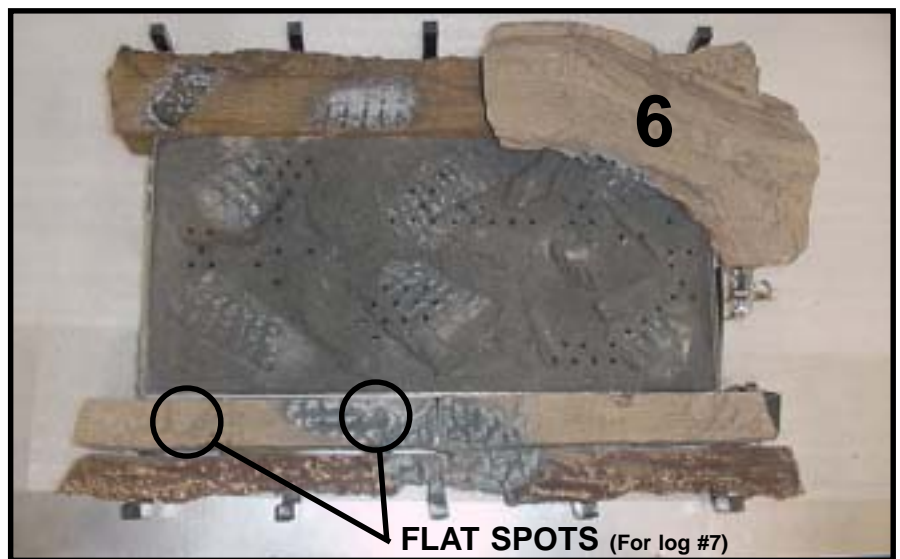
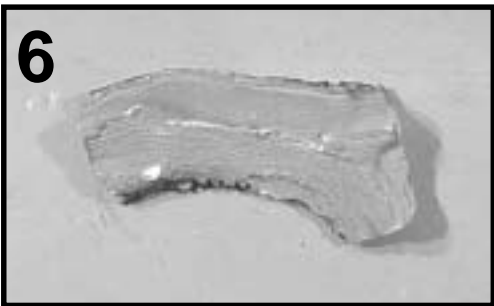
LOG #4 & #5: (SRV481-755)

Standing at the valve side, set logs #4 and 5 between the grate and logs #2 and 3 with the bark detail towards the outside. Logs #4 and 5 should be even with logs #2 and 3 from one side to the other. Slide gate to hold in place.



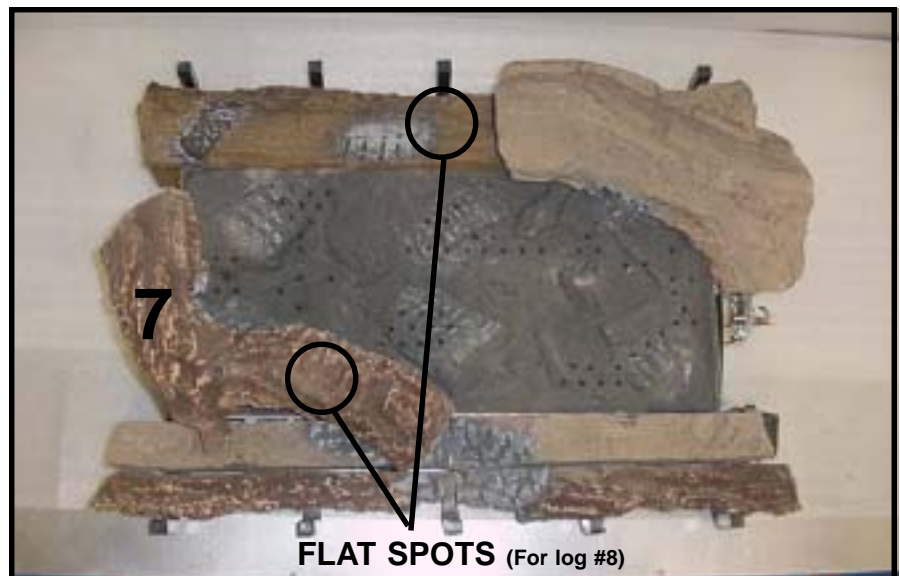
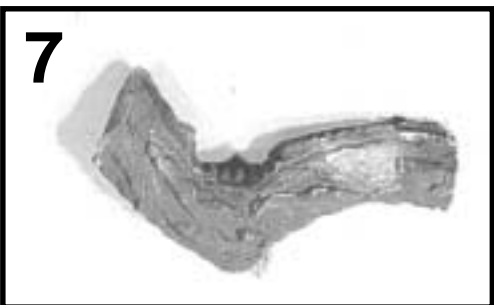
LOG #6: (SRV569-708)

Standing at the side opposite of the valve, set log #6 on the top of log # 1 and the burner to the left by following the flat spot pattern.



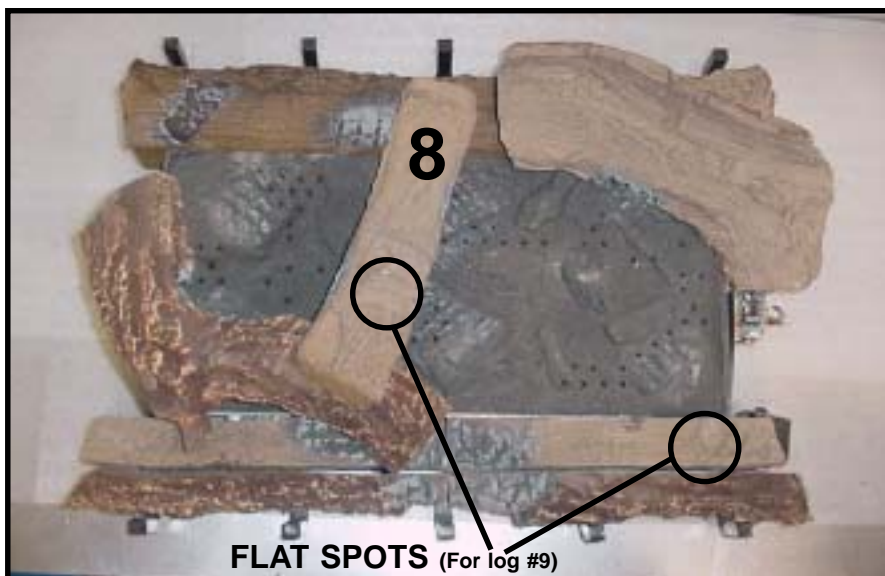
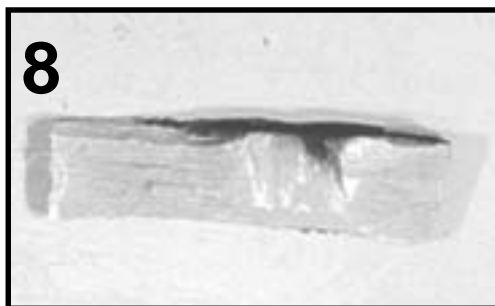
LOG #7: (SRV569-709)

Standing at the valve side, set log #7 on the top of log #2 and the burner to the left by following the flat spots pattern.



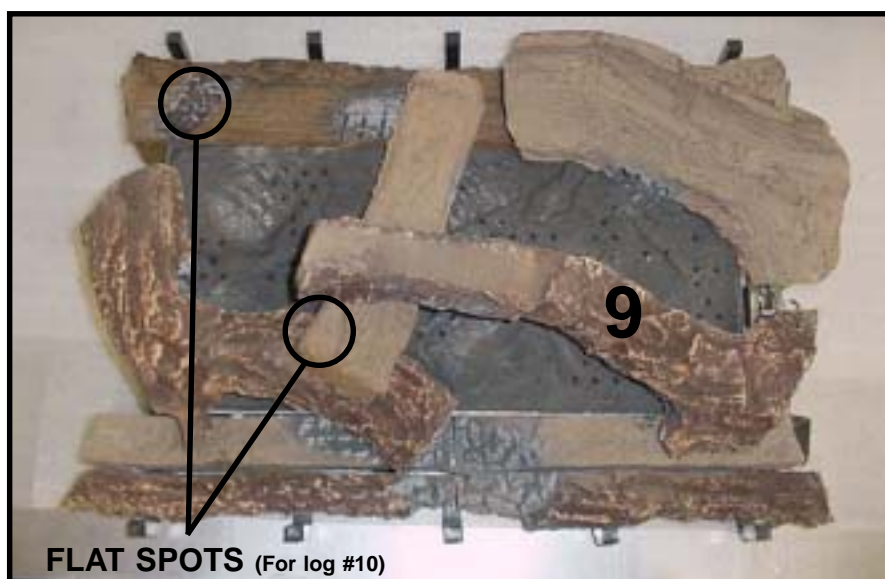
LOG #8: (SRV569-704)

Standing at the side opposite of the valve, set log #8 on th top of logs #1 and 7 (across the burner) by following the flat spot pattern. Note: The narrower end is on the top of log #1.



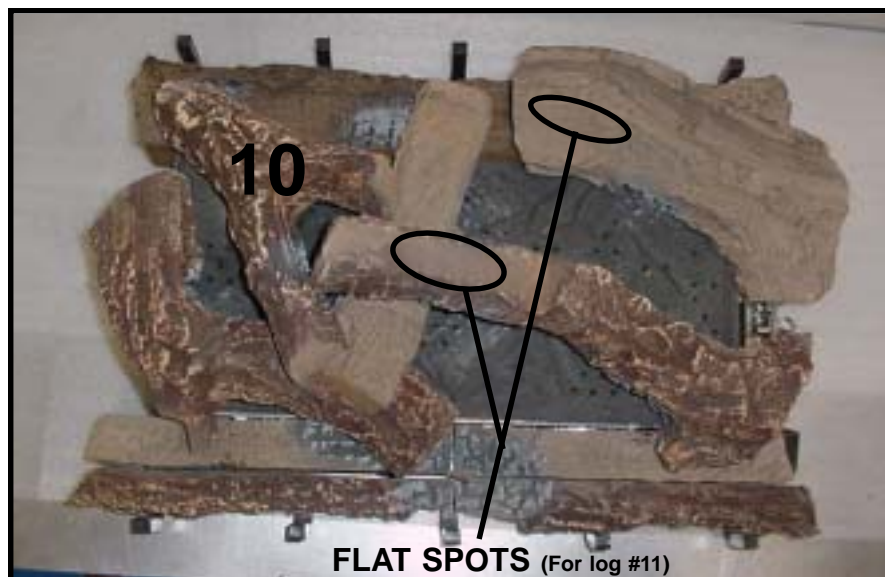
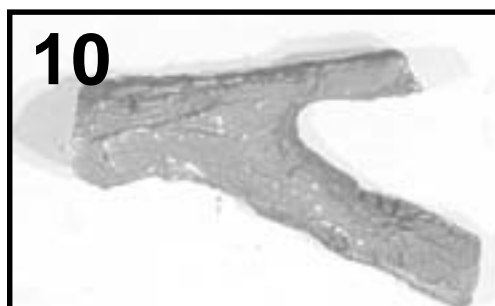
LOG #9: (SRV569-706)

Standing at the valve side, set log #9 on the top of log #3 to the right, using the flat spot on log #3. Lay the log on the top and across log #8, using the flat spot pattern.



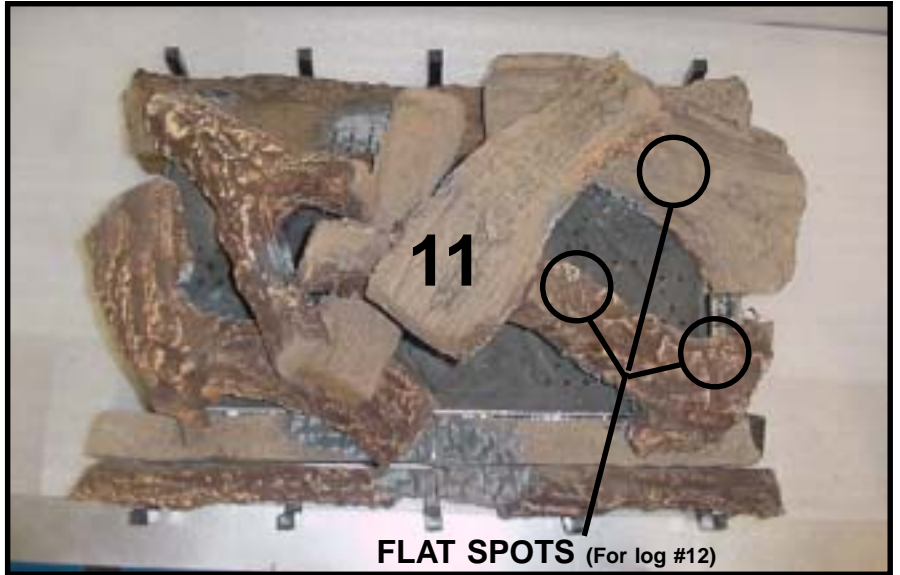
LOG # 10: (SRV569-707)

Standing at the side opposite of the valve, set log #10 on the top of log #1 to the right using the flat spot on log #1. Lay the log to rest on the top of log #8. When this log is placed it rests on the flat spot in the corner of log #8.



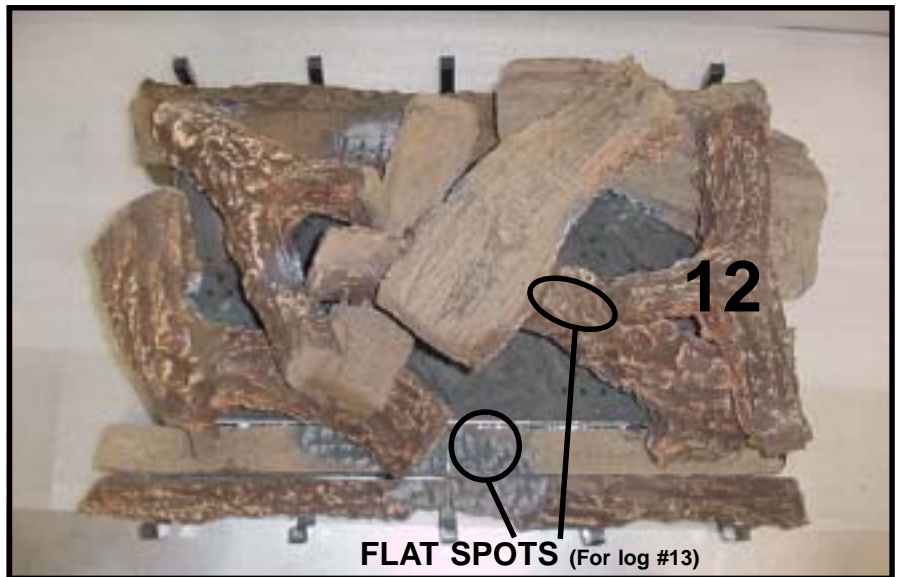
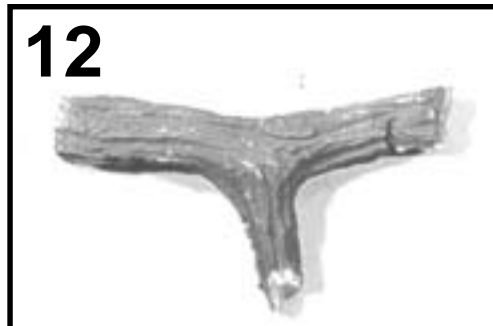
LOG #11: (SRV569-702)

Standing at the side opposite the valve, set log #11 on the top and across logs #9 and 6, using the flat spots on these logs.



LOG #12: (SRV569-703)

Standing at the side opposite of the valve, set log # 12 on top and across logs # 6 and 9, using the flat spots on these logs.



LOG #13: (SRV569-705)

Standing at the valve side, set log # 13 on the top of log # 3 using the flat spot on log # 3. Lay it onto the flat spot of log #9, this log curves to the right.

