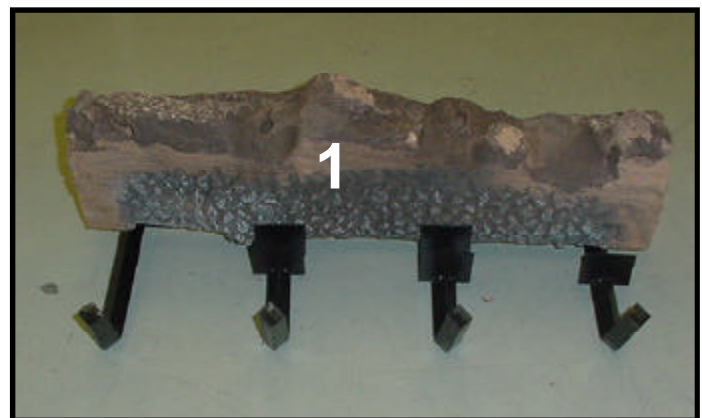
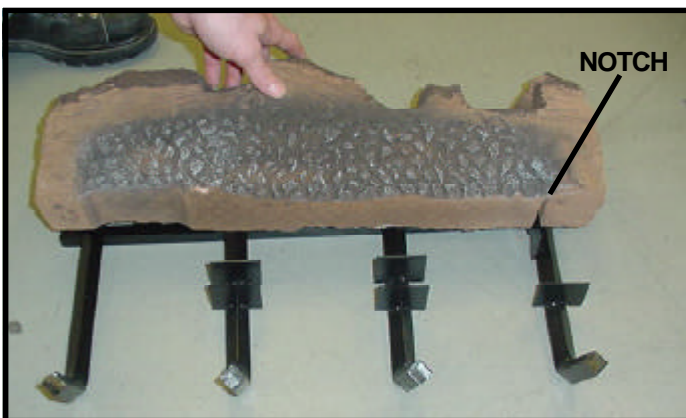


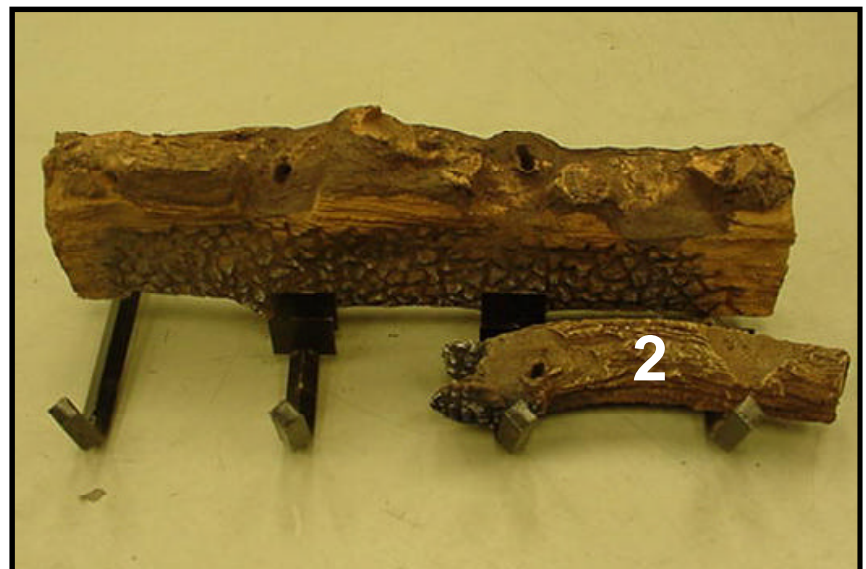
CAUTION: Logs are fragile! Carefully remove the logs from the packaging. Pull metal base pan forward before setting logs in place.



LOG #1 (SRV537-134): Place log #1 on the back of the grate, pull forward until it contacts the two rear locator tabs and place log notch over tab on the right side of the grate.

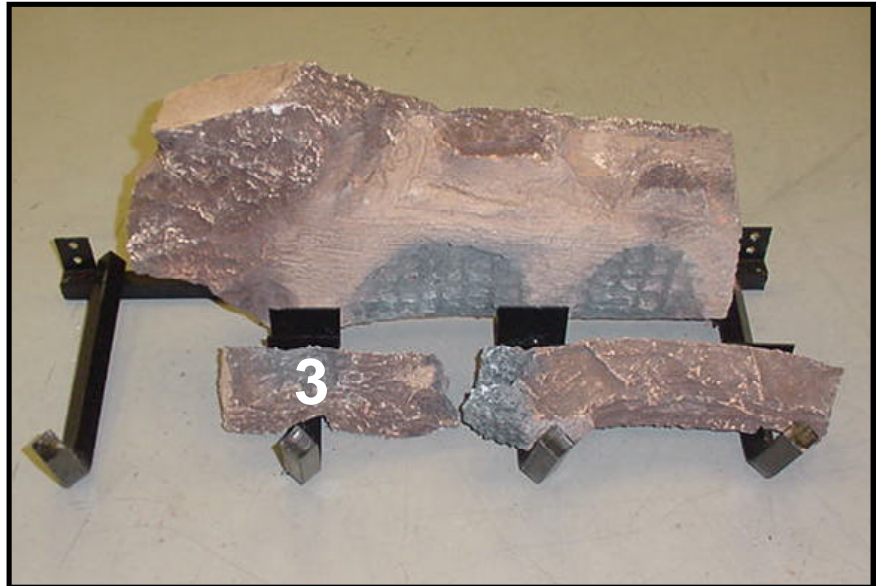
LOG #2 (SRV537-135):

Align the slot in the left bottom of log #2 with the third grate bar. Slide the log back until it contacts the two front log locator tabs.



LOG #3 (SRV544-707):

Align the slot in the bottom of log #3 with the second grate bar and rest the other end on the burner. Be sure the right end of log #3 is pushed back and to the right to contact the locator tab on the burner.



LOG #4 (SRV544-704):

Place log #4 on the flat spots of log #1 as shown.



LOG #5 (SRV446-715):

Place log #5 over log #2 and align with recess in log #2.



LOG #6 (SRV537-718):

Place the large end of log #6 on the edge of the grate bar and rest the burned end in the slot of log #1 as shown.



LOG #7 (SRV537-705):

Place log #7 as shown with the “Y” facing up and the other end between the first grate bar and log #6.



NOTE: Log set should look like photos. If sooting occurs, recheck for accurate log placement. If log placement is correct, readjust ember material until sooting is eliminated.