

Figure 1. Reference Points for Log Placement



Figure 2. Refractory and Logs Installed

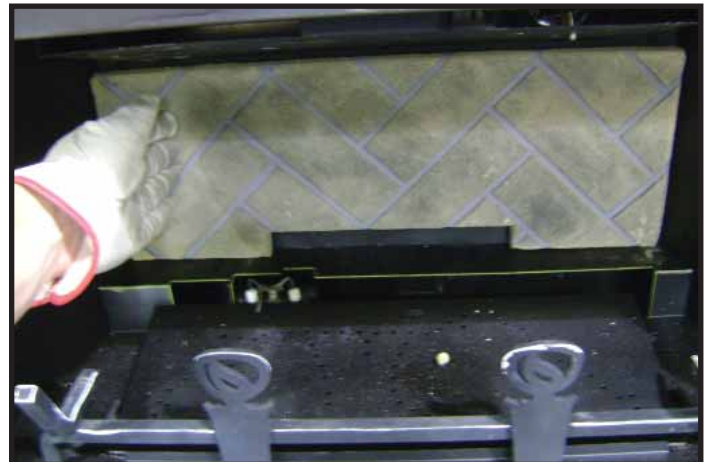


Figure 3. Install Back Refractory

CAUTION: Logs are fragile, handle with care. Install back refractory by placing it against the back of the firebox. See Figure 3. The back refractory must be held in the upright position until the side refractory is installed. Install the left side refractory as shown in Figure 4. Bend the refractory tab down as shown in Figure 5. Repeat this step for the right refractory panel.

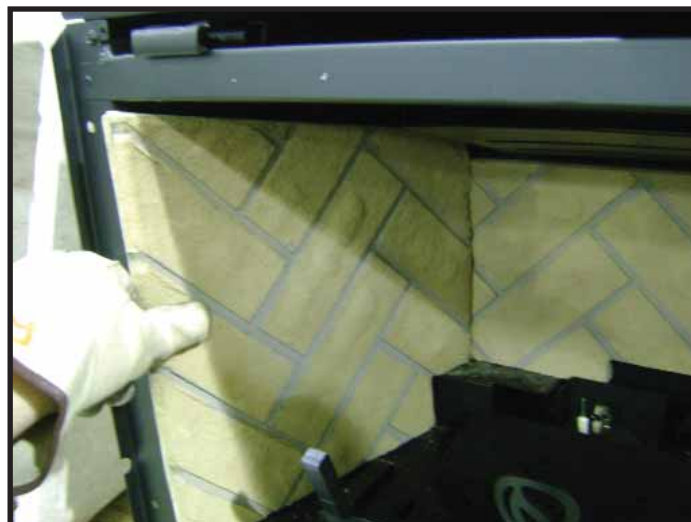


Figure 4. Install Side Refractory



Figure 5. Bend Refractory Tab

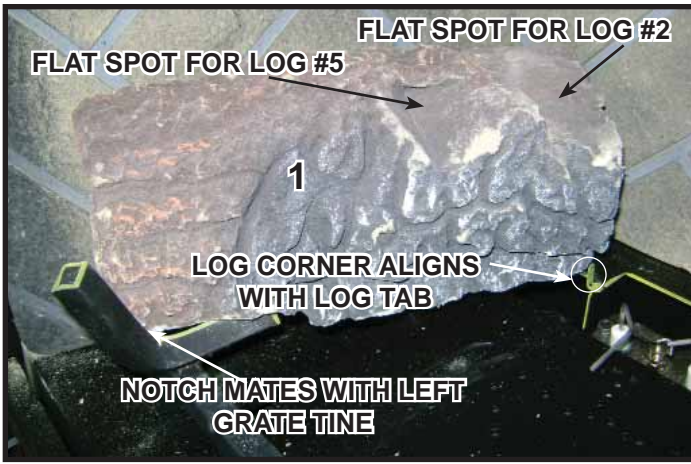


Figure 6. Placement of Log #1

Log #1 (SRV2227-703): Mate the notch located on the bottom of the log, with the left grate tine. See Figure 7. Bend the tab located to the left of the pilot assembly into the vertical position. Rotate the back end of log clockwise until it contacts the log tab as shown in Figure 6.

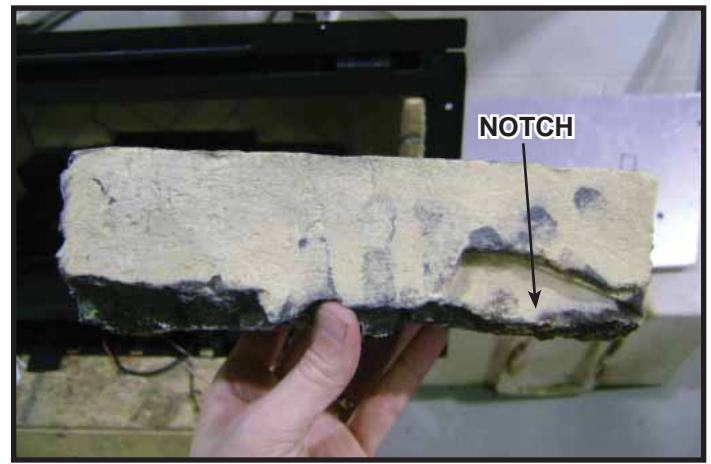


Figure 7. Location of Notch on Log #1

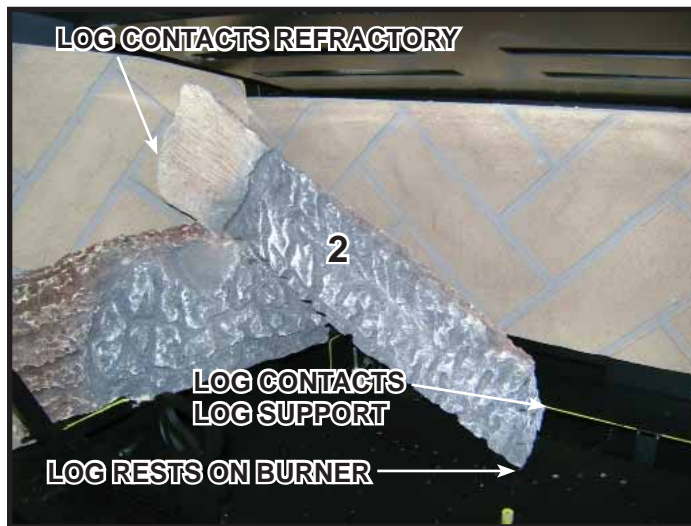


Figure 8. Place Log #2

Log #2 (SRV2227-702): Rest left end of log on the flat spot of Log 1. See Figure 6 and Figure 8. The left end of the log should touch the left refractory panel. The right end rests on the burner. Push the right end back, until it touches the edge of the log support.

Log #3 (SRV2227-701): Mate the notch with the right grate tine as shown in Fig 9. The back of the log should rest on the log support as shown. Rotate the back end of the log clockwise until it contacts the right refractory panel.



Figure 9. Log #3

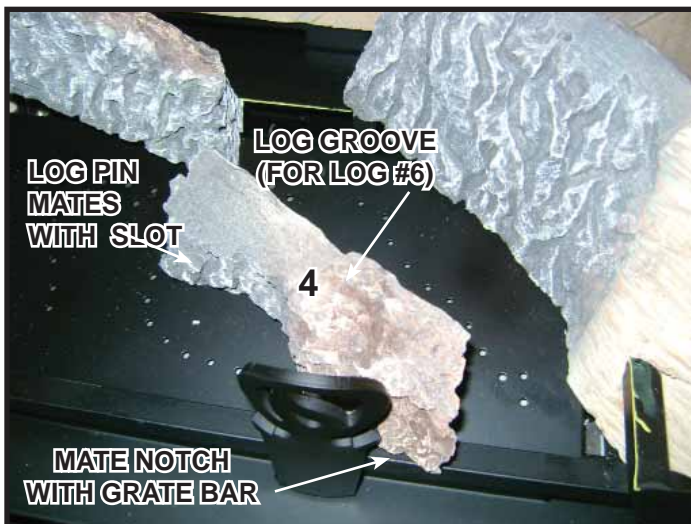


Figure 10. Log #4

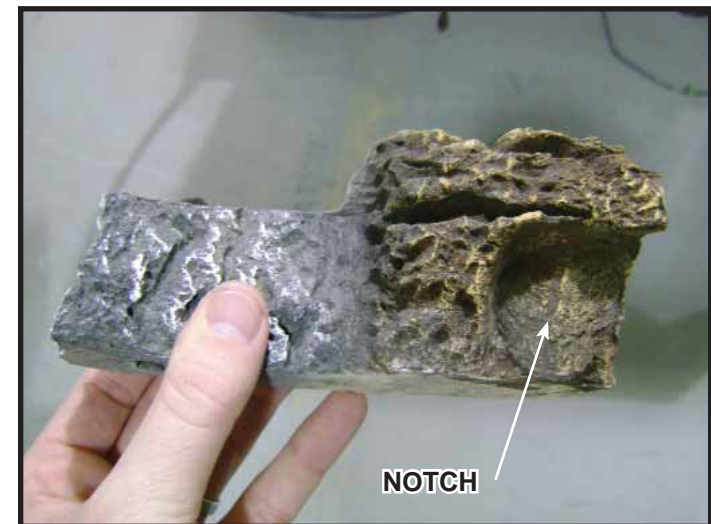


Figure 11. Log #4

Log #4 (SRV2227-705): Mate the slot on the bottom of the log, shown in Figure 12, with the log pin located on the burner surface. The notch on the right end of the log should mate with the grate bar. See Figure 11.

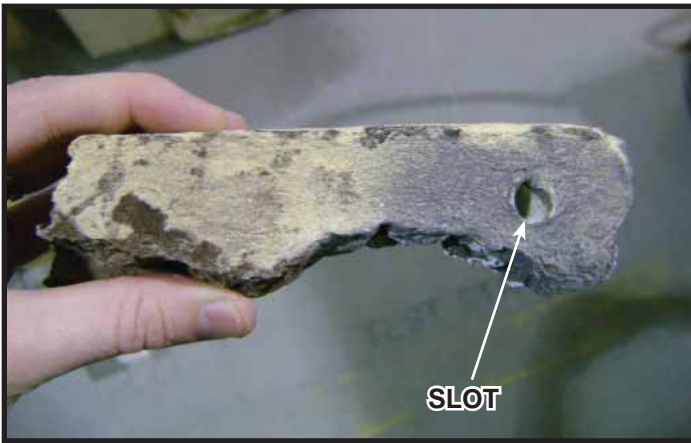


Figure 12. Log #4



Figure 13. Log #5

Log #5 (SRV2227-706): Place the left end of the log on the flat spot of log as shown in Figure 6. The right end of log should rest on the burner and touches the grate bar as shown in Figure 13.

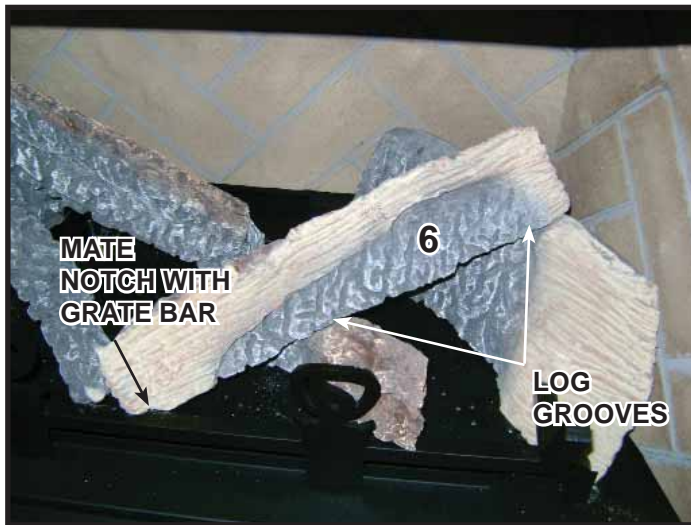


Figure 14. Place Log #6

Log #6 (SRV2227-704): Rest the left end of Log #6 on the burner. Mate the notch on the left end of log with the grate bar. The log should rest on both log grooves as illustrated in Figure 9 and Figure 10.