

# Log Set Assembly: LOGS-QFI35

Models: QFI35, QFI35-C

# LOG PLACEMENT INSTRUCTIONS

**CAUTION:** Logs are fragile, handle with care.



Figure 1. Refractory and Logs Installed



Figure 2. Install Back Refractory

Install back refractory by placing it against the back of the firebox. The back refractory must be held in the upright position until the side refractory is installed. Install the left side refractory as shown in Figure 3. Bend the refractory tab down as shown in Figure 4. Repeat this step for the right refractory panel.



Figure 3. Install Side Refractory

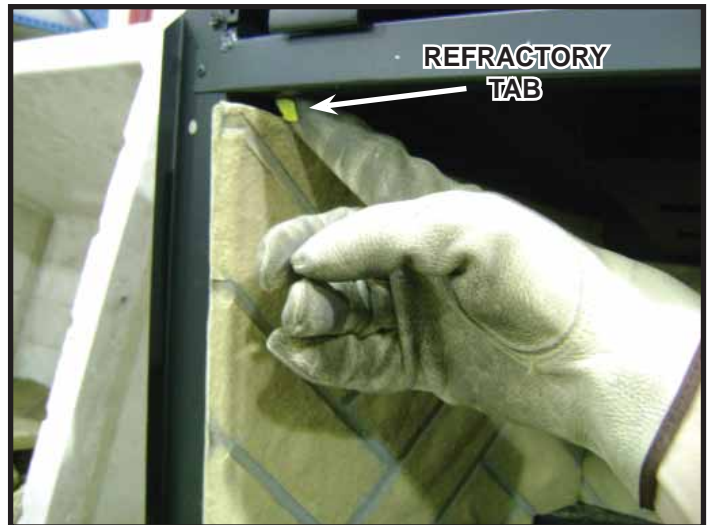


Figure 4. Bend Refractory Tab

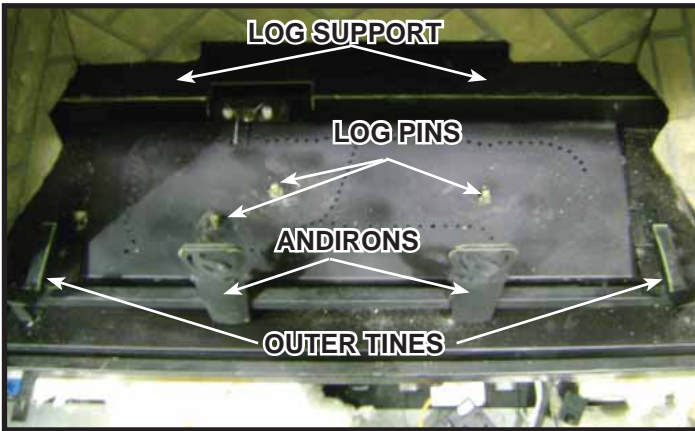


Figure 5.

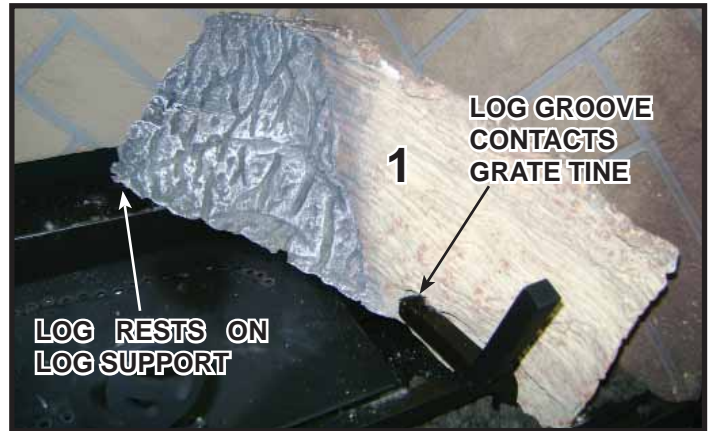


Figure 6. Location of Log #1

**Log #1 (SRV2225-701):** Position the groove on the log with the right grate tine as shown in Figure 6. The opposite end of the log will rest on the log support. Rotate the opposite end of the log clockwise until it contacts the refractory panel.

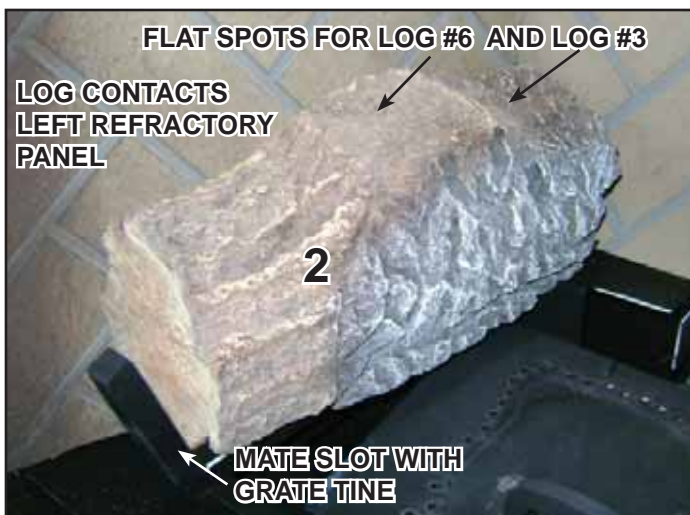


Figure 7. Place Log #2

**Log #2 (SRV2225-703):** Mate the grate tine with the slot on the bottom of Log #2. The back end of the log rests on the log support. The side of the log will contact the left refractory as shown in Figure 7.

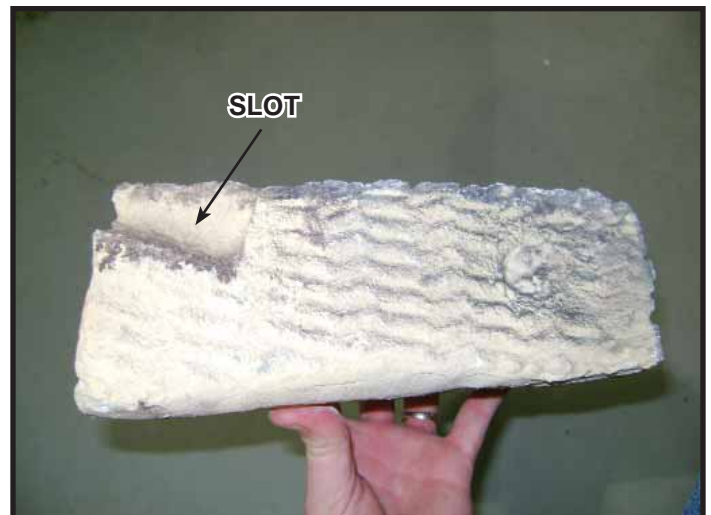


Figure 8. Slot on Log #2

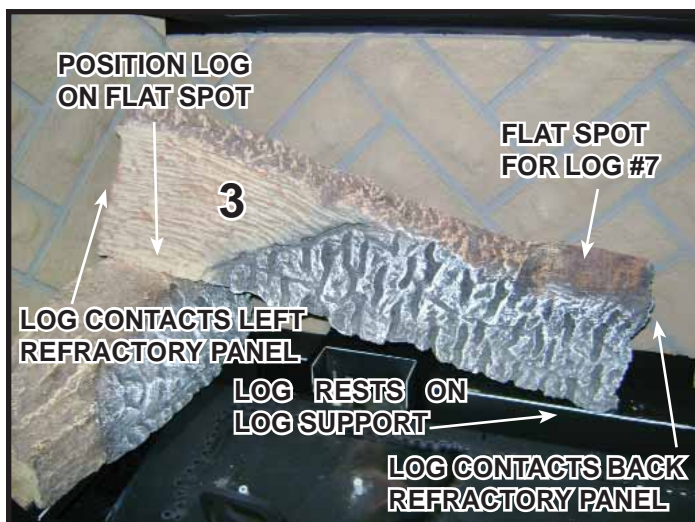


Figure 9. Place Log #3

**Log #3 (SRV2225-702):** Position the left end of the log on the flat spot of Log #2 as shown in Figure 7 and Figure 9. The right end of the log rests on the log support and touches the back refractory. The left end of the log should contact the left refractory panel.



Figure 10. Place Log #4

**Log #4 (SRV2225-705):** Mate the slot on the bottom of Log #4 with the right log pin. Refer to Figure 11 for location of log slot. Rotate the right end of the log clockwise until the groove on the end of the log mates with the grate bar.

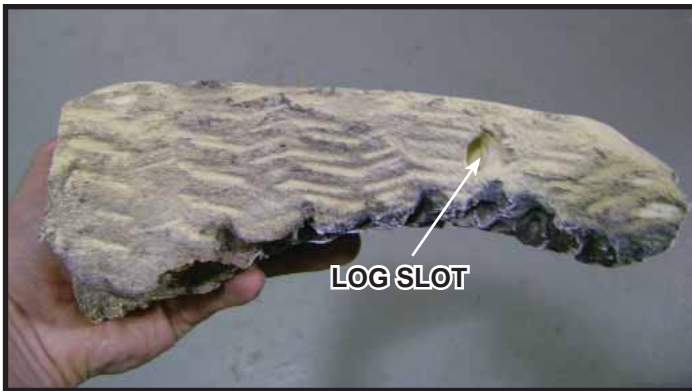


Figure 11. Log #4

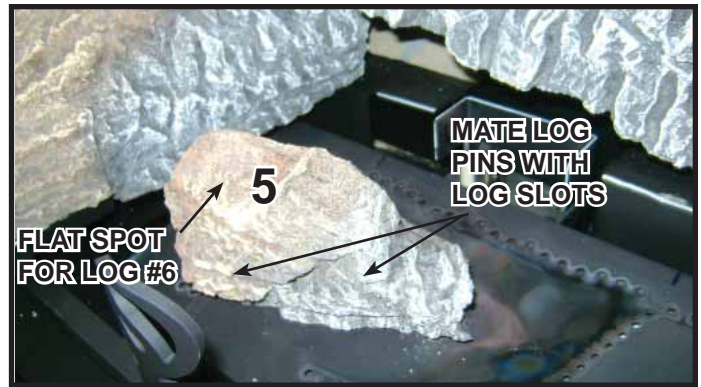


Figure 12. Place Log #5

**Log #5 (SRV2225-710):** Position Log #5 as shown in Figure 12. Mate the middle and left log pins with the two slots located on the bottom of the log. See Figure 13 for locations of log slots. The smaller end should be pointed toward the right side of the firebox.

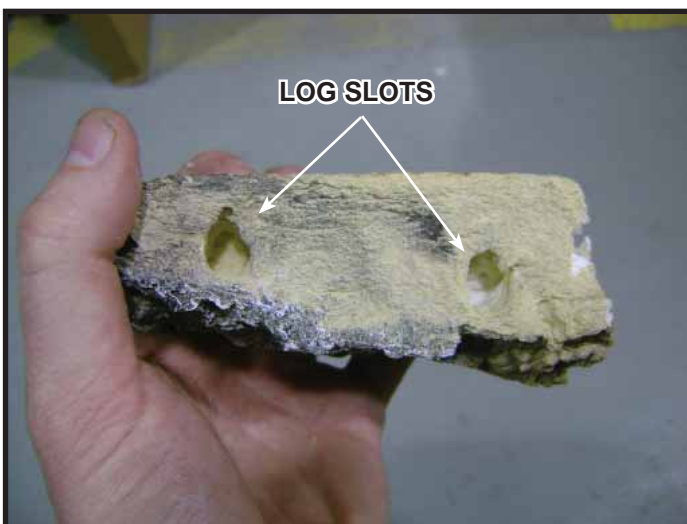


Figure 13. Log #5



Figure 14. Place Log #6

**Log #6 (SRV2225-706):** Rest the wide end of the log on the flat spot of Log #5 as shown in Figure 12 and Figure 14. Place the narrow end on the flat spot of Log #2. Flat spot on Log #2 is indicated in Figure 7.

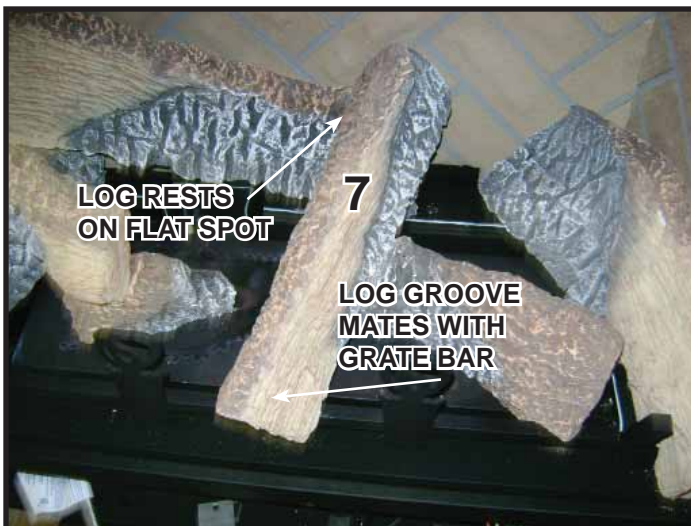


Figure 15. Place Log #7

**Log #7 SRV2225-704):** Note the location of the groove on the underside of the log. Place the opposite end on the flat spot on Log #3. See Figure 9. Mate the groove on the underside of the log with the grate bar as shown in Figure 15, centered between the andirons.