

# Log Set Assembly: LOGS-QFI30FB

# LOG PLACEMENT INSTRUCTIONS

Models: QFI30FB, QFI30FB-C, QFI30FB-IFT

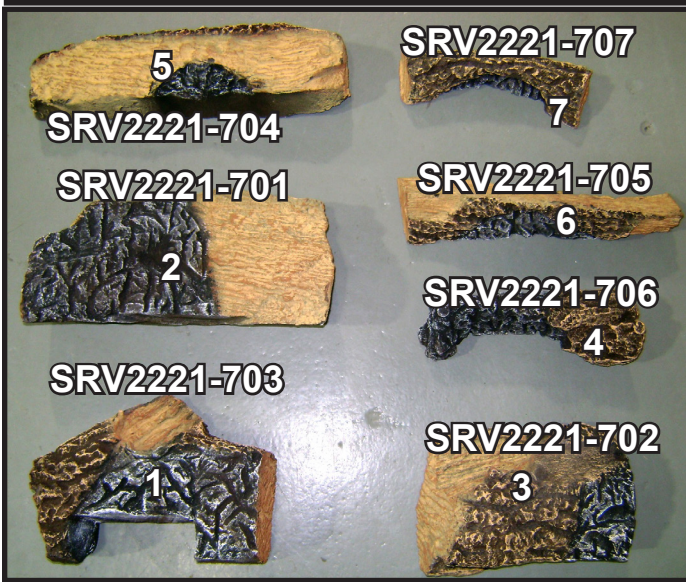


Figure 1. Logs Installed

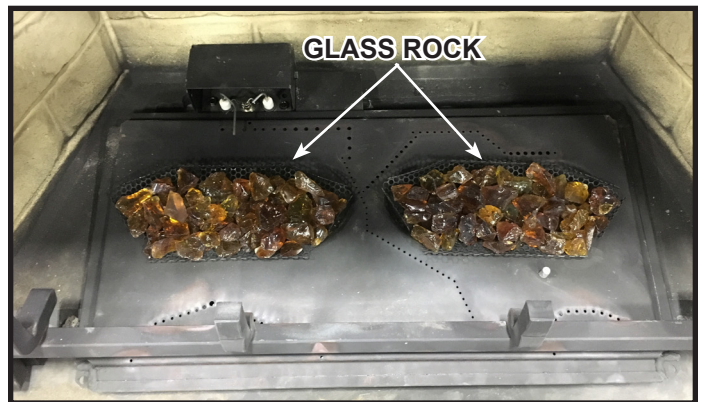
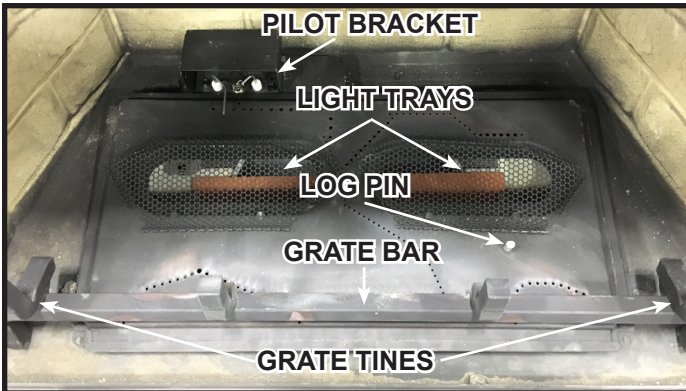


Figure 2. Reference Points for Log Placement

Figure 3. Install Glass Rock

**CAUTION: Logs are fragile, handle with care.**

**Glass Rock (2201-853):** Fill each light tray evenly with the glass rock.

**WARNING! Risk of Explosion! DO NOT place glass rock on the burner surface. DO NOT place glass rock directly over burner ports. Improperly placed glass rock interferes with proper burner operation.**

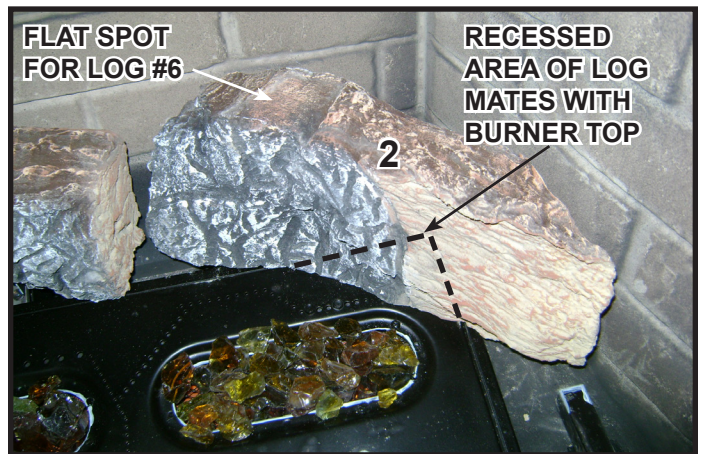
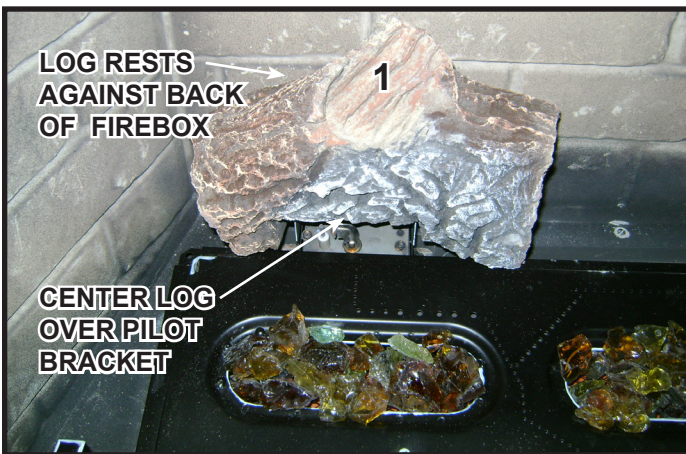


Figure 4. Place Log #1

Figure 5. Place Log #2

**Log #1 (SRV2221-703):** Position Log #1 as shown in Figure 4. See Figure 2 for additional points of reference. Center the log over the pilot bracket. Pull the log forward until contact is made with burner.

**Log #2 (SRV2221-701):** Position Log #2 as shown in Figure 5. See Figure 2 and Figure 6 for additional points of reference. The recessed area on the bottom of the log and the back right corner of the burner top mate.



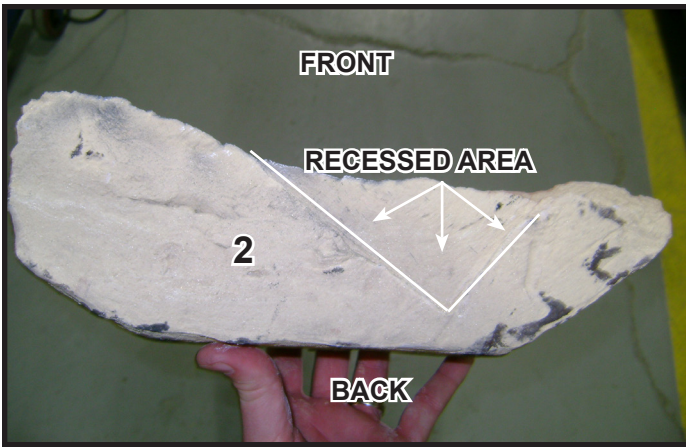


Figure 6. Log #2

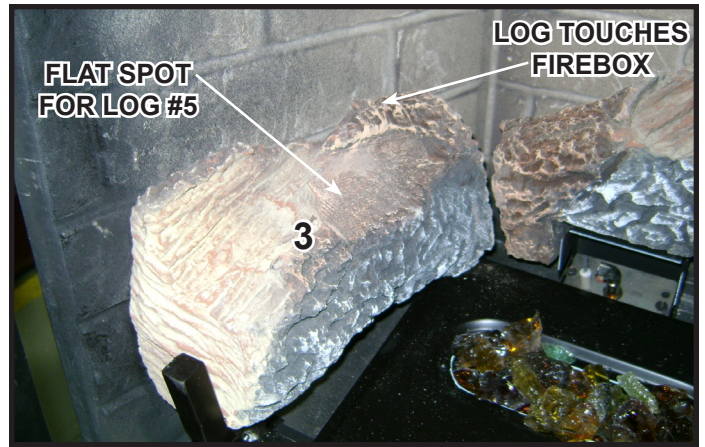


Figure 7. Place Log #3

**Log #3 (SRV2221-702):** Position Log #3 as shown in Figure 7. See Figure 2 and Figure 8 for additional reference points. Mate the base of the left grate tine with the groove located on the bottom of the log. Pull the log forward until it stops against the vertical portion of the grate tine. Swing the rear of the log counterclockwise until it touches the firebox.

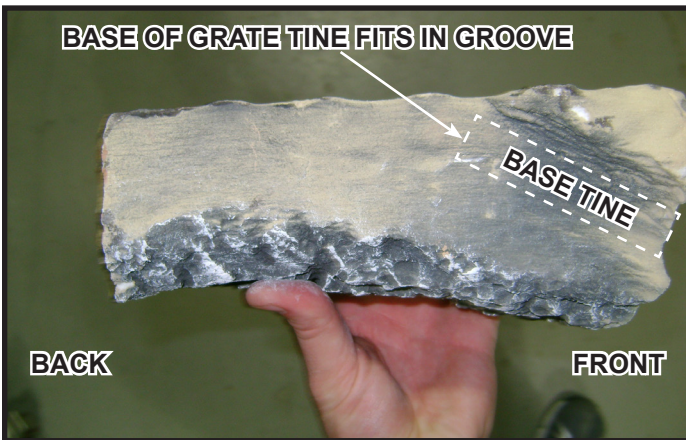


Figure 8. Log #3 - Bottom View

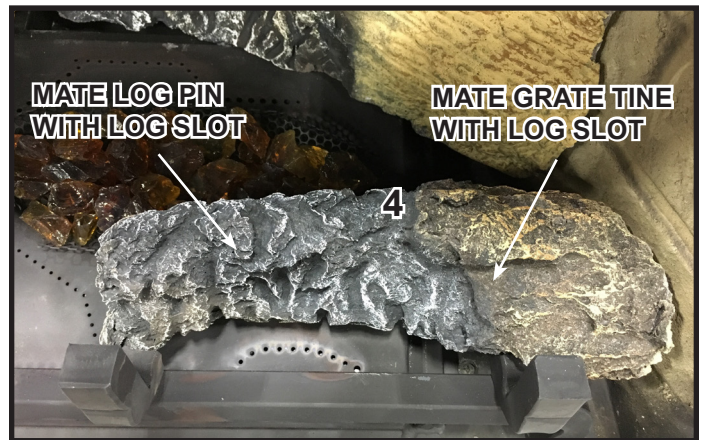


Figure 9. Place Log #4

**Log #4 (SRV2221-706):** Position Log #4 as shown in Figure 9. See Figure 2 and Figure 10 for additional references. Mate the grate tine slot with the base of the right grate tine. The grate tine slot is located on the bottom right end of Log #4. See Figure 10. Slide the right end of the log forward until the tine fully engages the slot. Mate the log pin slot with the right log pin.

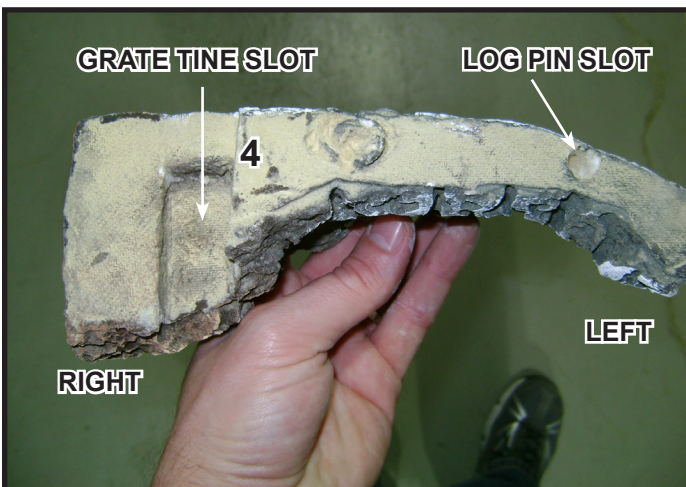


Figure 10. Log #4 - Bottom View



Figure 11. Place Log #5

**Log #5 (SRV2221-704):** Position Log #5 as shown in Figure 11. See Figure 2 and Figure 12 for additional references. Rest the left end of Log #5 on the flat spot indicated in Figure 7. Locate right end of log against the grate and to the left of the log pin. Ensure the nose of the log does not cover any burner ports.



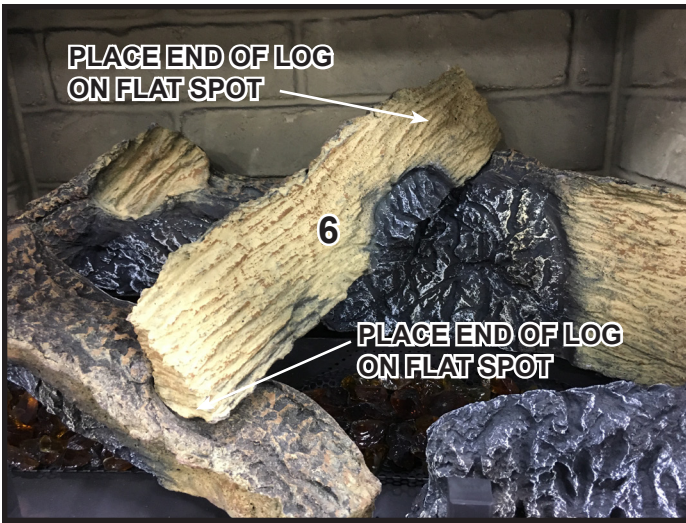


Figure 12. Place Log #6

**Log #6 (SRV2221-705):** Position Log #6 as shown in Figure 12. See Figures 2, 5 and 11 for additional reference points. Place the front end of log #6 on the flat spot indicated in Figure 11. Place the back end of Log #6 on the flat spot indicated in Figure 5.

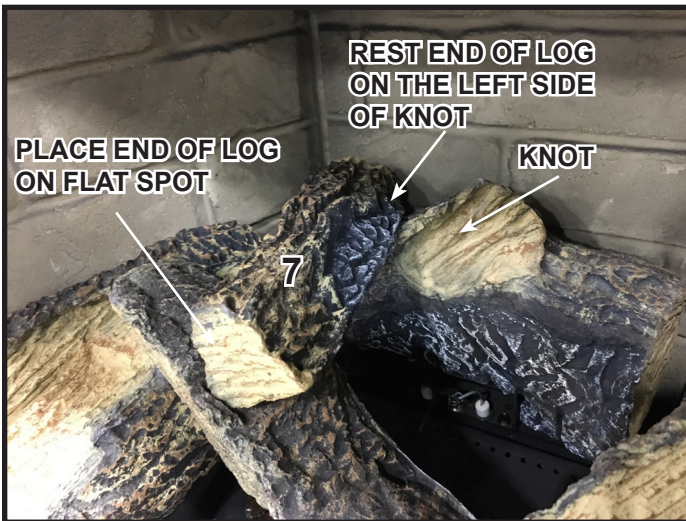


Figure 13. Place Log #7

**Log #7 (SRV2221-707):** Position Log #7 as shown in Figure 13. See Figure 2 and 11 for additional reference points. Place the front end of Log #7 on the flat spot indicated in Figure 11. Place the back end of Log #7 on the left side of the knot. See Figure 13.