

Log Set Assembly: LOGS-BV36
Model: BV4236DBI

LOG PLACEMENT INSTRUCTIONS

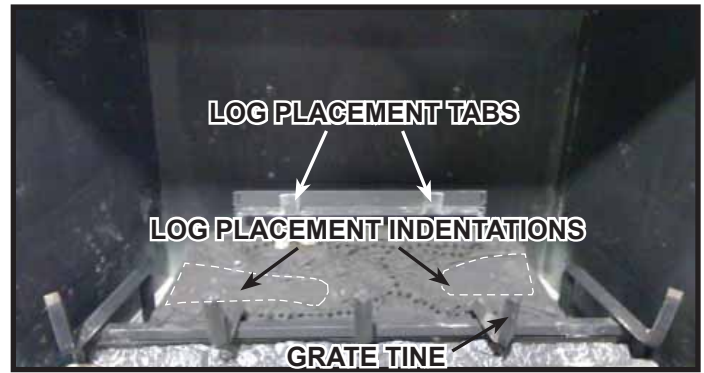
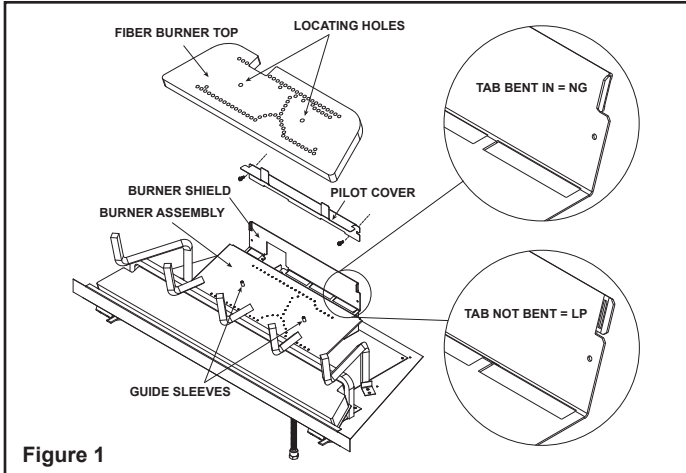


Figure 2. Log Placement Tabs

CAUTION: Logs are fragile, handle with care. **Log #1 (SRV2209-701):** Locate log placement tabs on the pilot cover (see Figure 2). Locate the log placements slots on the bottom of Log # 1 (see Figure 3). Mate the slots located on the bottom of Log #1 with the log placement tabs on the pilot cover. Log # 1 is properly installed when it sits squarely and completely on pilot cover with tabs engaged (see Figure 4).

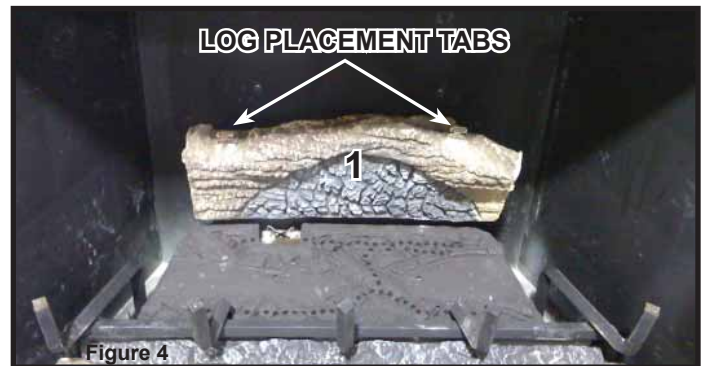
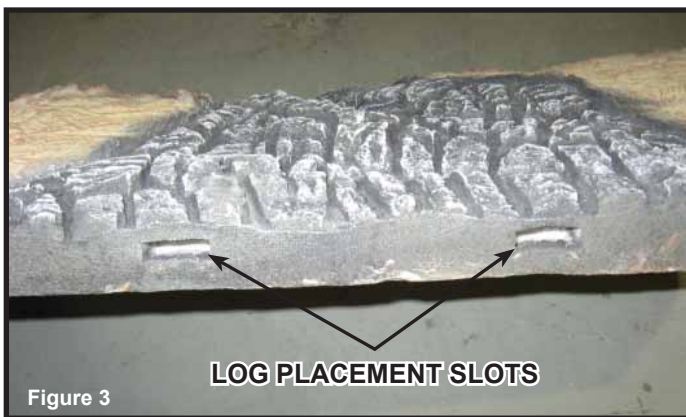


Figure 4

Figure 4 shows the log placement tabs located on the top of Log # 1. The tabs will be mated with the slots located on the bottom of Log #2 and Log #3 (see Figure 5). Log #2 and Log #3 also have grooves that allow the logs to be seated properly on the grate (see Figure 5). Hold Log #1 upright while placing Log #2 and Log #3.

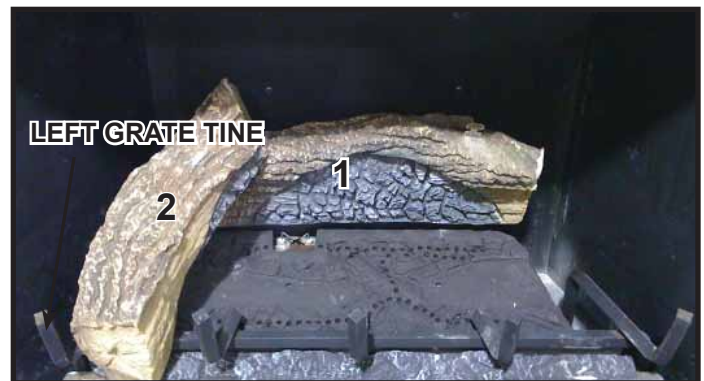
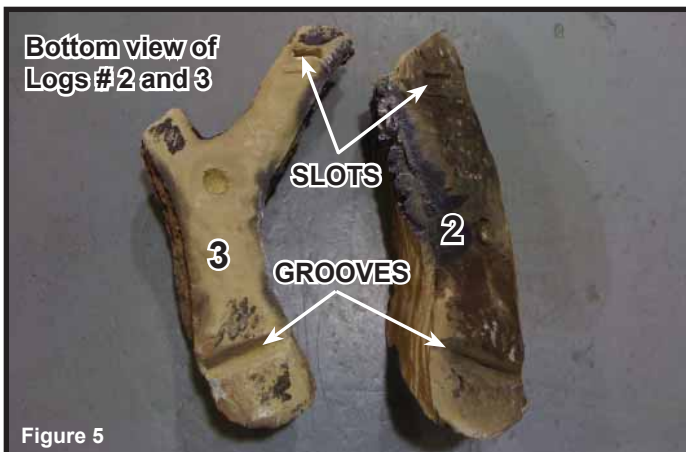


Figure 6

Log #2 (SRV2209-702): Mate the slot located on the bottom of Log #2 with the left tab on top of Log #1. After slot and tab have been fitted together, mate the groove located on the bottom of Log #2 with the horizontal grate bar and slide Log # 2 toward the left until it rests against the far left grate tine.

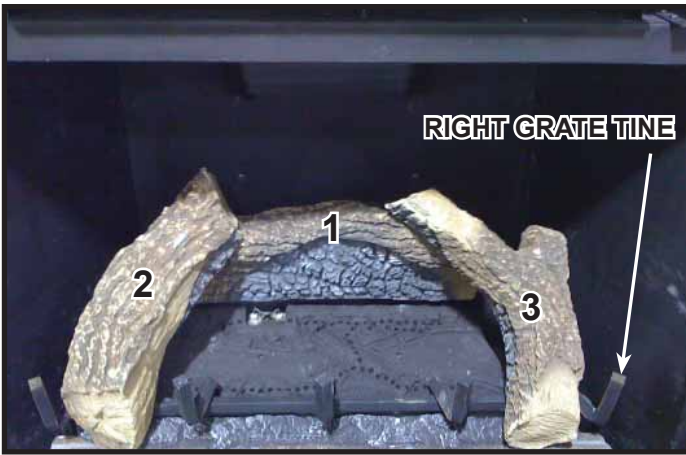


Figure 7

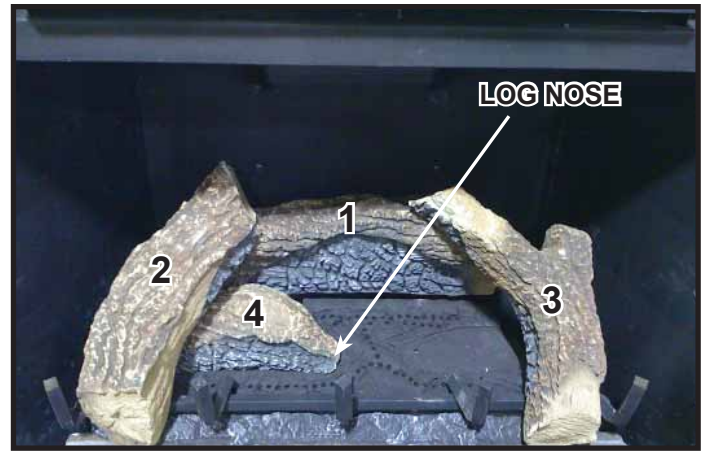


Figure 8

Log #3 (SRV2209-703): Mate the slot located on the bottom of Log #3 with the right log placement tab on top of Log #1. After slot and tab have been fitted together, mate the groove located on the bottom of Log #3 with the horizontal grate bar and slide Log # 3 toward the right until it rests against the far right grate tine (see Figure 7).

➔ **Log #4 (SRV2164-724):** Place Log #4 in the left log placement indentation on the burner top (see Figure 2). Slide Log # 4 from right to left under Log #2 to fit completely and securely into the log placement indentation (see Figure 8). Nose of log #4 should be pulled to fit securely against right hand side of log indentation.

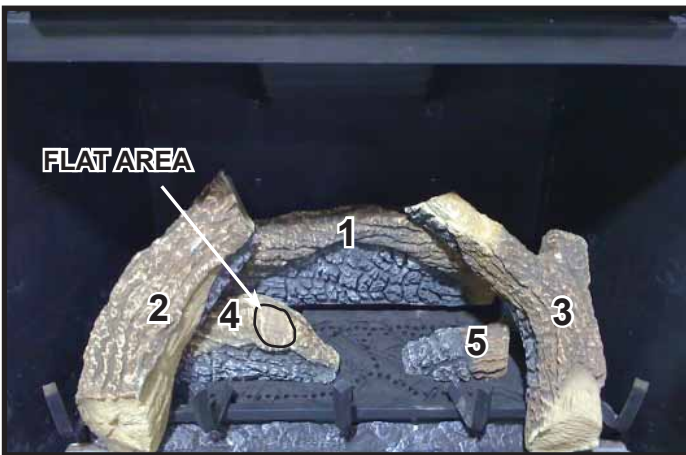


Figure 9

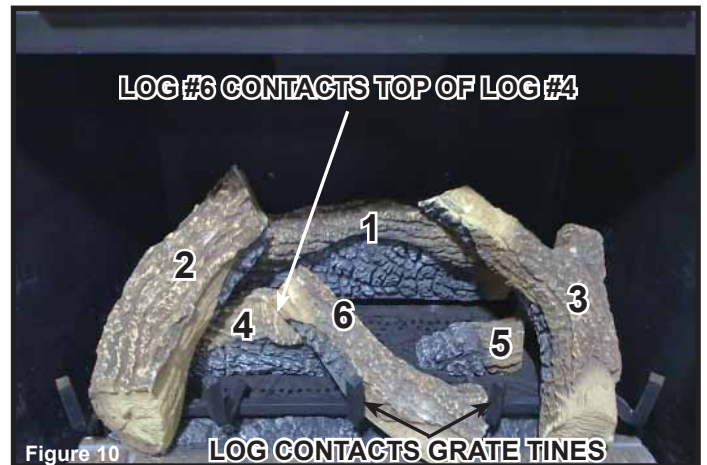


Figure 10

Log #5 (SRV2209-705): Place Log #5 in the right log placement indentation on the burner top (see Figure 2). Ensure the log fits completely and securely in the recessed log placement indentation (see Figure 9). Log #5 should be pulled to the left hand side of log indentation.

Log #6 (SRV2209-706): Mate the groove located on the lower end of Log #6 with the fourth grate tine (from left to right) as shown in Figure 10. Set the other end of Log #6 on the flat area located on top of Log #4 (see Figures 9 and 10). Log #6 will also rest against the center grate tine. When properly installed, Log #6 will rest securely on all 3 contact points, not allowing movement or shifting.

2209-935B