

Log Set Assembly: LOGS-FB-ZC Model: FB-ZC

EMBER and LOG PLACEMENT INSTRUCTIONS

Ember Placement

Two separate bags of ember material are shipped with this gas appliance. The bag labeled Glowing Ember (050-721) is standard glowing ember material. To place the ember material:

- Remove the glass door from the unit.
- Place a dime size piece of **GLOWING EMBER** material near port holes in burner top (see Figure 1).
- Space dime size ember pieces about a 1/2 inch apart. Never press embers into burner ports. **DO NOT** cover burner ports. Place dime size pieces around front and sides of burner pan.
- Save the remaining ember materials for use during fire-place servicing. The embers provided are sufficient for 2 to 4 applications.
- Place **MYSTIC EMBERS** over burner surface and around base of the burner, **DO NOT** cover any burner port holes. Can be used on floor of firebox for a realistic ash-bed.

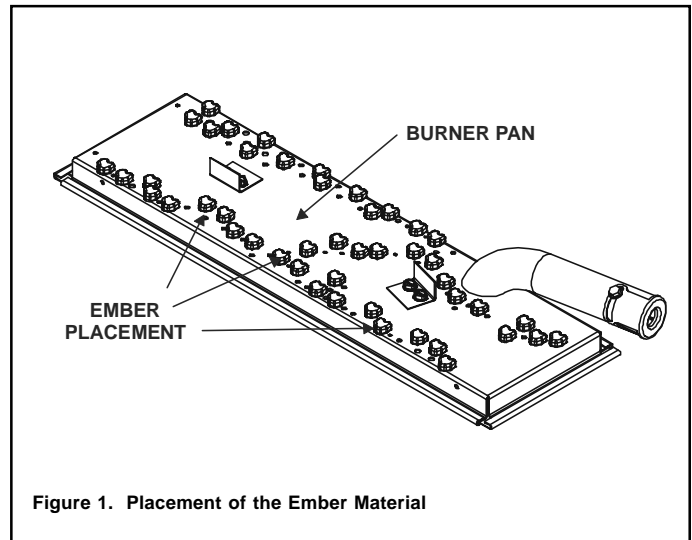
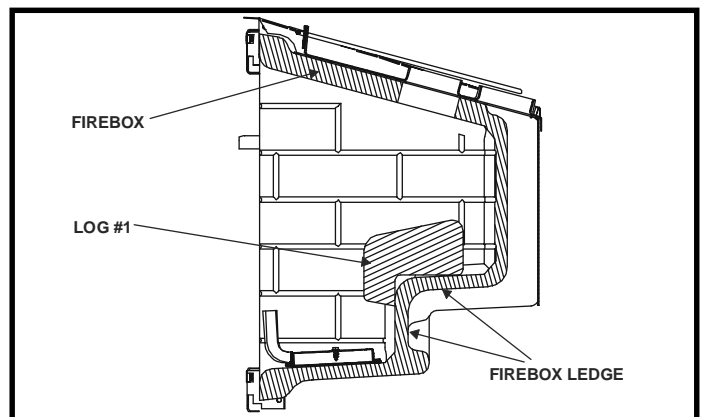
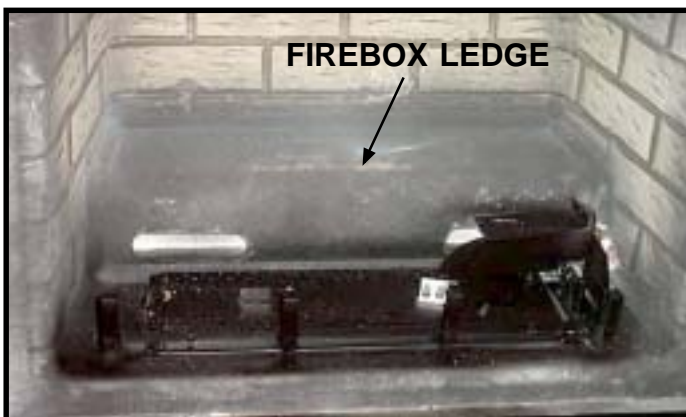
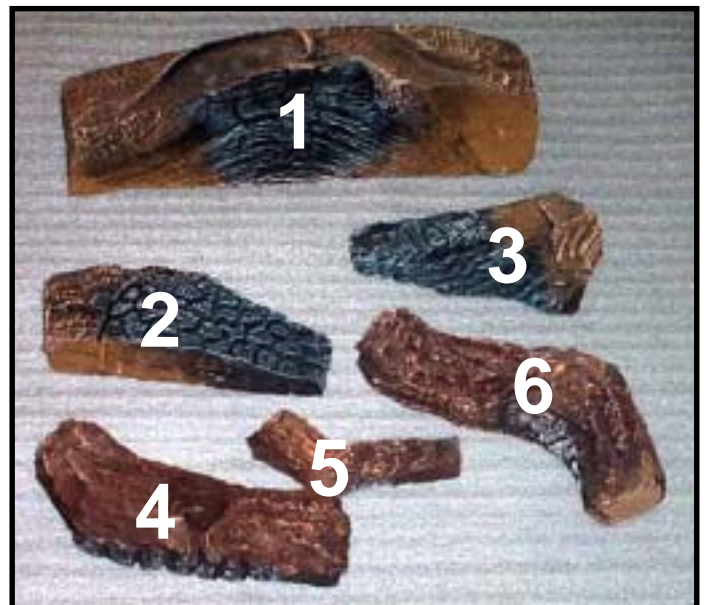
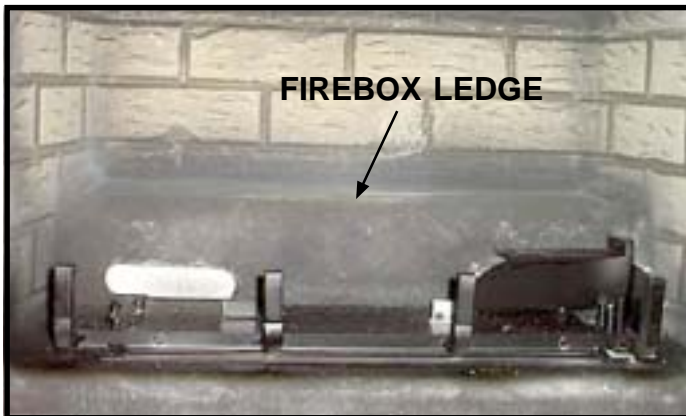
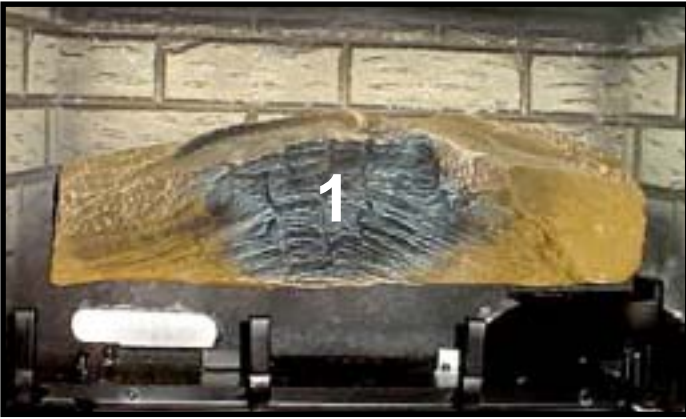


Figure 1. Placement of the Ember Material

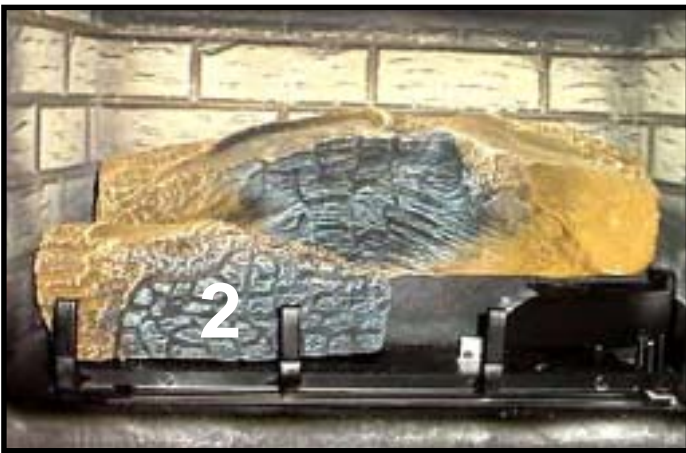
Log Placement

CAUTION: Logs are fragile! Carefully remove the logs from the packaging.

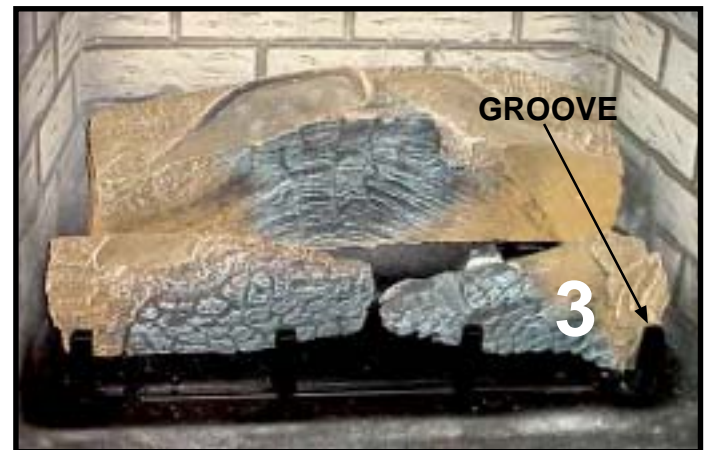
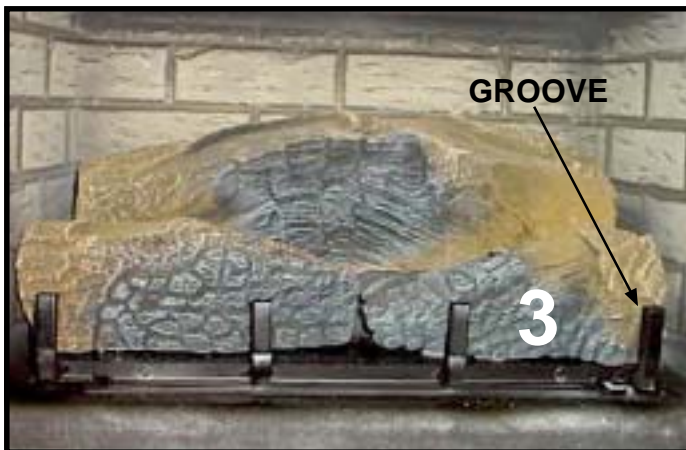




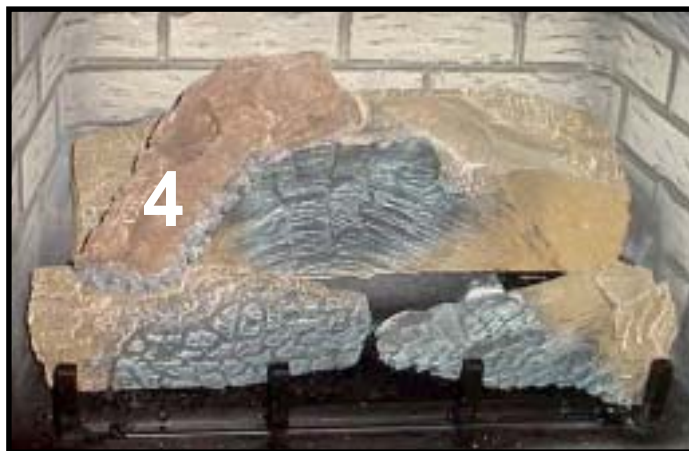
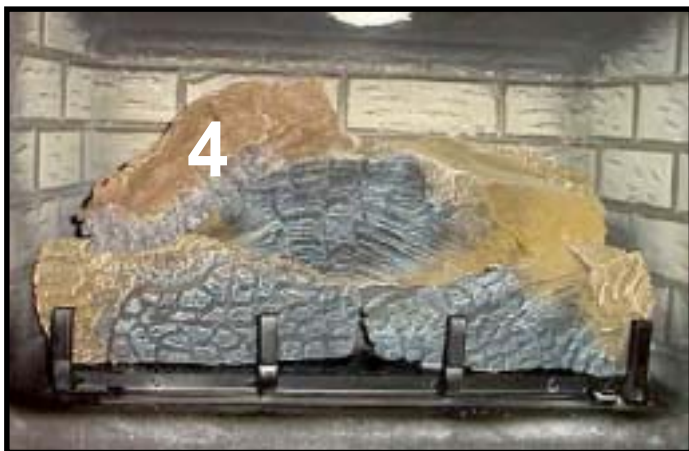
LOG #1 (SRV2019-701): Place log #1 on the firebox ledge as shown. The front portion of the log should hang over the ledge as shown. The log should be placed all the way back and in the center of the ledge.



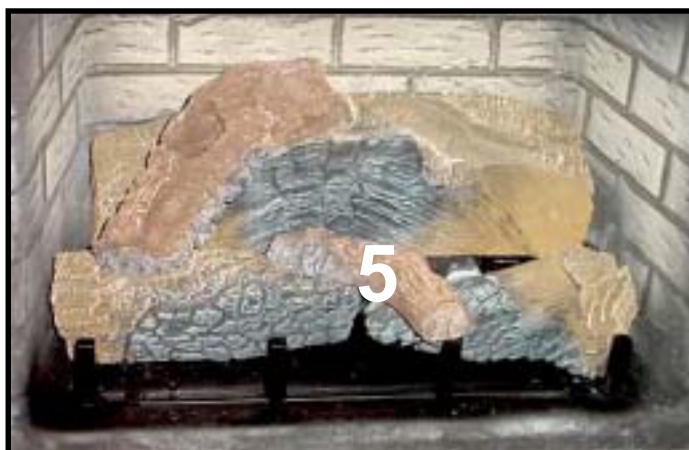
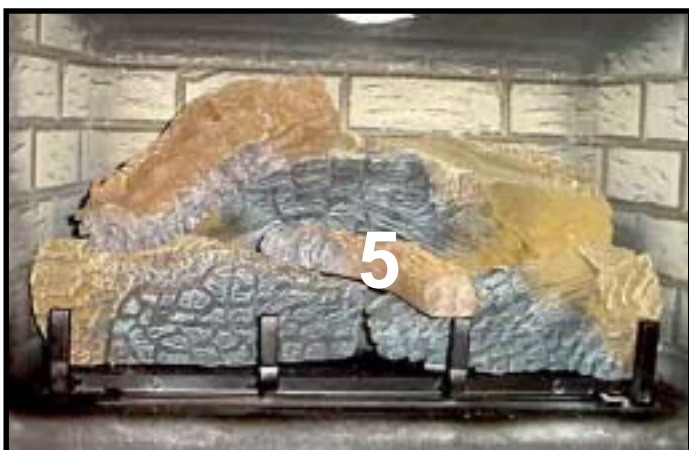
LOG #2 (SRV2019-702): Position log #2 by locating its slot over the tabs on left front of the burner.



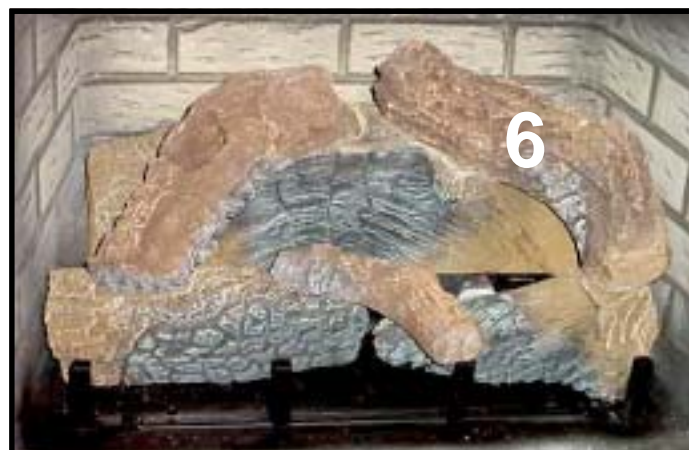
LOG #3 (SRV2019-703): Position log #3 by locating it against tab on right center of the burner. The groove on the right end of log #3 should be flush against the right grate tine.



LOG #4 (SRV327-705): Place log #4 across log #1 and log #2 in the grooved out areas as shown.



LOG #5 (SRV740-707): Place log #5 across the flat on log #3 such that the ends of the log contact the grate and log #2 as shown.



LOG #6 (SRV571-707): Place log #6 across log #1 and log #3 in the grooved out areas as shown.