

# VWF24MOST MASSIVE OAK SEE THROUGH LOGS

## Installation Instructions

The information on this sheet supersedes the information listed in the VWF series Owner's Manual. Please keep this sheet with your Owner's Manual and Warranty Packet for future reference.

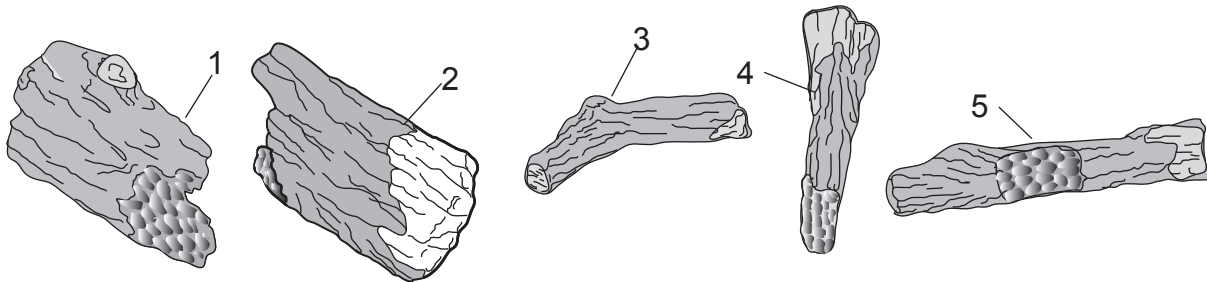
This log set for use only with the VWF24 see through series engine/grate.

**WARNING**

The positioning of the logs is critical to the safe and cleanest operation of this gas log set. Problems may result if the logs are not properly positioned per these instructions.

Failure to position the parts in accordance with diagrams below or to not use only parts specifically approved for this log set may result in property damage or personal injury.

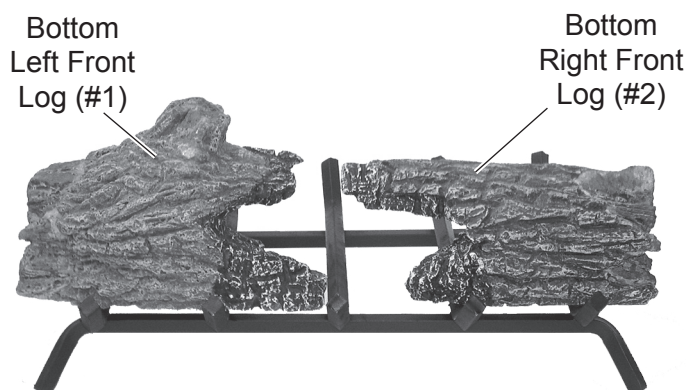
Item	Description	Qty	VWF24MOST
1	Bottom Left Front Log	2	27D7507
2	Bottom Right Front Log	2	27D7508
3	Left/Right Curved Log	2	27D8581
4	Top Left/Right Split/Char Log	2	27D8834
5	Curved Center Top Log	1	27D8832



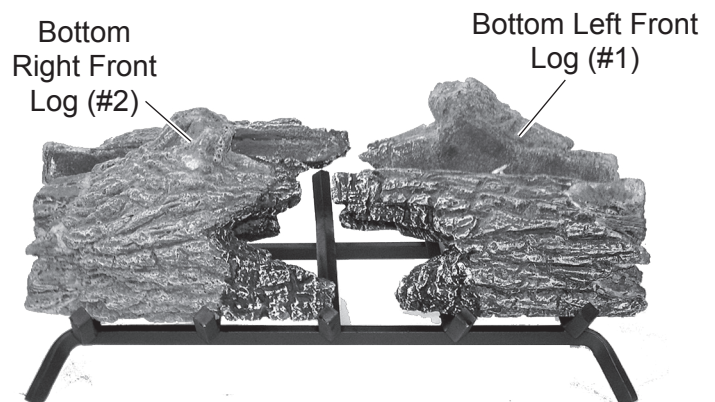
### MASSIVE OAK SEE THROUGH LOGS INSTALLATION SEQUENCE

1. Place bottom left front log (#1) and bottom right front log (#2) on front of grate. *See Figure 1.*
2. Place bottom left front log (#1) behind bottom right front log (#2) on back of grate. *See Figure 2.*
3. Place bottom right front log (#2) behind bottom left front log (#1) on back of grate. *See Figure 2.*

*Continued*



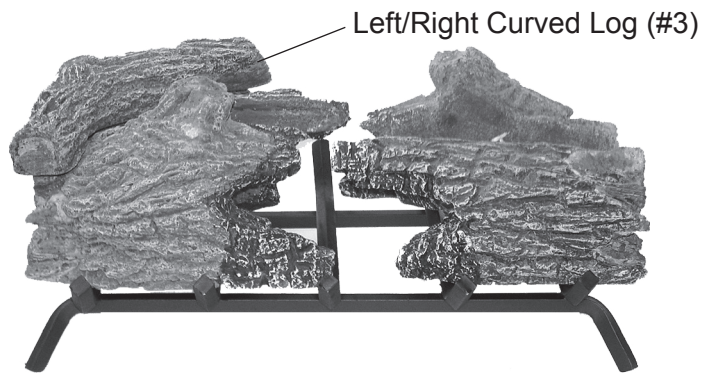
**Figure 1 - Placing Left Front Log (#1) and Right Front Log (#2)**



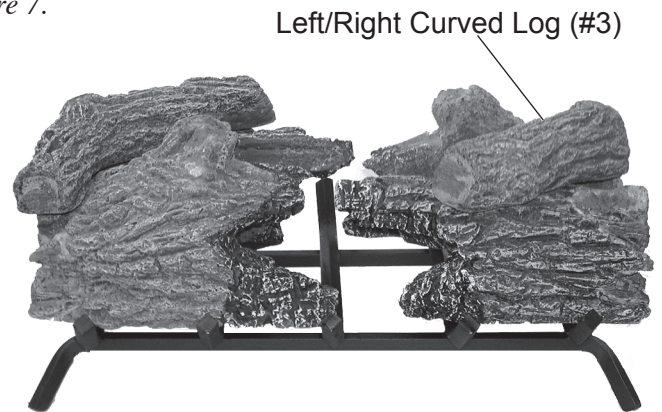
**Figure 2 - Placing Left Front Log (#1) and Right Front Log (#2) behind Bottom Front Logs**

## MASSIVE OAK SEE THROUGH LOGS INSTALLATION SEQUENCE (*continued*)

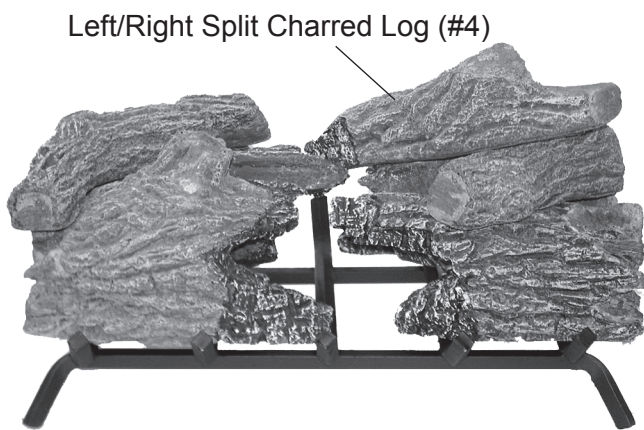
4. Place left/right curved log (#3) on top of front and back bottom left logs. *See Figure 3.*
5. Place left/right curved log (#3) on top of front and back bottom right logs. *See Figure 4.*
6. Place left/right split charred log (#4) on top of front and back bottom left logs. *See Figure 5.*
7. Place left/right split charred log (#4) on top of front and back bottom right logs. *See Figure 6.*
8. Place top log (#5) on top of left/right charred logs. *See Figure 7.*



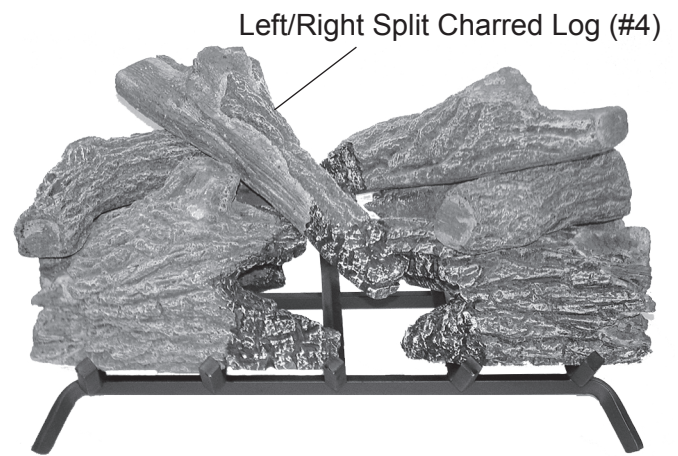
**Figure 3 - Placing Left/Right Curved Log (#3) on Bottom Left Logs**



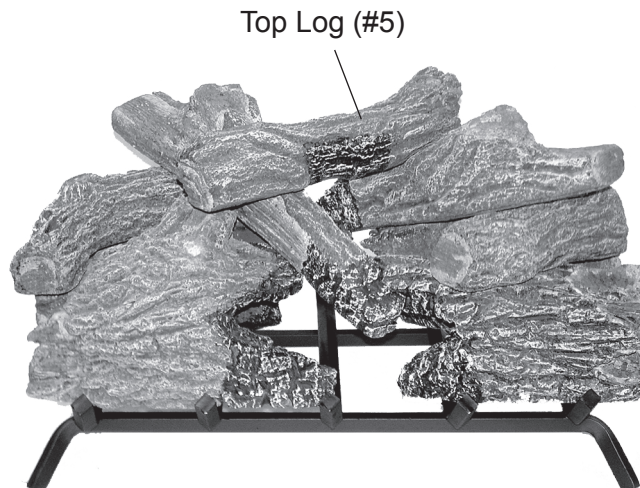
**Figure 4 - Placing Left/Right Curved Log (#3) on Bottom Right Logs**



**Figure 5 - Placing Left/Right Split Charred Log (#4) on Bottom Left Logs**



**Figure 6 - Placing Left/Right Split Charred Log (#4) on Bottom Right Logs**



**Figure 7 - Placing Top Log (#5) on Top of Left/Right Charred Logs**