

Direct Vent Gas Fireplaces

FINE DESIGNS TO SUIT ANY STYLE

 **MONESSEN**



LET YOUR FIREPLACE LIGHT UP YOUR STYLE

You know what you like. That's why Monessen direct vent gas fireplaces are available in a variety of designs. From specialty and contemporary options to more traditional, there's a model designed to reflect your style. Discover all your options and find the right Monessen fireplace for you.



Serenade shown with Driftwood log set. (pg.12-13)



ALL OUR DIRECT VENT GAS MONESSEN FIREPLACES OFFER GREAT FEATURES LIKE THESE.

CHECK OUT THE VIEW

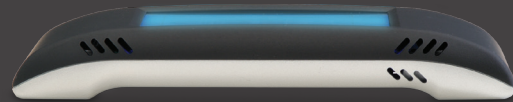
Designed to deliver a beautiful flame picture, all our fireplaces provide an expansive view of the fire that will delight friends and family.

COZY COMFORT

No matter which style you choose, you can be sure everyone will cozy up to our Monessen fireplaces that deliver ample BTUs to help heat your home.

EXCLUSIVE SIGNATURE COMMAND® SYSTEM

Enjoy the ultimate in fireplace control, featuring a touch screen remote* and 3-step flame height adjustment. With electronic ignition, this system lights the pilot only when you turn it on to help save energy. And, with automatic battery back-up, you can be assured of fireplace operation even if the power goes out.



Look for Total Signature Command® on select models, featuring the exclusive Smart Mode® thermostat for enhanced energy efficiency, rear burner shut down and more!

READ MORE ABOUT Signature Command® OPTIONS ON THE BACK COVER!

*Available with select fireplaces. Signature Command® not available with the Lexington fireplace.

SAFETY FIRST

Because our fireplaces were designed to deliver maximum BTUs to provide the best heating solutions for your home, the units will become hot to the touch. Consequently, all Monessen direct vent fireplaces come standard with a certified safety barrier. The screen barrier affixes to your fireplace and has been approved by a third party testing agency to conform to specific standards designed to prevent injury from hot glass.

CERTIFIED
SAFETY BARRIER

EXPRESS YOUR CLASSIC STYLE

With a more traditional design including louvers and a realistic log set, you can achieve a classic look that becomes a centerpiece of style for your home. Plus, the large format provides a wide viewing area that showcases the dancing flames from anywhere in the room.

MANCHESTER QUICK LOOK

Sizes	42", 47"
Heating Capacity	1,500 – 1,600 sq. ft.
Max BTUs	32,000
Thermal Efficiency	Up to 80%
Control System	Signature Command®
Safety Screen Barrier	Included
160 cfm Blower	Optional



Safety Screen Barrier (standard)

DESIGN OPTIONS

Interior Firebrick



Cottage Clay

Trim



Black trim available in curved style



Manchester shown with Cottage Clay firebrick



Winchester shown with Vintage Brown herringbone firebrick

SIMPLE CHIC, EXPANSIVE VIEW

The clean face design of this fireplace provides contemporary styling with an air of understated elegance. Featuring a wide viewing area and a robust, premium log set, the Winchester is a stunning addition to your home.

WINCHESTER QUICK LOOK

Sizes	42"
Heating Capacity	1,500 – 1,660 sq. ft.
Max BTUs	34,000
Thermal Efficiency	Up to 80%
Control System	Signature Command®
Safety Screen Barrier	Included
160 cfm Blower	Optional



Safety Screen Barrier

DESIGN OPTIONS

Interior Firebrick



Cottage Clay



Vintage Brown
Herringbone

GET THE REAL DEAL

Enjoy the most realistic gas fire available, thanks to the exclusive LexFire Burn System®. Featuring varying flame height and glowing logs, it mimics the natural progression of a wood burning fire for a truly authentic presentation. Plus, the Lexington Series offers unique finishing options to complete your look.

LEXINGTON QUICK LOOK

Sizes	32", 36"
Heating Capacity	1,520 – 1,950 sq. ft.
Max BTUs	44,000
Thermal Efficiency	Up to 80%
Control System	Standard Millivolt Control
Safety Screen Barrier	Included
160 cfm Blower	Standard



Lexington shown with Lexington arched front in Textured Black



Lexington shown with Lexington arched front in Vintage Iron

DESIGN OPTIONS

LEXINGTON ARCHED FRONTS (Also available in Black)

Textured Black with Doors in Vintage Iron



Vintage Iron with Doors in Vintage Iron



ADDITIONAL FEATURES

- Heat Activated Blower Standard
- Remote Ready
- Variable Flame Control
- Ceramic Glass with Quick Release Latch
- Deluxe Control Panel
- Built-in Adjustable Flue Restrictor
- High Altitude Kit optional
- Safety Screen Barrier



Safety Screen Barrier (standard)

EXCLUSIVE LEXFIRE BURN SYSTEM®

So realistic, you'll forget it's not real wood.

Featuring:

- Glowing, hand-carved logs
- Bright yellow flames
- Realistic ember bed
- Unparalleled flame pattern and realism (the hallmark of the LexFire Burn System®)
- Precise combustion and airflow

Visit monessenhearth.com to learn more about the LexFire Burn System®

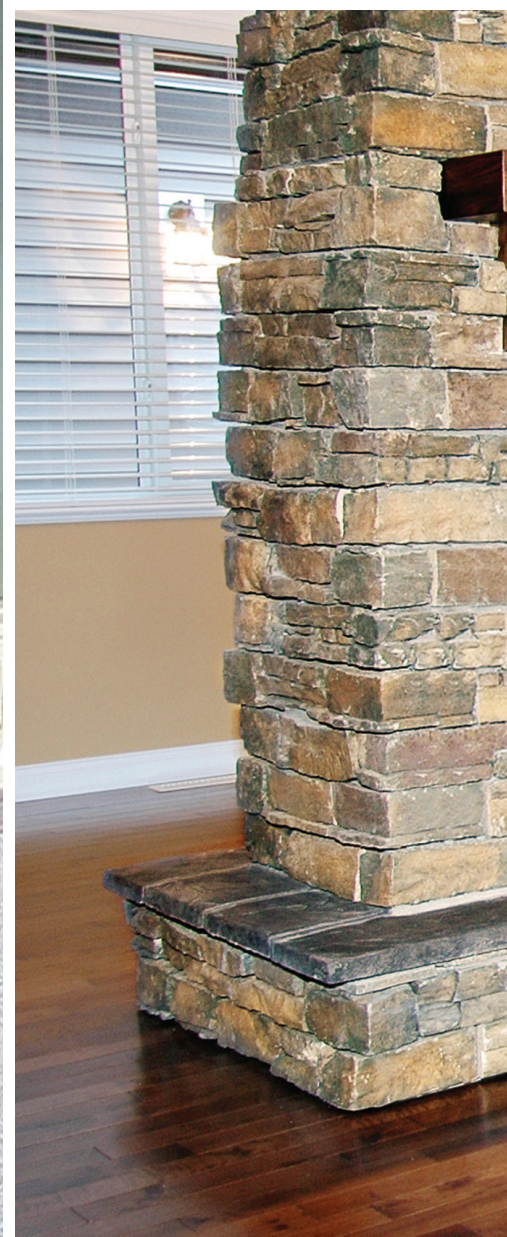
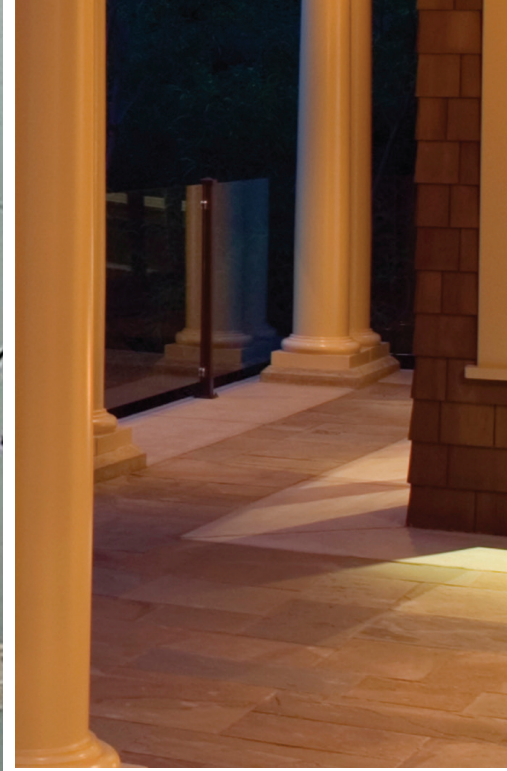
THE CLEAR CHOICE FOR BIG STYLE

The clean face design and wide open flame presentation of this taller fireplace fills the impressive firebox for a truly stunning view. Non-reflective ClearView ceramic glass ensures that no one has to strain to see the fire's glow from any angle, while the included accent light complements the beautiful design. In addition, rear burner shut off reduces BTUs, so you can enjoy the look of a great fire on milder evenings, without as much heat.

QUICK LOOK	COVINGTON	COVINGTON SEE-THRU
Sizes	44", 48", 60"	48"
Heating Capacity	1,800 – 3,100 sq. ft.	2,700 – 2,780 sq. ft.
Max BTUs	60,000	56,000
Thermal Efficiency	Up to 85%	Up to 80%
Control System	Total Signature Command®	Total Signature Command®
Safety Screen Barrier	Included	Included
160 cfm Blower	Optional	Optional



Covington shown with Vintage Brown herringbone firebrick





Covington see-thru shown with Stainless Steel outdoor facing kit and cast andirons



Covington see-thru shown with Vintage Brown herringbone firebrick and cast andirons

DOUBLE TAKE

This specialty option gives you a double dose of the beautiful, clean-face design of our Covington fireplace. Viewable from two rooms at once, the two non-reflective ceramic glass sides provide a "pass through" effect, while the ability to install on an exterior wall allows you to add dramatic effect to both indoor and outdoor settings. For ambiance without as much heat, use the center burner shut off to reduce BTUs.

SPECIALTY MODEL



Safety Screen Barrier (standard)

DESIGN OPTIONS FOR COVINGTON AND COVINGTON SEE-THRU

Interior Firebrick



Cottage Clay



Vintage Brown Herringbone

Finishing



Cast Andirons 16"
KHLDV600 Models Only

COVINGTON SEE-THRU

LOVELY, ANY WAY YOU LOOK AT IT

With three different configuration options, the Arlington Designer Series adds a dramatic accent to any room. Each style allows you to view the fire from multiple sides, while interior options like contemporary fireglass and stone kits and light kits transform your fireplace into a statement piece, even when it isn't burning.

SPECIALTY MODEL

ARLINGTON QUICK LOOK

Styles	See-Thru, Corner, Peninsula
Heating Capacity	1,450 -1,780 sq. ft.
Max BTUs	37,000
Thermal Efficiency	Up to 80%
Control System	Signature Command®
Safety Screen Barrier	Included
160 cfm Blower	Optional

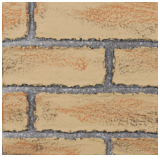


Safety Screen Barriers

Corner and See-Thru models come with two screens. Peninsula comes standard with three.

DESIGN OPTIONS

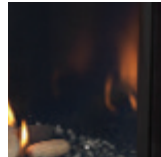
Interior Firebrick



Cottage Clay

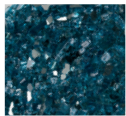


Vintage Brown Herringbone

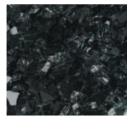


Black Porcelain

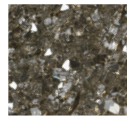
Fireglass



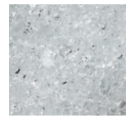
Sapphire



Onyx



Bronze



Diamond



Stone and Fireglass Kit



Contemporary stone with Bronze fireglass kit
 Note: Fireglass kits include one 2.25 lb. bag.
 Arlington Designer units require 2 bags.



Arlington see-thru shown with log set, Cottage Red firebrick and accent light



Arlington corner shown with Black porcelain panels and contemporary stone and fireglass kit



Arlington peninsula shown with log set, Cottage Red firebrick, and accent light

(Cabinet not available.)

SERENADE

LUXURY YOU'LL LOVE

Offering the very latest in contemporary styling, the Serenade is truly a luxury fireplace, featuring a linear format and beautiful ribbon flame. Accented with unique finishing options like our gorgeous Stainless Steel surround, this fireplace is truly a work of art. And with our glass illumination light system, the Serenade continues to entertain, even when it isn't lit.



Serenade shown with Textured Black surround and contemporary stone kit. (Surround also available in Iron Age.)

SERENADE SEE-THRU

DESIGNER'S DREAM

Combining the Serenade fireplace's contemporary, wide-open style with the dynamic look of a see-thru fireplace, this is the ultimate in designer fireplaces. Plus, it can be installed between two interior rooms or on an exterior wall, making it the only linear fireplace on the market to offer this versatile installation feature.

||| SPECIALTY MODEL





Serenade shown with contemporary Stainless Steel surround and optional Aged Driftwood log set



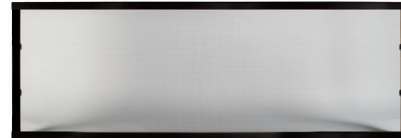
Serenade shown with Black trim kit.

QUICK LOOK

SERENADE

SERENADE SEE-THRU

Sizes	42", 60"	42"
Heating Capacity	1,400 – 2,000 sq. ft.	1,300 – 1,330 sq. ft.
Max BTUs	23,000 – 45,000	23,000 – 34,000
Thermal Efficiency	Up to 80%	Up to 80%
Control System	Total Signature Command®	Total Signature Command®
Safety Screen Barrier	Included	Included

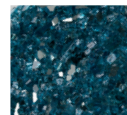


Safety Screen Barrier (Standard)

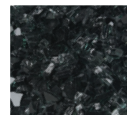
DESIGN OPTIONS FOR SERENADE AND SERENADE SEE-THRU

Finishing	42" WDV500	60" WDV600	See-Thru 42" WDVST500
Black Trim	Available	Available	Available
Stainless Face	Available	Available	Available
Textured Black Face	Available	Available	Available
Iron Age Face	Available	Available	—
Porcelain Panels	Optional	Standard	Standard
Stone and Fireglass Kit	Standard	Standard	Standard
Fireglass Kits (see colors below)	Available	Available	Available
Aged Driftwood Log Set	Optional	Optional	—
Quick Latch System	Yes, Ceramic Glass	Yes, Anti-Reflective Glass	Yes, Ceramic Glass
Outside Stainless Steel Trim	—	—	Available for installation on exterior wall

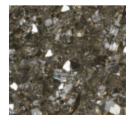
Fireglass



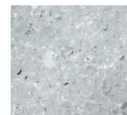
Sapphire



Onyx



Bronze



Diamond



Stone and Fireglass Kit



Aged Driftwood Log Set



Serenade see-thru shown with outdoor glass facing kit

Note: Fireglass kits include one 2.25 lb. bag. WDV500 and WDVST500 require two bags. WDV600 requires three bags.

MONESSEN DIRECT VENT SYSTEMS LINEUP

MODEL	MANCHESTER		WINCHESTER	LEXINGTON	
SIZES	42"	47"	42"	32"	36"
Model Number	500MDV	600MDV	ML500DV	LX32	LX36
Standout Feature	Wide viewing area and multiple finishing options		Clean face design and premium log set	Exclusive LexFire Burn System®	
Control System	Signature Command®		Signature Command®	Millivolt Control	
Max heating capacity (sq ft)	1,500	1,600	1,660	1,520	1,950
Viewing style	Front		Front, Clean Face	Front	
Maximum viewing area (sq in)	764	903	922	762	810
Max BTU/h*	30,000	32,000	34,000	36,000	44,000
Thermal efficiency	Up to 80%	Up to 80%	Up to 80%	Up to 80%	Up to 80%
Burner system	Natural Flame		Natural Flame	LexFire Burn System®	
AFUE Efficiency	Up to 64%	Up to 70%	Up to 67%	Up to 69%	Up to 72.5%
FE Ratings (Canada)	Up to 82%	Up to 74%	Up to 76%	66.1% NG 66.2% LP	66.8% NG 69.1% LP
Dimensions (Actual)	41" W 40 3/8" H 20 3/4" D	47" W 40 3/8" H 20 3/4" D	41" W 50 3/4" H 22 1/4" D	39" W 46 1/2" H 21 3/4" D	43" W 46 1/2" H 21 3/4" D
Dimensions (Framing)	42" W 46 1/2" H 20 3/8" D	48 1/8" W 46 1/2" H 20 3/8" D	42 1/2" W 50 7/8" H 22 1/4" D	41 11/16" W 47 3/8" H 21 3/4" D	45 11/16" W 47 3/8" H 21 3/4" D

ACCESSORIES

Remotes	Optional	Optional	Thermostat Controls Optional
Blower Kits	Optional	Optional	Standard
Field Fuel Conversion Kit	Available	Available	Available

Orange indicates upgrade from previous model.

Remotes and thermostats are available for all models for added convenience.

*For natural gas models.

All Monessen direct vent fireplaces in this catalog are CSA design certified and available in both natural gas and LP configurations.



Touch screen hand held ON/OFF remote. A Touch Screen remote comes standard with Total Signature Command® models.



Thermostat ON/OFF remote control with 3-step flame height adjustment and 3-step blower control with receiver

COVINGTON			COVINGTON SEE-THRU	ARLINGTON	SERENADE		SERENADE SEE-THRU
44"	48"	60"	48"	36" SPECIALTY	42"	60"	42"
KHLDV400	KHLDV500	KHLDV600	KSTDV500	STLDV, PFLDV, CLLDV, CRLDV	WDV500	WDV600	WDVST500
Non-reflective, ClearView ceramic glass			Specialty design lets you view the fire from two rooms at once	3 different configurations for versatile style and installation options	Ultra-contemporary wide view design and the latest technology		The first linear fireplace on the market that can be installed on an exterior wall for an indoor-outdoor view
Total Signature Command®			Total Signature Command®	Signature Command®	Total Signature Command®		Total Signature Command®
2,100	2,500	3,100	2,780	1,780	1,430	2,000	1,330
Front, Clean Face			See-Thru	See-Thru, Corner, Peninsula	Front, Clean Face		See-Thru
960	1,080	1,500	2,160	2,60	497	648	990
40,000	50,000	60,000	56,000	37,000	34,000	45,000	34,000
Up to 80%	Up to 80%	Up to 85%	Up to 80%	Up to 80%	Up to 80%	Up to 80%	Up to 80%
—	—	—	—	—	—	—	—
Up to 70%	Up to 70%	66% NG 66% LP	67.4% NG 66.3% LP	67.01% NG 68.28% LP	N/A	65.9% NG 66.1% LP	Up to 80%
Up to 82%	Up to 78%	81.0% NG 80.0% LP	77.3% NG 74.3% LP	69.7% NG 79.4% LP	64.4% NG 67.7% LP	70.2% NG 72.2% LP	61.0% NG 59.7% LP
44 1 ⁵ / ₁₆ " W 44 3 ⁷ / ₈ " H 23 7 ⁷ / ₈ " D	48 1 ⁵ / ₁₆ " W 44 3 ⁷ / ₈ " H 23 7 ⁷ / ₈ " D	55" W 50 1 ⁵ / ₁₆ " H 24 1 ¹ / ₄ " D	49 1 ¹ / ₂ " W 44 1 ¹ / ₂ " H 24" D	See Thru: 49 9 ¹⁵ / ₁₆ " W x 47 7 ⁷ / ₈ " H x 24" D Corner: 46 3 ⁷ / ₈ " W x 47 7 ⁷ / ₈ " H x 24" D Peninsula: 46 3 ⁷ / ₈ " W x 47 7 ⁷ / ₈ " H x 24" D	46 1 ⁷ / ₈ " W 35 7 ¹ / ₁₆ " H 18 3 ¹ / ₁₆ " D	57 1 ⁷ / ₈ " W 35 7 ¹ / ₁₆ " H 18 1 ⁵ / ₁₆ " D	51 1 ¹ / ₄ " W 38 3 ⁷ / ₈ " H 17 3 ⁷ / ₈ " D
45 5 ¹ / ₁₆ " W 44 3 ³ / ₄ " H 23 7 ⁷ / ₈ " D	49 5 ¹ / ₁₆ " W 44 3 ³ / ₄ " H 23 7 ⁷ / ₈ " D	55 1 ¹ / ₂ " W 50 9 ¹ / ₁₆ " H 24 1 ¹ / ₂ " D	50" W 44 3 ³ / ₄ " H 23" D	See Thru: 50 1 ¹ / ₁₆ " W x 48 3 ¹ / ₁₆ " H x 23" D Corner: 46 5 ⁷ / ₈ " W x 48 3 ¹ / ₁₆ " H x 27 7 ⁷ / ₈ " D Peninsula: 46 5 ⁷ / ₈ " W x 48 3 ¹ / ₁₆ " H x 23" D	46 5 ⁷ / ₈ " W 35 5 ⁷ / ₈ " H 17 7 ⁷ / ₈ " D	57 5 ⁷ / ₈ " W 35 5 ⁷ / ₈ " H 18 5 ⁷ / ₈ " D	51 3 ³ / ₄ " W 38 1 ¹ / ₂ " H 17 3 ⁷ / ₈ " D
Optional			Optional	Optional	Touchscreen remote included		Touchscreen remote included
Optional			Optional	Optional	Optional		Optional
Available			Available	Available	Available		Available

ULTIMATE CONVENIENCE AT YOUR FINGERTIPS

Our direct vent gas fireplaces offer two
Exclusive Signature Command® Systems.

Discover the level of control that's right for you!

Signature Command® System

An A/C adaptor is included; however, unlike competing control systems that require A/C to function, the Signature Command® System can be installed where no power is available, making it more convenient than ever to enjoy the fire.

Featuring:

- ON/OFF 3-step variable flame height adjustment
- Automatic, uninterrupted battery back-up during power outages
- Pilot selection option — choice of cold climate standing pilot or the energy efficient intermittent pilot
- Memory shut off remembers your favorite setting the next time the fireplace is turned on
- Convenient diagnostic code indication lights
- Built-in remote receiver for the option to easily add a remote control

Total Signature Command® System

Enjoy the convenience of a technologically advanced and energy efficient fireplace control system!

Featuring:

All of the features included with Signature Command® System

PLUS:

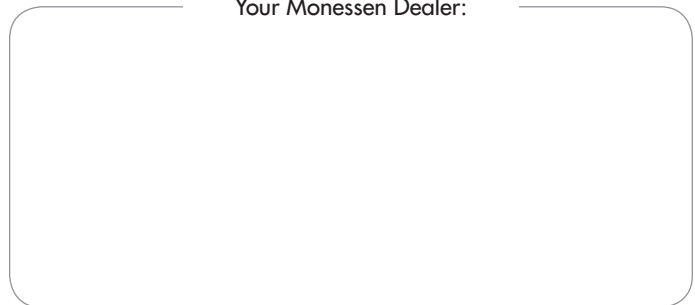
- Smart Mode® thermostat for enhanced energy efficiency — it automatically adjusts flame height and/or blower to maintain the desired temperature, using only the energy it needs to help save on fuel costs.
- TSFSC Full Function Touch Screen remote control
- Rear burner shut down feature lowers heat output as much as 70% for ambiance when heat is not needed (on select fireplaces)
- A/C accessory model for added control features, like household lighting, waterfall feature, and more!



LOVE AT FIRST LIGHT

A Brand of Vermont Castings Group
149 Cleveland Drive, Paris, Kentucky 40361
monessenhearth.com

Your Monessen Dealer:



Warning: Hot glass will cause burns. Do not touch glass until cooled. Never allow children to touch glass.



To avoid personal injury or property damage, the product described by this brochure must be installed, operated and maintained in strict compliance with the instructions packaged with the product and all applicable building or fire codes. Contact local building or fire officials about restrictions and installation inspection requirements. All photographs and drawings on this brochure are for illustrative purposes only and are not intended for, nor should they be used as a substitute for the instructions packaged with the unit. Appearance and specifications of the product are subject to change without notice.
©2015 Vermont Castings Group

For more information about VCG and Monessen efficient and environmentally friendly products, please visit monessenhearth.com

MON1211 Ver.03