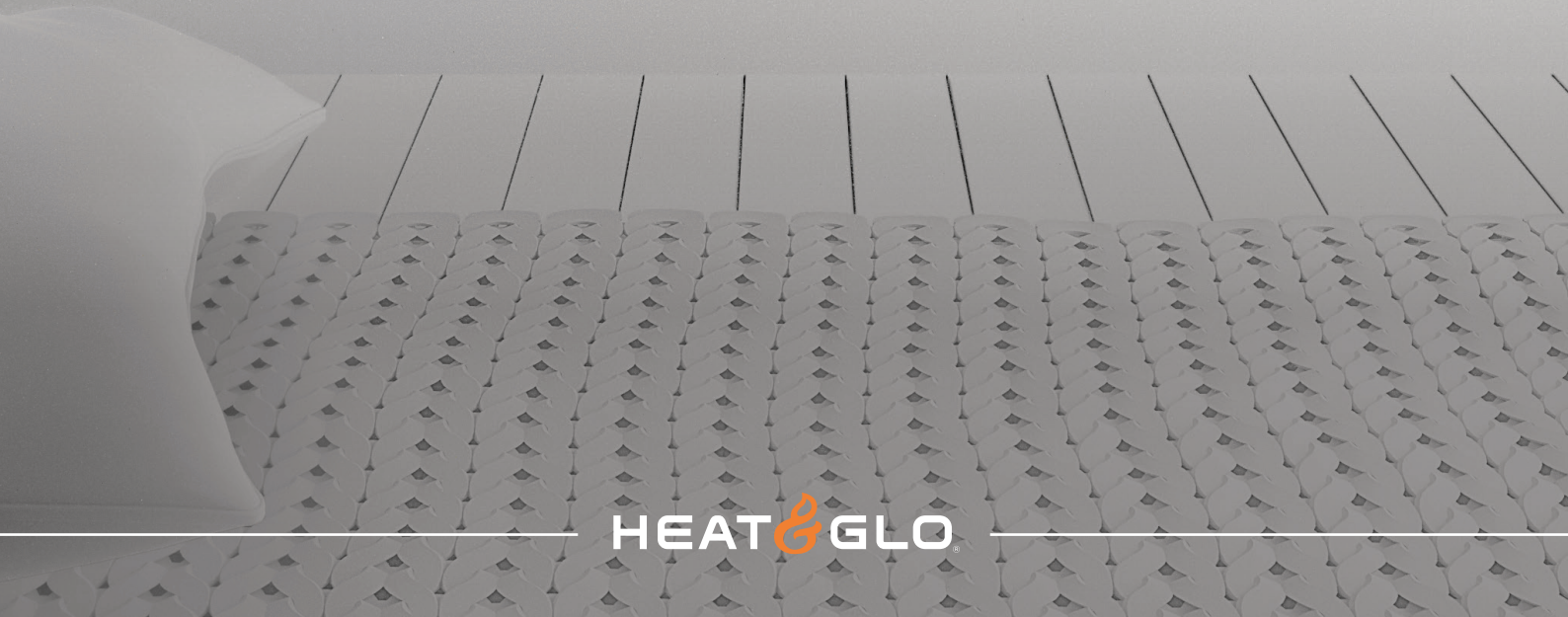
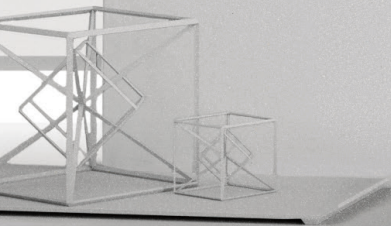




6000

BALANCED FLUE GAS FIREPLACE



HEAT & GLO



# 6000

The original achievement, made better over time. That's the history behind this flagship model from Heat & Glo. It started in the late 1980s as the DV88, gained popularity as the DV36 and then evolved into the award-winning 6000 it is today. Once you witness the vivid flames and efficient heat, you'll see why.

## FEATURES & OPTIONS

- RC300 remote control, front and fan included standard
- Optional stainless steel front available
- Optional flex heat distribution system



RC300  
REMOTE CONTROL



STANDARD  
FRONT



OPTIONAL STAINLESS  
STEEL FRONT



OPTIONAL  
FLEX HEAT REGISTER



### INTELLIFIRE™ IGNITION SYSTEM



The IntelliFire™ Ignition System (IPI) is an advanced intermittent pilot ignition system. IPI constantly monitors ignition, ensures safe functioning and conserves up to \$10/month in energy costs.

### BALANCED FLUE TECHNOLOGY



Balance Flue fireplaces remove 100% of combustion exhaust and odors outside of the home. These sealed fireplaces provide optimal heat, conserve energy and ensure clean, safe indoor air quality.

### FLEX HEAT TECHNOLOGY

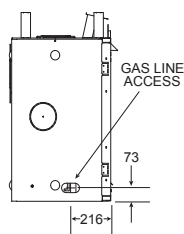


Draw heat from the 6000 into another room of the home, up to 6 meters away. When flex heat is run continuously, it will redirect up to 25% of the fireplace's heat to another area, thus reducing wall temperatures above the fireplace. Two flex heat registers run continuously will redirect up to 50% of the fireplace's heat.

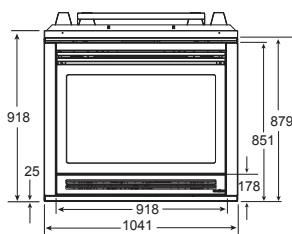
## 6000 SPECIFICATIONS

MODEL	FRONT WIDTH		BACK WIDTH		HEIGHT		DEPTH		GLASS SIZE	mJh INPUT	EFFICIENCY	FUEL TYPE/ IGNITION SYSTEM
	UNIT	FRAMING	UNIT	FRAMING	UNIT	FRAMING	UNIT	FRAMING				
6000	1041	1070	724	1070	1019	1022	546	560	800 x 475	N - 36 P - 34 B - 29.5	79%	Gas, IntelliFire Plus

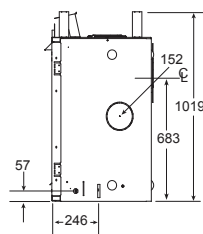
LEFT SIDE VIEW



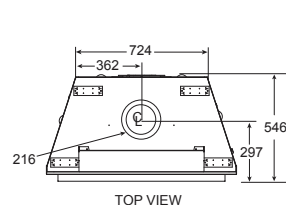
FRONT VIEW



RIGHT SIDE VIEW



TOP VIEW



Dimensions above are in millimeters. Reference dimensions only. We recommend measuring individual units at installation. NOTE: Combustible material should not be installed over the face. Make sure you do NOT cover the decorative door opening.

Refer to installation manual for detailed specifications on installing this product. Heat & Glo reserves the right to update units periodically. The flame and ember appearance may vary based on the type of fuel burned and the venting configuration used. Pictures in this brochure are not a true representation of the fireplace and/or flames.

For complete information on this model, please contact us at:



No one builds a better fire

[www.heatnglo.com](http://www.heatnglo.com)